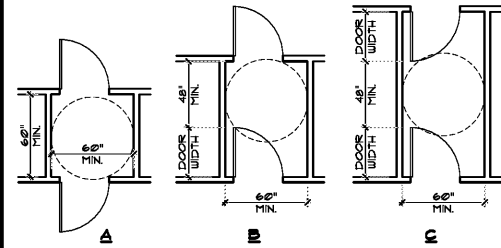
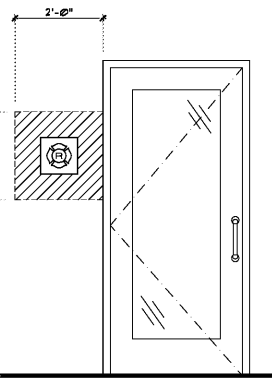
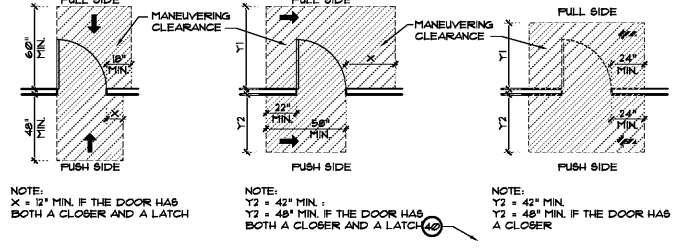


NOTE: DECAL OR SIGN MUST BE WITHIN 24" OF THE MAIN DOOR NOT HIGHER THAN 6'-0" AND NOT LOWER THAN 4'-0"

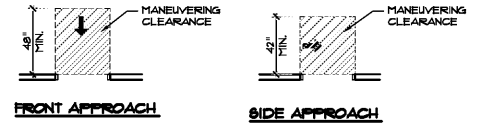
* IN ACCORDANCE WITH SECTION 63322 FS



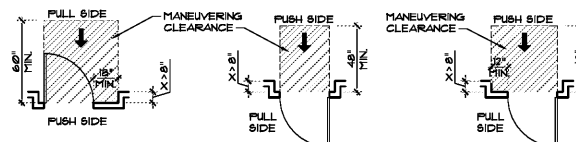
DOORS IN A SERIES



FRONT APPROACH HINGE SIDE APPROACH LATCH SIDE APPROACH



CLEARANCES WITHOUT DOORS



CLEARANCES AT RECESSED DOORS

WALL LEGEND

- DOOR SYSTEM - REFER TO DOOR SCHEDULE
- WINDOW SYSTEM - REFER TO WINDOW SCHEDULE
- METAL STUD PARTITION - REFER TO TYPICAL NON-RATED WALL PARTITION DETAIL D/A/B
- METAL STUD SOUND INSULATED PARTITION - REFER TO TYPICAL NON-RATED WALL PARTITION DETAIL E/A/B
- METAL STUD LOW WALL PARTITION - REFER TO TYPICAL LOW WALL PARTITION DETAIL F/A/B
- 2x6 WOOD STUD EXTERIOR SYSTEM WITH INSULATION - SEE WALL SECTIONS

KEYED NOTES

1. CONCRETE FILLED BOLLARD - SEE CIVIL DRAWINGS
2. SINK - REFER TO PLUMBING DRAWINGS
3. INTERIOR OF DRAIN LEADER IN WALL, MANIFOLD AND CONNECT TO UNDERGROUND STORM SYSTEM, SEE CIVIL DRAWINGS AND PLUMBING DRAWINGS
4. 2x6 WOOD STUD WALL AT 16" O.C.
5. REFER TO DECOR DRAWINGS FOR ELEVATIONS OF PARTIAL HEIGHT WALLS. INSTALL UN-STRUT AT EACH END AND 4'-0" O.C. MAX. REFER TO DETAIL E/A/B
6. INSTALL MAXIMUM OCCUPANCY SIGNAGE (WHERE REQUIRED). SIGNAGE SHALL BE INSTALLED AT 60" AFF. THE G.C. IS TO VERIFY THE SIZE, QUANTITY AND LOCATION(S) OF SIGNAGE WITH LOCAL FIRE MARSHAL PRIOR TO INSTALLATION. (G.C. TO CONFIRM WITH OWNER THAT THIS ITEM IS TO BE PROVIDED BY OWNER)
7. FURR OUT WALL AT ELECTRIC PANELS. REFER TO ELECTRICAL DRAWINGS.
8. LINE OF FIRE-FINISHED / PRE-FABRICATED CANOPY ACCENT BAND ABOVE, PROVIDED AND INSTALLED BY G.C.
9. STAINLESS STEEL CLOSURE PIECE PROVIDED BY COOLER MANUFACTURER INSTALLED BY G.C. CAULK TO ADJACENT SURFACE
10. INSTALL OWNER FURNISHED DRIVE-THRU WINDOW, REFER TO EQUIPMENT PLAN AND WINDOW SCHEDULE.
11. ROOF ACCESS LADDER - SEE DETAIL 4/A/B/1
12. INSTALL OWNER FURNISHED "CUSTOMER BELL" AT 54" AFF.
13. COORDINATE THE LOCATION OF THE SECURING BOLTS FOR THE SAFE WITH THE MANUFACTURER'S REQUIREMENTS.
14. GAS METER - SEE PLUMBING DRAWINGS
15. LINE OF SOFFIT ABOVE, REFER TO CEILING PLAN.
16. QUEUE LINE RAIL, REFER TO DECOR DRAWINGS FOR EXACT DIMENSIONS. VERIFY EXACT DIMENSIONS FOR CORE DRILLING WITH DECOR DRAWINGS PRIOR TO INSTALLATION.
17. SELF SERVE DRINK STATION AND CONDIMENT BAR TOP OF COUNTER TO BE SET AT 34" AFF. MAX. REFER TO ELECTRICAL AND PLUMBING DRAWINGS.
18. PRODUCTION COUNTER, REFER TO ELECTRICAL DRAWINGS.
19. HOOD ABOVE, REFER TO MECHANICAL DRAWINGS.
20. CANOPY POST, BY OWNER TYP. OF (3). CENTER ON F.O. FRAMING OF EXTERIOR WALL.
21. DO NOT INSTALL BRICK BEHIND COOLER, PROVIDE 1" RIGID INSUL ON WALL BEHIND COOLER. HOLD COOLER OFF INSULATION 1"
22. PROVIDE STAINLESS STEEL SHEET OVER 1/2" CEMENT BOARD ON METAL STUD FRAMING BEHIND HOOD. EXTEND MIN. 18" BEYOND EDGE OF HOOD IN BOTH DIRECTIONS, FROM SLAB TO T.O. WALL.
23. ELECTRICAL SERVICE / METER - SEE ELECTRICAL DRAWINGS
24. INSTALL TELEVISION AND MOUNTING BRACKET. PROVIDE IN-WALL BLOCKING.
25. ALIGN FACE OF INTERIOR WALL WITH FACE OF EXTERIOR WALL.
26. CROSSWALK - SEE CIVIL DRAWINGS
27. PROVIDE LIGHT FRAME CONSTRUCTION SIGN 8"X8" "R" MALTESE CROSS SIGN IN ACCORDANCE WITH SECTION 63322 FS. SIGN SHALL BE AFFIXED 24" FROM RIGHT SIDE OF ENTRANCE AND SHALL BE MOUNTED 4-6 FEET FROM GROUND - SEE DETAIL B/A/A
28. NEW 2x6 WOOD STUD 16" O.C. EXTERIOR WALL SYSTEM WITH 1/2" CDX PLYWOOD SHEATHING COVERED WITH "TYVEK" BUILDING WRAP WITH EP8 FINISH SYSTEM AND VENEER - SEE EXTERIOR ELEVATIONS AND WALL SECTIONS
29. ASPHALT DRIVE - SEE CIVIL DRAWINGS
30. DRIVE-THRU MENU BOARD AND SPEAKER SYSTEM - SEE DETAIL A/A/B/1
31. CONCRETE DRIVE - SEE CIVIL DRAWINGS
32. BIKE RACK - SEE CIVIL DRAWINGS
33. CONCRETE SIDEWALK - SEE CIVIL DRAWINGS
34. LANDSCAPE AREA - SEE LANDSCAPE DRAWINGS
35. CONCRETE CURB - SEE CIVIL DRAWINGS
36. HOLLOW METAL DOOR / DOOR FRAME SYSTEM - SEE DOOR SCHEDULE
37. WALK-IN COOLER / FREEZER BY OWNER
38. H.C. RAMP - SEE CIVIL DRAWINGS
39. OUTLINE OF DRIVE-THRU CANOPY ABOVE - SEE WALL SECTIONS
40. NEW STOREFRONT DOOR / WINDOW SYSTEM - SEE DOOR / WINDOW SCHEDULE
41. NEW SEATING PACKAGE - SEE DECOR DRAWINGS
42. NEW POST INTERNATIONAL ACCESSIBILITY SIGN INDICATING ACCESSIBLE ENTRANCE
43. ADA ACCESSIBLE SEATING
44. WALL MOUNTED HAND SINK - SEE PLUMBING DRAWINGS.
45. THREE COMPARTMENT SINK - SEE PLUMBING DRAWINGS.

OWNER FURNISHED ITEMS

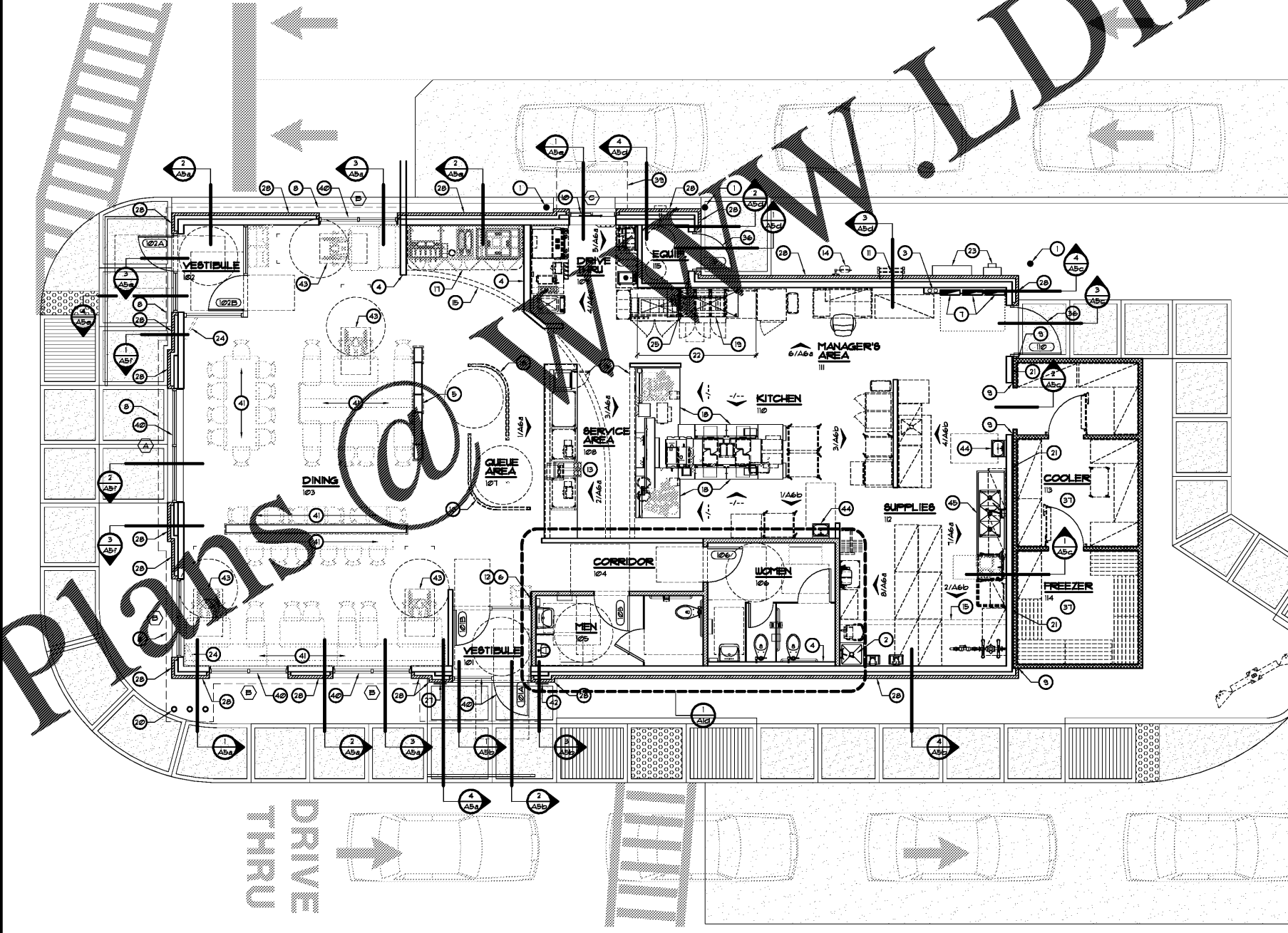
THE FOLLOWING ITEMS MAY OR MAY NOT BE SUPPLIED BY THE OWNER/FRANCHISEE. G.C. IS TO CONFIRM WITH OWNER THAT THESE ITEMS ARE BEING SUPPLIED AND/OR INSTALLED BY OWNER. PLEASE CONTACT OWNER IF YOU HAVE ANY QUESTIONS ABOUT THIS LIST. ON SHEET N1 IN THE ARCHITECTURAL SPECIFICATIONS THERE IS ALSO A LIST THAT OUTLINES SEVERAL OWNER SUPPLIED ITEMS THAT ARE INCLUDED IN THIS LIST, THE SAME INSTRUCTIONS APPLY TO THAT LIST.

- | | |
|---------------------------------|---------------------------|
| A. DRIVE-THRU WINDOW | L. INTERIOR MENU BOARD |
| B. DRIVE-THRU MUSIC SYSTEM | M. EXTERIOR MENU BOARD |
| C. HVAC UNITS | N. MENU BOARD CANOPY |
| D. KITCHEN EQUIPMENT | O. CANOPIES/ACCENT BAND |
| E. SMALLWARES | P. DECOR PACKAGE |
| F. ATB CASH MACHINE | q. DECOR LIGHTING |
| G. REGISTERS | r. SEATING |
| H. HOOD SYSTEM | s. WALL COVERINGS |
| I. BULK CO2 | t. FLOORING |
| J. DRINK SYSTEM | Q. MAX. OCCUPANCY SIGNAGE |
| K. DRINK EQUIPMENT INSTALLATION | R. CUSTOMER BELL |
| | S. STORE SIGNAGE |
| | T. LOT LIGHTING |
| | U. FIRE EXTINGUISHERS |

GENERAL NOTES

1. REFER TO ARCHITECTURAL AND CIVIL SITE PLANS FOR ADDITIONAL SITE INFORMATION.
2. SEE SHEET EQ1 AND EQ2 FOR EQUIPMENT PLAN AND SCHEDULE.
3. SEE DETAIL A/A/A FOR TYPICAL MANEUVERING CLEARANCE REQUIREMENTS.
4. ALL INTERIOR WALLS ARE NOMINAL 4" WOOD STUDS.
5. ALL NEW G.W.B. TO RECEIVE FINISH LEVEL 4.
6. GENERAL CONTRACTOR TO PROVIDE WOOD BLOCKING IN WALLS AS REQUIRED FOR NEW MILLWORK, ACCESSORIES, ETC.
7. FOR DIMENSIONAL PURPOSES, WOOD STUD WALLS ARE DRAWN AT 4" OR 6" U.N.C.

TYPICAL MANEUVERING CLEARANCES AT DOORWAYS



FLOOR PLAN SCALE: 3/16" = 1'-0"

Order Plans @

REVISIONS	BY

OLIVERI ARCHITECTS
 AA 0002921
 Member of the American Institute of Architects
 32707 US Hwy. 19, Suite 100, Palm Harbor, FL 34684
 Phone: 727.942.1000 Fax: 727.942.1002
 www.oliveriarchitects.com

NOT FOR CONSTRUCTION

Case No. 18-0000002
 New Building for
ARBY'S
 Store #8149
 1058 Dunlawton Ave.
 Port Orange, Florida

Date: 08.14.18
 Project Mgr: DM
 Drawn: JDS
 Job: 18-082
 Sheet
A1a