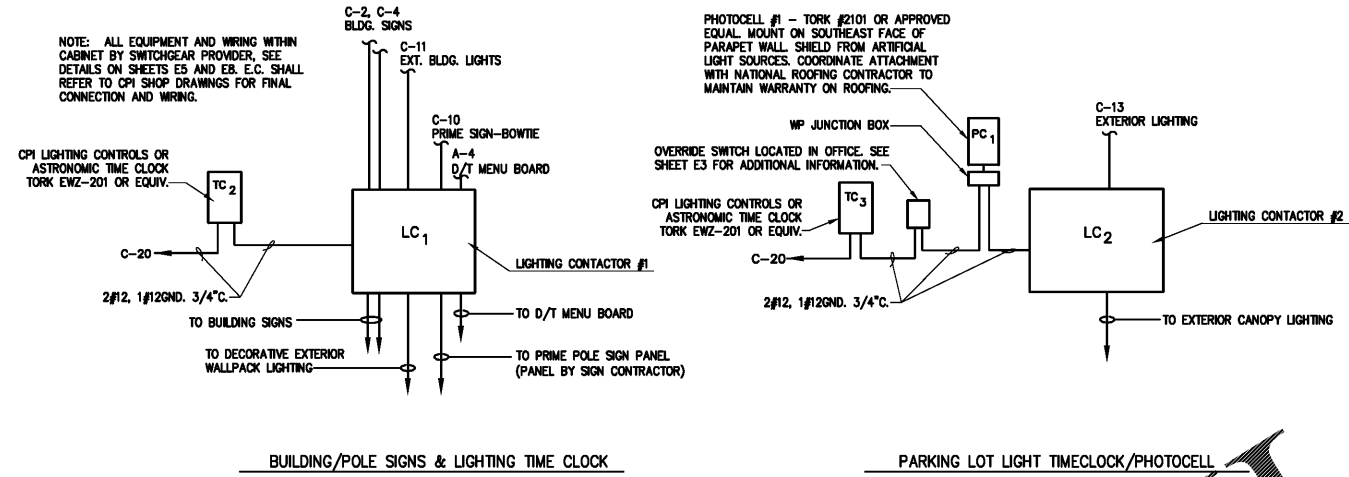
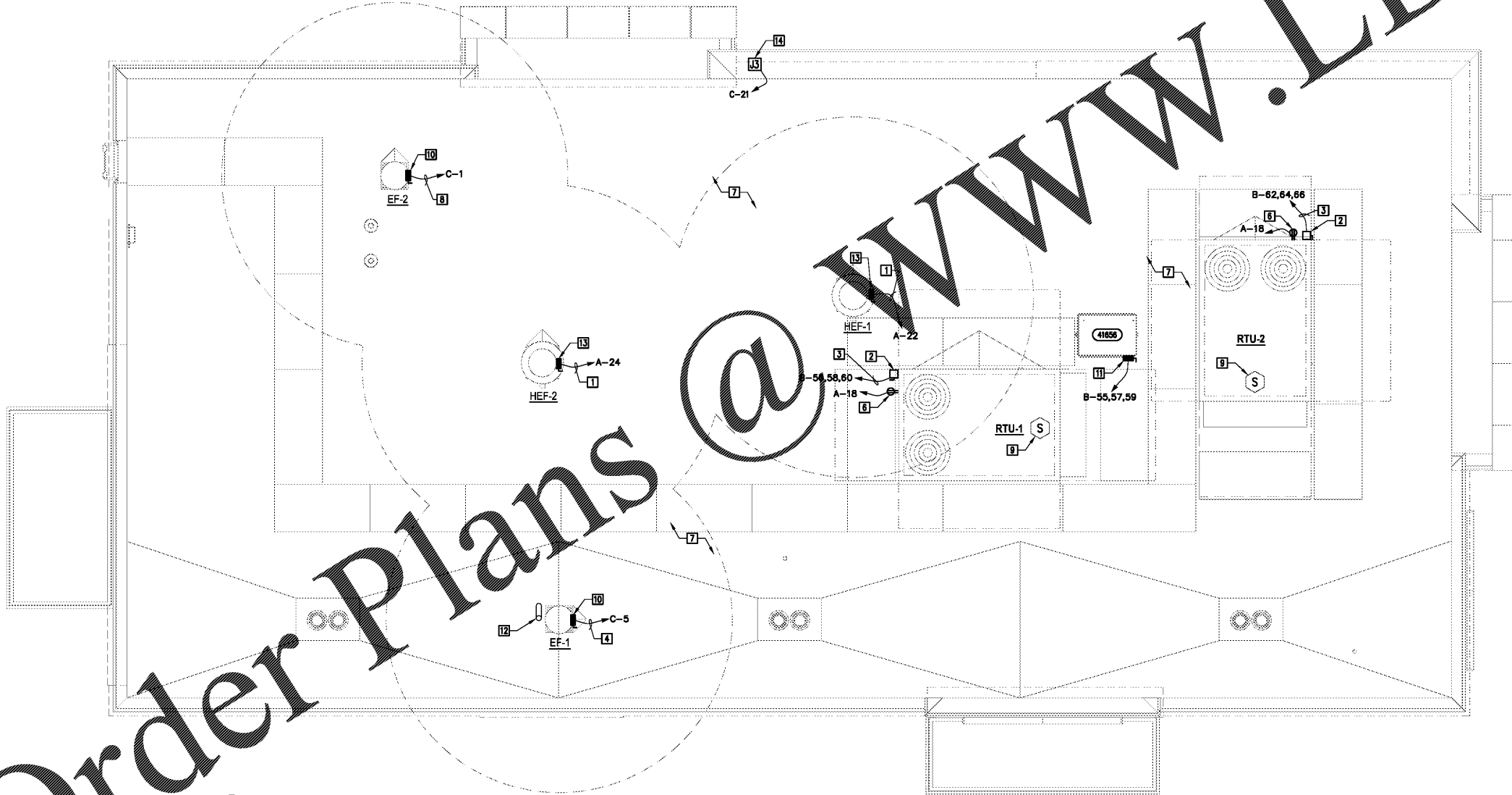


3 SIGNAGE WALL SECTION
E5 N.T.S.



2 LIGHTING CONTACTOR DETAILS
E5 N.T.S.



1 ELECTRICAL ROOF PLAN
E5 SCALE: 1/4" = 1'-0"

GENERAL POWER ROOF NOTES

- DISCONNECTS AT ALL MECHANICAL EQUIPMENT FURNISHED WITH EQUIPMENT.
- ELECTRICAL CONTRACTOR IS RESPONSIBLE FOR ALL ELECTRICAL WORK SHOWN ON THE MECHANICAL DRAWINGS. (EXCEPT LOW VOLTAGE).
- ROUTE ALL CONDUITS CONCEALED (INSIDE WALLS AND/OR ABOVE CEILING) WHERE POSSIBLE.
- SEE MECHANICAL & PLUMBING ROOF PLANS FOR ADDITIONAL ROOF INFORMATION.
- ALL ELECTRICAL CONDUITS PENETRATING THE ROOF SHALL GO THROUGH ROOF CONDUIT CURB INSTALLED BY GENERAL CONTRACTOR & ROOFING CONTRACTOR; E.C. SHALL COORDINATE. INSTALL PER ROOFING MANUFACTURER'S RECOMMENDATIONS AND DETAILS.
- ALL CONDUITS FOR ROOF TOP EQUIPMENT SHALL BE RUN BELOW ROOF DECK TO ELIMINATE TRIPPING HAZARDS AND AVOID SEPARATING CONDUCTORS FOR SOLAR HEATING. NEC 310.15(B)(5)(c).

POWER ROOF PLAN NOTES

- CIRCUIT SHALL BE ROUTED THROUGH THE PRE-WIRE SECTION OF THE HOOD CONTROL PANEL. SEE MECHANICAL "M" SHEETS AND HOOD "H" SHEETS. COORDINATE W/ M.C.
- WP/WR NEMA 3R SAFETY DISCONNECT SWITCHES ARE FACTORY INSTALLED IN ALL RTU'S AND PROVIDED WITH FANS. E.C. SHALL ROUTE CIRCUITS TO DISCONNECT SWITCH VIA BOTTOM ENTRY OF CURB ON ROOF EQUIPMENT. COORDINATE W/ M.C. AND G.C.
- CIRCUIT SHALL BE CONTROLLED VIA THERMOSTATS. SEE MECHANICAL "M" SHEETS. COORDINATE W/ M.C.
- WASH ROOM EXHAUST FAN TO BE INTERLOCKED WITH BOTH LIGHT SWITCHES FOR PRODUCTION AREA 108 SO THAT FAN IS ALWAYS ON DURING HOURS OF OPERATION.
- E.C. SHALL PROVIDE AND INSTALL NEMA 3R JUNCTION BOX FOR EXTERIOR SIGNAGE AT 19'-2" A.F.F. PROVIDE CONDUIT FROM CENTER OF SIGNAGE TO JUNCTION BOX LOCATED BELOW ROOF DECK AND ABOVE CEILING FOR ACCESS. RUN SIGN CIRCUIT THROUGH TIMECLOCK. SEE DETAIL 2 THIS SHEET. COORDINATE W/ SIGNAGE PROVIDER.
- WR/GFI RECEPTACLE IS FACTORY INSTALLED. E.C. SHALL ROUTE ALL CIRCUITS TO RECEPTACLE VIA BOTTOM POWER ENTRY IN CURB.
- ALL ELECTRICAL CONDUITS PENETRATING ROOF SHALL GO THROUGH PITCH POCKETS INSTALLED BY G.C.; E.C. & G.C. SHALL COORDINATE. INSTALL PER ROOFING MANUFACTURER'S RECOMMENDATIONS AND DETAILS.
- RESTROOM EXHAUST FANS TO BE INTERLOCKED WITH LIGHT SWITCHES IN BOTH RESTROOMS SO THAT FAN IS ON WHEN EITHER RESTROOM IS OCCUPIED.
- SUPPLY 120 VOLT POWER TO DUCT SMOKE DETECTORS (FURNISHED BY MECHANICAL, INSTALLED AND WIRED BY ELECTRICAL). CONNECT WITH HVAC CONTROL SYSTEM SUCH THAT ACTIVATION OF SMOKE DETECTOR WILL SHUT DOWN SUPPLY FAN. VERIFY PROPER OPERATION.
- SAFETY DISCONNECT SWITCH, 120V/1P-20A, FUSIBLE, FUSE PER NAMEPLATE, NEMA-3R BY E.C.
- E.C. SHALL PROVIDE AND INSTALL WP/NEMA-3R SAFETY DISCONNECT SWITCH FOR REMOTE CONDENSING UNIT. E.C. SHALL VERIFY REQUIREMENTS. SEE SHEET E8 FOR ADDITIONAL INFORMATION.
- G.C. SHALL PROVIDE CONDUIT PENETRATION FOR SATELLITE OVER OFFICE BELOW. SEE DETAIL 2/A5.0.
- DISCONNECT SWITCH FURNISHED WITH FAN BY HOOD CONTRACTOR.
- J-BOX FOR TRANSFORMER (J3) POWERING LED STRIP LIGHTS (J) - REFER TO E3 FOR LENGTH. BOXES ARE SHOWN GRAPHICALLY. BOXES SHALL BE INSTALLED PER MANUFACTURER REQUIRED LENGTHS. COORDINATE MOUNTING LOCATION WITH OWNER AND G.C. VERIFY CONNECTION REQUIREMENTS (PISTALS/EXTENSIONS) WITH VENDOR PRIOR TO BID AND INSTALLATION. TRANSFORMERS ARE LIMITED TO 300 WATTS OR 80 FEET OF LED ROPE LIGHT. TRANSFORMERS TO BE INSTALLED ON THE INTERIOR, BELOW ROOF. POWERED BY CIRCUIT C-21 THROUGH TIME CLOCK AND LIGHTING CONTACTOR.

GEORGE SARFATTY, AIA
300 Davis Street, Suite 410, Fernandina, FL 32035
Tel: (904) 279-1100 Fax: (904) 279-1101
www.gsa.com Copyright © 2014

KENNETH L. KRAUS
P.E. # 74120
308 Oak Grove Drive
Wausonville, IL 60994
Tel: (847) 719-1708 Fax: (847) 719-1738
www.klkelectrical.com
Plumbing ♦ Mechanical ♦ Electrical

KRISPY KREME DOUGHNUTS
1730 E. NINE MILE ROAD
PENSACOLA, FL 32514



SEAL
LICENSE
74120
STATE OF
FLORIDA
ELECTRICAL
DATE: 06/23/18

PROJECT NO.: 18-004
CHECKED BY: KIK
DRAWN BY: STAFF
SHEET TITLE:
ELECTRICAL ROOF PLAN
SHEET NO.:

E5