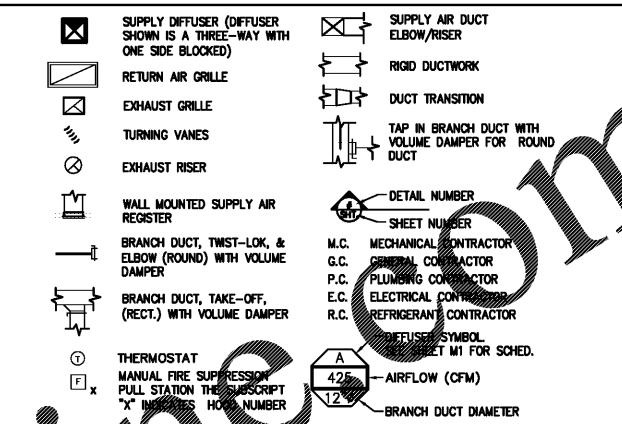


MECHANICAL LEGEND



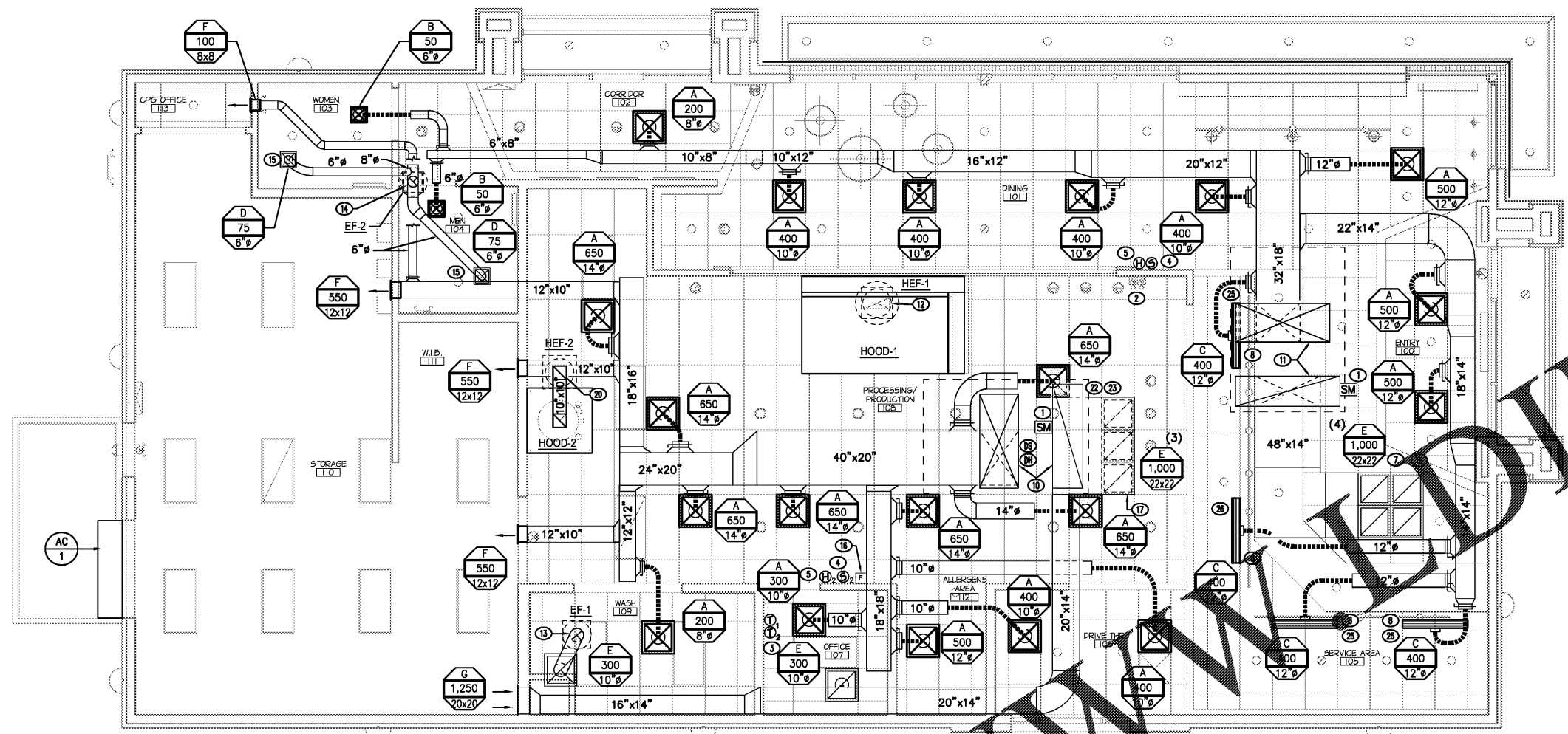
IF ANY DISCREPANCIES ARE FOUND ON THE PLANS, THE CONTRACTOR SHALL BID AND INSTALL THE MORE CONSERVATIVE SPECIFICATIONS AND CALL ENGINEER FOR CLARIFICATION.
UNLESS NOTED OTHERWISE, ALL ITEMS ARE TO BE PROVIDED & INSTALLED BY THE MECHANICAL CONTRACTOR.

GREASE EXHAUST DUCTWORK SPECIFICATION

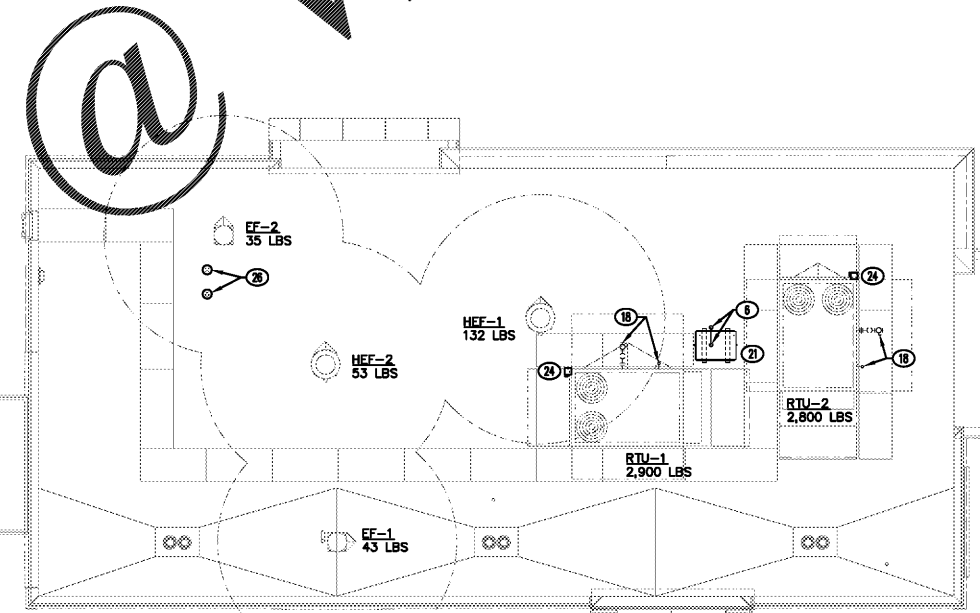
- A. THE GREASE EXHAUST SYSTEM SHALL BE CONSTRUCTED OF BLACK STEEL NOT LESS THAN 18 GA. UP TO 4 SQ. FT. AREA, 14 GA. ABOVE 4 SQ. FT. WITH CONTINUOUS GREASE-TIGHT AND WATER-TIGHT WELDS AT ALL JOINTS. THE SYSTEM SHALL BE SO CONSTRUCTED THAT NO GREASE WILL BECOME POCKETED IN ANY PORTION THEREOF & SHALL SLOPE AT NOT LESS THAN 1/4" PER FOOT OF HORIZONTAL LENGTH UNDER 75 FEET LONG OR 1" PER FOOT IF OVER 75 FEET, BACK TO THE HOOD OR AS REQUIRED BY THE LOCAL AUTHORITIES.
- B. OPENINGS IN DUCT SHALL CONFORM TO CODE REQUIREMENTS AND SHALL BE PROVIDED FOR COMPLETE AND THOROUGH CLEANING OF DUCT SYSTEM.
- C. GREASE EXHAUST DUCT SHALL BE WRAPPED WITH TWO LAYERS OF 1-1/2" 3M FIRE BARRIER DUCT WRAP 615+ (ASTM E 2336) OR EQUIVALENT GREASE DUCT WRAP. INSTALL WRAP PER MANUFACTURER'S INSTRUCTIONS.
- D. PROVIDE THE "PENETRATOR" GREASE DUCT CLEAN-OUT ACCESS DOORS MANUFACTURED BY FLAME GARD, INC. (OR EQUIVALENT) AT EVERY CHANGE OF DIRECTION IN THE DUCT, AT EACH FLOOR, AND/OR EVERY 10 FEET WITH MINIMUM OF 3 FEET OF CLEARANCE IN FRONT OF CLEAN-OUT.

CONSTRUCTION NOTES

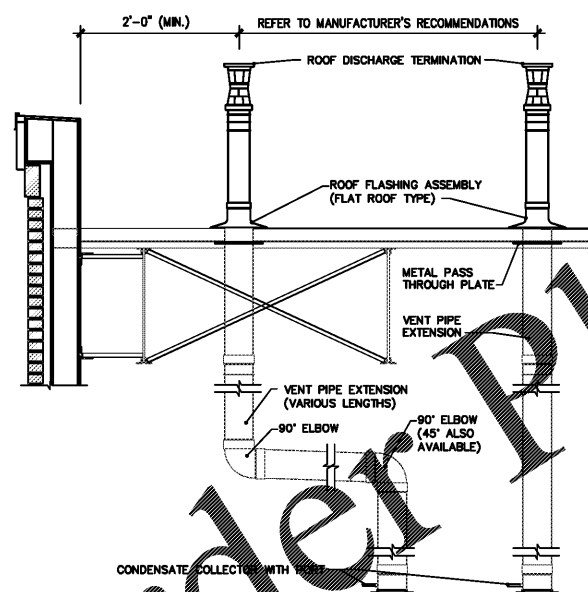
1. SMOKE DETECTOR IN RETURN AIR DUCT OF RTU. M.C. SHALL INTERLOCK SMOKE DETECTOR TO SHUTDOWN RTU-1 & RTU-2 UPON DETECTION OF SMOKE. ACCESS SHALL BE PROVIDED FOR INSPECTION AND MAINTENANCE. M.C. SHALL VERIFY CODE REQUIREMENTS FOR SMOKE DETECTORS IN THE APPLICABLE CONFIGURATION.
2. PROVIDE KEYS AUDIBLE/VISUAL ALARM DEVICES IN APPROVED LOCATION TO SIGNAL DUCT DETECTOR ACTIVATION. MOUNT AT 6'-6" AFF. M.C. & E.C. SHALL TEST AND VERIFY THE SMOKE DETECTION SYSTEM WORKS PROPERLY AND MEETS ALL LOCAL AND STATE CODE REQUIREMENTS.
3. M.C. SHALL LOCATE THERMOSTATS AT 48" AFF ON WALL IN MANAGERS OFFICE. LABEL EACH THERMOSTAT FOR EASY IDENTIFICATION. M.C. SHALL PROVIDE ALL REQUIRED CONTROL WIRING, J-BOX, AND TERMINATIONS.
4. M.C. TO MOUNT REMOTE TEMPERATURE SENSOR AT 60" AFF. M.C. SHALL PROVIDE ALL REQUIRED CONTROL WIRING, J-BOX, AND TERMINATIONS.
5. M.C. TO MOUNT REMOTE HUMIDISTAT AT 60" AFF. M.C. SHALL PROVIDE ALL REQUIRED CONTROL WIRING, J-BOX, AND TERMINATIONS.
6. M.C. SHALL ROUTE REFRIGERANT LINES THROUGH 4" RD ROOF PENETRATION PER DETAIL 1/M4. COORDINATE PENETRATION WITH G.C. M.C. SHALL ROUTE REFRIGERANT LINES IN CEILING SPACE AND DROP DOWN TO COOLING TUNNEL PER DETAIL 2/M4 AND CONNECT TO COOLING TUNNEL PER DETAIL 3/M4.
7. M.C. SHALL PROVIDE LINED PLENUMS ON TOP OF RETURN GRILLES AS REQUIRED TO MAKE INDICATED DUCT CONNECTS.
8. COORDINATE LINEAR DIFFUSER INSTALLATION WITH G.C. SEE ARCHITECTURAL DWG'S FOR ADDITIONAL INFORMATION.
9. NOT USED.
10. M.C. SHALL PROVIDE FULL SIZED DUCT DROPS THROUGH THE ROOF FOR BOTH SUPPLY AND RETURN FROM RTU-1. PROVIDE DUCT TRANSITIONS FOR SUPPLY AND RETURN AS REQUIRED TO PROVIDE THE DUCT LAYOUTS AS INDICATED ON THE DRAWINGS.
11. M.C. SHALL PROVIDE FULL SIZED DUCT DROPS THROUGH THE ROOF FOR BOTH SUPPLY AND RETURN FROM RTU-2. PROVIDE DUCT TRANSITIONS FOR SUPPLY AND RETURN AS REQUIRED TO PROVIDE THE DUCT LAYOUTS AS INDICATED ON THE DRAWINGS.
12. 18"x8" GREASE EXHAUST DUCT UP TO HEF-1 ON ROOF. M.C. SHALL OFFSET DUCT AS REQUIRED TO AVOID STRUCTURAL BRACING. FIELD VERIFY EXACT LENGTH. MAINTAIN DUCT SLOPE TOWARD HOOD.
13. 10"x8" EXHAUST DUCT UP TO EF-1 ON ROOF. TRANSITION AS REQUIRED TO CONNECT TO FAN. PROVIDE FLEXIBLE CONNECTION AND VIBRATION DAMPER AT CONNECTION TO FAN.
14. 8"x8" EXHAUST DUCT UP TO EF-2 ON ROOF. TRANSITION AS REQUIRED TO CONNECT TO FAN. PROVIDE FLEXIBLE CONNECTION AND VIBRATION DAMPER AT CONNECTION TO FAN.
15. M.C. TO PROVIDE RIGID DUCT CONNECTIONS TO EXHAUST GRILLES, RETURN GRILLES. PROVIDE OPPOSED BLADE DAMPER FOR SHEET ROCK INSTALLATION. NO FLEX DUCT ALLOWED.
16. M.C. SHALL INSTALL MANUAL SUPPRESSION FIRE PULL, PROVIDED BY HOOD SUPPLIER, AT LOCATION SHOWN. MOUNT FIRE PULL @ 48" AFF (BETWEEN 10 & 20 FEET FROM THE COOKING EQUIPMENT SERVED). THE E.C. SHALL PROVIDE RECESSED BOX CONDUIT UP TO CEILING WITH NO BENDS. M.C. & E.C. SHALL COORDINATE.
17. M.C. SHALL PROVIDE PLENUM BOX AROUND RETURN AIR GRILLES AS REQUIRED AND CONNECT RETURN AIR DUCT TO PLENUM BOX.
18. FOR GAS AND CONDENSATE PIPING SEE DWG. P4.
19. NOT USED.
20. 10"x10" EXHAUST DUCT UP TO HEF-2 OF ROOF. TRANSITION AS REQUIRED TO CONNECT TO FAN. PROVIDE FLEXIBLE CONNECTION AND VIBRATION DAMPERS AT CONNECTION TO FAN.
21. COOLING TUNNEL CONDENSER PROVIDED BY KRISPY KREME. EQUIPMENT SHALL BE INSTALLED AND CHARGED BY M.C. SEE SCHEDULE SHEET M1.
22. M.C. TO MOUNT DUCT MOUNTED TEMPERATURE SENSOR IN RETURN DUCT. M.C. SHALL PROVIDE ALL REQUIRED CONTROL WIRING, J-BOX, AND TERMINATIONS.
23. M.C. TO MOUNT DUCT MOUNTED REMOTE HUMIDISTAT IN RETURN DUCT. M.C. SHALL PROVIDE ALL REQUIRED CONTROL WIRING, J-BOX, AND TERMINATIONS.
24. ELECTRICAL DISCONNECT - SEE ELECTRICAL DRAWINGS.
25. PROVIDE PLENUM HEIGHTS ON SLOTS AS REQUIRED TO CLEAR ADJACENT SOFFITS.
26. P.C. SHALL PROVIDE AND INSTALL CONCENTRIC VENT SYSTEM PIPING FROM THE WATER HEATER VENT/FLUE CONNECTION OF THE TYPE LISTED BELOW AND AS REQUIRED PER THE MANUFACTURERS INSTRUCTIONS AND ALL APPLICABLE DETAILS ON THE DRAWING 3/M2.



1 MECHANICAL FLOOR PLAN
SCALE: 1/4" = 1'-0"



2 MECHANICAL ROOF PLAN
SCALE: 1/8" = 1'-0"



3 WATER HEATER FLUE PIPING DETAIL
SCALE: N.T.S.

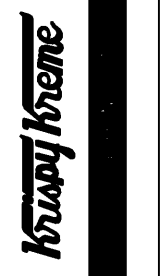
HOOD PROVIDER PREREQUISITES:
IN ORDER TO SCHEDULE ANSUL DISTRIBUTOR TO INSTALL SYSTEM, 72 HOURS NOTICE IS NEEDED TO SCHEDULE INSTALL.
1) FRYER MUST BE SET IN PLACE
2) REMOTE PULL STATION BOX MUST BE RECESSED IN WALL WITH 1/2" CONDUIT STUBBED OUT THE TOP OF WALL

HOOD PROVIDER PREREQUISITES:
IN ORDER TO SCHEDULE AND PASS FIRE MARSHAL TEST, 48 HOURS NOTICE IS NEEDED TO SCHEDULE TEST.
1) POWER TO FRYER MUST SHUT DOWN UPON FIRE DETECTION
2) HORN STROBE MUST SOUND UPON FIRE DETECTION
3) RTU THAT SERVES PRODUCTION ROOM MUST SHUT DOWN UPON FIRE DETECTION
4) HOOD REMOTE SPACE TEMPERATURE SENSOR (SHIPPED LOOSE INSIDE CONTROL PANEL) MUST BE MOUNTED AND WIRED BACK TO CONTROL PANEL

GEORGE SARFATTY, AIA
300 West...
Copyright 2014

KENNETH L. KRAUS
P.E. # 74120
388 Oak Grove Drive
Wauchula, FL 33994
T (847) 719-1708
Plumbing Mechanical Electrical

KRISPY KREME DOUGHNUTS
1730 E. NINE MILE ROAD
PENSACOLA, FL 32514



DATE: 06/23/18
PROJECT NO.: 18-004
CHECKED BY: KIK
DRAWN BY: STAFF
SHEET TITLE: MECHANICAL FLOOR AND ROOF PLANS

SHEET NO.: M2