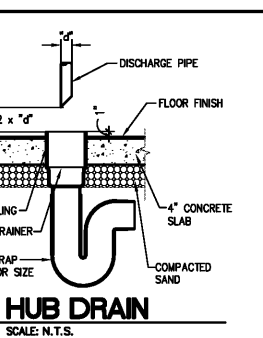
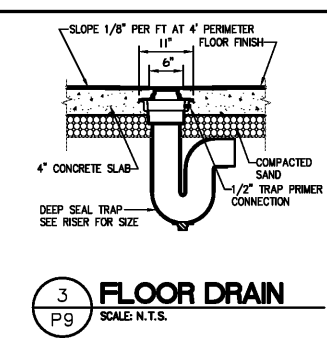


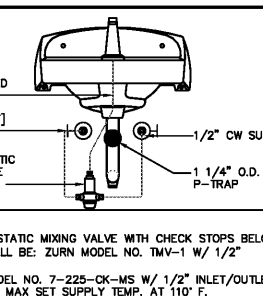
**3M MODEL: TDS250-DP260 WATER FILTER DETAIL**  
SCALE: N.T.S.



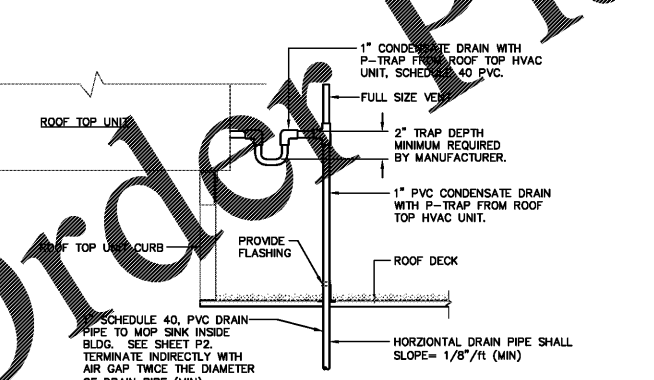
**2 HUB DRAIN**  
SCALE: N.T.S.



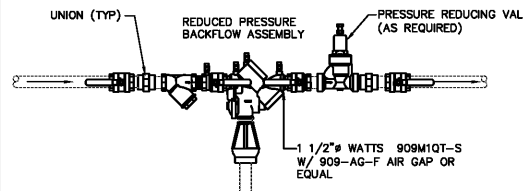
**3 FLOOR DRAIN**  
SCALE: N.T.S.



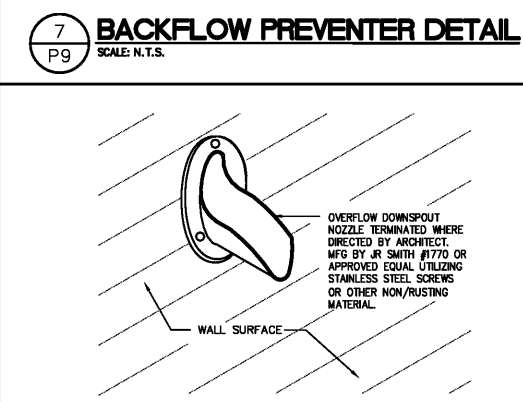
**MIXING VALVE UNDER LAV/HAND SINK DETAIL**  
SCALE: N.T.S.



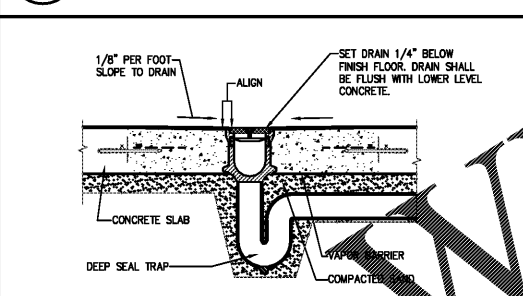
**6 RTU CONDENSATE DRAIN DETAIL**  
SCALE: N.T.S.



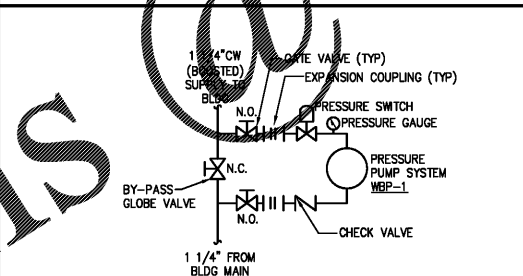
**7 BACKFLOW PREVENTER DETAIL**  
SCALE: N.T.S.



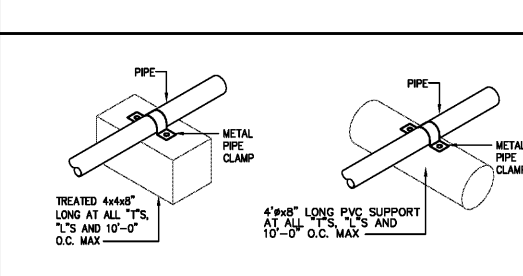
**8 OVER-FLOW DOWNSPOUT NOZZLE**  
SCALE: N.T.S.



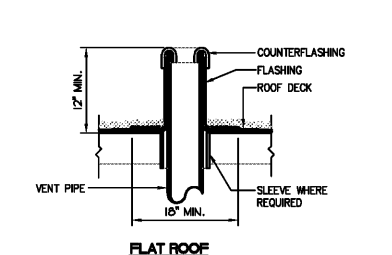
**9 TRENCH DRAIN DETAIL**  
SCALE: N.T.S.



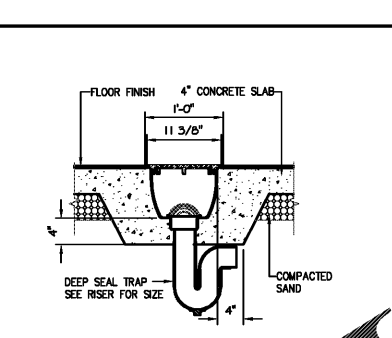
**10 BOOSTER PUMP DIAGRAM**  
SCALE: N.T.S.



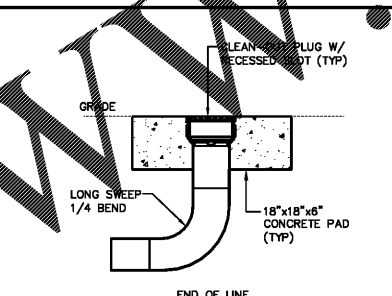
**11 ROOF PIPING SUPPORT**  
SCALE: N.T.S.



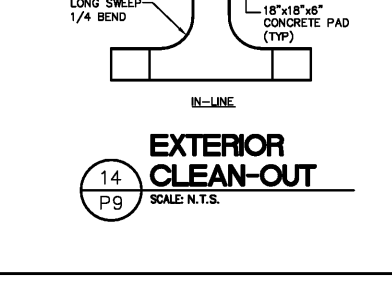
**12 VENT THROUGH ROOF**  
SCALE: N.T.S.



**13 FLOOR SINK**  
SCALE: N.T.S.

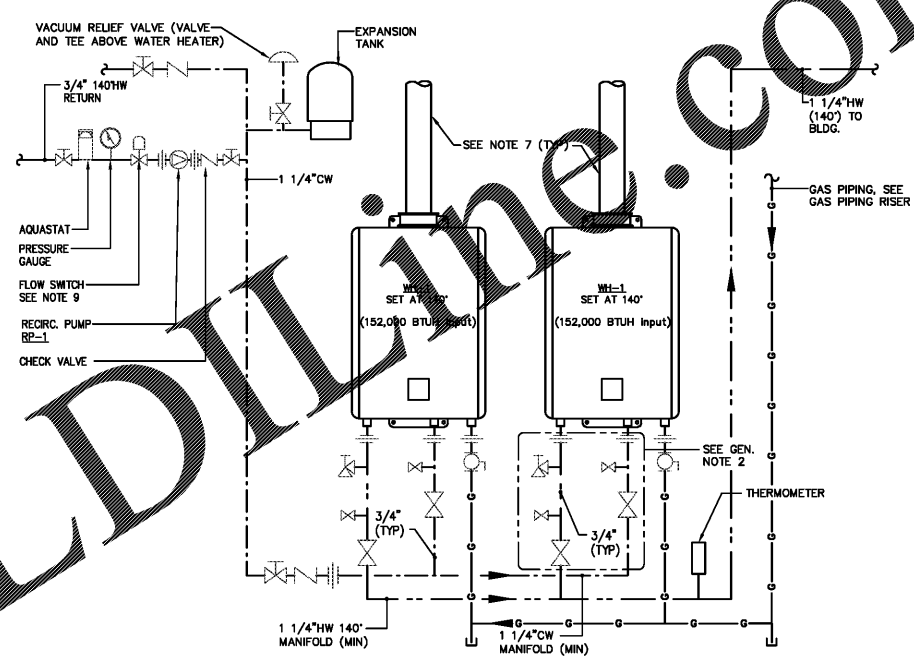


**14 EXTERIOR CLEAN-OUT**  
SCALE: N.T.S.

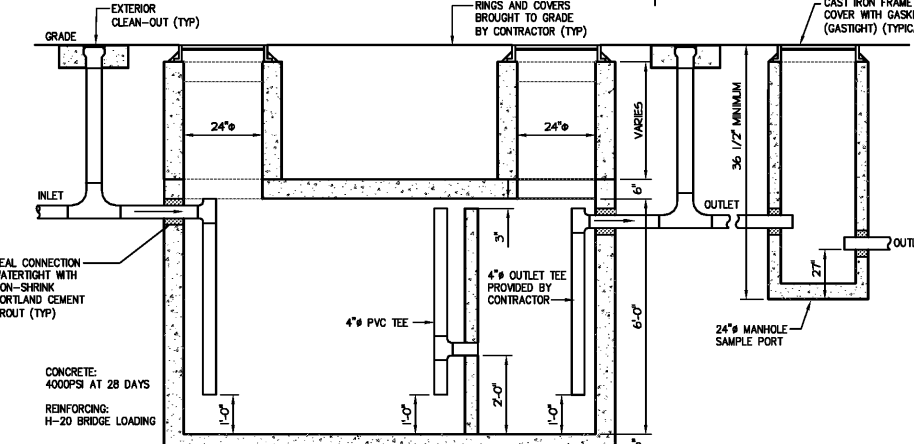
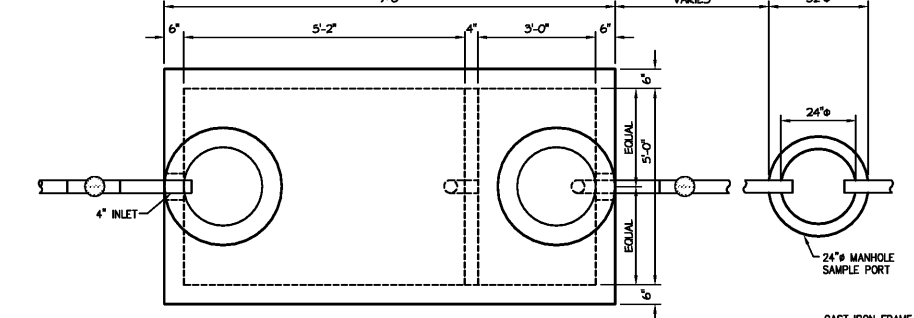


**15 WALL CLEAN-OUT**  
SCALE: N.T.S.

**GENERAL:**  
 1. P.C. SHALL INSULATE CW/HW SUPPLY PIPING FROM WATER HEATER INLET/OUTLET.  
 2. WATER PIPING KIT MODEL: RIK-KIT (SEE DETAIL) PROVIDED WITH EACH WATER HEATER (WH-1). P.C. SHALL PROVIDE AND INSULATE ALL 3/4" PIPING.  
 3. P.C. SHALL PROVIDE ALL CONTROLS WITH PACKAGE AND E.C. SHALL INSTALL ALL CONNECTIONS PER MANUFACTURERS RECOMMENDATIONS.  
 4. P.C. SHALL PROVIDE/INSTALL AND SET AQUASTAT TO TURN PUMP OFF ONCE WATER TEMPERATURE REACHES 140°. SEE SPECIFICATIONS SHEET P1.  
 5. P.C. SHALL INSTALL 3/4" PIPING TO EACH PRESSURE RELIEF VALVE AND ROUTE TO FLOOR WITH A 2" AIR GAP (MIN).  
 6. P.C. SHALL INSTALL 3/4" PIPING TO EACH VENT SYSTEM CONDENSATE COLLECTOR AND ROUTE TO FLOOR WITH A 2" AIR GAP (MIN).  
 7. P.C. SHALL REFER TO MECHANICAL DRAWINGS FOR DETAILS ON ROUTING FLOOR PIPING.  
 8. MOUNT WATER HEATERS ON WALL IN LOCATION AS SHOWN ON PLANS. INSTALL PER MANUFACTURERS RECOMMENDATIONS AND CLEARANCES. REMOTES TO BE PROVIDED AND LABELED IN MANAGERS OFFICE. E.C. SHALL WIRE CONTROLS. COORDINATE WITH G.C.  
 9. P.C. SHALL PROVIDE FLOW SWITCH FOR RECIRCULATION LINE TO SHUT RECIRC PUMP OFF UPON DETECTION OF NO FLOW. P.C. SHALL INSTALL AND TO WIRE CONTROLS.  
 10. P.C. SHALL PROVIDE/INSTALL AND SET CLOCK TIMER TO ISOLATE POWER TO PUMP IN UNOCCUPIED PERIODS (VERIFY DAILY HOURS OF OPERATION WITH OWNER). SEE SPECIFICATIONS SHEET P1.



**16 WATER HEATER DETAIL**  
SCALE: N.T.S.



**NOTE:**  
 GREASE INTERCEPTOR SHALL BE PROVIDED WITH SPECTRASHIELD LINER SYSTEMS AND BARRIER COAT SILICONE MODIFIED POLYUREA, INSTALLED BY GENERAL CONTRACTOR.  
 GREASE INTERCEPTOR SHALL BE PROVIDED AND INSTALLED BY KRISPY KREME NATIONAL VENDOR.

**NOTE:**  
 1. GREASE TRAP AND SAMPLE PORT SHALL BE ENGINEER DESIGNED BY MANUFACTURER TO RESIST ALL LOADS.  
 2. IF PRE-FAB SEPTIC TANK IS USED, THEN TANK SHALL BE MODIFIED TO MEET ALL DETAILS & OPENINGS & NOTES.  
 3. SHOP DRAWINGS SHALL SHOW EXACT DIMENSIONS, WALL THICKNESSES, CONC. STRENGTH, ETC.  
 4. GREASE TRAP INSIDE DIMENSIONS ARE APPROXIMATE & ANY CHANGES IN LENGTH x WIDTH x DEPTH SHALL BE ADJUSTED IN PROPORTIONS SHOWN.  
 5. REPRESENTATIVE: JACK ACKER, ACKER & ASSOCIATES, 404-217-8000

**17 GREASE INTERCEPTOR**  
SCALE: N.T.S.

**KRISPY KREME**  
 KRISPY KREME DOUGHNUTS  
 1730 E. NINE MILE ROAD  
 PENSACOLA, FL 32514

**KENNETH L. KRAUS**  
 P.E. # 74120  
 388 Oak Grove Drive  
 Wausonville, OH 43084  
 T (847) 719-1708 F (847) 719-1738  
 Plumbing Mechanical Electrical

**Krispy Kreme**

SEAL  
 LICENSE  
 74120  
 STATE OF  
 FLORIDA  
 PROFESSIONAL ENGINEER  
 MECHANICAL  
 DATE: 06/23/18

PROJECT NO.: 18.004  
 CHECKED BY: KJK  
 DRAWN BY: STAFF  
 SHEET TITLE: PLUMBING DETAILS  
 SHEET NO.:

**P9**

**Order Plans**