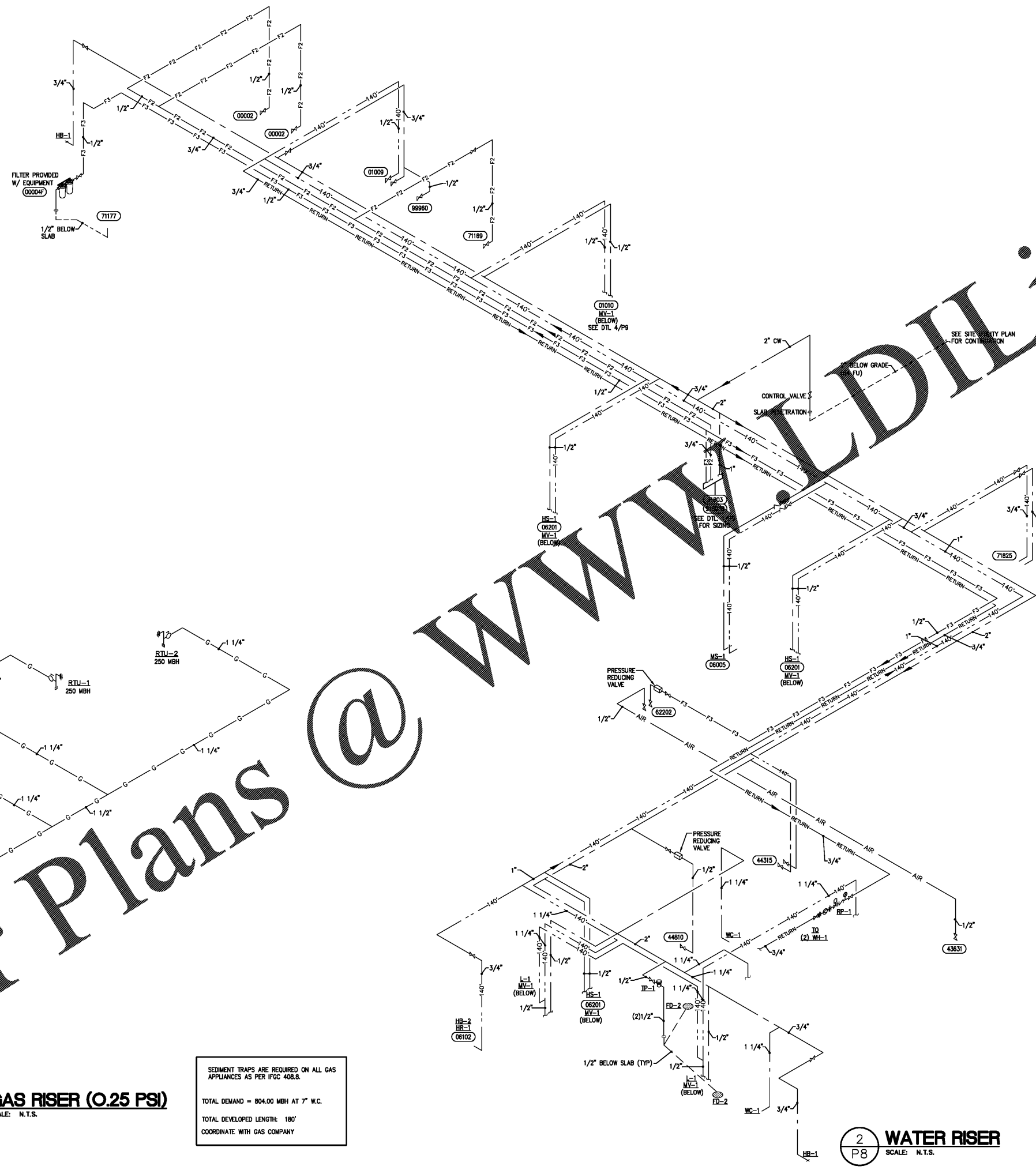


**Order Plans**

**WWW.DILine.com**



**1**  
P8  
**GAS RISER (0.25 PSI)**  
SCALE: N.T.S.

SEDIMENT TRAPS ARE REQUIRED ON ALL GAS APPLIANCES AS PER IFGC 408.8.  
TOTAL DEMAND = 804.00 MBH AT 7\" W.C.  
TOTAL DEVELOPED LENGTH: 180'  
COORDINATE WITH GAS COMPANY

**2**  
P8  
**WATER RISER**  
SCALE: N.T.S.

**GEORGE SARFATTY, AIA**  
300 West Street, Suite 410, Pompano Beach, FL 33062  
(954) 781-1100 www.diline.com  
Copyright © 2014

**KENNETH L. KRAUS**  
P.E. # 74120  
386 Oak Grove Drive  
Wausonola, FL 32094  
T (847) 719-1708 F (847) 719-1738  
Plumbing ♦ Mechanical ♦ Electrical

**KRISPY KREME DOUGHNUTS**  
1730 E. NINE MILE ROAD  
PENSACOLA, FL 32514



DATE: 06/23/18  
PROJECT NO.: 18-004  
CHECKED BY: KIK  
DRAWN BY: STAFF  
SHEET TITLE:  
**PLUMBING WATER AND GAS RISER**

**P8**