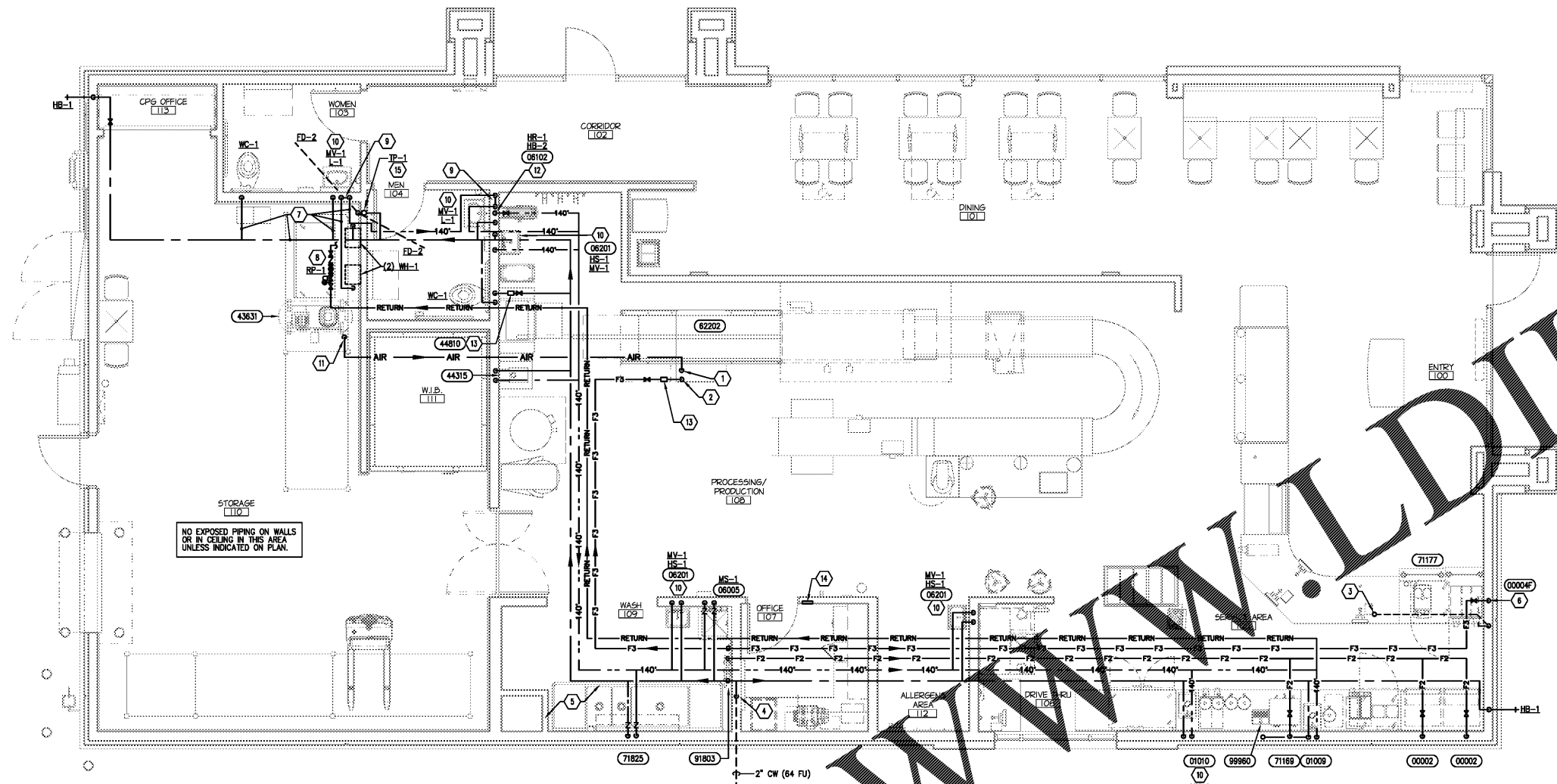


GENERAL NOTES:

- SEE SHEET P1 FOR ALL GENERAL NOTES.
- DUCTWORK, CONDUIT AND PIPING SHALL BE INSTALLED BETWEEN TRUSSES OR THROUGH TRUSSES IN CEILING SHIPPING ROOM AS SHOWN WITH ALL ITEMS LOCATED ABOVE THE BOTTOM OF STRUCTURE UNLESS OTHERWISE NOTED ON PLAN.
- P.C. SHALL PROVIDE METAL BRAIDED SUPPLY LINE FROM WALL TO EQUIPMENT FOR ALL PRODUCTION AND WASHROOM AREA EQUIPMENT.
- P.C. SHALL TEST ALL EQUIPMENT AND PIPING CONNECTIONS FOR LEAKS AS PART OF FINAL COMPLETION OF CONSTRUCTION PROCESS.

CONSTRUCTION NOTES:

- SHALL ROUTE AIR LINE ABOVE CEILING AND DROP BELOW CEILING WITH BALL VALVE ON END. SEE SHEET EQ-1 FOR EXACT LOCATION.
- P.C. SHALL ROUTE FILTERED WATER FROM ABOVE CEILING TO PROOFER AND DROP BELOW CEILING WITH FULL PORT BALL VALVE ON END. SEE SHEET EQ-1 FOR EXACT LOCATION.
- 1/2" FW BELOW SLAB TO STUB-UP WITH SHUT OFF VALVE.
- 2" WATER SERVICE UP FROM BELOW SLAB, PROVIDE MAIN SHUT OFF VALVE CONCEALED IN WALL CAVITY AT 48" A.F.F. PROVIDE MIFAB MODEL UASSBORO, STAINLESS STEEL ACCESS PANEL FOR MAIN SHUT OFF VALVE ACCESSIBILITY. BACKFLOW PREVENTER LOCATED ON SITE. SEE SITE PLAN FOR EXACT LOCATION.
- ALL ITEMS IN WASH ROOM AREA MUST BE INSTALLED ABOVE CEILING UNLESS SPECIFIED ON PLANS TO BE BELOW CEILING.
- CONNECT FILTERED WATER LINE TO ADDITIONAL FILTER SUPPLIED WITH EQUIPMENT MOUNTED UNDER COUNTER. CONNECT OUTLET LINE FROM FILTER TO EQUIPMENT.
- ROUTE HORIZONTAL WATER PIPING ABOVE BOTTOM CHORD OF STRUCTURE.
- LOCATE HOT WATER RECIRCULATION PUMP (RP-1) ABOVE, TIGHT TO BOTTOM CHORD OF STRUCTURE.
- ROUTE HW (140") MAIN DOWN TO MIXING VALVE AND FIXTURE AND BACK TO ABOVE CEILING.
- P.C. SHALL INSTALL MIXING VALVE BELOW LAVATORY/HAND SINK. SET MIXING VALVE AT 110" (MAX). SEE DETAIL 4/PS.
- P.C. SHALL PROVIDE COPPER PIPING TO AIR COMPRESSOR. QUICK DISCONNECT AND FULL PORT BALL VALVE AT AIR COMPRESSOR CONNECTION.
- P.C. SHALL INSTALL STAINLESS STEEL PIPING CONNECTIONS AT HOSE REEL.
- P.C. SHALL PROVIDE PRESSURE REDUCING VALVE UPSTREAM OF EQUIPMENT CONNECTION.
- P.C. SHALL PROVIDE WATER HEATER CONTROLLER IN MANAGERS OFFICE. E.C. SHALL PROVIDE ELECTRICAL CONNECTIONS. SEE SHEET A15 FOR EXACT LOCATION OF CONTROLLER.
- 1/2" CW BELOW SLAB FROM UPSTREAM SIDE OF FD-2 P-TRAP TO TRAP PRIMER. PROVIDE TRAP PRIMER ABOVE CEILING IN ACCESSIBLE LOCATION.



1 WATER PLAN
P3 SCALE: 1/4" = 1'-0"

GEORGE SARFATTY, AIA
300 West Street, Suite 410, Pompano Beach, FL 33062
(954) 781-1100 www.gsa.com Copyright 2014

KENNETH L. KRAUS
P.E. # 74120
308 Oak Grove Drive
Wausonville, FL 32094
T (847) 719-1708 F (847) 719-1738
Plumbing Mechanical Electrical

KRISPY KREME DOUGHNUTS
1730 E. NINE MILE ROAD
PENSACOLA, FL 32514



IF ANY DISCREPANCIES ARE FOUND ON THE PLANS, THE PLUMBING CONTRACTOR SHALL BID AND INSTALL THE MORE CONSERVATIVE SPECIFICATION AND CALL ENGINEER FOR CLARIFICATION.

WHILE EVERY ATTEMPT HAS BEEN MADE IN THE PREPARATION OF THIS PLAN TO AVOID MISTAKES, THE DESIGNER AND COMPANY CANNOT GUARANTEE AGAINST ERROR OR UNFORESEEN FIELD CONDITIONS. THE CONTRACTOR OR BUILDER MUST CHECK ALL DIMENSIONS, DETAILS AND REPORT ANY DISCREPANCIES.

PROJECT NO.:	18-004
CHECKED BY:	KLK
DRAWN BY:	STAFF
SHEET TITLE:	PLUMBING WATER SUPPLY PLAN
SHEET NO.:	

Order Plans @