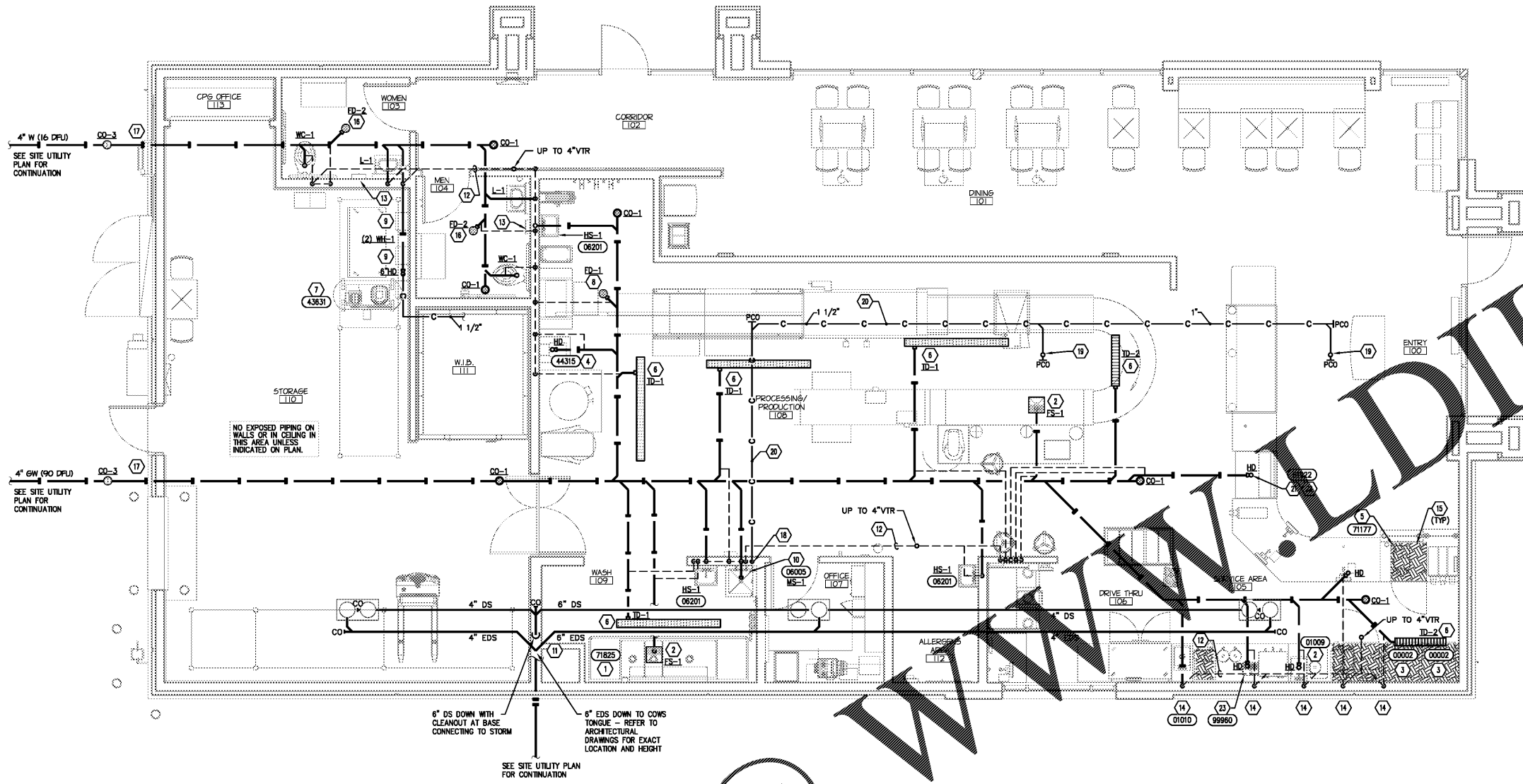


Order Plans



1 WASTE / VENT PLAN
 P2 SCALE: 1/4" = 1'-0"

GENERAL NOTES:

- SEE SHEET P1 FOR ALL GENERAL NOTES.

CONSTRUCTION NOTES:

- COLLECT 2" SINK COMPARTMENT DRAINS AND DISCHARGE TO FLOOR SINK. PROVIDE AIR GAP TWICE THE DIAMETER OF THE DRAIN PIPE.
- ROUTE EQUIPMENT DRAIN(S) DOWN TO HUB DRAIN. PROVIDE AIR GAP TWICE THE DIAMETER OF THE DRAIN PIPE.
- ROUTE ICE MAKER DRAIN PIPING TO HUB DRAIN. TERMINATE WITH AIR GAP TWICE THE DIAMETER OF THE DRAIN PIPE.
- ROUTE 1" PIPING FOR WATER METER DRAIN DOWN TO HUB DRAIN. PROVIDE AIR GAP TWICE THE DIAMETER OF THE DRAIN PIPE. ANCHOR DRAIN PIPE TO WALL AND CONNECT TO WATER METER DRAIN OUTLET WITH FLEXIBLE TUBING.
- ROUTE DRAIN LINE FOR SCHAERER COFFEE ART PLUS MACHINE DOWN THRU PROGRAMMABLE IN TOP OF CABINET AND SECURED TO BACK SIDE OF CABINETRY TO THE DRAIN. PROVIDE WITH 2" AIR GAP (MIN.).
- TRAP DRAIN. INSTALL 1/4" BELOW FINISHED FLOOR AND SLOPE SLAB TOWARD DRAIN AT 1/8" PER FOOT. DRAIN SHALL BE SET LEVEL WITH CONCRETE, 1/4" BELOW FINISHED FLOOR.
- G.C. SHALL PROVIDE AND INSTALL A SPEEDAER AUTO DRAIN VALVE MODEL: 13X528 AT AIR COMPRESSOR. P.C. SHALL ROUTE SCH. 40 PVC CONDENSATE LINE WITH UNION & SHUT OFF VALVE IN ACCESSIBLE LOCATION FROM AIR COMPRESSOR ABOVE. DOWN WALL TO HUB DRAIN SERVING WATER HEATERS. TERMINATE WITH AIR GAP TWICE THE DIAMETER OF DRAIN PIPE.
- FLOOR DRAIN. INSTALL 1/8" BELOW LEVEL CONCRETE SLAB. AND SLOPE SLAB TOWARD DRAIN AT 1/8" PER FOOT.
- ROUTE, INDIVIDUALLY, WATER HEATER TAP RELIEF VALVE DRAINS TO HUB DRAIN AND TERMINATE WITH AIR GAP TWICE THE DIAMETER OF THE DRAIN PIPE.
- MOP SINK BASIN TO BE INSTALLED BEFORE EPOXY FLOORING IS POURED.
- ROUTE FILTER DRAIN DOWN WALL AND DISCHARGE INTO MOP SINK. PROVIDE AIR GAP TWICE THE DIAMETER OF DRAIN PIPE AT TERMINATION. SECURE PIPE TO WALL WITH PIPE CLAMPS.
- RUN HORIZONTAL VENT PIPING ABOVE BOTTOM CHORD OF STRUCTURE TO VTR LOCATION.
- RECESSED TRASH RECEPTACLE NO PLUMBING PIPING IN THIS AREA. COORDINATE WITH ARCHITECTURAL PLANS.
- FIXTURE AND ALL ASSOCIATED WASTE AND VENT PIPING SHALL BE INSTALLED PRIOR TO POURING OF FOOTINGS. PIPING AND FITTINGS SHALL BE ENCASED IN CONCRETE.
- HATCHING INDICATES FLOOR MOUNTED EQUIPMENT. NO FLOOR RECEPTORS ALLOWED IN HATCHED AREAS.
- 1/2" PIPING BELOW SLAB FROM TRAP PRIMER (TP-1) TO UPSTREAM OF FD-2 P-TRAP. SEE DETAIL 3/P9.
- WASTE PIPING SHALL DROP TO ROUTE BELOW CONCRETE FOOTING.
- ROUTE 1 1/2" CONDENSATE DRAIN MANIFOLD PIPING DOWN INSIDE WALL TO MOP SINK. TERMINATE WITH AIR GAP TWICE THE DIAMETER OF DRAIN PIPE.
- 1" CONDENSATE DRAIN PIPING FROM RTU ABOVE. SEE DETAIL 6/P9.
- ROUTE CONDENSATE DRAIN PIPING AS HIGH AS POSSIBLE.
- REMOVE CONDENSATE COLLECTOR PAN FROM REACH IN COOLER AND PIPE DRAIN TO HUB DRAIN. TERMINATE WITH AIR GAP TWICE THE DIAMETER OF DRAIN PIPING.
- HUB DRAIN TO STUB UP INSIDE CASEWORK BASE FOR REACH-IN COOLER.
- ROUTE WATER FILLER DRAIN PIPING TO HUB DRAIN. TERMINATE WITH AIR GAP TWICE THE DIAMETER OF THE DRAIN PIPING.

IF ANY DISCREPANCIES ARE FOUND ON THE PLANS, THE PLUMBING CONTRACTOR SHALL BID AND INSTALL THE MORE CONSERVATIVE SPECIFICATION AND CALL ENGINEER FOR CLARIFICATION.

WHILE EVERY ATTEMPT HAS BEEN MADE IN THE PREPARATION OF THIS PLAN TO AVOID MISTAKES, THE DESIGNER AND COMPANY CANNOT GUARANTEE AGAINST ERROR OR UNFORESEEN FIELD CONDITIONS. THE CONTRACTOR OR BUILDER MUST CHECK ALL DIMENSIONS, DETAILS AND REPORT ANY DISCREPANCIES.

GEORGE SARFATTY, AIA
 300 Davis Street, Suite 410, Fernandina, FL 32030
 904/761-1100 www.gsaia.com Copyright © 2014

KENNETH L. KRAUS
 P.E. # 74120
 308 Oak Grove Drive
 Wauchula, FL 33994
 T (847) 719-1708 F (847) 719-1738
 Plumbing Mechanical Electrical

KRISPY KREME DOUGHNUTS
 1730 E. NINE MILE ROAD
 PENSACOLA, FL 32514



PROJECT NO.: 18-004
 CHECKED BY: KJK
 DRAWN BY: STAFF
 SHEET TITLE: PLUMBING WASTE/VENT PLAN
 SHEET NO.:

P2