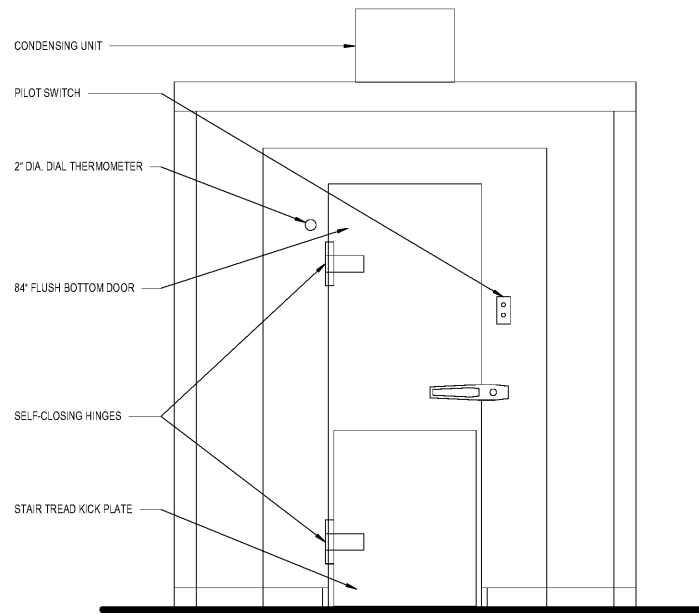
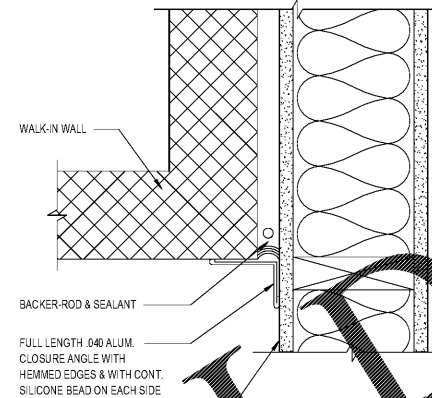


1 W.I.B. PLAN DETAIL
SCALE: 3/4" = 1'-0"

NOTE:
G.C. TO COMPLY WITH ALL W.I.B.
MANUFACTURER RECOMMENDATIONS
FOR PREPERATION AND
INSTALLATION OF W.I.B. SLAB.



2 W.I.B. ELEVATION
SCALE: 3/4" = 1'-0"



REFER TO FINISH FLOOR PLAN FOR
FLOOR FINISHES AND INTERIOR
ELEVATIONS FOR WALL FINISHES

3 W.I.B. CORNER DETAIL
SCALE: 3/4" = 1'-0"

GENERAL NOTES

- CONTRACTOR SHALL NOT SCALE OFF DRAWINGS.
- CONTRACTOR SHALL VERIFY ALL DIMENSIONS & CONDITIONS IN FIELD AND NOTIFY ARCHITECT IMMEDIATELY OF ANY DISCREPANCIES IN THE DRAWINGS OR FIELD CONDITIONS AND SHALL NOT PROCEED WITH WORK UNTIL ANY DISCREPANCIES ARE RESOLVED.
- ALL WORK SHALL BE DONE IN ACCORDANCE WITH THE APPLICABLE CODES AS INTERPRETED BY THE GOVERNING AUTHORITIES.
- ALL ITEMS SPECIFIED SHALL BE USED AS PART OF THE WORK UNLESS OTHER ITEMS OF EQUAL QUALITY ARE SUBMITTED IN WRITING & APPROVED BY THE ARCHITECT & OWNER.
- CONTRACTOR SHALL PROVIDE ALL MATERIAL AND IN-WALL HIDDEN BLOCKS REQUIRED FOR WALK-IN ITEMS, EQUIPMENT & OTHER CONSTRUCTION.
- REFER TO SHEET A4.0 FOR FINISH SCHEDULE.
- CONTRACTOR SHALL COORDINATE WITH EQUIPMENT CONTRACTOR TO COORDINATE AND VERIFY ALL FINAL ELECTRICAL AND PLUMBING ROUGH-INS WITH THE OWNER FOR FINAL INSTALLATION SO THAT NO PLUMBING OR ELECTRICAL CONNECTIONS ARE IN CONFLICT WITH NEW EQUIPMENT AND REQUIREMENTS ARE PRESENT FOR FULL OPERATION OF EQUIPMENT.
- CLEAN ALL DOORS, WINDOWS, GLASS, FLOORS, CARPETS & OTHER SURFACES SOILED DURING CONSTRUCTION. REPAIR OR REPLACE ANY ITEMS OR SURFACES DAMAGED AS A RESULT OF CONSTRUCTION.
- ALL BIDDING CONTRACTORS ARE REQUIRED TO VISIT THE SITE PRIOR TO SUBMITTING FINAL PROPOSAL/PRICING. CONTRACTOR IS EXPECTED TO BE FAMILIAR WITH THE SITE & BE AWARE OF EXISTING CONDITIONS. NO CHANGE ORDERS WILL BE APPROVED FOR WORK ARISING FROM CONDITIONS WHICH COULD HAVE BEEN OBSERVED BY VISITING THE SITE OR ARE NOT HIDDEN CONDITIONS.
- ALL WORK BY GENERAL & SUB CONTRACTORS SHALL BE DONE IN CONFORMANCE WITH GENERALLY ACCEPTED CONSTRUCTION PRACTICES TO ACHIEVE THE DESIGN INTENT IN COORDINATION WITH THE DRAWINGS & SPECIFICATIONS INCLUDED IN THE CONTRACT DOCUMENTS.

WALK-IN BOX NOTES

- COOLER REFRIGERATION SHALL BE SIZED TO MAINTAIN 34° FAHRENHEIT. WALK-IN COOLER SHALL BE PROVIDED BY MANUFACTURER.
- THE WALK-IN MANUFACTURER WILL PROVIDE:
 - THE WALK-IN COOLER
 - REFRIGERATION EQUIPMENT SIZED TO MEET KRISPY KREME REQUIREMENTS, FACTORY ASSEMBLED AND WITH LOW AMBIENT CONTROLS, INCLUDING ALL WIRING, REFRIGERATION PIPING, W/ REMOTE UNITS MOUNTED ON S.S. RAILS LOCATED ON THE ROOF, AND READY FOR FINAL CONNECTION TO ALL NECESSARY UTILITIES.
 - DELIVERY OF THE BOXES
 - FLASHING KITS AS NOTED
 - CONTRACTOR TO INSTALL WALK-IN BOX AND REFRIG.
- IT SHALL BE THE RESPONSIBILITY OF THE G.C. TO CONTACT WALK-IN BOX PROVIDER AND OBTAIN A COPY OF THE SHOP DRAWINGS FOR THIS PROJECT PRIOR TO ROUGH-IN OF UTILITIES. FAILURE TO OBTAIN SHOP DRAWINGS PRIOR TO ROUGH-IN WILL NOT RESULT IN EXTRA CHARGES TO THE OWNER FOR RELOCATION OF UTILITIES. CONTACT KRISPY KREME FOR APPROVED VENDOR. KRISPY KREME DAVID MORRIS DMORRIS@KRISPYKREME.COM

GEORGE SARTY, AIA
Copyright © 2018

KRISPY KREME DOUGHNUTS
1730 EAST 9 MILE ROAD
PENSACOLA, FL 32514



SEAL:

DATE: 08/23/18
PROJECT NO.: 18-004
CHECKED BY: Checker
DRAWN BY: Author
SHEET TITLE:
W.I.B. DETAILS

SHEET NO.:

A17.0

Order Plans @ WWW.LDILine.com