

RESTROOM SCHEDULE

ITEM	DESCRIPTION	MFR.	MODEL	SIZE	REMARKS	FURN. BY
1	SOAP DISPENSER	ASI	#0347	SEE ELEV	SURFACE MOUNTED**	KK
2	WALL HUNG LAVATORY	SEE PLUMBING DWGS	SEE PLUMBING DWGS	20" x 18"	SEE PLUMBING DWGS	GC
3	GRAB BARS	ASI	3800 SERIES	(11') 1-1/2" x 42"; (11') 1-1/2" x 36"; (11') 1-1/2" x 24"	SURFACE MOUNTED**	GC
4	TOILET PAPER DISPENSER	ASI	#0030		SURFACE MOUNTED**	KK
5	MIRROR					
6	WASTE RECEPTACLE	ASI	#6474 SERIES	SEE ELEV	FULLY-RECESSED	GC
7	PAPER TOWEL DISPENSER					
8	COAT HOOK	BOBRICK	#8627	SEE ELEV	SURFACE MOUNTED**	GC
9	FLOOR MOUNTED WATER CLOSET	SEE PLUMBING DWGS	SEE PLUMBING DWGS	SEE PLUMBING DWGS	SEE PLUMBING DWGS	GC
10	WOMEN'S NAPKIN DISPOSAL	BOBRICK		17-3/16" x 12-3/4" x 4"	FLOOR MOUNTED	GC
11	ADA RESTROOM SIGNS				SURFACE MOUNTED	GC
12	HALF DOME DOOR BUMPER	BALDWIN		1906 D/A	FLOOR MOUNTED	GC
13	HORIZONTAL BABY CHANGING STATION	BOBRICK	KB200-05	22 1/4" X 35 3/16" X 23 3/16" (E.V.)	FLOOR MOUNTED	GC

NOTE: MODELS & MANUFACTURERS GIVEN AS GUIDE — CONTRACTOR TO COORDINATE W/ OWNER & PAPER SUPPLIER ON ACTUAL UNITS. CONTRACTOR TO INSTALL ALL ITEMS.

* QUANTITY OF GRAB BARS REQUIRED PER RESTROOM.

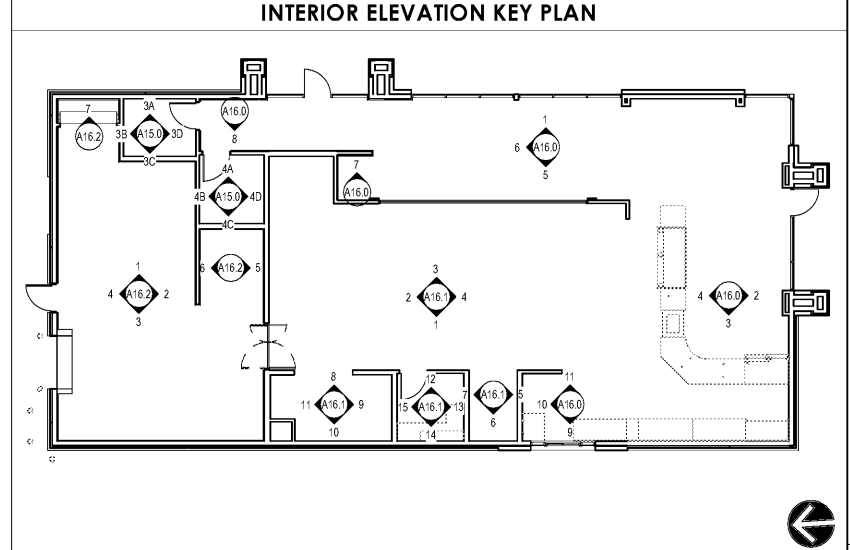
** WALL MOUNTED ITEM MAY NOT PROJECT GREATER THAN 4" FROM WALL.

PARTIAL FINISH SCHEDULE

ITEM	DESCRIPTION	MANUFACTURER	SPECIFICATION	REMARKS
CB-1	STAINLESS STEEL COVE BASE	SCHLUTER SYSTEMS	4" x 1/2" x 1/8" FINISH	CONTINUOUS
GT-2	GROUT	LATICRETE	ANTIQUE WHITE	GROUT FOR WT-2 & WT-3
PT-3	PAINT	BENJAMIN MOORE	Z142 SATIN SAGE	SATIN ON WALLS
PT-5	PAINT	BENJAMIN MOORE	PM-18 MANTON RED	SATIN ON CEILINGS AND WALL
WT-3	WALL TILE	DALTILE	ELEVATION MASTER EL41 4"X16"	INSTALLED HORIZONTALLY, BRICK PATTERN, STAGGERED 50%; GROUT GT-2

ACCESSIBILITY KEYNOTES

- 48" MIN. DOOR CLEARANCE
- 54" MIN. DOOR CLEARANCE
- 60" DIA. TURNING SPACE
- 30" X 48" LAVATORY CLEARANCE
- 60" X 56" WATER CLOSET CLEARANCE
- 30" X 48" BABY CHANGING STATION CLEARANCE

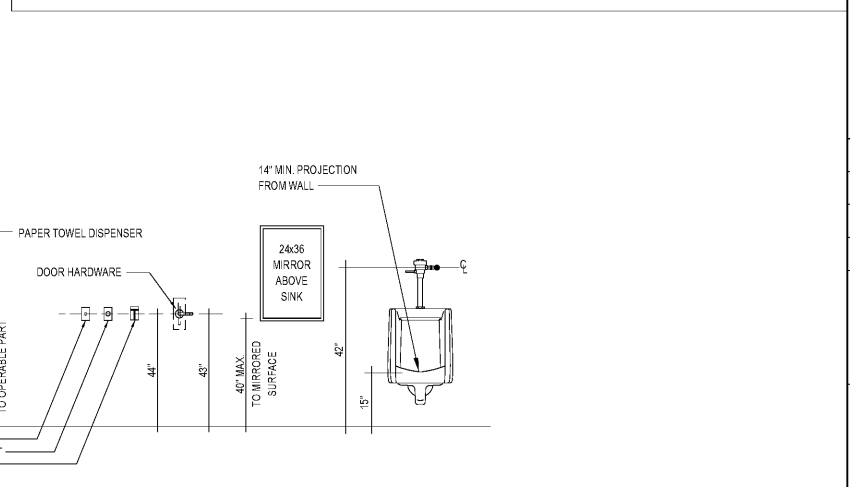
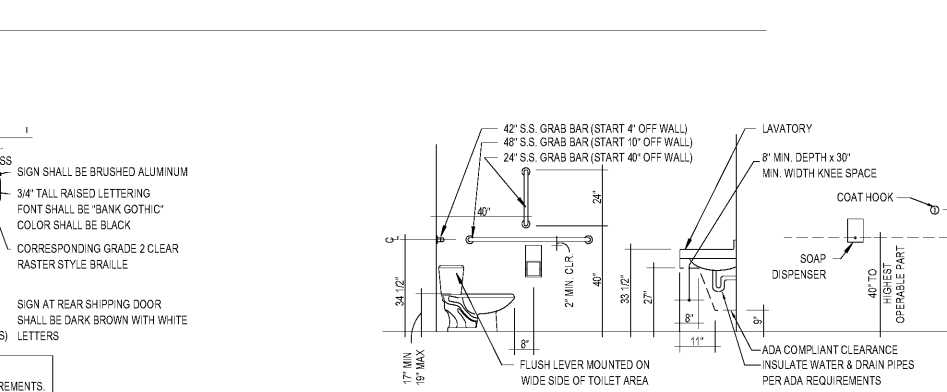
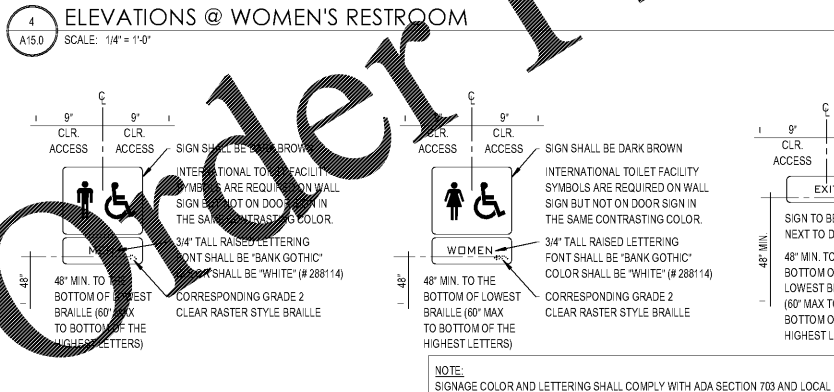
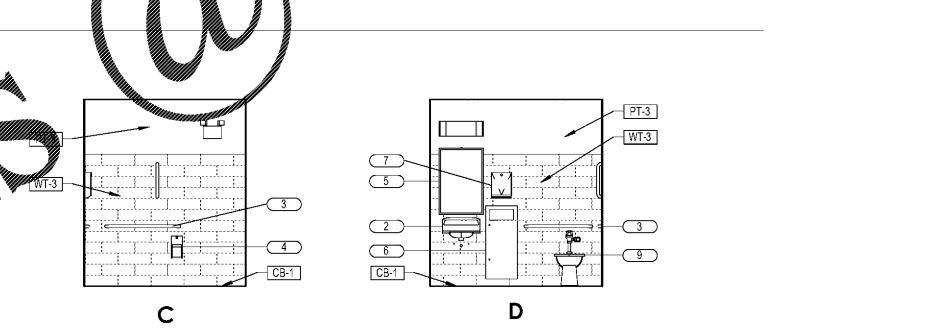
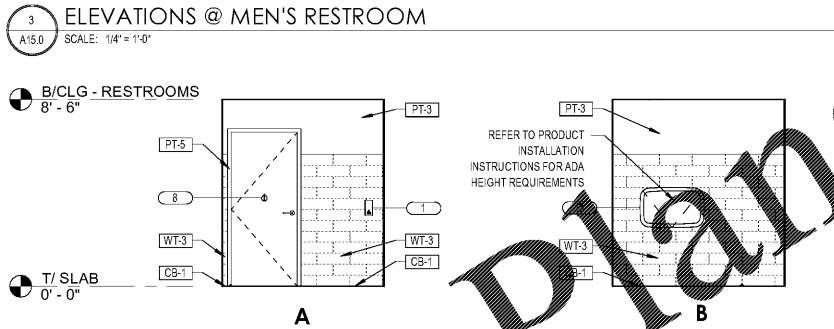
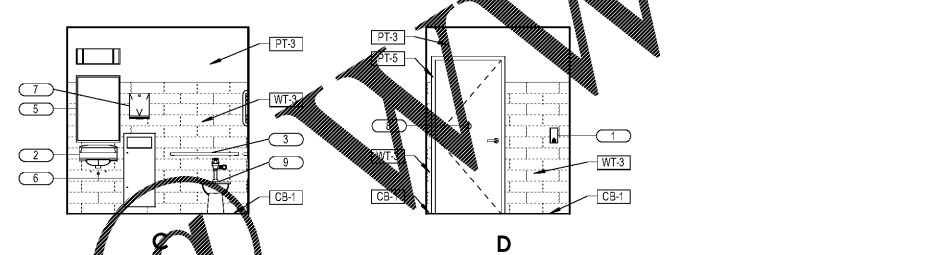
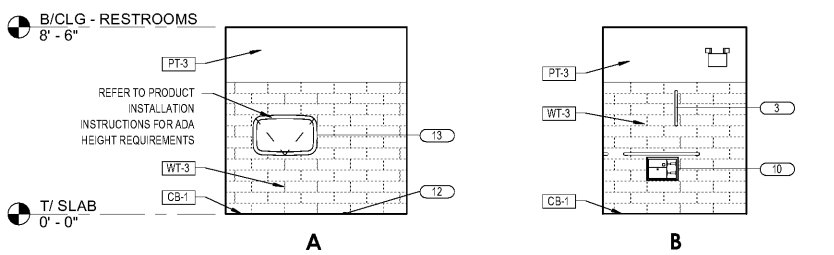


1 ENLARGED RESTROOM DIMENSIONED PLAN
A15.0 SCALE: 1/2" = 1'-0"

NOTE: RESTROOM EQUIPMENT DEPICTED IS ILLUSTRATIVE IN NATURE. GC TO ENSURE ALL EQUIPMENT PROJECTING FROM WALL DO NOT EXCEED 4" IN DEPTH.

2 ENLARGED EQUIPMENT & ACCESSIBILITY PLAN
A15.0 SCALE: 1/2" = 1'-0"

NOTE: RESTROOM EQUIPMENT DEPICTED IS ILLUSTRATIVE IN NATURE. GC TO ENSURE ALL EQUIPMENT PROJECTING FROM WALL DO NOT EXCEED 4" IN DEPTH.



GEORGE SARFATTY, AIA
1000 University Ave., Suite 415, Pensacola, FL 32504
Copyright © 2019

KRISPY KREME DOUGHNUTS
1730 EAST 9 MILE ROAD
PENSACOLA, FL 32514

Krispy Kreme

SEAL: _____

DATE: 08/23/18

PROJECT NO.: 18-004

CHECKED BY: JML

DRAWN BY: DW/DRN/HH

SHEET TITLE: RESTROOM PLAN & ELEVATIONS

SHEET NO.: A15.0