

**GENERAL NOTES**

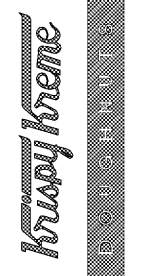
- FOR REFLECTED CEILING PLAN, SEE DWGS A2.0 & A3.0.
- FOR DOOR & WINDOW SCHEDULE, SEE DWG A18.0.
- FOR EQUIPMENT, SEE DWG EQ1.0.
- NEW WALL COVERING GRAPHICS BY OWNER'S VENDOR, G.C. SHALL PREPARE WALLS AS REQUIRED TO A SMOOTH SURFACE AND PRIME PER MANUFACTURER'S SPECIFICATIONS.

**ELEVATION KEYNOTES**

- DECORATIVE EXTERIOR LIGHTS - MOUNT AT 8'-0" TO CENTER OF FIXTURE - REFER TO ELECTRICAL DWGS.
- STOREFRONT WINDOWS - SEE SHEET A18.0 FOR ADDITIONAL INFORMATION.
- EXTERIOR WALL SIGNAGE - PROVIDE OWNER'S SIGNAGE VENDOR TO COORDINATE WITH SIGNAGE VENDOR AND PROVIDE ELECTRICAL SUPPLY AND BLOCKING AT SIGN LOCATIONS AS REQUIRED - SEE ELECTRICAL SHEETS FOR J-BOX LOCATION.
- SAFETY GLAZING - TINTING AND LOW E AS REQUIRED TO MEET ENERGY CODE REQUIREMENTS AS INDICATED IN CODE SUMMARY. EXTERIOR DOOR PER SCHEDULE - SEE SHEET A18.0.
- DRIVE THRU WINDOW PROVIDED AND INSTALLED BY GC.
- INTERIOR WINDOW SIGNAGE BY SIGNAGE VENDOR - UNDER SEPARATE CONTRACT AND PERMIT.
- CANOPY BY SIGNAGE VENDOR - UNDER SEPARATE CONTRACT AND PERMIT. GC TO PROVIDE BLOCKING AS REQUIRED.
- EXTERIOR HOLLOW METAL DOOR & FRAME PAINT P-1. SEE DOOR SCHEDULE ON SHEET A18.0.
- EXTERIOR METAL ROLL UP DOOR & FRAME - PREFINISHED. SEE DOOR SCHEDULE ON SHEET A18.0.
- ELECTRICAL SERVICE EQUIPMENT - COORDINATE EXACT DIMENSIONS WITH MANUFACTURER. GC SHALL PROVIDE CONTINUOUS WEATHER SEALANT ALL AROUND EQUIPMENT AND AT PENETRATIONS INTO BUILDING - PAINT P-1.
- GAS METER - SEE PLUMBING DRAWINGS - PROVIDE WEATHER SEAL AT PENETRATIONS INTO BUILDING - PAINT P-1.
- LINE OF ROOF BEYOND.
- SOLDER COURSE.
- METAL 2-PIECE SNAP ON COMPRESSION EDGE PROVIDED BY G.C. THRU ROOFING CONTRACTOR. G.C. RESPONSIBLE FOR COORDINATION OF CONSTRUCTION SCHEDULE. SEE SHEET A14.0 FOR DETAILS.
- ROOF TOP EQUIPMENT - SEE MECHANICAL DRAWINGS FOR ADDITIONAL INFORMATION.
- BOTTOM SIDE OF EIFS SOFFIT SHALL BE E-1.
- EMERGENCY LIGHT FIXTURE, MOUNT BOTTOM OF FIXTURE AT 8'-0" A.F.F.
- COW'S TONGUE, GC TO PROVIDE BROWN EXTERIOR GRADE SIGN ABOVE COW'S TONGUE, WITH WHITE ROUTED LETTERS STATING "IF WATER IS COMING FROM THIS FIXTURE PLEASE NOTIFY MANAGEMENT" - SEE PLUMBING DRAWINGS FOR ADDITIONAL INFORMATION.
- PROVIDE 180° VIEWER AT DOOR TO STORAGE - SEE DOOR SCHEDULE FOR ADDITIONAL INFORMATION.
- LADDER TO ROOF WITH HINGED LOCKABLE SECURITY LADDER ACCESS GATE, REFER TO WALL SECTION SA11.0 FOR MORE INFORMATION.
- EXTERIOR AIR CURTAIN - SEE EQUIPMENT SCHEDULE FOR ADDITIONAL INFORMATION.
- DOORBELL.
- FROST PROOF HOSE BIB.
- EIFS V-GROOVE, TYP.
- BOLLARD, TYP. - REFER TO DETAIL 6SP1.1.
- BRAKE METAL WRAPPING AT BLOCKING FOR STOREFRONT HEADERS BELOW BRICK AT FRONT CANOPIES. METAL FINISH TO MATCH STOREFRONT FINISH - MIDNIGHT BRONZE ANODIZED.
- KNOX BOX - VERIFY INSTALLATION REQUIREMENTS PER LOCAL FIRE DISTRICT IF NEEDED.
- CIRCULAR STOREFRONT WINDOW W/78" INTERIOR DIA. AT ENTRY TOWERS. FINISH TO MATCH TYPICAL STOREFRONT FINISH - MIDNIGHT BRONZE ANODIZED. GLAZING TO BE NON-TINTED, LOW E AS REQUIRED TO MEET ENERGY CODE REQUIREMENTS AS INDICATED IN CODE SUMMARY.
- BRAKE METAL WRAPPED 1/2" PLYWOOD PANELS FLUSH WITH CIRCULAR WINDOW MULLIONS TO MIMIC "HOT NOW" SIGN SHAPE AT ENTRY TOWERS. METAL FINISH TO MATCH STOREFRONT FINISH - MIDNIGHT BRONZE ANODIZED.
- ELECTRICAL PANELS, REFER TO ELECTRICAL SHEETS FOR ADDITIONAL INFORMATION.

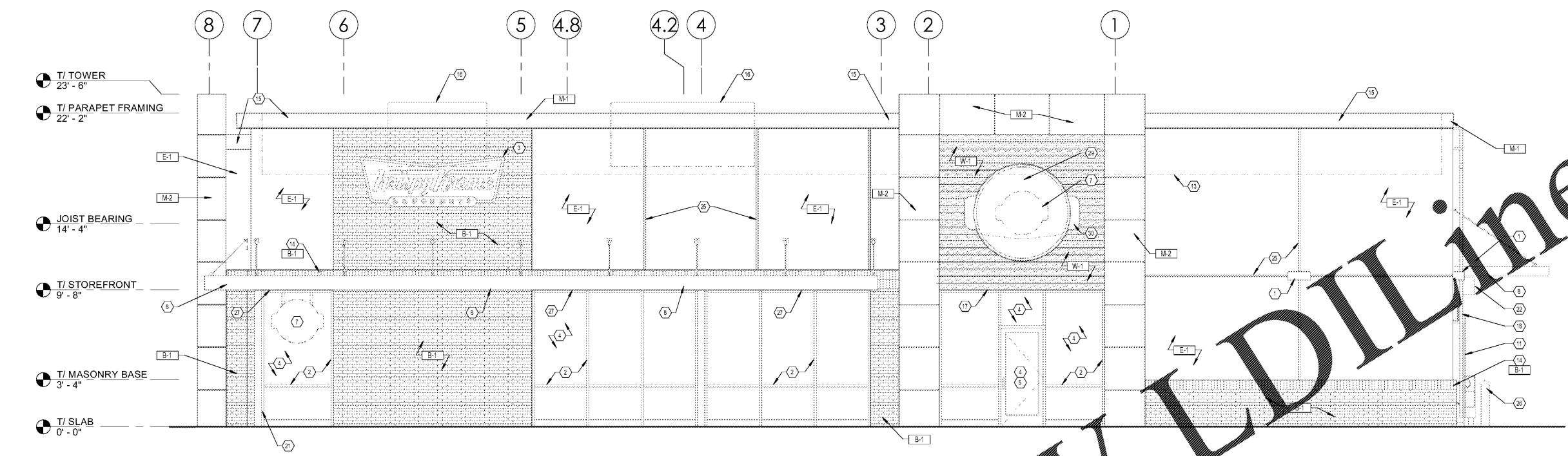
GEORGE SARTY, AIA  
 400 Collins Ave, Suite 415, Fort Lauderdale, FL 33301  
 954.581.1100  
 Copyright © 2019

KRISPY KREME DOUGHNUTS  
 1730 EAST 9 MILE ROAD  
 PENSACOLA, FL 32514

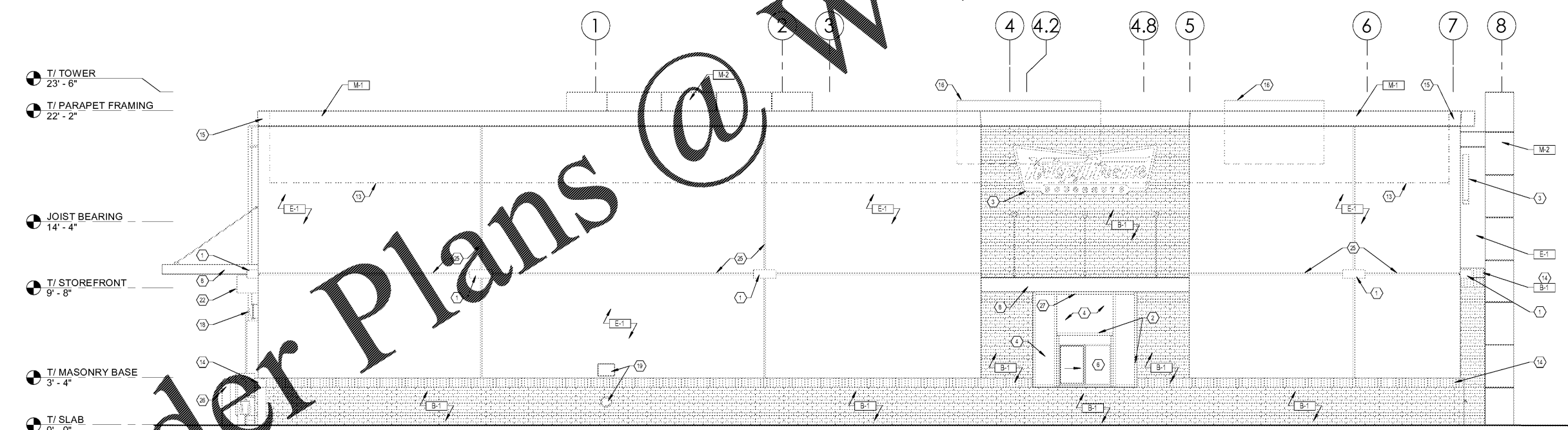


SEAL:	
DATE:	08/23/18
PROJECT NO.:	18-004
CHECKED BY:	JML
DRAWN BY:	DW/DRN/HH
SHEET TITLE:	EXTERIOR ELEVATIONS
SHEET NO.:	

A6.1



1 EAST ELEVATION  
 A6.1 SCALE: 1/4" = 1'-0"



2 WEST ELEVATION  
 A6.1 SCALE: 1/4" = 1'-0"

Order Plans @ [www.LDILine.com](http://www.LDILine.com)