

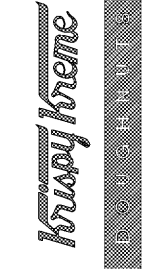
EXTERIOR FINISH SCHEDULE				
ITEM	DESCRIPTION	MANUFACTURER	SPECIFICATION	REMARKS
EIFS				
E-1	EIFS	DRYVIT - OUTSULATION PLUS MD	106 PEARL ASH	EIFS FINISH QUARTZ PUTZ
MASONRY				
B-1	BRICK	PINE HALL BRICK CO	SPEKTRA SCARLET W/C	MORTAR: ARGOS, ARGOS KHAKI
METAL				
M-1	2-PIECE SNAP-ON COMPRESSION EDGING	EXCEPTIONAL METALS	MEDIUM BRONZE	
M-2	ALUMINUM COMPOSITE MATERIAL	ALUCOBOND	RED FIRE	
PAINT				
P-1	PAINT, EXTERIOR	BENJAMIN MOORE	2092-20 SENNA	USE AT EXTERIOR REAR DOORS, DOOR FRAMES, & ELECTRICAL/GAS METERS
WOOD-LOOK PANEL				
W-1	WOOD-LOOK RAINSCREEN PANEL	STONEWOOD ARCHITECTURAL PANELS	STONEWOOD SELECT - CASK OAK	PANEL THICKNESS 5/16" 1"D EXPOSED FASTENER PANEL SYSTEM

GENERAL NOTES

- FOR REFLECTED CEILING PLAN, SEE DWGS A2.0 & A3.0.
 - FOR DOOR & WINDOW SCHEDULE, SEE DWG A18.0.
 - FOR EQUIPMENT, SEE DWG EQ1.0.
 - NEW WALL COVERING GRAPHICS BY OWNER'S VENDOR, G.C. SHALL PREPARE WALLS AS REQUIRED TO A SMOOTH SURFACE AND PRIME PER MANUFACTURER'S SPECIFICATIONS.
- ELEVATION KEYNOTES**
- DECORATIVE EXTERIOR LIGHTS - MOUNT AT 8'-0" TO CENTER OF FIXTURE - REFER TO ELECTRICAL DWGS.
 - STOREFRONT WINDOWS SEE SHEET A14.0 FOR ADDITIONAL INFORMATION.
 - EXTERIOR WALL SIGNAGE PROVIDED BY OWNER'S SIGNAGE VENDOR. GC TO COORDINATE WITH SIGNAGE VENDOR AND PROVIDE ELECTRICAL SUPPLY AND BLOCKING AT SIGN LOCATIONS AS REQUIRED. SEE ELECTRICAL SHEETS FOR J-BOX LOCATION.
 - SAFETY GLAZING PRINTING AND LOW E AS REQUIRED TO MEET ENERGY CODE REQUIREMENTS AS INDICATED IN CODE SUMMARY. EXTERIOR DOOR PER SCHEDULE - SEE SHEET A18.0.
 - DRIVE THRU WINDOW PROVIDED AND INSTALLED BY GC.
 - INTERIOR WINDOW SIGNAGE BY SIGNAGE VENDOR - UNDER SEPARATE CONTRACT AND PERMIT.
 - CANOPY BY SIGNAGE VENDOR - UNDER SEPARATE CONTRACT AND PERMIT. GC TO PROVIDE BLOCKING AS REQUIRED.
 - EXTERIOR HOLLOW METAL DOOR & FRAME PAINT P-1. SEE DOOR SCHEDULE ON SHEET A18.0.
 - EXTERIOR METAL ROLL UP DOOR & FRAME - PREFINISHED. SEE DOOR SCHEDULE ON SHEET A18.0.
 - ELECTRICAL SERVICE EQUIPMENT - COORDINATE EXACT DIMENSIONS WITH MANUFACTURER. GC SHALL PROVIDE CONTINUOUS WEATHER SEALANT ALL AROUND EQUIPMENT AND AT PENETRATIONS INTO BUILDING - PAINT P-1.
 - GAS METER - SEE PLUMBING DRAWINGS - PROVIDE WEATHER SEAL AT PENETRATIONS INTO BUILDING - PAINT P-1.
 - LINE OF ROOF BEYOND
 - SOLDIER COURSE
 - METAL 2-PIECE SNAP ON COMPRESSION EDGE PROVIDED BY G.C. THRU ROOFING CONTRACTOR. G.C. RESPONSIBLE FOR COORDINATION OF CONSTRUCTION SCHEDULE. SEE SHEET A14.0 FOR DETAILS.
 - ROOF TOP EQUIPMENT - SEE MECHANICAL DRAWINGS FOR ADDITIONAL INFORMATION.
 - BOTTOM SIDE OF EIFS SOFFIT SHALL BE E-1.
 - EMERGENCY LIGHT FIXTURE, MOUNT BOTTOM OF FIXTURE AT 8'-0" A.F.F.
 - COW'S TONGUE, GC TO PROVIDE BROWN EXTERIOR GRADE SIGN ABOVE COW'S TONGUE, WITH WHITE ROUTED LETTERS STATING, "IF WATER IS COMING FROM THIS FIXTURE PLEASE NOTIFY MANAGEMENT" - SEE PLUMBING DRAWINGS FOR ADDITIONAL INFORMATION.
 - PROVIDE 180° VIEWER AT DOOR TO STORAGE - SEE DOOR SCHEDULE FOR ADDITIONAL INFORMATION.
 - LADDER TO ROOF WITH HINGED LOCKABLE SECURITY LADDER ACCESS GATE, REFER TO WALL SECTION SA11.0 FOR MORE INFORMATION.
 - EXTERIOR AIR CURTAIN - SEE EQUIPMENT SCHEDULE FOR ADDITIONAL INFORMATION.
 - DOORBELL
 - FROST PROOF HOSE BIB
 - EIFS V-GROOVE, TYP.
 - BOLLARD, TYP. - REFER TO DETAIL 6SP1.1.
 - BRAKE METAL WRAPPING AT BLOCKING FOR STOREFRONT HEADERS BELOW BRICK AT FRONT CANOPIES. METAL FINISH TO MATCH STOREFRONT FINISH - MIDNIGHT BRONZE ANODIZED.
 - KNOX BOX - VERIFY INSTALLATION REQUIREMENTS PER LOCAL FIRE DISTRICT IF NEEDED.
 - CIRCULAR STOREFRONT WINDOW W/78" INTERIOR DIA. AT ENTRY TOWERS. FINISH TO MATCH TYPICAL STOREFRONT FINISH - MIDNIGHT BRONZE ANODIZED. GLAZING TO BE NON-TINTED, LOW-E AS REQUIRED TO MEET ENERGY CODE REQUIREMENTS AS INDICATED IN CODE SUMMARY.
 - BRAKE METAL WRAPPED 1/2" PLYWOOD PANELS FLUSH WITH CIRCULAR WINDOW MULLIONS TO MIMIC "HOT NOW" SIGN SHAPE AT ENTRY TOWERS. METAL FINISH TO MATCH STOREFRONT FINISH - MIDNIGHT BRONZE ANODIZED.
 - ELECTRICAL PANELS, REFER TO ELECTRICAL SHEETS FOR ADDITIONAL INFORMATION.

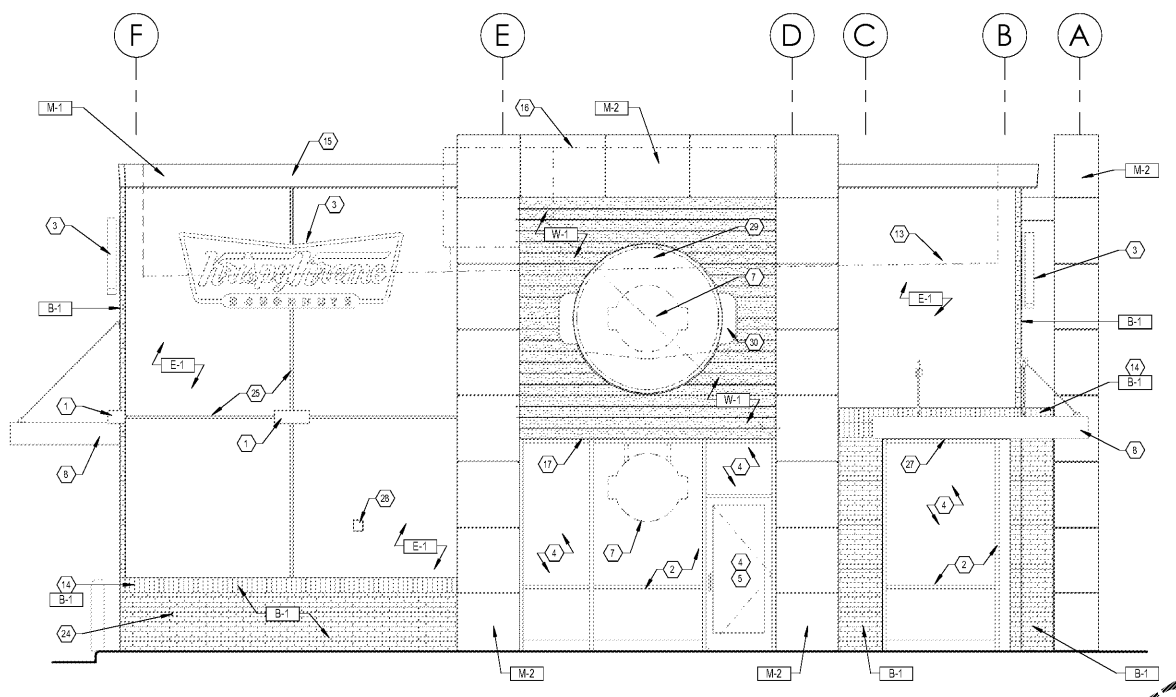
GEORGE SARTY, AIA
 407 241-1111, Suite 415, Fort Myers, FL 33901
 www.georgesarty.com
 Copyright © 2018

KRISPY KREME DOUGHNUTS
 1730 EAST 9 MILE ROAD
 PENSACOLA, FL 32514



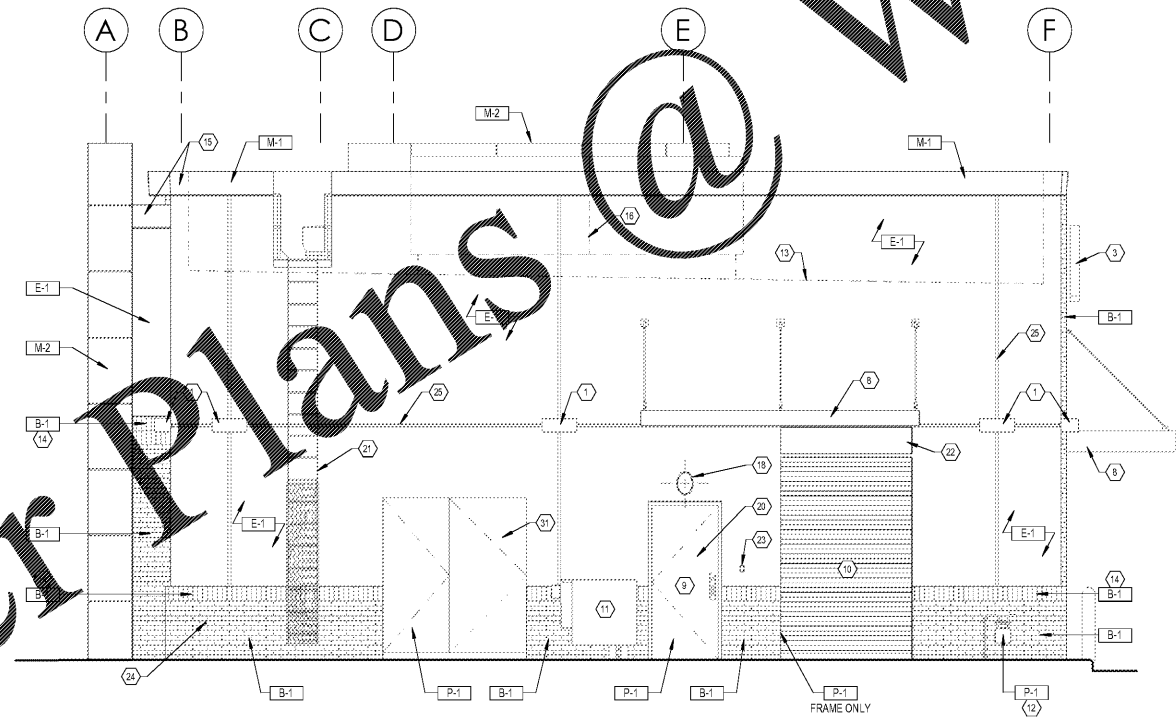
SEAL:
DATE: 08/23/18
PROJECT NO.: 18-004
CHECKED BY: JML
DRAWN BY: DW/DRN/HH
SHEET TITLE: EXTERIOR ELEVATIONS
SHEET NO.:

A6.0



- T/ TOWER 23' - 6"
- T/ PARAPET FRAMING 22' - 2"
- JOIST BEARING 14' - 4"
- T/ STOREFRONT 9' - 8"
- T/ MASONRY BASE 3' - 4"
- T/ SLAB 0' - 0"

1 SOUTH ELEVATION
 SCALE: 1/4" = 1'-0"



- T/ TOWER 23' - 6"
- T/ PARAPET FRAMING 22' - 2"
- JOIST BEARING 14' - 4"
- T/ STOREFRONT 9' - 8"
- T/ MASONRY BASE 3' - 4"
- T/ SLAB 0' - 0"

2 NORTH ELEVATION
 SCALE: 1/4" = 1'-0"

Order Plans @ WWW.LDILine.com