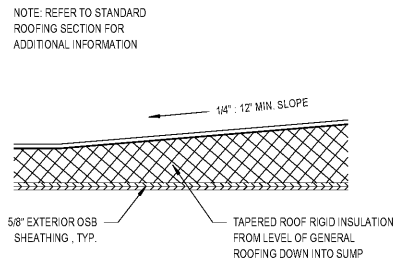
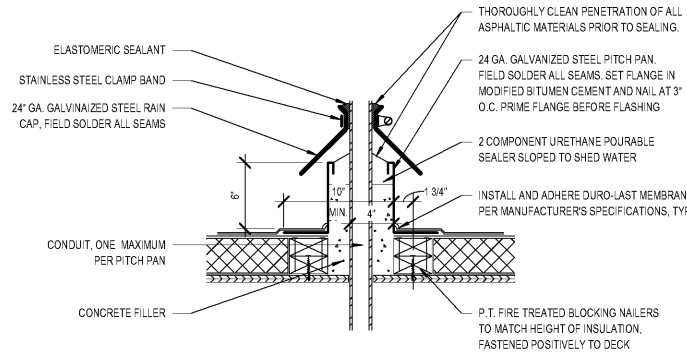


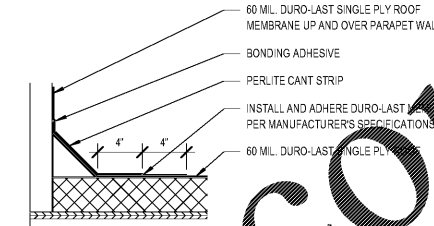
1 STANDARD ROOFING SECTION
A5.1 SCALE: 1 1/2" = 1'-0"



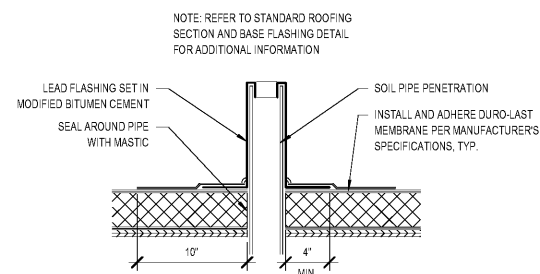
2 TYPICAL CRICKET DETAIL
A5.1 SCALE: 1 1/2" = 1'-0"



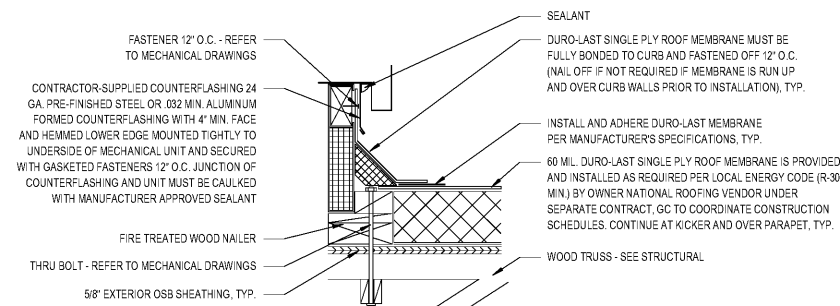
3 PITCH DETAIL
A5.1 SCALE: 1 1/2" = 1'-0"



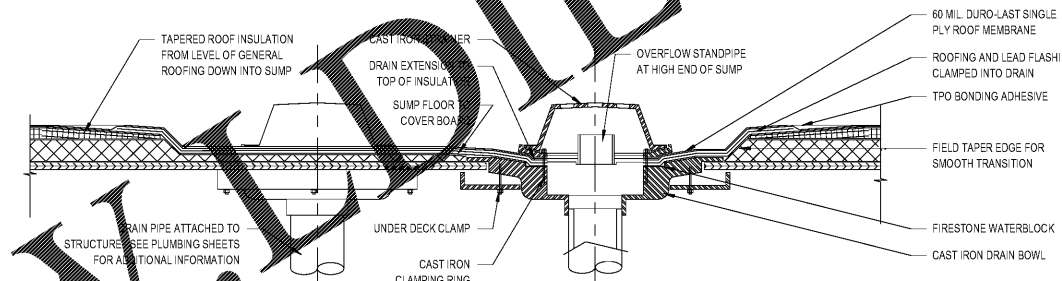
4 STANDARD BASE FLASHING CONFIG.
A5.1 SCALE: 1 1/2" = 1'-0"



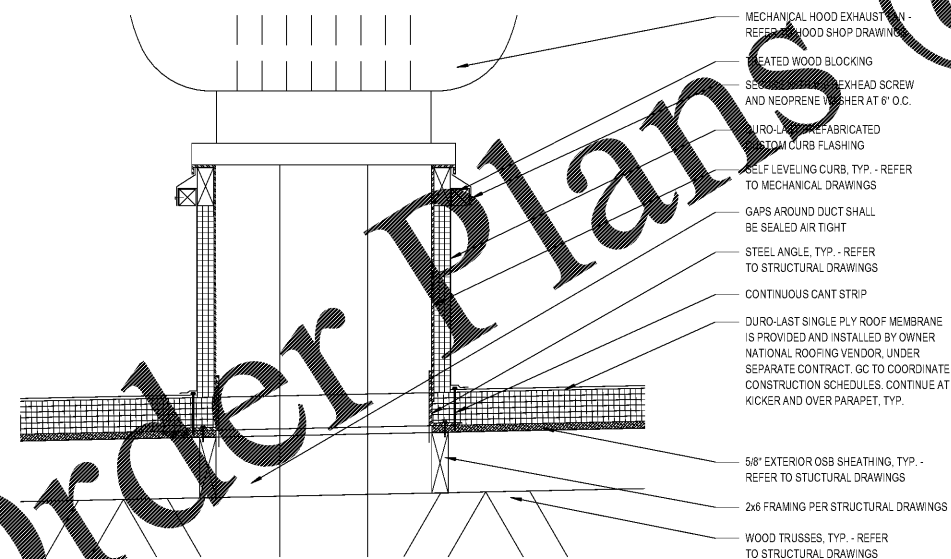
5 TYP. SOIL PIPE FLASHING DETAIL
A5.1 SCALE: 1 1/2" = 1'-0"



6 RTU CURB DETAIL
A5.1 SCALE: 1 1/2" = 1'-0"

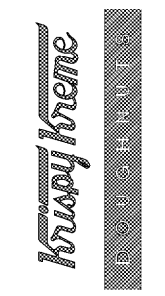


7 ROOF SUMP DETAIL
SCALE: 1 1/2" = 1'-0"



8 DUCT DETAIL
A5.1 SCALE: 1 1/2" = 1'-0"

KRISPY KREME DOUGHNUTS
1730 EAST 9 MILE ROAD
PENSACOLA, FL 32514



DATE:	08/23/18
PROJECT NO.:	18-004
CHECKED BY:	JML
DRAWN BY:	DW/HH
SHEET TITLE:	ROOF DETAILS
SHEET NO.:	

A5.1

GEORGE SARFATTY, AIA
ARCHITECT
10700 N. W. 11th St., Suite 1115, Boca Raton, FL 33433
Tel: 561-995-1100
Copyright © 2018