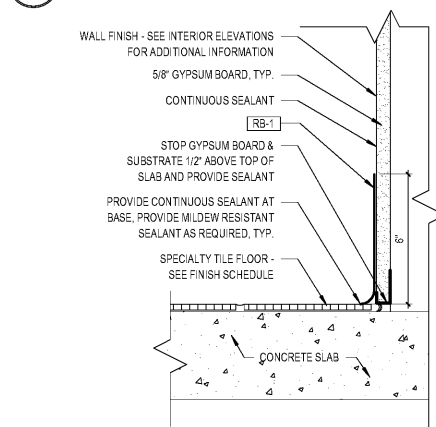
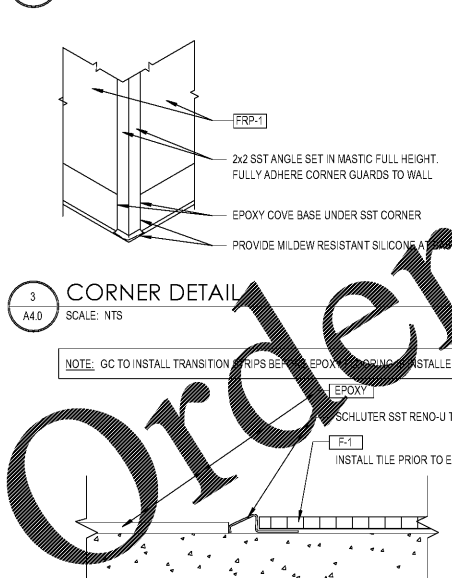


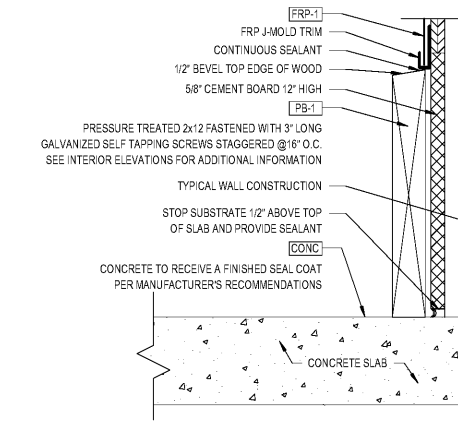
1 FINISH FLOOR PLAN
SCALE: 3/16" = 1'-0"



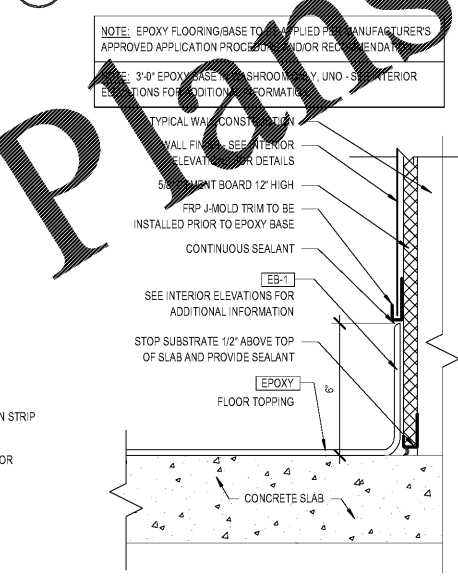
2 BASE DETAIL
SCALE: 3" = 1'-0"



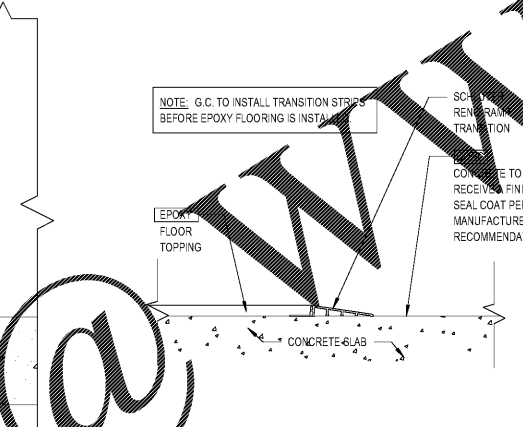
4 EPOXY TO TILE TRANSITION
SCALE: 6" = 1'-0"



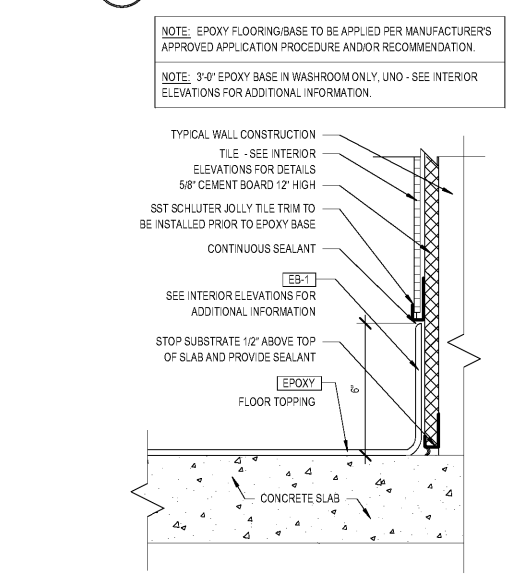
5 STORAGE BASE DETAIL
SCALE: 3" = 1'-0"



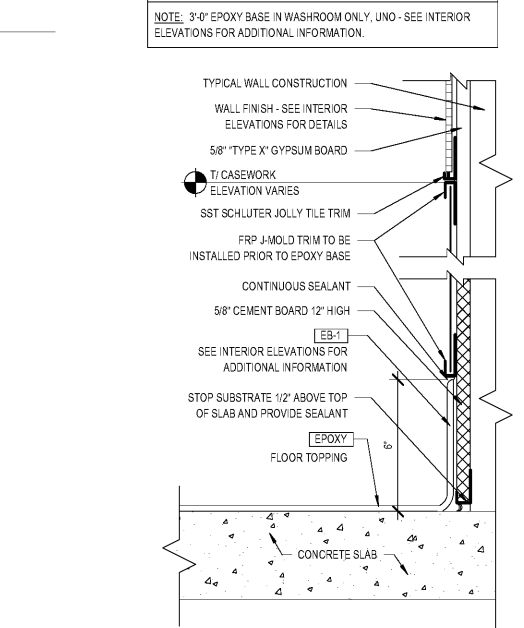
7 EPOXY COVE BASE DETAIL @ FRP-1
SCALE: 3" = 1'-0"



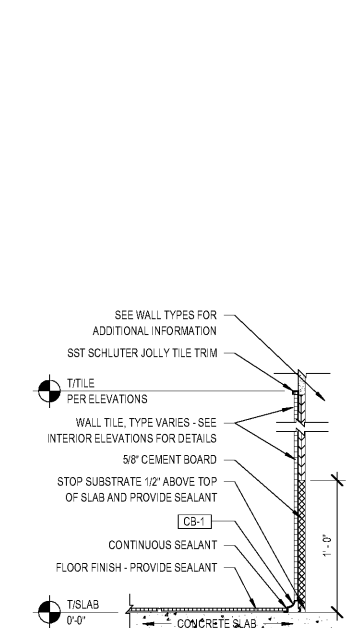
6 EPOXY TO CONCRETE TRANSITION
SCALE: 6" = 1'-0"



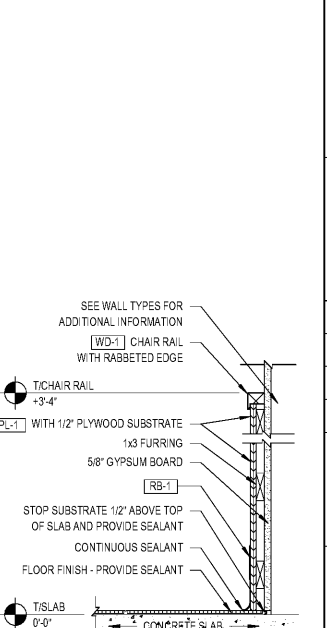
8 EPOXY COVE BASE DETAIL @ WALL TILE
SCALE: 3" = 1'-0"



9 EPOXY BASE TO FRP TO TILE DETAIL
SCALE: 3" = 1'-0"



10 TILE WAINSCOT
SCALE: 1 1/2" = 1'-0"



11 P-LAM WAINSCOT
SCALE: 1 1/2" = 1'-0"

INTERIOR FINISH SCHEDULE				
ITEM	DESCRIPTION	MANUFACTURER	SPECIFICATION	REMARKS
BASE				
CB-1	STAINLESS STEEL COVE BASE	SCHLUTER SYSTEMS	DILEX-EHK, STAINLESS FINISH	CONTINUOUS
EB-1	EPOXY BASE	RUST-OLEUM	R200 OVERKOTE C9	COLOR: MATCH BM HC-86 KINGSPOINT GRAY
PB-1	PRESSURE TREATED WOOD BASE	BY GC	2X12	TAPERED TOP, PAINT W/ PT-1
RB-1	RUBBER COVE BASE	JOHNSONITE	RWDC 63 BURNT UMBER, 6" ROLLED	6" ROLLED BURNT UMBER
CEILING				
ACT-1	2X2 CEILING TILE	ARMSTRONG	5/8" ANGLED TEGULAR, COLOR: ADDBE	ARMSTRONG FINE FISSURED, MATCHING GRID
ACT-2	2X4 CEILING TILE	GRDSTONE	GYPSSUM CEILING PANELS W/ VINYL LAMINATE, COLOR: WHITE	WASHABLE, SCRUBABLE VINYL ALUMINUM GRID W/ NO REVEAL
FLOOR				
CONC	CONCRETE	SILCOX	TEK 8505 TDS	TWO COATS
EPOXY	EPOXY	RUST-OLEUM	OVERKOTE XTRA E-100	COLOR: MATCH BM HC-86 KINGSPOINT GRAY
F-1	CERAMIC TILE	DALTILE - SADDLE BROOKE	SD15 WALNUT CREEK 6'X36"	STAGGERED PATTERN, NOT TO EXCEED 33% OVERLAP
F-2	CERAMIC TILE	DALTILE - SADDLE BROOKE	SD14 FARMHOUSE, 6'X36"	STAGGERED PATTERN, NOT TO EXCEED 33% OVERLAP
PLASTIC LAMINATE				
PL-1	LAMINATE	FORMICA	6402-58 THERMO WALNUT, FINISH: MATTE	
PL-2	LAMINATE	FORMICA	5887-NT MILLENIUM CHOCOLATE, FINISH: NATURELLE	
WALLS				
FRP-1	FIBERGLASS REINFORCED PANEL	MARLITE	P140 IVORY	
GT-1	GROUT	LATICRETE	ANTIQUE MOCHA	GROUT FOR F-1 AND WT-4
GT-2	GROUT	LATICRETE	ANTIQUE WHITE	GROUT FOR WT-2 & WT-3
GT-3	GROUT	LATICRETE	#55 SPORT KHAKI	GROUT FOR F-2
PT-1	PAINT	BENJAMIN MOORE	654 SPARKLING ASPEN	SATIN ON CEILING AND WALLS, SEMI-GLOSS ON TRIM
PT-2	PAINT	BENJAMIN MOORE	2143-40 CAMOUFLAGE	SATIN ON CEILING AND WALL
PT-3	PAINT	BENJAMIN MOORE	2142-40 DRY SAGE	SATIN ON WALLS
PT-4	PAINT	BENJAMIN MOORE	2108-20 SIERRA SPRUCE	SATIN ON WALLS
PT-5	PAINT	BENJAMIN MOORE	PM-18 HERITAGE RED	SATIN ON CEILING AND WALL
PT-6	PAINT	BENJAMIN MOORE	510 SPRINGFIELD SAGE	SATIN ON WALLS
PT-7	PAINT	BENJAMIN MOORE	OC-65 CHANTILLY LACE	SATIN ON WALLS
SS-1	CORNER	DUPONT - CORIAN	SERENE SAGE	INSTALLED ON CABINETRY
SS-2	SOLID SURFACE	FORMICA	CUSTOM-FRED'S RED #606, 96" X 144", 1/2" THICK	FRAME AROUND VIEWING WINDOW WALL AND BANQUETTE. NOTE: CUSTOM COLOR IN STOCK AT FORMICA - USE CONTACT ON T1.
ST-1	STAINWOOD DOORS	VT INDUSTRIES	RAVINE RAD7 (STAIN)	NATURAL BIRCH WOOD DOOR
WD-1	WOOD STAINED		2X2 WOOD (1 1/2" X 1 1/2")	SATIN TO MATCH PL-1
WT-2	WALL TILE	DALTILE	MODERN DIMENSIONS, MATTE BISCUIT, 4-1/4" X 12-7/8"	INSTALLED HORIZONTALLY, BRICK PATTERN, STAGGERED 50%. GROUT: GT-2
WT-3	WALL TILE	DALTILE	ELEVARE, CRATER EL41, 4" X 16"	INSTALLED HORIZONTALLY, BRICK PATTERN, STAGGERED 50%. GROUT: GT-2
WT-4	WALL TILE	DALTILE	ELEVARE, CACAO EL45, 4" X 16"	INSTALLED HORIZONTALLY, STAGGERED PATTERN, STAGGERED 33%. GROUT: GT-1

- GENERAL NOTES**
- DO NOT SCALE DRAWINGS. REFER TO NOTED DIMENSIONS ON PLANS.
 - REFER TO SPECIFICATIONS FOR PRODUCT DATA.
 - ALL FINISHED MATERIALS SHALL BE INSTALLED AND CLEANED PER MANUFACTURER'S SPECIFICATIONS.
 - ALL FINISHES AT STOREFRONT WILL TURN CORNER AND RETURN TO STOREFRONT.
 - G.C. TO PROVIDE GROUT SEALANT FLOOR & BASE TILE PER SPECIFICATIONS.
 - KRISPY KREME NATIONAL VENDOR ACCOUNTS ARE AVAILABLE FOR CERTAIN FINISH SPECIFICATIONS - CONTACT REPRESENTATIVES ON SHEET T1.1 FOR PRODUCT ORDERING AND SUPPLY LOCATIONS.
- FINISH PLAN KEYNOTE**
- FLOOR DRAIN & SLOPE CONCRETE SLAB 1/8" PER FOOT - SEE PLUMBING DRAWINGS
 - TRENCH DRAIN CONCRETE SLAB 1/8" PER FOOT - SEE PLUMBING DRAWINGS
 - LIMIT EPOXY FLOOR FINISH
 - CLEANOUT - SEE PLUMBING SHEETS FOR ADDITIONAL INFORMATION
 - SALES CABINETS WITH RB-1 BASE ON ALL SIDES - SEE EQUIPMENT SHEETS FOR ADDITIONAL INFORMATION AND LOCATIONS
 - FLOOR DRAIN - SEE PLUMBING DRAWINGS
 - PRE-FAB MOP SINK - RUN EPOXY BASE UP SIDES - INSTALL PRIOR TO FLOOR INSTALLATION
 - THRESHOLD - SEE DETAILS PER DOOR TYPE ON SHEET A18.0
 - CONCRETE FLOOR TO BE CLEANED AND PREPARED AS REQUIRED TO RECEIVE A FINISHED SEAL COAT PER MANUFACTURER'S RECOMMENDATIONS
 - PROVIDE SCHLUTER-RENO-RAMP TRANSITION STRIP FROM EPOXY TO CONCRETE
 - HUB DRAIN - SEE PLUMBING SHEETS
 - WATER SERVICE - SEE CIVIL & PLUMBING SHEETS FOR ADDITIONAL INFORMATION
 - STAINLESS STEEL CORNER GUARDS PROVIDED AND INSTALLED BY GC - SEE DETAIL 3A4.0
 - ELECTRICAL STUB-UP THRU CONCRETE SLAB TO CABINETRY EQUIPMENT - REFER TO EQUIPMENT SHEETS AND ELECTRICAL DRAWINGS
 - NO BASE INSTALLED AT NEW 'BUILD-OUT' LOCATIONS - RUN FINISHES TO THE FLOOR TILE AND PROVIDE CONTINUOUS SEALANT
 - START OF FULL TILE
 - WATER STUB-UP - REFER TO PLUMBING SHEETS
 - ELECTRICAL STUB - REFER TO ELECTRICAL SHEETS
 - NO FINISHES THIS SIDE OF WALL
 - EQUIPMENT RAILS TO BE PROVIDED AND INSTALLED BY KRISPY KREME EQUIPMENT DEPARTMENT. FLOOR FINISH MUST BE PERFECTLY LEVEL WITHIN 6" OF ALL DIRECTIONS OF TRACKS.
 - FLOOR SINK - REFER TO PLUMBING DRAWINGS

GEORGE SARFATTY, AIA
 407-201-1100, george@www.kryk.com
 Copyright © 2018

KRISPY KREME DOUGHNUTS
 1730 EAST 9 MILE ROAD
 PENSACOLA, FL 32514

SEAL: _____
 DATE: 08/23/18
 PROJECT NO.: 18-004
 CHECKED BY: JML
 DRAWN BY: DW/DRN/HH
 SHEET TITLE: FINISH FLOOR PLAN & SCHEDULE
 SHEET NO.: _____

A4.0

Order Plans