

GENERAL NOTES

- DO NOT SCALE DRAWINGS. REFER TO NOTED DIMENSIONS ON PLANS.
- REFER TO ELECTRICAL SHEETS FOR LIGHTING SCHEDULE. ALL ELEVATION REFERENCES INDICATED ON THIS PLAN ARE TO FRAMING, U.N.O.
- REFER TO MECHANICAL PLAN FOR EXHAUST HOOD DETAILS. FINAL HOOD LOCATION & CONFIGURATION SHALL BE PER HOOD MANUFACTURER / SUBCONTRACTOR / INSTALLER. CEILING HEIGHTS ARE FROM TOP OF SLAB FLOOR.

RCP NOTES

- CONTRACTOR SHALL VERIFY FIXTURE LOCATIONS, MAKE PROPER ADJUSTMENTS FOR ANY CHANGES IN PLAN. REFER TO ADDITIONAL INFORMATION FOR LOCAL CODES, ETC.
- FOR V.A.C. PLAN, SECTION LOCATIONS, SUPPLY & RETURN AIR GRILLE SIZES, SEE MECHANICAL SHEETS.
- ALL FIXTURES SHALL BE LOCATED IN CENTER OF CEILING TILES. REFER TO MECHANICAL SHEETS FOR LIGHTING LAY-OUT REQUIREMENTS & FIXTURE SPECIFICATIONS.
- CEILING GRID SHALL BE SUPPORTED FROM STRUCTURAL MEMBERS ONLY. GRID SHALL NOT BE SUPPORTED FROM OTHER TRADES' WORK.
- HANGER WIRES FOR GRID SHALL BE INSTALLED AT NOT MORE THAN 48" O.C. & AT EACH CORNER OF LAY-IN LIGHT FIXTURES. SEE ELECTRICAL PLANS FOR FIXTURE LOCATIONS.
- FOR DIMENSIONED LIGHTING PLAN, REFER TO SHEET A3.0. FOR LIGHTING COORDINATION WITH EQUIPMENT, REFER TO SHEET E01.0. FOR ELECTRICAL LIGHTING PLAN & LUMINAIRE SCHEDULE, REFER TO SHEET E3.
- REFER TO SHEET E02.0 FOR EQUIPMENT SCHEDULES.

RCP KEYNOTES

- WOOD STUD HEADER, BOTTOM OF HEADER FRAMING PER PLAN. SEE DETAILS ON THIS SHEET.
- WOOD STUD FRAMING BULKHEAD, BOTTOM OF HEADER FRAMING PER PLAN. BOTTOM OF HEADER TO HAVE STAINLESS STEEL CAP.
- SAND/PREPARE GRID, HVAC SUPPLY & RETURN DIFFUSERS, AND PAINT TO MATCH CEILING GRID IN DINING AREA ONLY.
- GYPSUM BOARD SOFFIT AT SERVICE AREA COUNTER - SEE DETAILS ON THIS SHEET.
- STANDARD MENUS/BOARDS - SEE SOFFIT ELEVATIONS.
- ROOF DRAIN - REFER TO PLUMBING SHEETS.
- ELECTRICAL DROPDOWNS - SEE ELECTRICAL SHEETS FOR EXACT LOCATION AND ELECTRICAL EQUIPMENT SCHEDULE.
- LINE OF HOOD - REFER TO MECHANICAL SHEETS.
- INTERIOR WINDOW SIGNAGE - REFER TO SHEET A18.0 FOR ADDITIONAL INFORMATION.
- CANOPY, PROVIDED AND INSTALLED BY NATIONAL SIGNAGE VENDOR - SEE WALL SECTIONS FOR REQUIRED BLOCKING.
- EXTERIOR DECORATIVE LIGHT FIXTURE - SEE ELECTRICAL SHEETS.
- LADDER TO ROOF - SEE DETAIL 9A.1
- ENTRY TOWER SOFFIT - SEE WALL SECTIONS AND STRUCTURAL SHEETS FOR ADDITIONAL INFORMATION.
- OPEN TO STRUCTURE ABOVE. ALL UTILITIES MUST BE RUN ABOVE BOTTOM CHORD OF BAR JOIST AND LOOK CLEAN. PAINT EXPOSED STRUCTURE, UTILITIES AND ROOF DECK PT-2.
- AIR CURTAIN - SEE EQUIPMENT AND ELECTRICAL SHEETS FOR ADDITIONAL INFORMATION.
- CENTER CEILING GRID IN SPACE.
- CANOPY WITH INTEGRATED LIGHTING, PROVIDED AND INSTALLED BY SIGNAGE VENDOR - SEE WALL SECTIONS FOR REQUIRED BLOCKING. COORDINATE ANY ELECTRICAL REQUIREMENTS WITH SIGNAGE VENDOR.
- WALL-MOUNTED EXTERIOR SIGNAGE - REFER TO EXTERIOR ELEVATIONS FOR ADDITIONAL INFORMATION.
- WOOD-LOOK RAINSCREEN ABOVE ENTRY SOFFIT, REFER TO EXTERIOR ELEVATIONS AND WALL SECTIONS FOR ADDITIONAL INFORMATION.
- SECURITY LIGHT FIXTURE - SEE EXTERIOR ELEVATIONS & ELECTRICAL SHEETS FOR ADDITIONAL INFORMATION.
- WALL MOUNTED INTERIOR WINDOW SIGNAGE IN TOWER ELEMENT (ABOVE) - SEE EXTERIOR ELEVATIONS & WALL SECTIONS FOR ADDITIONAL INFORMATION.

KRISPY KREME DOUGHNUTS
 1730 EAST 9 MILE ROAD
 PENSACOLA, FL 32514



SEAL:

DATE: 08/23/18

PROJECT NO.: 18-004

CHECKED BY: JML

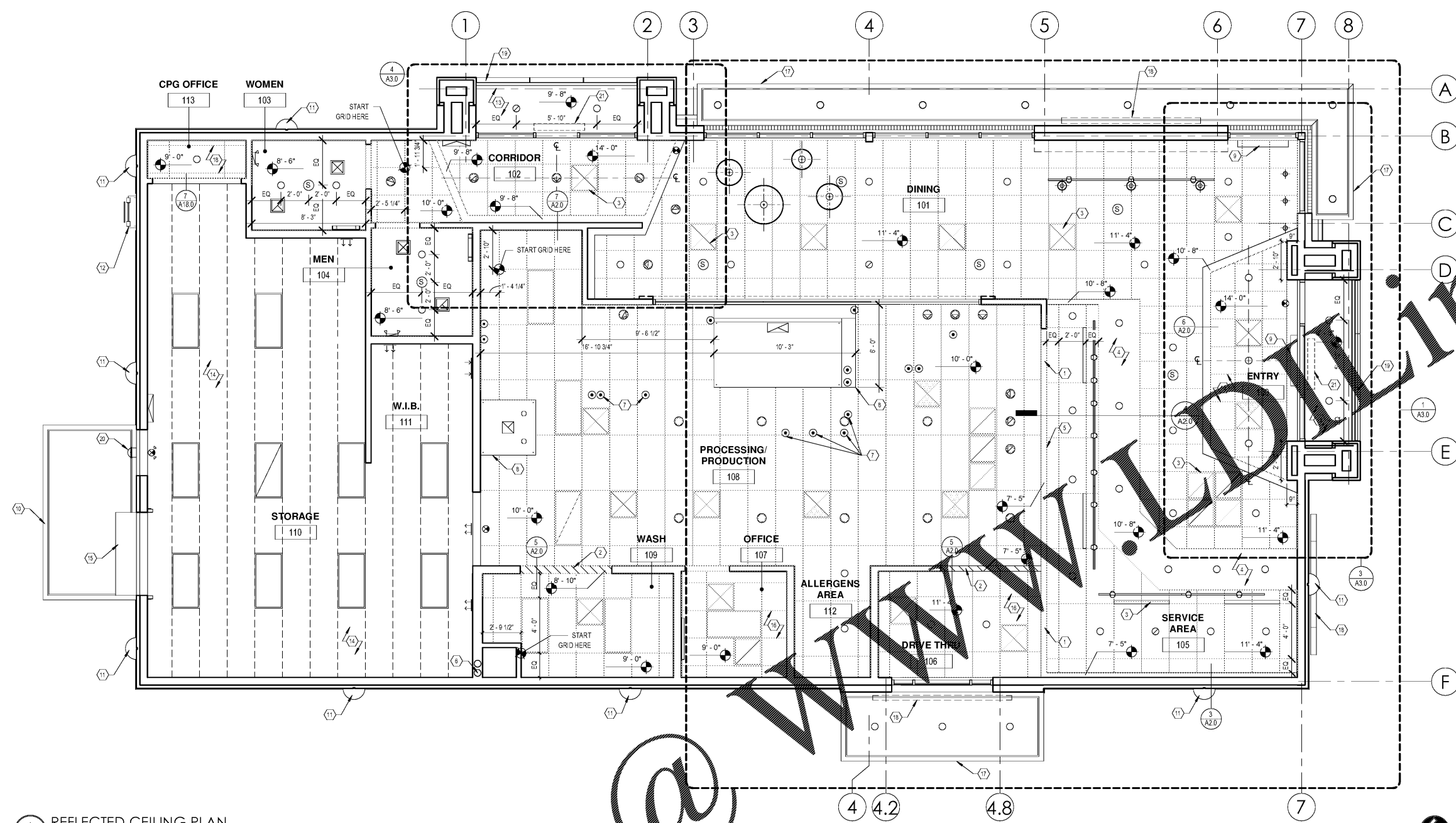
DRAWN BY: DW/DRN/H

SHEET TITLE:

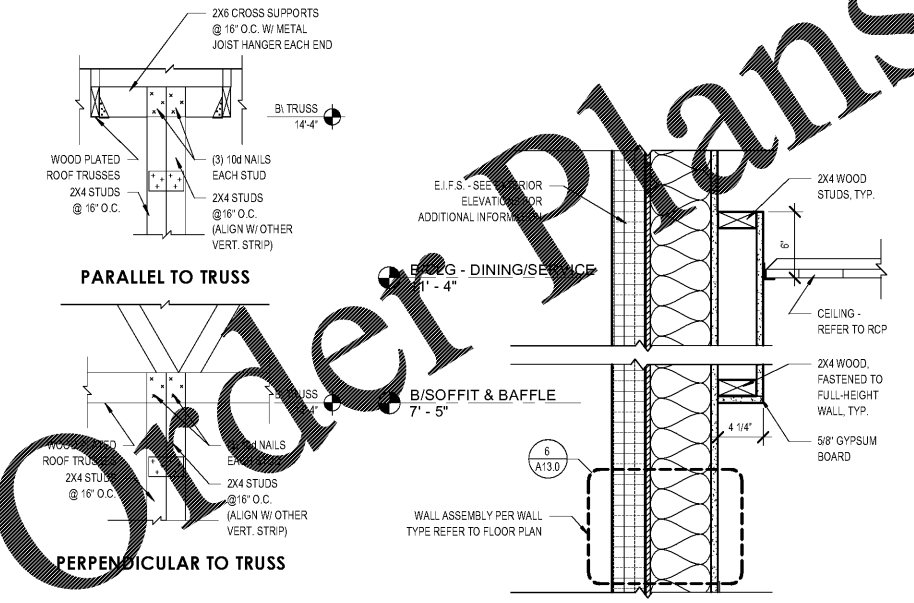
REFLECTED CEILING PLAN

SHEET NO.:

A2.0

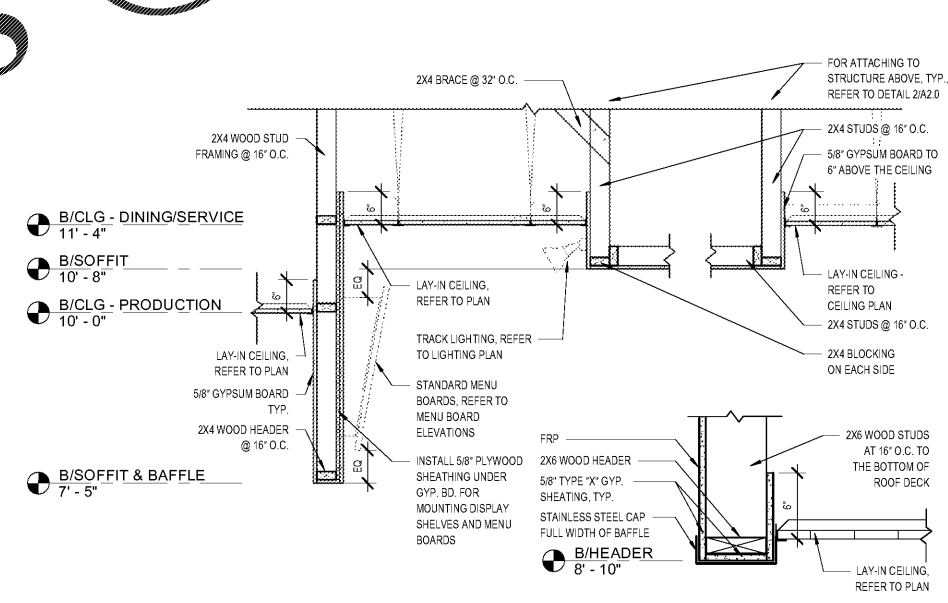


1 REFLECTED CEILING PLAN
 A2.0 SCALE: 1/4" = 1'-0"



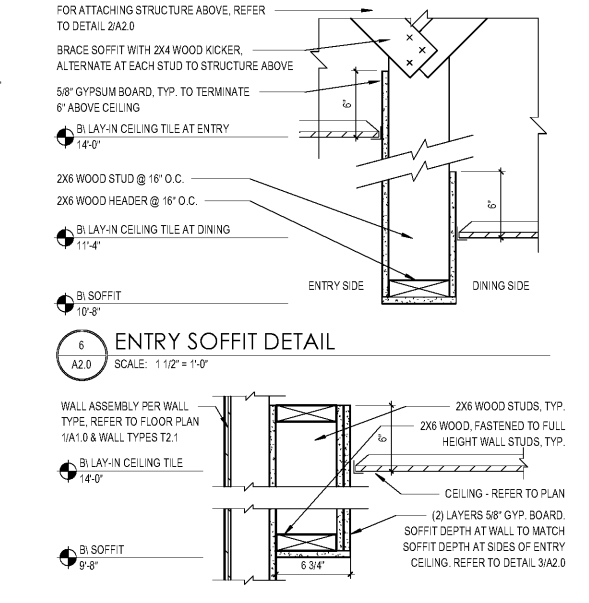
2 SOFFIT SUPPORT DETAIL
 A2.0 SCALE: 3/4" = 1'-0"

3 WALL BAFFLE DETAIL
 A2.0 SCALE: 1 1/2" = 1'-0"



4 FRONT COUNTER SOFFIT DETAIL
 A2.0 SCALE: 3/4" = 1'-0"

5 HEADER DETAIL
 A2.0 SCALE: 1 1/2" = 1'-0"



7 ENTRY WALL SOFFIT DETAIL
 A2.0 SCALE: 1 1/2" = 1'-0"

Order Plans

WWW.DLINE.com

GEORGE SARFATTY, AIA
 600 Collins Ave., Suite 915, Pompano Beach, FL 33062
 Phone: 954.781.1100
 Copyright © 2018