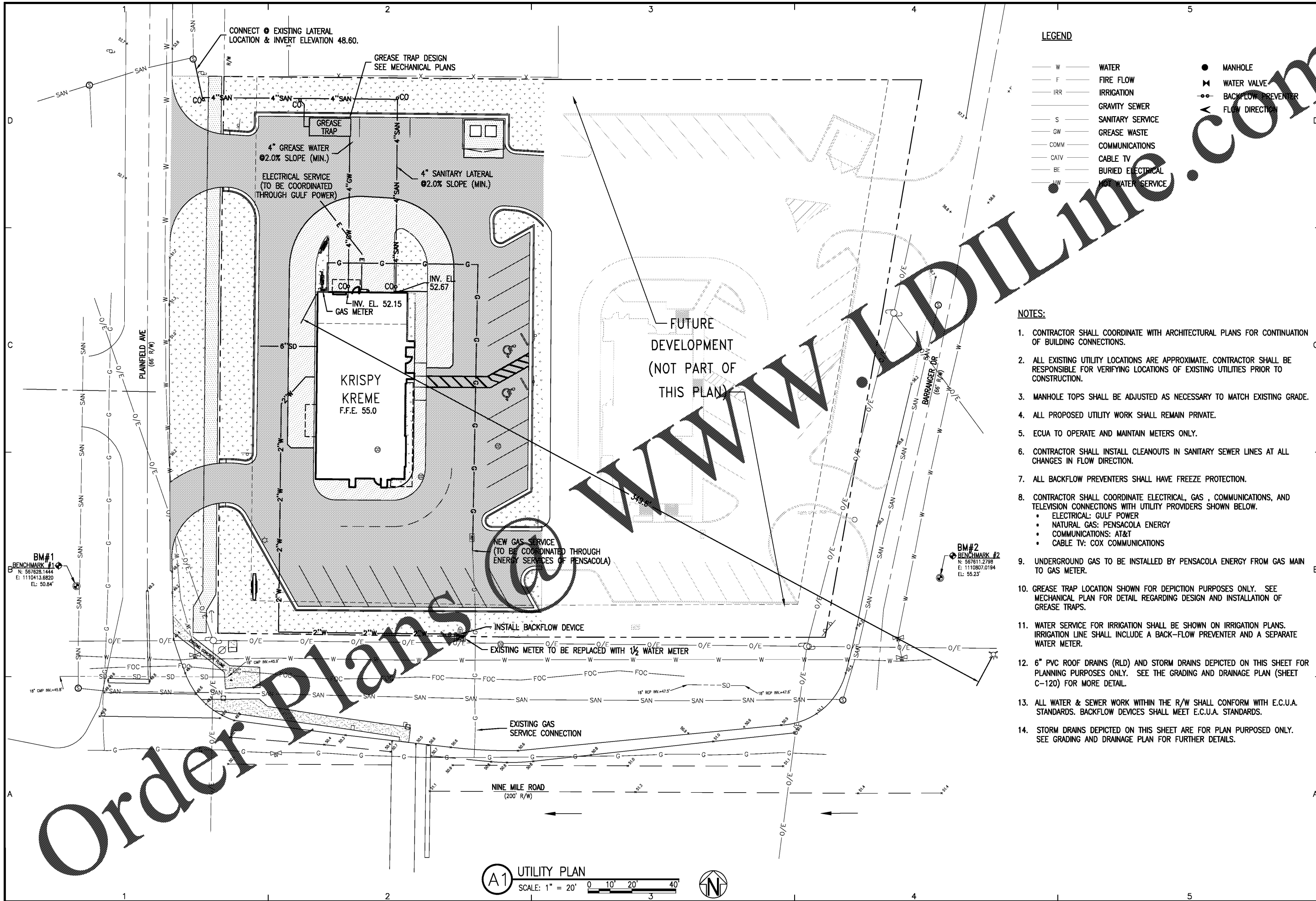


K:\1174 Delaney Projects\117401.01 Nine Mile Road\DWG\C-100.dwg, Aug 06, 2018 - 1:19:02PM, toverton



LEGEND

— W —	WATER	●	MANHOLE
— F —	FIRE FLOW	⊗	WATER VALVE
— IRR —	IRRIGATION	⊕	BACKFLOW PREVENTER
— G.S. —	GRAVITY SEWER	→	FLOW DIRECTION
— S —	SANITARY SERVICE		
— GW —	GREASE WASTE		
— COMM —	COMMUNICATIONS		
— CATV —	CABLE TV		
— BE —	BURIED ELECTRICAL		
— LW —	LOW WATER SERVICE		

- NOTES:**
- CONTRACTOR SHALL COORDINATE WITH ARCHITECTURAL PLANS FOR CONTINUATION OF BUILDING CONNECTIONS.
 - ALL EXISTING UTILITY LOCATIONS ARE APPROXIMATE. CONTRACTOR SHALL BE RESPONSIBLE FOR VERIFYING LOCATIONS OF EXISTING UTILITIES PRIOR TO CONSTRUCTION.
 - MANHOLE TOPS SHALL BE ADJUSTED AS NECESSARY TO MATCH EXISTING GRADE.
 - ALL PROPOSED UTILITY WORK SHALL REMAIN PRIVATE.
 - ECUA TO OPERATE AND MAINTAIN METERS ONLY.
 - CONTRACTOR SHALL INSTALL CLEANOUTS IN SANITARY SEWER LINES AT ALL CHANGES IN FLOW DIRECTION.
 - ALL BACKFLOW PREVENTERS SHALL HAVE FREEZE PROTECTION.
 - CONTRACTOR SHALL COORDINATE ELECTRICAL, GAS, COMMUNICATIONS, AND TELEVISION CONNECTIONS WITH UTILITY PROVIDERS SHOWN BELOW.
 - ELECTRICAL: GULF POWER
 - NATURAL GAS: PENSACOLA ENERGY
 - COMMUNICATIONS: AT&T
 - CABLE TV: COX COMMUNICATIONS
 - UNDERGROUND GAS TO BE INSTALLED BY PENSACOLA ENERGY FROM GAS MAIN TO GAS METER.
 - GREASE TRAP LOCATION SHOWN FOR DEPICTION PURPOSES ONLY. SEE MECHANICAL PLAN FOR DETAIL REGARDING DESIGN AND INSTALLATION OF GREASE TRAPS.
 - WATER SERVICE FOR IRRIGATION SHALL BE SHOWN ON IRRIGATION PLANS. IRRIGATION LINE SHALL INCLUDE A BACK-FLOW PREVENTER AND A SEPARATE WATER METER.
 - 6" PVC ROOF DRAINS (RLD) AND STORM DRAINS DEPICTED ON THIS SHEET FOR PLANNING PURPOSES ONLY. SEE THE GRADING AND DRAINAGE PLAN (SHEET C-120) FOR MORE DETAIL.
 - ALL WATER & SEWER WORK WITHIN THE R/W SHALL CONFORM WITH E.C.U.A. STANDARDS. BACKFLOW DEVICES SHALL MEET E.C.U.A. STANDARDS.
 - STORM DRAINS DEPICTED ON THIS SHEET ARE FOR PLAN PURPOSED ONLY. SEE GRADING AND DRAINAGE PLAN FOR FURTHER DETAILS.

A1 UTILITY PLAN
SCALE: 1" = 20'



BASKERVILLE-DONOVAN, INC.
Innovative Infrastructure Solutions
449 W. MAIN ST., PENSACOLA, FL 32502 (850) 396-9861
ENGINEERING BUSINESS: EB-000340
Pensacola - Panama City Beach - Tallahassee - Mobile - Brentwood County - Tampa
This drawing is the property of BASKERVILLE-DONOVAN, INC. and is not to be reproduced in whole or in part. It is not to be used on any other project and it is to be returned upon request.

KEITH P. GUTHRIE, P.E.
FL Reg. Engineer #79505

KRISPY KREME
1730 E. NINE MILE ROAD

NO.	DATE	APPR.	REVISION/ACTION TAKEN

PROJECT NO: 117401.01
DESIGNED BY: DKH
DRAWN BY: CAD
CHK'D BY: DKH
PROJ. MGR: DKH
DATE: JULY 2018
NOT RELEASED FOR CONSTRUCTION BY: _____ DATE: _____

UTILITY PLAN

C-105