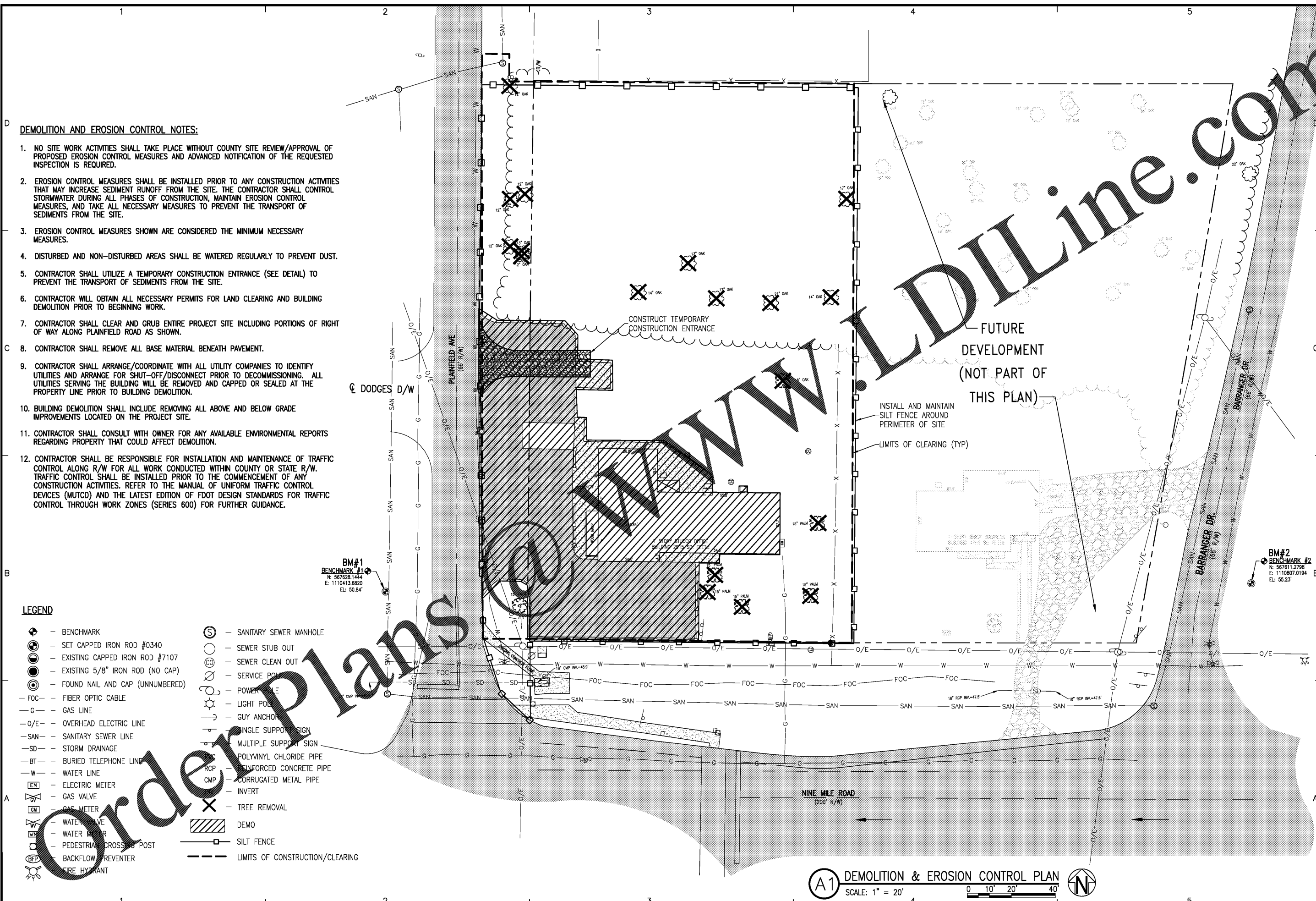


K:\1174 Delcney Projects\117401.01 Nine Mile Road\DWG\C-101-106.dwg, Aug 10, 2018 - 9:17:25AM, toverton



DEMOLITION AND EROSION CONTROL NOTES:

- NO SITE WORK ACTIVITIES SHALL TAKE PLACE WITHOUT COUNTY SITE REVIEW/APPROVAL OF PROPOSED EROSION CONTROL MEASURES AND ADVANCED NOTIFICATION OF THE REQUESTED INSPECTION IS REQUIRED.
- EROSION CONTROL MEASURES SHALL BE INSTALLED PRIOR TO ANY CONSTRUCTION ACTIVITIES THAT MAY INCREASE SEDIMENT RUNOFF FROM THE SITE. THE CONTRACTOR SHALL CONTROL STORMWATER DURING ALL PHASES OF CONSTRUCTION, MAINTAIN EROSION CONTROL MEASURES, AND TAKE ALL NECESSARY MEASURES TO PREVENT THE TRANSPORT OF SEDIMENTS FROM THE SITE.
- EROSION CONTROL MEASURES SHOWN ARE CONSIDERED THE MINIMUM NECESSARY MEASURES.
- DISTURBED AND NON-DISTURBED AREAS SHALL BE WATERED REGULARLY TO PREVENT DUST.
- CONTRACTOR SHALL UTILIZE A TEMPORARY CONSTRUCTION ENTRANCE (SEE DETAIL) TO PREVENT THE TRANSPORT OF SEDIMENTS FROM THE SITE.
- CONTRACTOR WILL OBTAIN ALL NECESSARY PERMITS FOR LAND CLEARING AND BUILDING DEMOLITION PRIOR TO BEGINNING WORK.
- CONTRACTOR SHALL CLEAR AND GRUB ENTIRE PROJECT SITE INCLUDING PORTIONS OF RIGHT OF WAY ALONG PLAINFIELD ROAD AS SHOWN.
- CONTRACTOR SHALL REMOVE ALL BASE MATERIAL BENEATH PAVEMENT.
- CONTRACTOR SHALL ARRANGE/COORDINATE WITH ALL UTILITY COMPANIES TO IDENTIFY UTILITIES AND ARRANGE FOR SHUT-OFF/DISCONNECT PRIOR TO DECOMMISSIONING. ALL UTILITIES SERVING THE BUILDING WILL BE REMOVED AND CAPPED OR SEALED AT THE PROPERTY LINE PRIOR TO BUILDING DEMOLITION.
- BUILDING DEMOLITION SHALL INCLUDE REMOVING ALL ABOVE AND BELOW GRADE IMPROVEMENTS LOCATED ON THE PROJECT SITE.
- CONTRACTOR SHALL CONSULT WITH OWNER FOR ANY AVAILABLE ENVIRONMENTAL REPORTS REGARDING PROPERTY THAT COULD AFFECT DEMOLITION.
- CONTRACTOR SHALL BE RESPONSIBLE FOR INSTALLATION AND MAINTENANCE OF TRAFFIC CONTROL ALONG R/W FOR ALL WORK CONDUCTED WITHIN COUNTY OR STATE R/W. TRAFFIC CONTROL SHALL BE INSTALLED PRIOR TO THE COMMENCEMENT OF ANY CONSTRUCTION ACTIVITIES. REFER TO THE MANUAL OF UNIFORM TRAFFIC CONTROL DEVICES (MUTCD) AND THE LATEST EDITION OF FOOT DESIGN STANDARDS FOR TRAFFIC CONTROL THROUGH WORK ZONES (SERIES 600) FOR FURTHER GUIDANCE.

LEGEND

- ⊕ - BENCHMARK
- ⊙ - SET CAPPED IRON ROD #0340
- ⊙ - EXISTING CAPPED IRON ROD #7107
- ⊙ - EXISTING 5/8" IRON ROD (NO CAP)
- ⊙ - FOUND NAIL AND CAP (UNNUMBERED)
- FOC - FIBER OPTIC CABLE
- G - GAS LINE
- O/E - OVERHEAD ELECTRIC LINE
- SAN - SANITARY SEWER LINE
- SD - STORM DRAINAGE
- BT - BURIED TELEPHONE LINE
- W - WATER LINE
- EM - ELECTRIC METER
- GV - GAS VALVE
- GM - GAS METER
- WV - WATER VALVE
- WM - WATER METER
- PCP - PEDESTRIAN CROSSING POST
- BFP - BACKFLOW PREVENTER
- FR - FIRE HYDRANT
- ⊙ - SANITARY SEWER MANHOLE
- ⊙ - SEWER STUB OUT
- ⊙ - SEWER CLEAN OUT
- ⊙ - SERVICE POLE
- ⊙ - POWER POLE
- ⊙ - LIGHT POLE
- ⊙ - GUY ANCHOR
- ⊙ - SINGLE SUPPORT SIGN
- ⊙ - MULTIPLE SUPPORT SIGN
- ⊙ - POLYVINYL CHLORIDE PIPE
- RCP - REINFORCED CONCRETE PIPE
- CMP - CORRUGATED METAL PIPE
- IN - INVERT
- X - TREE REMOVAL
- ▨ - DEMO
- - SILT FENCE
- - LIMITS OF CONSTRUCTION/CLEARING

A1 DEMOLITION & EROSION CONTROL PLAN
 SCALE: 1" = 20'
 0 10' 20' 40'

BASKERVILLE-DONOVAN, INC.
 Innovative Infrastructure Solutions
 449 W. MAIN ST., PENSACOLA, FL 32502 (850) 398-9861
 ENGINEERING BUSINESS: EB-0000340
 Panama City Beach - Tallahassee - Mobile - Brewster County - Tampa

KEITH P. GUTHRIE, P.E.
 FL. Reg. Engineer #75905

KRISPY KREME
 1730 E. NINE MILE ROAD

PROJECT NO:	DESIGNED BY:	PROJ. MGR:	DATE:
117401.01	DKH	DKH	AUGUST 2018

NO.	DATE	APPR.	REVISION/ACTION TAKEN

DEMOLITION & EROSION CONTROL PLAN

C-102