

K:\1174 Delcney Projects\117401.01 Nine Mile Road\DWG\C-100.dwg, Aug 10, 2018 - 8:40:23AM, toverton

LEGEND

	ASPHALT PAVEMENT
	EXISTING CONCRETE PAVEMENT/SIDEWALK
	PROPOSED CONCRETE/SIDEWALK
	GRASSED/LANDSCAPE AREA
	BSL BUILDING SETBACK LINE
	TRAFFIC FLOW

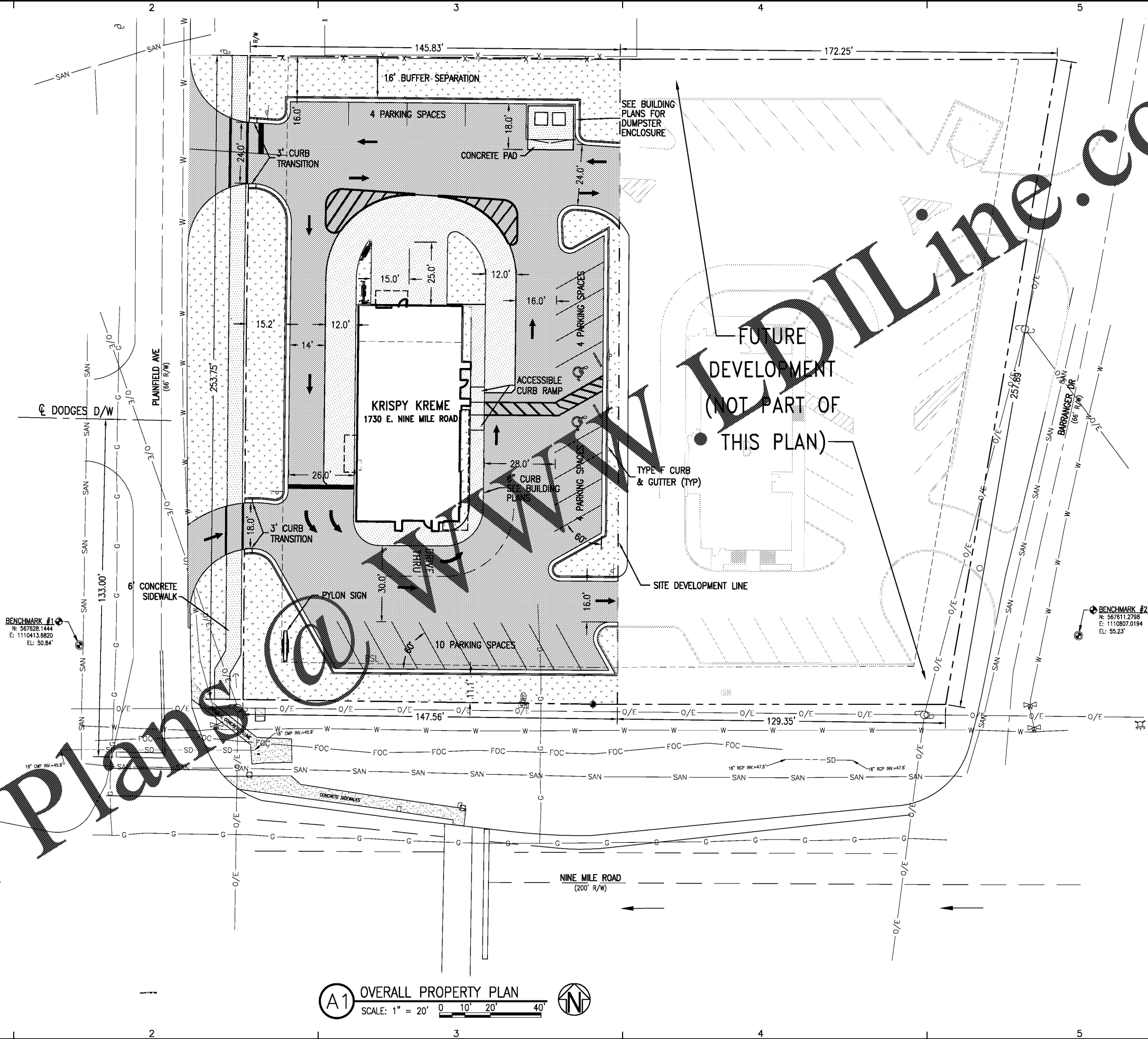
BENCHMARKS

BENCHMARK #1
 5/8" IRON ROD W/ RED CAP SET #0340
 N: 567628.1444
 E: 1110413.6820
 EL: 50.84'

BENCHMARK #2
 5/8" IRON ROD W/ RED CAP SET #0340
 N: 567611.2798
 E: 1110807.0194
 EL: 55.23'

PARKING SUMMARY

	RATIO	SPACES REQUIRED	SPACES PROVIDED
PARKING	1 PER 25 SEATS	33 SEATS = 14	22
HC PARKING	1/25	1	2



Order Plans

A1 OVERALL PROPERTY PLAN
 SCALE: 1" = 20' 0 10' 20' 40'

BASKERVILLE-DONOVAN, INC. Innovative Infrastructure Solutions 449 W. MAIN ST., PENSACOLA, FL 32502 (850) 396-9861 ENGINEERING BUSINESS: EB-0000340 <small>Pensacola - Panama City Beach - Tallahassee - Mobile - Brewster County - Tampa</small>	<small>KEITH P. GUTHRIE, P.E. FL Reg. Engineer #79505</small>	KRISPY KREME 1730 E. NINE MILE ROAD	
PROJECT NO: 117401.01	DESIGNED BY: DKH	NO. DATE	REVISION/ACTION TAKEN
DRAWN BY: CAD	CHK'D BY:	APPR.	
PROJ. MGR: DKH	DATE: AUGUST 2018		NOT RELEASED FOR CONSTRUCTION BY DATE
OVERALL PLAN			
C-100			