

EXHAUST FAN INFORMATION - Job#3480825

FAN UNIT NO.	TAG	FAN UNIT MODEL #	CFM	ESP.	RPM	H.P.	B.H.P.	Ø	VOLT	FLA	DISCHARGE VELOCITY	WEIGHT (LBS.)	SDNES
1		DUI80HFA	1953	1.250	1076	1.500	0.6300	3	208	4.4	451 FPM	158	12.6

MUA FAN INFORMATION - Job#3480825

FAN UNIT NO.	TAG	FAN UNIT MODEL #	BLOWER	HOUSING	MIN CFM	DESIGN CFM	ESP.	RPM	H.P.	B.H.P.	Ø	VOLT	FLA	WEIGHT (LBS.)	SDNES	BURNER EFFICIENCY(%)
2		A1-D250-15D	15MF-1-MDD	A1-D.250	1000	1562	0.500	1741	1.000	0.8170	3	208	3.1	615	16.2	92

GAS FIRED MAKE-UP AIR UNIT(S)

FAN UNIT NO.	TAG	INPUT BTUs	OUTPUT BTUs	TEMP. RISE	REQUIRED INPUT GAS PRESSURE	GAS TYPE
2	B9409	82256		50 deg F	7 in. w.c. - 14 in. w.c.	Natural

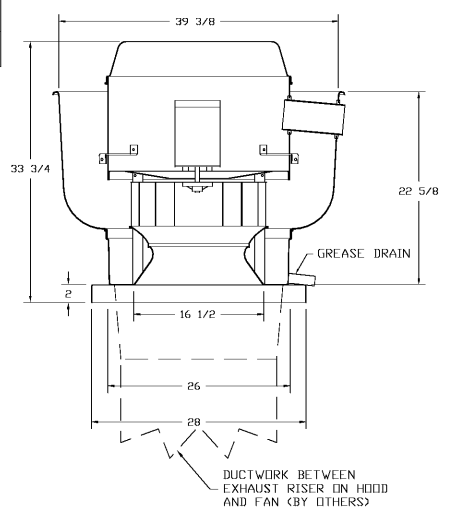
FAN OPTIONS

FAN UNIT NO.	TAG	OPTION (Qty. - Descr.)
1		1 - Grease Box 1 - AC Interlock Relay - 24VAC Coil 1 - Motorized Backdraft Damper for A1-D Housing
2		1 - Low Fire Start 1 - Inlet Pressure Gauge, 0-35" 1 - Manifold Pressure Gauge, -5 to 15" wc 1 - Separate 120V Wiring Package (Required and used only for DCV or Prewire with VFD) - Three Phase Only

CURB ASSEMBLIES

NL	ON FAN	WEIGHT	ITEM	SIZE
1	# 1	34 LBS	Curb	26.500"W x 26.500"L x 24.000"H Vented Hinged

FAN #1 DUB80HFA - EXHAUST FAN



FEATURES:

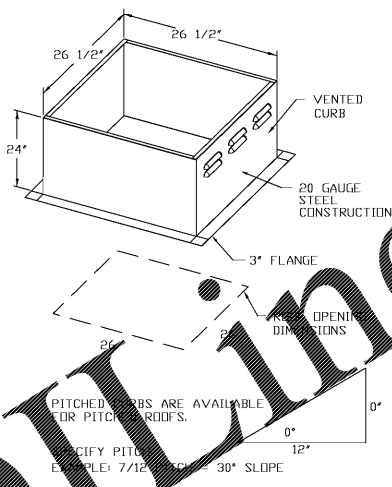
- DIRECT DRIVE CONSTRUCTION (NO BELTS/PULLEYS)
- ROOF MOUNTED FANS
- RESTAURANT MODEL
- UL705 AND UL762 AND UL-C-S645
- VARIABLE SPEED CONTROL
- INTERNAL WIRING
- WEATHERPROOF DISCONNECT
- THERMAL OVERLOAD PROTECTION (SINGLE PHASE)
- HIGH HEAT OPERATION 300°F (149°C)
- GREASE CLASSIFICATION TESTING

NORMAL TEMPERATURE TEST
EXHAUST FAN MUST OPERATE CONTINUOUSLY WHILE EXHAUSTING AIR AT 300°F (149°C) UNTIL ALL FAN PARTS HAVE REACHED THERMAL EQUILIBRIUM, AND WITHOUT ANY DETERIORATING EFFECTS TO THE FAN WHICH WOULD CAUSE UNSAFE OPERATION.

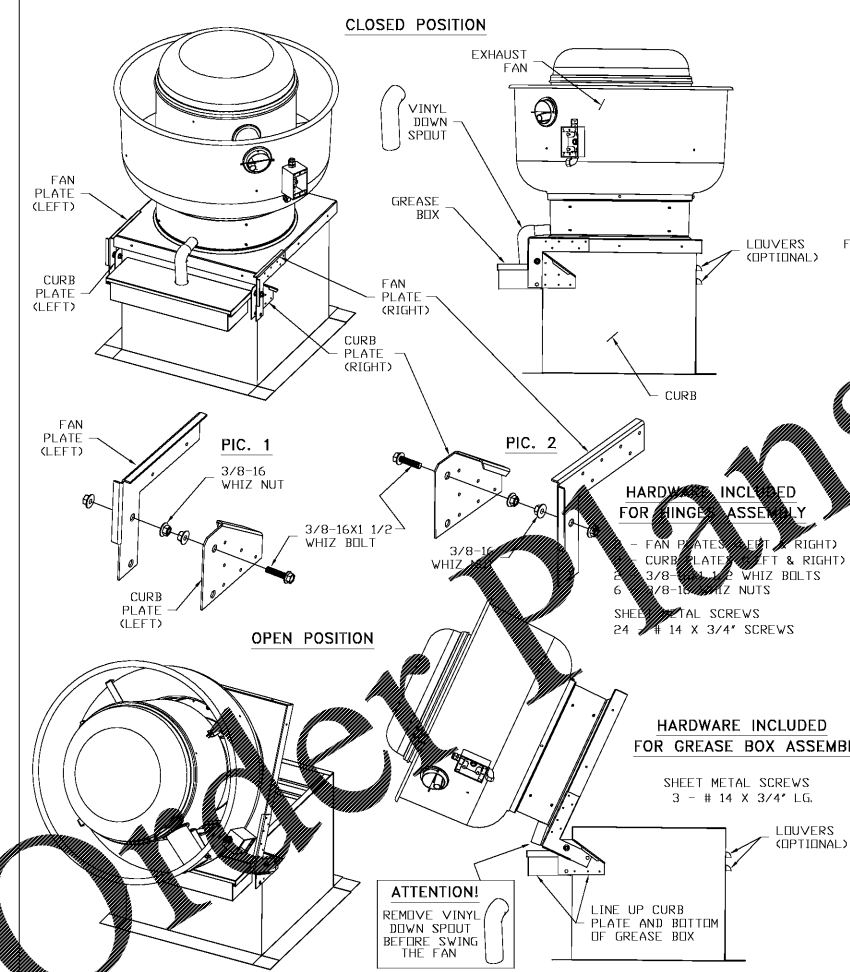
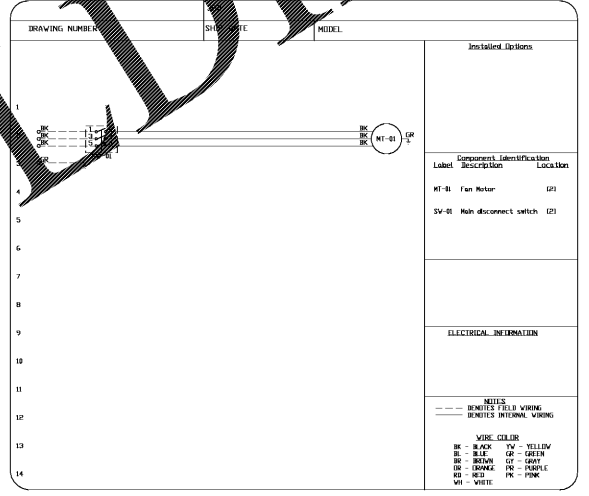
ABNORMAL FLARE-UP TEST
EXHAUST FAN MUST OPERATE CONTINUOUSLY WHILE EXHAUSTING BURNING GREASE VAPORS AT 600°F (316°C) FOR A PERIOD OF 15 MINUTES WITHOUT THE FAN BECOMING DAMAGED TO ANY EXTENT THAT COULD CAUSE AN UNSAFE CONDITION.

OPTIONS

- GREASE BOX

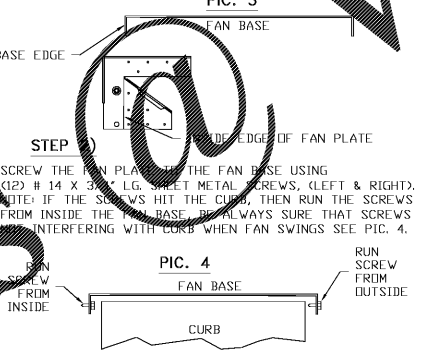


PITCHED CURBS ARE AVAILABLE FOR PITCHED ROOFS.
SPECIFY PITCH AND SLOPE. EXAMPLE: 7/12 PITCH, 30° SLOPE



FIELD ASSEMBLY OF THE HINGES

STEP 1)
ASSEMBLY (LEFT AND RIGHT) FAN PLATE WITH CURB AS SHOWN ON PIC. 1 AND PIC. 2. (IF PARTS NOT ASSEMBLED) LINE UP FAN BASE EDGE TO INSIDE EDGE OF FAN PLATE AS SHOWN ON PIC. 3.



STEP 2)
SCREW THE FAN PLATE TO THE FAN BASE USING (12) # 14 X 3/4" L.G. SHEET METAL SCREWS, (LEFT & RIGHT). NOTE: IF THE SCREWS HIT THE CURB, THEN RUN THE SCREWS FROM INSIDE THE FAN BASE. ALWAYS BE SURE THAT SCREWS ARE NOT INTERFERING WITH CURB WHEN FAN SWINGS SEE PIC. 4.

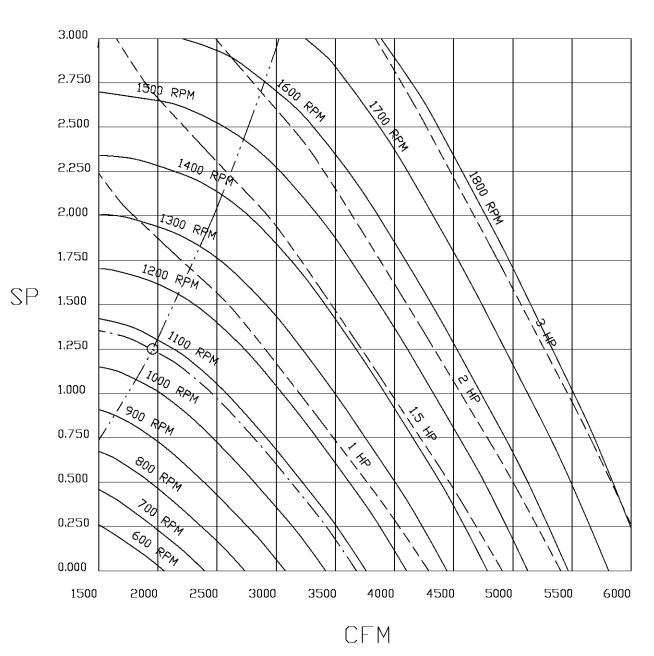
FIELD ASSEMBLY OF THE GREASE BOX

STEP 1)
ATTACH VINYL DOWN SPOUT TO THE FAN. PLACE GREASE BOX ON THE CURB. VINYL DOWN SPOUT SHOULD BE INSERTED IN HOLE OF COVER. LINE UP CURB PLATE AND BOTTOM OF THE GREASE BOX AS SHOWN ON THE SIDE VIEW. MARK ON THE CURB POSITION OF THE GREASE BOX COVER.

STEP 2)
DISASSEMBLY GREASE BOX. SCREW GREASE BOX COVER TO THE CURB USING (3) # 14 X 3/4" L.G. SCREWS. ASSEMBLY GREASE BOX. BEFORE SWING THE FAN REMOVE VINYL DOWN SPOUT.

FAN#1 - EXHAUST PERFORMANCE CURVES.

1953 CFM, 1.25 SP @ 1076 RPM and 0.63 BHP at 394 feet and 70 deg F
* Please note that these curves were adjusted for job specific temperature and altitude.



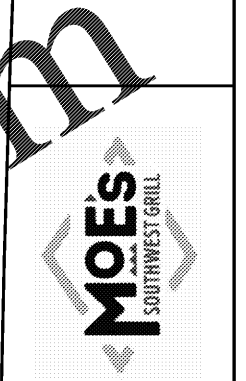
REVISIONS

NO.	DESCRIPTION	DATE

CAPTIVE

FOR REFERENCE ONLY

DATE:	
DWG.:	
DRAWN BY:	
SCALE:	
SHEET NO.:	



REV. NO.	DATE	ISSUED FOR PERMIT	DESCRIPTION

MOE'S SOUTHWEST GRILL
3732 US HWY 280
PHENIX CITY, AL 36867

MECHANICAL HOOD DRAWINGS

	DATE:
BRAND REVIEW	
PERMIT	
BID	
CONSTRUCTION	
RECORDED	
PROJECT MANAGER	DESIGNER
JB	DTI

JOB NO.
2018375.13

M-412