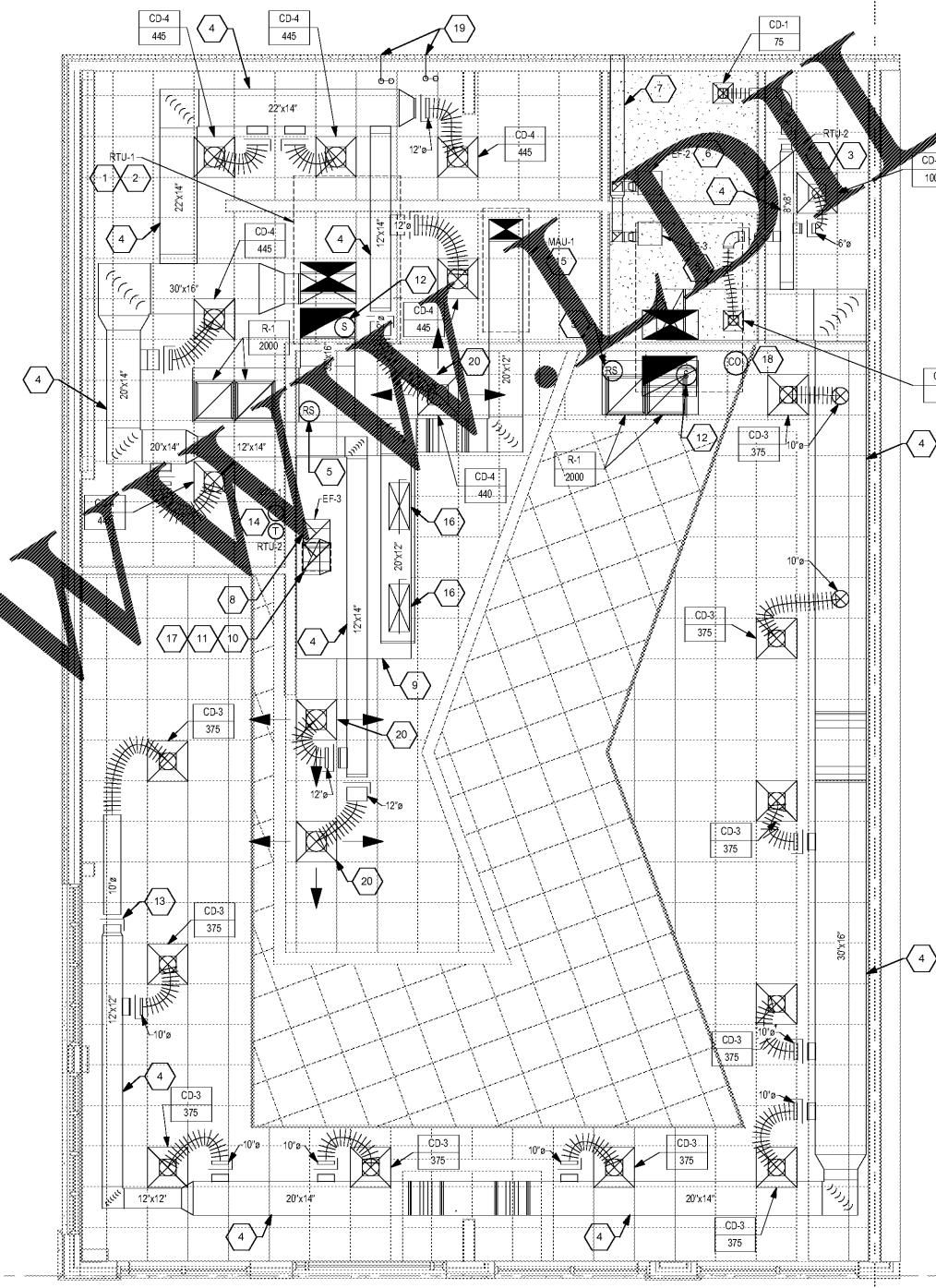
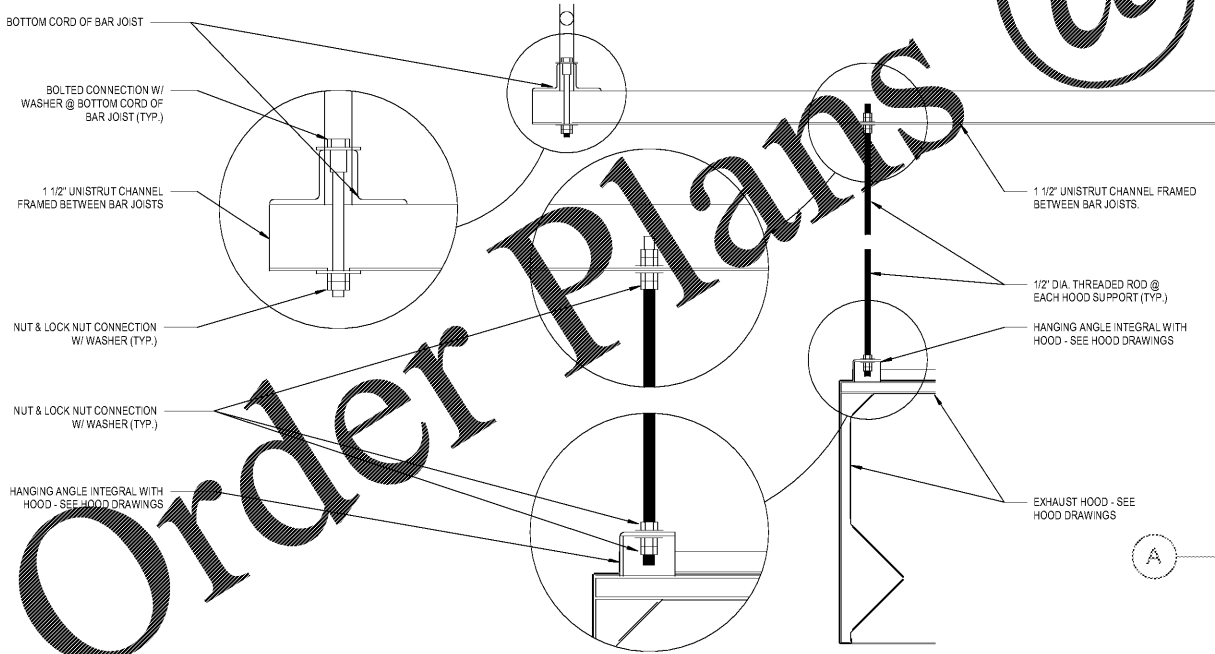
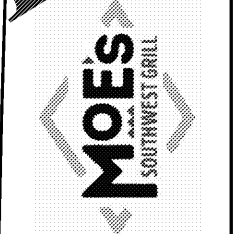


7/27/2018 1:20:11 PM
 C:\2018\201837513\Moe's Phoenix City (Farms)\04_Consolidated\Revit (2017)\MEP1 - MEP Model



MECH. PLAN KEY NOTES

- ROOFTOP UNIT MOUNTED ON DUNNAGE FRAME. REFER TO MECHANICAL ROOF PLAN.
- ROUTE 30"x16" SUPPLY AND RETURN DUCT UP THROUGH ROOF AND CONNECT TO RTU-1. TRANSITION TO FULL SIZE CONNECTIONS AT UNIT. COORDINATE EXACT LOCATION PRIOR TO START OF ANY WORK. PROVIDE FLASHING AS REQUIRED AT ALL DUCT PENETRATIONS. ENSURE SUPPLY AND RETURN DUCTS PENETRATE ROOF BETWEEN TRUSSES AND THE OUTSIDE AIR INTAKE IS LOCATED 10FT FROM ANY VENT.
- ROUTE 30"x16" SUPPLY AND RETURN DUCT UP THROUGH ROOF AND CONNECT TO RTU-2. TRANSITION TO FULL SIZE CONNECTIONS AT UNIT. COORDINATE EXACT LOCATION PRIOR TO START OF ANY WORK. PROVIDE FLASHING AS REQUIRED AT ALL DUCT PENETRATIONS. ENSURE SUPPLY AND RETURN DUCTS PENETRATE ROOF BETWEEN TRUSSES AND THE OUTSIDE AIR INTAKE IS LOCATED 10FT FROM ANY VENT.
- DUCTWORK LOCATED ABOVE CEILING. COORDINATE W/ STRUCTURE. EXTERNALLY WELDED LIQUID TIGHT INSULATION.
- THERMOSTAT REMOTE SENSOR FOR UNIT DESIGNATED. MOUNT REMOTE SENSOR IN RETURN DUCT.
- EXHAUST FAN LOCATED ABOVE RESTROOM. COORDINATE W/ ELECTRICAL CONTRACTOR.
- EXHAUST AIR DUCT ROUTED IN CEILING SPACE TO EXHAUST ON EXTERIOR WALL. COORDINATE W/ STRUCTURE. COORDINATE EXACT LOCATION PRIOR TO START OF ANY WORK.
- EXHAUST FAN ON ROOF. FOR TYPE I KITCHEN EXHAUST HOOD. REFER TO MECHANICAL ROOF PLAN.
- TYPE I EXHAUST HOOD, FURNISHED BY OWNER, INSTALLED BY MECHANICAL CONTRACTOR. REFER TO HOOD DRAWINGS AND HOOD HANGING DETAIL THIS SHEET.
- PROVIDE 16 GA. EXTERNALLY WELDED LIQUID TIGHT KITCHEN HOOD EXHAUST DUCT. EXTEND UP TO FAN ON ROOF & DOWN TO HOOD CONNECTION. ENCAPSULATE PER DETAIL 12/M-510.
- WELD DUCT TO HOOD COLLAR.
- FACTORY INSTALLED SMOKE DETECTOR IN RETURN/SUPPLY AIR DUCTS PER LOCAL AHJ FOR UNIT SHUTDOWN. CONTRACTOR SHALL PROVIDE AUDIBLE AND VISUAL ALARM IN A CONSTANTLY OCCUPIED LOCATION. ALARM SHALL BE LABELED "DUCT TROUBLE". TYPICAL FOR RTU-1 & RTU-2.
- PROVIDE MANUAL VOLUME CONTROL DAMPER, TYPICAL.
- WALL MOUNTED THERMOSTAT FOR RTU-1, AND RTU-2 AT 48" A.F.F. THERMOSTAT SHALL BE 7-DAY PROGRAMMABLE WITH NIGHT SETBACK AND A MINIMUM 5 DEGREE DEADBAND. CONFIRM HEIGHT COMPLIES WITH BARRIER FREE. AND ALL OTHER LOCAL REQUIREMENTS. MULTIPLE THERMOSTATS SHALL BE STACKED IN A VERTICAL CONFIGURATION WITH A MINIMUM OF 8" CLEARANCE BELOW EACH THERMOSTAT. LABEL EACH THERMOSTAT TO THEIR RESPECTIVE UNIT.
- MAKE-UP AIR UNIT ON ROOF, REFER TO MECHANICAL ROOF PLAN. INTERLOCK WITH HOOD CONTROLS.
- MAKE-UP AIR CONNECTION TO SUPPLY AIR PLENUM IN FRONT OF HOOD. REFER TO HOOD DRAWING SHEET M-410.
- PROVIDE CLEANOUTS IN EXHAUST DUCT PER NFPA 96.
- CO2 SENSOR LOCATED AT 60" A.F.F. ON WALL. INTERLOCK WITH RESPECTIVE HVAC UNIT COORDINATE CONTROLS WITH HVAC UNIT AND PROVIDE ADDITIONAL CONTROL COMPONENTS AS MAY BE NEEDED FOR A COMPLETE AND OPERATIONAL SYSTEM.
- COMBINATION AIR/FLUE VENT TO WATER HEATER. LOCATE A CODE MINIMUM DISTANCE AWAY FOR OUTSIDE AIR INTAKES.
- DIFFUSER SHALL BE 2-WAY OR 3-WAY AS NECESSARY SUCH THAT THE AIRFLOW DIRECTION(S) FACING THE HOOD IS BLANKED OFF. 2-WAY OR 3-WAY DIFFUSERS MAY BE SUBSTITUTED WITH PERFORATED DIFFUSERS OF SIMILAR TYPE.



REV. NO.	DATE	ISSUED FOR PERMIT	DESCRIPTION
1	07/27/18		

DRAFT

MOE'S SOUTHWEST GRILL
 3732 US HWY 280
 PHOENIX CITY, AL 36867

MECHANICAL PLAN

DATE:	
BRAND REVIEW	07/27/2018
PERMIT	07/27/2018
BID	-/-/-
CONSTRUCTION	-/-/-
RECORDED	-/-/-
PROJECT MANAGER	DESIGNER
JB	DTI

JOB NO.
 2018375.13

M-110