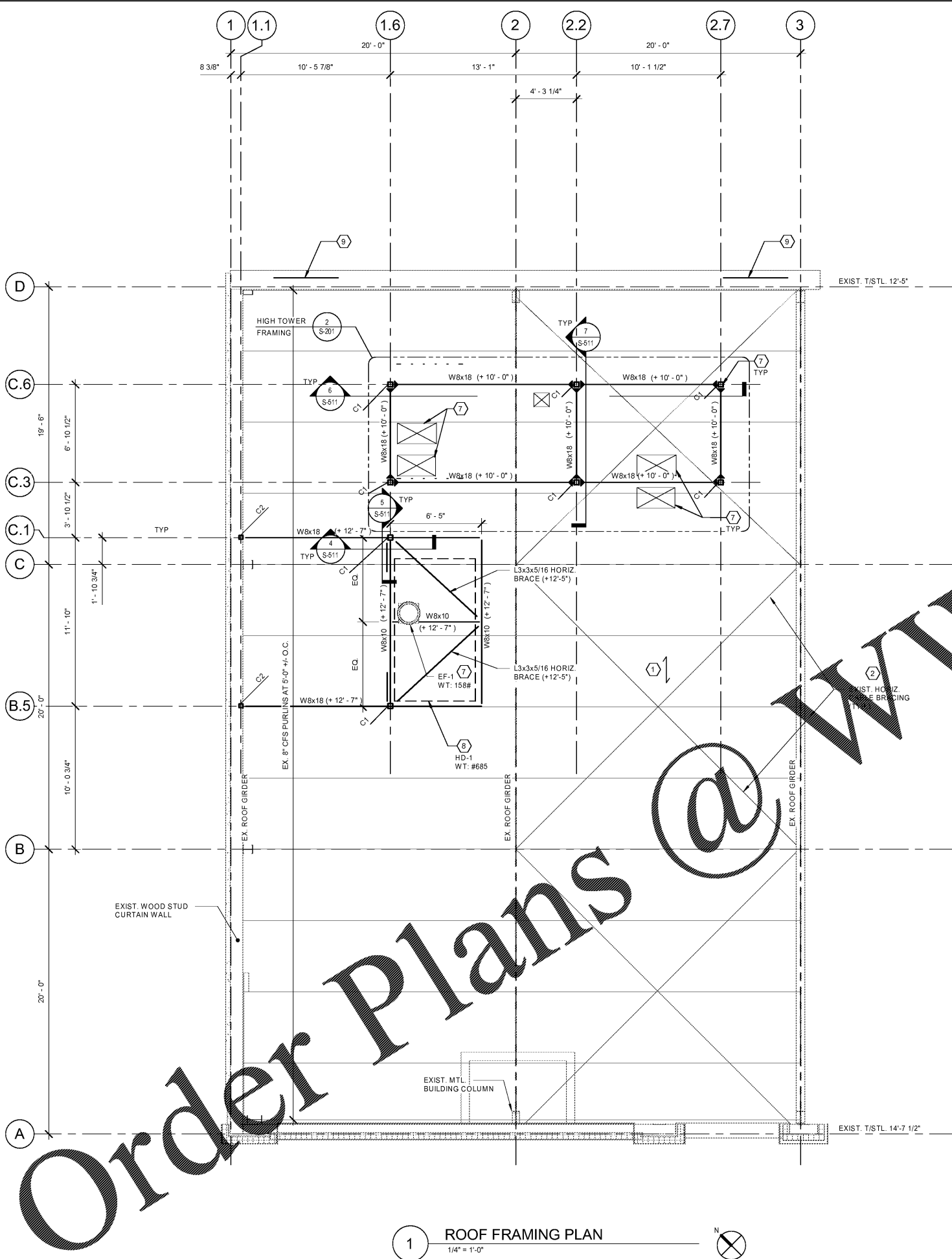
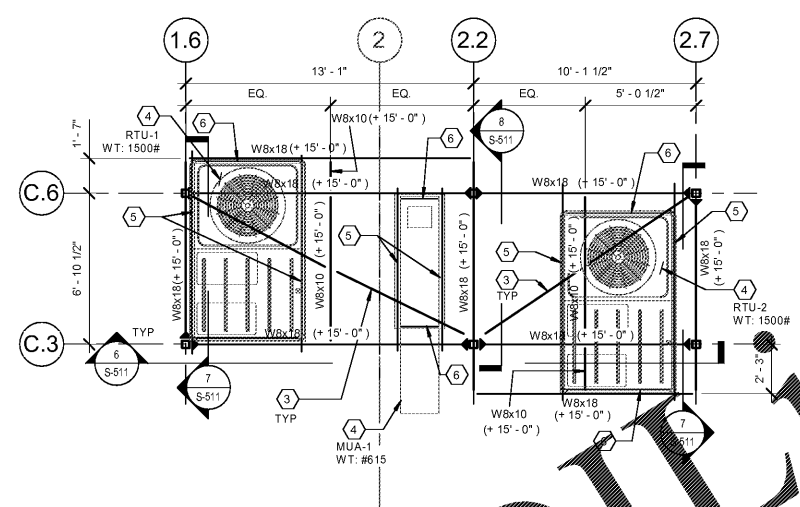


7/20/2018 1:51:12 AM



1 ROOF FRAMING PLAN
1/4" = 1'-0"



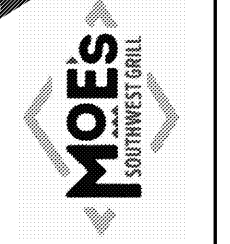
2 EQUIPMENT PLATFORM PLAN
1/4" = 1'-0"

GENERAL NOTES:

- DO NOT SCALE DRAWING.
- SEE SHEET S-010 FOR KEY PLAN DESIGNATING AREA OF WORK.
- TOP OF INTERIOR SLAB ELEV. = (0'-0"). ALL OTHER ELEVATIONS SHOWN ARE REFERENCED FROM THIS ELEVATION.
- SEE ARCH. DRAWINGS FOR DIMENSIONS NOT SHOWN.
- CONTRACTOR TO VERIFY ALL THE DIMENSIONS AND ALL EXISTING CONDITIONS PRIOR TO ORDERING MATERIALS AND COORDINATE ANY DISCREPANCIES WITH THE ENGINEER.
- WHERE EXISTING CONDITIONS ARE CUT OR DISTURBED TO PERMIT INSTALLATION OF NEW WORK, CONTRACTOR SHALL MATCH EXISTING DISTURBED CONSTRUCTION TO ORIGINAL CONDITION. ALL WORK COMPLETED ON THE ROOF SHALL BE PATCH AND SEALED TO ENSURE WEATHER-TIGHT.
- ROOF FRAMING INFORMATION SHOWN ON THIS PLAN IS BASED ON EXISTING BUILDING SHELL PLANS DATED 12/20/2017 BY HAINES GIBSON & ASSOCIATES IN COMBINATION WITH FIELD OBSERVATIONS PERFORMED BY GPD GROUP.
- ALL CONNECTIONS FULLY RESISTING MOMENT CONNECTION. SEE DETAIL 10, & 11 OF SHEET S-511 FOR DETAILS.
- (X) INDICATES TOP OF STEEL REFERENCED FROM TOP OF EXISTING SLAB (+0'-0").
- *C* DESIGNATES STEEL COLUMN. SEE COLUMN SCHEDULE ON THE FOUNDATION PLAN, S-110.

KEY NOTES

- EXISTING ROOF IS CONSTRUCTED WITH ROOFING MEMBRANE AND RIGID INSULATION OVER 1-1/2" METAL ROOF DECKING.
- CONTRACTOR TO TAKE CARE NOT TO CUT AND/OR DAMAGE THE EXISTING ROOF CABLE BRACING DURING CONSTRUCTION OF NEW WORK. CONTRACTOR SHALL VERIFY LOCATION OF CABLE BRACE AND NOTIFY E.O.R. IMMEDIATELY IF CONFLICT OCCURS WITH NEW WORK.
- HSS 3x3x5/16 HORIZ. DIAGONAL BRACE. BOTTOM OF BRACE TO MATCH BOTTOM OF STEEL BEAM. WELD BRACE TO BEAMS w/ 1/4" FILLET WELD ALL AROUND.
- NEW ROOF EQUIPMENT AND CURB TO STEEL FRAMING. REFER TO 2/S-511 FOR ROOF EQUIPMENT SUPPORT DETAIL.
- MC6x15.3 LAID FLAT WITH FLANGES TURNED DOWN ON TOP OF STEEL BEAMS. ALIGN CHANNELS WITH EQUIPMENT CURB. EXTEND MC6 CHANNEL 6" PAST BEARING END (TYP.). SEE DETAIL 2/S-511 FOR MAKE-UP AIR UNIT (MAU) SUPPORT FRAMING.
- C6x8.2 LAID FLAT BETWEEN MC6'S. LOCATE CHANNEL BENEATH ROOF CURB.
- PROVIDE FRAMING DECK SUPPORT AT ALL PENETRATIONS. SEE 13/S-511 FOR DETAILS FOR NEW PENETRATION THROUGH DECK (LIGHT GAUGE FRAMING NOT SHOWN FOR CLARITY). COORDINATE ROOF PENETRATION SIZE AND LOCATION THROUGH DECKING WITH ROOF EQUIPMENT MANUFACTURER'S CUT SHEETS. CONTRACTOR SHALL ENSURE THE ROOF SHALL BE PATCHED AND SEALED TO ENSURE WEATHER-TIGHT. WHERE STEEL COLUMNS PENETRATE ROOF, PROVIDE 1" EXPANSION JOINT MATERIAL BETWEEN FRAMING AND COLUMN.
- NEW HOODS PER MANUFACTURER. REFER TO ARCHITECTURAL & MECHANICAL PLANS FOR ADDITIONAL INFORMATION. SEE DETAIL 1/S-511 FOR HANGING DETAIL.
- NEW (2) 600S200-43 BOX HEADER OVER NEW MAN DOOR. SEE DETAIL 11/S-511 FOR HEADER TO JAMB DETAIL. SEE ARCH'L PLANS FOR LOCATION AND DIMENSION OF NEW DOOR OPENINGS.



REV. NO.	DATE	ISSUE FOR PERMIT	DESCRIPTION
	07/27/18		

DRAFT

MOE'S SOUTHWEST GRILL
3732 US HWY 280
PHENIX CITY, AL 36867

ROOF FRAMING PLAN

DATE:	
BRAND REVIEW	07/27/2018
PERMIT	07/27/2018
BID	--/--/----
CONSTRUCTION	--/--/----
RECORDED	--/--/----

PROJECT MANAGER	DESIGNER
JB	SC

JOB NO.
2018375.13

S-201