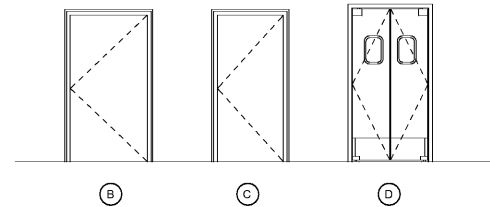
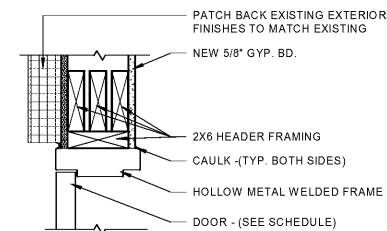


MARK	DOOR TYPE	ROOM NAME	DOOR				GLAZING	FRAME		HARDWARE SET	DETAILS			COMMENTS	
			QTY	WIDTH	HEIGHT	THICK		MATERIAL	FINISH		HEAD	JAMB	SILL		
1	B	DINING	1	3'-0"	6'-8"	2"	HM INSULATED	--	HOLLOW MTL	PAINT	C	6	5	7	REFER TO GENERAL DOOR NOTES
2	B	BACK OF HOUSE	1	3'-0"	6'-8"	2"	S.C. WOOD	--	HOLLOW MTL	PAINT	E	9	8	--	REFER TO GENERAL DOOR NOTES
3	C	WOMENS	1	3'-0"	7'-0"	2"	S.C. WOOD	--	HOLLOW MTL	PAINT	E	9	8	--	REFER TO GENERAL DOOR NOTES
4	C	MENS	1	3'-0"	7'-0"	2"	S.C. WOOD	--	HOLLOW MTL	PAINT	E	9	8	--	REFER TO GENERAL DOOR NOTES
5	D	KITCHEN	2	1'-6"	7'-0"	2"	ABS/PVC	--	HOLLOW MTL	PRE-FINISHED	D	12	11	--	VENDOR: ELIASON / FINISH: CLOUD GRAY / REFER TO GENERAL DOOR NOTES, DOOR: PII Plus, PR 40X80
6		DINING	2	3'-0"	7'-0"		ALUM.	1/4" CLR TEMPERED	ALUM.	CLEAR ANODIZED	EXIST	EXIST	EXIST	1	F.V. EXISTING DOOR. PROVIDE NEW THRESHOLD
7	B	BACK OF HOUSE	1	3'-0"	6'-8"	2"	HM INSULATED	--	HOLLOW MTL	PAINTED	EXIST	EXIST	EXIST	7	F.V. EXISTING DOOR. PROVIDE NEW THRESHOLD

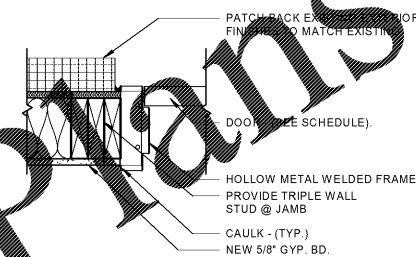
VENDOR CONTACT:
ELIASON BEN FRANCO bfranco@seneca.com 419-280-8176



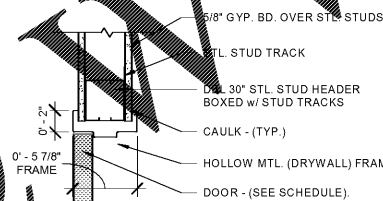
14 DOOR TYPES
1/4" = 1'-0"



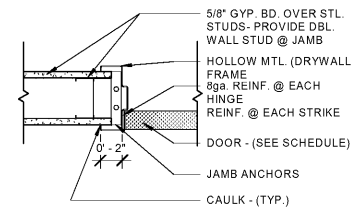
6 DOOR HEAD DETAIL - EXTERIOR
1 1/2" = 1'-0"



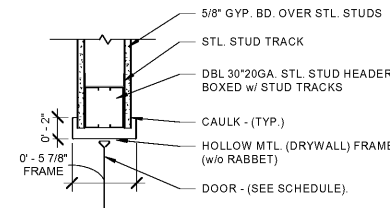
5 DOOR JAMB DETAIL - EXTERIOR
1 1/2" = 1'-0"



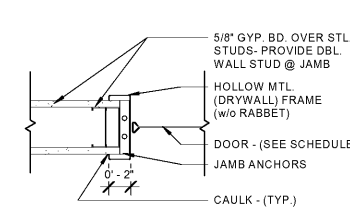
9 DOOR HEAD DETAIL - H.M.
1 1/2" = 1'-0"



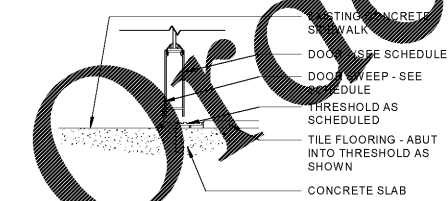
8 DOOR JAMB DETAIL - H.M.
1 1/2" = 1'-0"



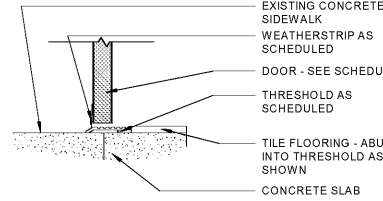
12 DOOR HEAD DETAIL - SWINGING
1 1/2" = 1'-0"



11 DOOR JAMB DETAIL - SWINGING
1 1/2" = 1'-0"



1 DOOR THRESHOLD DETAIL - STOREFRONT
1 1/2" = 1'-0"



7 DOOR THRESHOLD DETAIL - SOLID
1 1/2" = 1'-0"

GENERAL DOOR NOTES

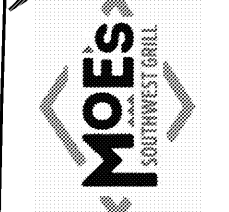
1. ALL HARDWARE SHALL BE FURNISHED AND INSTALLED BY THE GENERAL CONTRACTOR UNLESS NOTED OTHERWISE.
2. SEE HARDWARE SETS FOR REQ'D. FINISHES.
3. ALL DOORS TO BE KEYPED ALIKE.
4. HOLLOW METAL FRAMES SHALL BE 16 GA. STEEL.
5. ALL DOORS SHALL HAVE ADA APPROVED TYPE HARDWARE (VERIFY IN FIELD).
6. EXIT HARDWARE SHALL COMPLY WITH ALL APPLICABLE CODES.
7. THE MAXIMUM DIMENSION FROM THE TOP OF THE THRESHOLD TO THE EXTERIOR LANDING @ EXTERIOR DOORS SHALL NOT EXCEED 1/2" (VERIFY IN FIELD).
8. ALL GLAZING IN DOORS AND WITHIN A 24" ARC OF THE SIDES OF EGRESS DOORS SHALL BE OF AN APPROVED SAFETY TYPE. (VERIFY IN FIELD)
9. PAINT HOLLOW METAL FRAMES & DOORS WHERE SCHEDULED w/2 FINISH COATS OF HIGH-GLOSS ACRYLIC ENAMEL. SEE ELEVATION FINISH SCHEDULE.
10. PROVIDE SIGNS @ DINING ROOM EXIT DOORS TO READ "THIS EXIT MUST REMAIN UNLOCKED WHEN THE BUILDING IS OCCUPIED. LETTERS SHALL BE 1" TALL & MATCH COLOR ON CONTRASTING BACKGROUND.
11. ADJUST CLOSERS SUCH AS T SWELLS TO BE 10" FROM AN OPEN POSITION OF 70 DEGREES, THE DOORS SHALL TAKE AT LEAST 3 SECONDS TO MOVE TO A POSITION FROM THE MATCH, MEASURED TO THE LEADING EDGE OF DOOR. MAXIMUM OPENING FORCE OF DOORS SHALL BE 5 LBF.
12. DOOR DETAILS DO NOT DEPICT ALL INTERIOR FINISHES. REFER TO INTERIOR ELEVATIONS & FINISH MATERIAL SCHEDULE FOR REQUIRED FINISHES.
13. STOREFRONT DOORS & FRAMES ARE SCHEDULED AROUND KAWNEER PRODUCTS. FIELD VERIFY EXISTING STOREFRONT SYSTEM & MATCH EXISTING. CROSS REFERENCE SPECIFIED PRODUCTS TO EQUIVALENT EXISTING STOREFRONT MANUFACTURER'S PRODUCTS.
14. HARDWARE FINISHES AT NEW STOREFRONT DOORS SHALL MATCH THE EXISTING STOREFRONT COLOR/FINISH. FIELD VERIFY.

GENERAL WINDOW NOTES

1. REWORK, PATCH & REPAIR EXISTING STOREFRONT AS REQUIRED TO ACCOMMODATE NEW ENTRANCE DOOR (FIELD VERIFY EXISTING CONDITIONS).
2. STOREFRONT DOORS & FRAMES ARE SCHEDULED AROUND KAWNEER PRODUCTS. FIELD VERIFY EXISTING STOREFRONT SYSTEM & MATCH EXISTING. CROSS REFERENCE SPECIFIED PRODUCTS TO EQUIVALENT EXISTING STOREFRONT MANUFACTURER'S PRODUCTS WHERE NECESSARY.
3. ALL GLAZING IN WINDOW UNITS WITHIN A 24" ARC OF THE SIDES OF EGRESS DOORS AND ALONG SIDEWALKS OR WALKING SURFACES SHALL BE OF AN APPROVED SAFETY TYPE.

HARDWARE SETS

SET A:	OFFSET PIVOTS	KAWNEER	TOP, BOTTOM & INTERMEDIATE SEALAIR
2 SETS	WEATHERSTRIP	KAWNEER	SEALAIR (NORTON 1605 BF)
1 SET	CLOSERS	KAWNEER	CS-9
2	THRESHOLD	KAWNEER	4 1/2" X 1/2" OFFSET
2	PULLS	KAWNEER	CS-9
2	PUSH BARS	KAWNEER	CPI
1	DEADLOCK/LATCH	KAWNEER	ADAMS RITE MS+1890
1	LATCH PADDLE	KAWNEER	ADAMS RITE 4590
1	STRIKE	KAWNEER	ADAMS RITE RADIUSED
1	CYLINDER	KAWNEER	AS REQ'D
1 PAIR	FLUSH BOLTS	KAWNEER	FLUSH BOLTS
SET B:	OFFSET PIVOTS	KAWNEER	TOP, BOTTOM & INTERMEDIATE SEALAIR
1 SET	WEATHERSTRIP	KAWNEER	SEALAIR (NORTON 1605 BF)
1	CLOSERS	KAWNEER	CS-9
1	PULL	KAWNEER	CPI
1	PUSH BAR	KAWNEER	ADAMS RITE MS+1890
1	DEADLOCK/LATCH	KAWNEER	ADAMS RITE 4590
1	LATCH PADDLE	KAWNEER	ADAMS RITE RADIUSED
1	STRIKE	KAWNEER	AS REQ'D
1	CYLINDER	KAWNEER	AS REQ'D
SET C:	CONT. GEAR HINGE	PENKOC	CFM79 X AMS
1 EA.	EXIT DEVICE	VON DUPRIN	99775EO SURFACE MTD. w/o ALARM
1 EA.	CLOSER	NORTON	1600 SERIES X PA X DA X TRI-STYLE
2 EA.	ARMOR PLATE	ROCKWOOD	42"H X 40"W X 32"D
1 EA.	KICK DOWN STOP	ROCKWOOD	408
1 EA.	CHAIN DR. CHECK	NATIONAL GD.	300D THRU DOOR MTG.
1 EA.	DOOR ALARM	RB ENTERPRISES	THE MONITOR 400
1 EA.	THRESHOLD	NATIONAL GD.	424-42"
SET D:	ALL HARDWARE PROVIDED BY DOOR MANUFACTURER		
SET E:	HINGES	STANLEY	#BB1279 - 4 1/2" X 4 1/2" US26D
1 EA.	LATCH	SCHLAGE	A-SERIES LEVON D1S 1600
1 EA.	CLOSER	LCN	SERIES X PA X DA X TRI-STYLE
1 EA.	WALL STOP	ROCKWOOD	408
2 EA.	SILENCERS	ROCKWOOD	608
2 EA.	KICKPLATE	ROCKWOOD	10" X 34" US26D
SET F:	HINGES	STANLEY	FBB179 4 1/2" X 4 1/2" US26D
1 EA.	LOCKSET	SCHLAGE	A-SERIES LEVON A40S US26D
1 EA.	CLOSER	NORTON	1600 SERIES X PA X DA X TRI-STYLE
1 EA.	WALL STOP	ROCKWOOD	408
2 EA.	SILENCERS	ROCKWOOD	608
2 EA.	KICKPLATE	ROCKWOOD	10" X 34" US26D
SET G:	HARDWARE	STANLEY	S403-925
1 SET	LOCKSET	ADAMS RITE	MS 1850S-050 SERIES MS® DEADLOCK1600



REV. NO.	DATE	DESCRIPTION
01	07/27/2018	ISSUE FOR PERMIT

DRAFT

MOES SOUTHWEST GRILL
3732 US HWY 280
PHENIX CITY, AL 36867

DOOR/WINDOW SCHEDULES & DETAILS

DATE:	
BRAND REVIEW	07/27/2018
PERMIT	07/27/2018
BID	--/--/----
CONSTRUCTION	--/--/----
RECORDED	--/--/----
PROJECT MANAGER	DESIGNER
JB	SC

JOB NO.
2018375.13

A-700