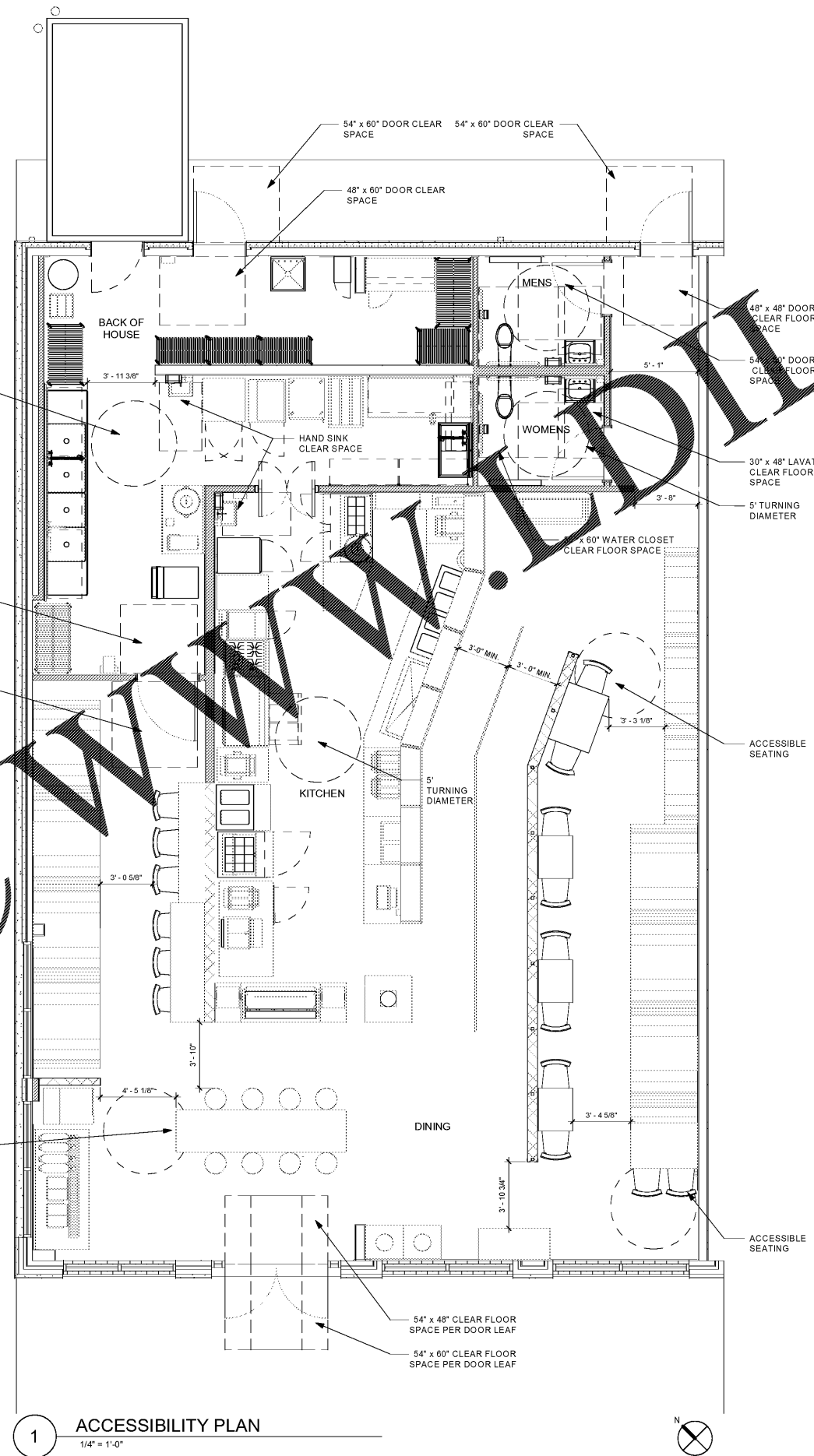


Order Plans @



1 ACCESSIBILITY PLAN
 1/4" = 1'-0"

GENERAL NOTES:

- ALL ENTRANCES/EXIT DOORS TO BUILDING SHALL BE MADE ACCESSIBLE TO PERSONS WITH DISABILITIES AND BE OPERABLE FROM THE INSIDE WITHOUT THE USE OF ANY SPECIAL KNOWLEDGE OR EFFORT.
- LATCHING AND LOCKING DOORS THAT ARE HAND ACTIVATED AND WHICH ARE IN A PATH OF TRAVEL SHALL BE OPERABLE WITH A SINGLE EFFORT BY LEVER TYPE HARDWARE, PANIC BARS, PUSH PULL ACTIVATING BAR, OR OTHER HARDWARE DESIGNED TO PROVIDE PASSAGE WITHOUT REQUIRING THE ABILITY TO WRAP OR TWIST THE OPENING HARDWARE. LOCKED EXIT DOORS SHALL BE OPERABLE IN THE EGRESS DIRECTION.
- HAND ACTIVATED DOOR OPENING HARDWARE SHALL BE CENTERED BETWEEN 34" AND 48" ABOVE THE FLOOR.
- EVERY DOORWAY WHICH IS LOCATED WITHIN AN ACCESSIBLE PATH OF TRAVEL SHALL BE OF A SIZE AS TO PERMIT THE INSTALLATION OF A DOOR NOT LESS THAN 36" IN WIDTH AND NOT LESS THAN 6'-8" IN HEIGHT. WHEN INSTALLED, SUCH DOORS SHALL OPERATE AS ABOVE IN EGRESS DIRECTION.
- FOR HINGED DOORS, THE OPENING WIDTH SHALL BE MEASURED WITH THE DOOR POSITIONED AT AN ANGLE OF 90 DEGREES FROM ITS CLOSED POSITION.
- THE BOTTOM 10" OF DOORS (EXCEPT AUTOMATIC SLIDING DOORS) SHALL HAVE A SMOOTH, UNINTERFERED SURFACE TO ALLOW THE DOOR TO BE OPENED BY A WHEELCHAIR FOOTREST WITHOUT CREATING A TRAP OR HAZARDOUS CONDITION. WHEN NARROW FRAMED DOORS ARE USED, A 10" HIGH WHEEL PANH shall BE INSTALLED ON THE FLUSH SIDE OF THE DOOR. WHEN THE DOOR IS TO BE OPENED BY A WHEELCHAIR FOOTREST WITHOUT CREATING A TRAP OR HAZARDOUS CONDITION.
- MAXIMUM EFFORT TO OPERATE DOORS SHALL NOT EXCEED 8.5 POUNDS FOR EXTERIOR DOORS, 5 POUNDS FOR INTERIOR DOORS AND 15 POUNDS FOR FIRE DOORS, WHEN SUCH EFFORT IS APPLIED AT RIGHT ANGLES TO HINGED DOORS AND AT THE CENTER PLAN OF SLIDING OR FOLDING DOORS. COMPENSATING DEVICES OR AUTOMATIC DOOR OPERATORS MAY BE UTILIZED TO MEET THE ABOVE STANDARDS. WHEN FIRE DOORS ARE REQUIRED, THE MAXIMUM EFFORT TO OPERATE THE DOOR MAY BE INCREASED TO THE MAXIMUM ALLOWABLE TO THE APPROPRIATE ADMINISTRATIVE AUTHORITY NOT TO EXCEED 15 POUNDS.
- THE SEPARATION DISTANCE TO EXIT OR EXIT ACCESS DOORWAYS SHALL BE MEASURED TO ANY POINT ALONG THE WIDTH OF THE DOORWAY.
- LOCATE FIRE EXTINGUISHERS SUCH THAT ALL PORTIONS OF THE BUILDING ARE WITHIN 75 FEET TRAVEL DISTANCE OF AN EXTINGUISHER PER NFPA 2010.

GPD GROUP
 Professional Corporation
 5705 S. MAIN STREET, SUITE 2531
 PHOENIX, AZ 85044
 P. 602-572-2100 F. 602-572-2101

MOES
 SOUTHWEST GRILL

REV. NO.	DATE	DESCRIPTION
	07/27/18	ISSUE FOR PERMIT

DRAFT

MOES SOUTHWEST GRILL
 3732 US HWY 280
 PHOENIX CITY, AL 36867

ACCESSIBILITY PLAN

	DATE:
BRAND REVIEW	07/27/2018
PERMIT	07/27/2018
BID	--/--/----
CONSTRUCTION	--/--/----
RECORDED	--/--/----
PROJECT MANAGER	DESIGNER
JB	SC

JOB NO.
 2018375.13

A-002