



CONSULTANTS

MECHANICAL ELECTRICAL PLUMBING ENGINEERS  
 WWW.KIENGINEERS.COM  
 LEONIDEN KENTUCKY  
 COLUMBIA, OHIO  
 NEW YORK NEW YORK

**KLH**  
 ENGINEERS  
 175 ALEXANDRIA PKWY SUITE 11  
 RICHMOND, KY 40371  
 606-253-8800 FAX 606-253-8801

KROGER L758

254 EASTBROOKE PKWY,  
 MT WASHINGTON, KY

CLIENT



KROGER  
 COMPANY

1620 Ombly Station Court  
 Louisville, Kentucky 40223

PLUMBING WASTE  
 RISER

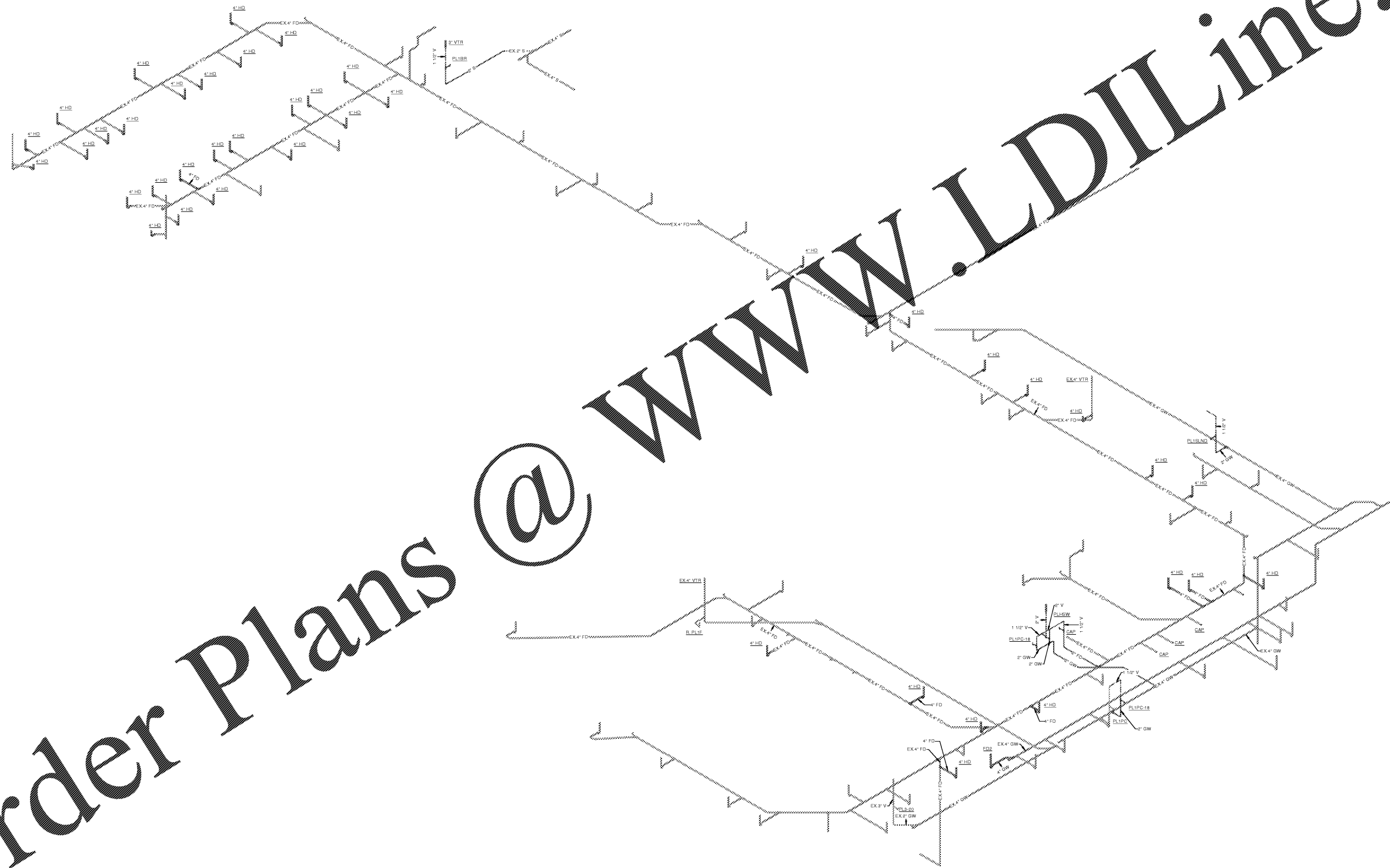
No.	Description	Date

BID ISSUE

© 2016 KLH ENGINEERS  
 ALL RIGHTS RESERVED  
 NO PART OF THIS DOCUMENT IS TO BE REPRODUCED OR TRANSMITTED IN ANY FORM OR BY ANY MEANS WITHOUT THE WRITTEN PERMISSION OF KLH ENGINEERS

P9.1

Project number 20168  
 Date 06/17/2016



WASTE AND VENT ISOMETRIC  
 NOT TO SCALE

2" REFERENCE LINE  
 ARS DS

Order Plans @ WWW.LDILine.com

OWNERSHIP OF INSTRUMENTS: SERVICE: COMPUTER FILE, PLOT, PRINT, REVISIONS: OTHER DOCUMENTS AND INSTRUMENTS PREPARED BY THE CONSULTANT SHALL REMAIN THE PROPERTY OF THE CONSULTANT. THE CONSULTANT SHALL RETAIN ALL COMMON LAW, STATUTORY AND OTHER RESERVED RIGHTS, INCLUDING, WITHOUT LIMITATION, THE COPYRIGHT RIGHTS.