

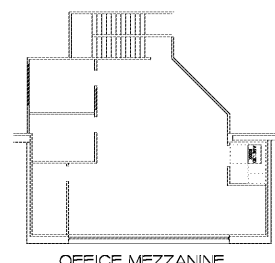
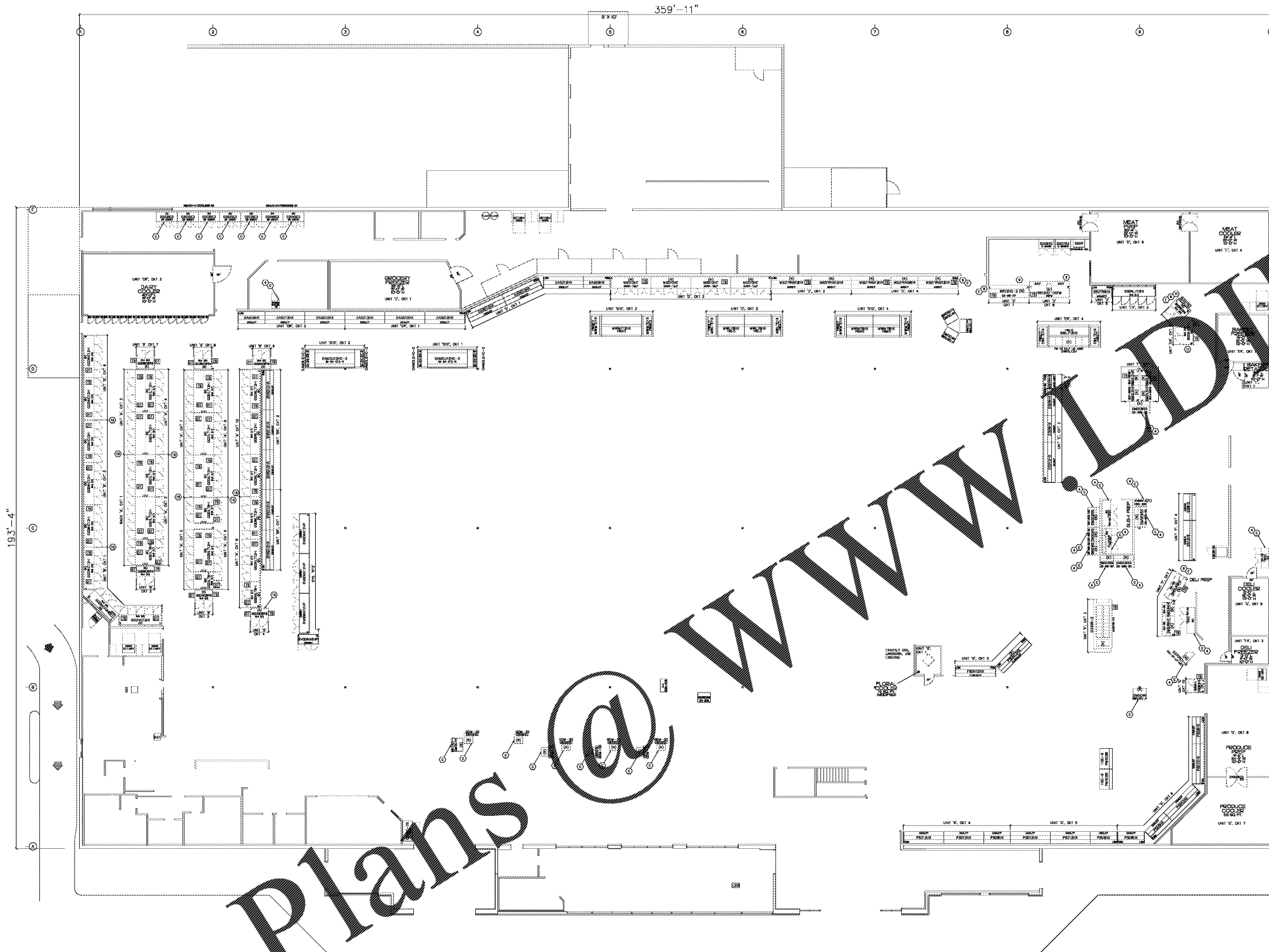
Order Plans

@

WWW

LDLINE

.COM



OFFICE MEZZANINE

- DOOR BIDDING:**
- 1. ALL WORK FOR THIS PROJECT IS TO BE PERFORMED BY THE BIDDING CONTRACTOR.
  - 2. ALL WORK SHALL BE IN ACCORDANCE WITH THE 2015 INTERNATIONAL MECHANICAL ELECTRICAL PLUMBING (IMEP) CODE.
  - 3. ALL WORK SHALL BE IN ACCORDANCE WITH THE 2015 INTERNATIONAL ELECTRICAL CODE (IEC).
  - 4. ALL WORK SHALL BE IN ACCORDANCE WITH THE 2015 INTERNATIONAL PLUMBING AND MECHANICAL CODE (IPMC).
  - 5. ALL WORK SHALL BE IN ACCORDANCE WITH THE 2015 INTERNATIONAL FIRE AND PROTECTION CODE (IFPC).
  - 6. ALL WORK SHALL BE IN ACCORDANCE WITH THE 2015 INTERNATIONAL BUILDING CODE (IBC).
  - 7. ALL WORK SHALL BE IN ACCORDANCE WITH THE 2015 INTERNATIONAL ENERGY CONSERVATION CODE (IECC).
  - 8. ALL WORK SHALL BE IN ACCORDANCE WITH THE 2015 INTERNATIONAL SWEET'S ELECTRICAL SYMBOLS AND NOTATION (SES).
  - 9. ALL WORK SHALL BE IN ACCORDANCE WITH THE 2015 INTERNATIONAL SWEET'S MECHANICAL SYMBOLS AND NOTATION (SMS).
  - 10. ALL WORK SHALL BE IN ACCORDANCE WITH THE 2015 INTERNATIONAL SWEET'S PLUMBING AND MECHANICAL SYMBOLS AND NOTATION (SPMS).
  - 11. ALL WORK SHALL BE IN ACCORDANCE WITH THE 2015 INTERNATIONAL SWEET'S FIRE AND PROTECTION SYMBOLS AND NOTATION (SFPS).
  - 12. ALL WORK SHALL BE IN ACCORDANCE WITH THE 2015 INTERNATIONAL SWEET'S BUILDING SYMBOLS AND NOTATION (SBPS).
  - 13. ALL WORK SHALL BE IN ACCORDANCE WITH THE 2015 INTERNATIONAL SWEET'S ENERGY CONSERVATION SYMBOLS AND NOTATION (SEPS).
  - 14. ALL WORK SHALL BE IN ACCORDANCE WITH THE 2015 INTERNATIONAL SWEET'S ELECTRICAL, MECHANICAL, PLUMBING, AND FIRE AND PROTECTION SYMBOLS AND NOTATION (EMPFPS).
  - 15. ALL WORK SHALL BE IN ACCORDANCE WITH THE 2015 INTERNATIONAL SWEET'S BUILDING, ENERGY CONSERVATION, ELECTRICAL, MECHANICAL, PLUMBING, AND FIRE AND PROTECTION SYMBOLS AND NOTATION (EMPFPSB).

- REFRIGERATION INSTALLER NOTES:**
- 1. REFRIGERATION UNITS SHALL BE INSTALLED IN ACCORDANCE WITH THE MANUFACTURER'S RECOMMENDATIONS.
  - 2. REFRIGERATION UNITS SHALL BE INSTALLED IN ACCORDANCE WITH THE 2015 INTERNATIONAL MECHANICAL ELECTRICAL PLUMBING (IMEP) CODE.
  - 3. REFRIGERATION UNITS SHALL BE INSTALLED IN ACCORDANCE WITH THE 2015 INTERNATIONAL ELECTRICAL CODE (IEC).
  - 4. REFRIGERATION UNITS SHALL BE INSTALLED IN ACCORDANCE WITH THE 2015 INTERNATIONAL PLUMBING AND MECHANICAL CODE (IPMC).
  - 5. REFRIGERATION UNITS SHALL BE INSTALLED IN ACCORDANCE WITH THE 2015 INTERNATIONAL FIRE AND PROTECTION CODE (IFPC).
  - 6. REFRIGERATION UNITS SHALL BE INSTALLED IN ACCORDANCE WITH THE 2015 INTERNATIONAL BUILDING CODE (IBC).
  - 7. REFRIGERATION UNITS SHALL BE INSTALLED IN ACCORDANCE WITH THE 2015 INTERNATIONAL ENERGY CONSERVATION CODE (IECC).
  - 8. REFRIGERATION UNITS SHALL BE INSTALLED IN ACCORDANCE WITH THE 2015 INTERNATIONAL SWEET'S ELECTRICAL SYMBOLS AND NOTATION (SES).
  - 9. REFRIGERATION UNITS SHALL BE INSTALLED IN ACCORDANCE WITH THE 2015 INTERNATIONAL SWEET'S MECHANICAL SYMBOLS AND NOTATION (SMS).
  - 10. REFRIGERATION UNITS SHALL BE INSTALLED IN ACCORDANCE WITH THE 2015 INTERNATIONAL SWEET'S PLUMBING AND MECHANICAL SYMBOLS AND NOTATION (SPMS).
  - 11. REFRIGERATION UNITS SHALL BE INSTALLED IN ACCORDANCE WITH THE 2015 INTERNATIONAL SWEET'S FIRE AND PROTECTION SYMBOLS AND NOTATION (SFPS).
  - 12. REFRIGERATION UNITS SHALL BE INSTALLED IN ACCORDANCE WITH THE 2015 INTERNATIONAL SWEET'S BUILDING SYMBOLS AND NOTATION (SBPS).
  - 13. REFRIGERATION UNITS SHALL BE INSTALLED IN ACCORDANCE WITH THE 2015 INTERNATIONAL SWEET'S ENERGY CONSERVATION SYMBOLS AND NOTATION (SEPS).
  - 14. REFRIGERATION UNITS SHALL BE INSTALLED IN ACCORDANCE WITH THE 2015 INTERNATIONAL SWEET'S ELECTRICAL, MECHANICAL, PLUMBING, AND FIRE AND PROTECTION SYMBOLS AND NOTATION (EMPFPS).
  - 15. REFRIGERATION UNITS SHALL BE INSTALLED IN ACCORDANCE WITH THE 2015 INTERNATIONAL SWEET'S BUILDING, ENERGY CONSERVATION, ELECTRICAL, MECHANICAL, PLUMBING, AND FIRE AND PROTECTION SYMBOLS AND NOTATION (EMPFPSB).

**CONTROL NOTE:**

ALL REFRIGERATION UNITS SHALL BE CONTROLLED BY THE REFRIGERATION CONTROL SYSTEM.

**SHEET INDEX:**

REFRIGERATION EQUIPMENT LAYOUT PLAN  
REFRIGERATION EQUIPMENT SCHEDULE  
REFRIGERATION EQUIPMENT SCHEDULE

**LEGEND:**

TEMPERATURE SENSOR  
REFRIGERATION EQUIPMENT

**GENERAL NOTES:**

1. ALL WORK SHALL BE IN ACCORDANCE WITH THE 2015 INTERNATIONAL MECHANICAL ELECTRICAL PLUMBING (IMEP) CODE.

2. ALL WORK SHALL BE IN ACCORDANCE WITH THE 2015 INTERNATIONAL ELECTRICAL CODE (IEC).

3. ALL WORK SHALL BE IN ACCORDANCE WITH THE 2015 INTERNATIONAL PLUMBING AND MECHANICAL CODE (IPMC).

4. ALL WORK SHALL BE IN ACCORDANCE WITH THE 2015 INTERNATIONAL FIRE AND PROTECTION CODE (IFPC).

5. ALL WORK SHALL BE IN ACCORDANCE WITH THE 2015 INTERNATIONAL BUILDING CODE (IBC).

6. ALL WORK SHALL BE IN ACCORDANCE WITH THE 2015 INTERNATIONAL ENERGY CONSERVATION CODE (IECC).

7. ALL WORK SHALL BE IN ACCORDANCE WITH THE 2015 INTERNATIONAL SWEET'S ELECTRICAL SYMBOLS AND NOTATION (SES).

8. ALL WORK SHALL BE IN ACCORDANCE WITH THE 2015 INTERNATIONAL SWEET'S MECHANICAL SYMBOLS AND NOTATION (SMS).

9. ALL WORK SHALL BE IN ACCORDANCE WITH THE 2015 INTERNATIONAL SWEET'S PLUMBING AND MECHANICAL SYMBOLS AND NOTATION (SPMS).

10. ALL WORK SHALL BE IN ACCORDANCE WITH THE 2015 INTERNATIONAL SWEET'S FIRE AND PROTECTION SYMBOLS AND NOTATION (SFPS).

11. ALL WORK SHALL BE IN ACCORDANCE WITH THE 2015 INTERNATIONAL SWEET'S BUILDING SYMBOLS AND NOTATION (SBPS).

12. ALL WORK SHALL BE IN ACCORDANCE WITH THE 2015 INTERNATIONAL SWEET'S ENERGY CONSERVATION SYMBOLS AND NOTATION (SEPS).

13. ALL WORK SHALL BE IN ACCORDANCE WITH THE 2015 INTERNATIONAL SWEET'S ELECTRICAL, MECHANICAL, PLUMBING, AND FIRE AND PROTECTION SYMBOLS AND NOTATION (EMPFPS).

14. ALL WORK SHALL BE IN ACCORDANCE WITH THE 2015 INTERNATIONAL SWEET'S BUILDING, ENERGY CONSERVATION, ELECTRICAL, MECHANICAL, PLUMBING, AND FIRE AND PROTECTION SYMBOLS AND NOTATION (EMPFPSB).

**Kroger**

GENERAL OFFICE  
FACILITY ENGINEERING

1600 CRAWFORD STATION CT  
LOUISVILLE, KY 40203-4962

PHONE: (502) 425-4962  
FAX: (502) 425-4962

**WITHIN THE WALLS**

**L-758**

234 EASTBROOKE PKWY  
MT WASHINGTON, KY

CLIENT PLAN DATE	5/17/2018
ORIGINAL PLAN DATE	5/17/2018
DRAWN	MATT CUMMINGS
CHECKED	M. ORLJO
PROJECT	
STANDARD FLOORED SCALE	1/8" = 1'-0"
BUILDING STATUS	
TOTAL SHEETING	3414 LF
SALES AREA	55,244 SF
6 OF GROSS BUILDING	78 SF
BASE STORE	73,523 SF
MEZZANINE	
DOCK / UTILITY	3,185 SF
GROSS BUILDING	78,114 SF
REFRIGERATION EQUIPMENT LAYOUT	
IFBID PACKAGE IF	Not Applicable
PROJECT	L-758
PROJECT	R.11