

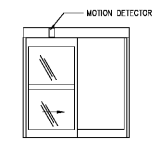
DOOR MATERIAL		HARDWARE SETS	
REFER TO SPECIFICATIONS FOR ADDITIONAL INFORMATION		REFER TO SPECIFICATIONS FOR ADDITIONAL INFORMATION	
A: 603 ALUMINUM AND GLASS		SET #603	SET #17
STEE: STEEL PANEL, SECTIONAL		SET #18	SET #17
M.M.: HOLLOW METAL		SET #19	SET #17
S.M.B.: SPECIAL, NON-POROUS POLYURETHANE		SET #20	SET #17
ABS: ABS PLASTIC DOOR		SET #21	SET #17
PLA: PLASTIC FLEXIBLE PLASTIC DOOR		SET #22	SET #17
ALUM: ALUMINUM		SET #23	SET #17

DOOR SCHEDULE GENERAL NOTES

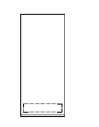
- REFER TO SPECIFICATIONS FOR ADDITIONAL INFORMATION.
- FIELD VERIFY OPENING PRIOR TO FABRICATION OF ALL DOORS.
- PAINT OR REPAINT ALL NEW AND EXISTING INTERIOR HOLLOW METAL DOORS AND FRAMES. DO NOT PAINT ALUMINUM, STAINLESS STEEL, NYLON OR NYLON, AND PLASTIC DOORS.
- FRAMES FOR DOOR SIDE PARTITIONS MUST RETURN TO FACE OF FINISH.
- FOR FINISHES ON ALUMINUM DOORS, REFER TO DOOR SCHEDULE AND SPECIFICATIONS.
- ALL NEW DOORS TO HAVE DOOR STOP PER SPECIFICATIONS.
- FOR FINISHES ON ALUMINUM DOORS, REFER TO DOOR SCHEDULE AND SPECIFICATIONS.
- KICK PLATES TO BE FINISHED AND RETIRED BOTH SIDES SCHEDULED INTERIOR DOORS AND INTERIOR SIDE OF ALL EXTERIOR DOORS.

DOOR SCHEDULE REMARKS NOTES

- NEW DOOR TO MATCH EXISTING OPENING AND FRAME. FIELD VERIFY EXISTING OPENING.
- REPAIR OR REPLACE EXISTING FRAME AS NEEDED. RE-PAINTED EXISTING FRAMES TO REMAIN.
- EXISTING SURFACE MOUNTED AUTO SLIDING DOOR TO BE RE-USE AND RELOCATED. COORDINATE WITH NEW 4" WIDE X 7" HIGH MASONRY DOOR OPENING AND AUTO DOOR INSTALLATION FOR MANUFACTURER PROVIDED BY G.C. AND INSTALLED BY G.C. AND G.C. SHALL PROVIDE CONDUIT FEED AND WIRE TO POINT OF CONNECTION AND SHALL INSURE THAT DOORS ARE FULLY OPERATIONAL. SEE ELECTRICAL.
- EMERGENCY EXIT DOOR NEEDS EMERGENCY EXIT HARDWARE TO BE REFINISHED BY DOOR INSTALLER. ALSO, NEED BORN ALARM WILL SOUND IF OPENED.
- VERIFY WITH ORDER # IF TO PROVIDE NEW WHOLE OVERHEAD DOOR REPLACEMENT OR ONLY TO REPLACE THE LOWER TWO PANELS OF EXISTING SECTIONAL OVERHEAD DOOR.



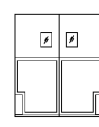
- TEMPERED GLASS
- SURFACE MOUNTED



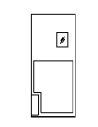
- STAINLESS STEEL KICK PLATE (ON INTERIOR SIDE ONLY)
- INSULATED



- STANDARD AUTOMATIC ROLL-UP SECTIONAL OVERHEAD BASCART DOOR

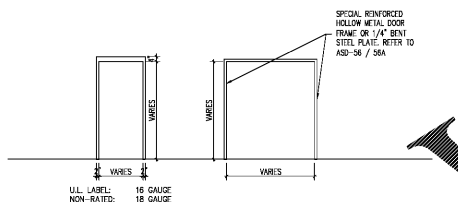


- ABS PLASTIC OR FLEX

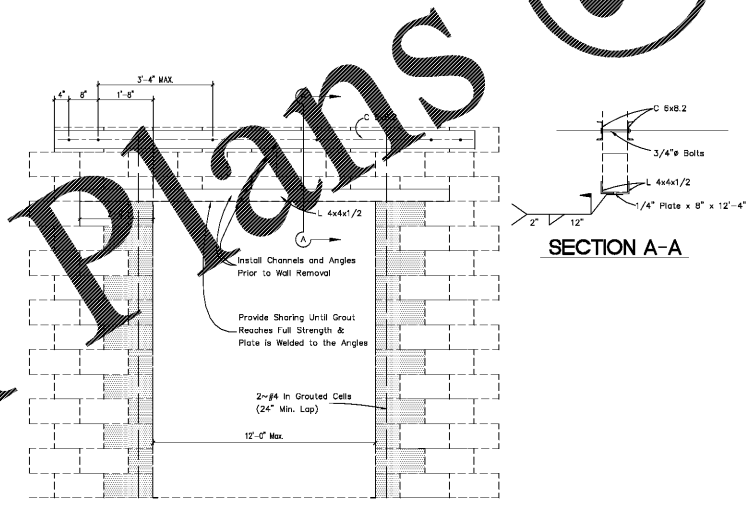


- ABS PLASTIC
- DOUBLE ACTION. VERIFY HEIGHT WITH KROGER ENGINEER BEFORE MANUFACTURING.

DOOR TYPE
SCALE: 1/4"=1'-0"



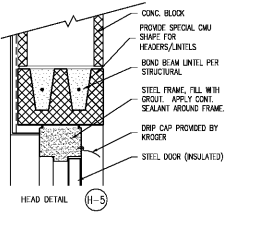
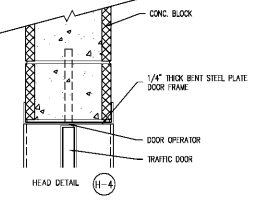
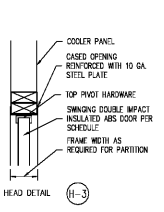
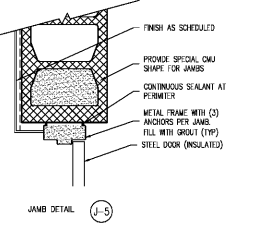
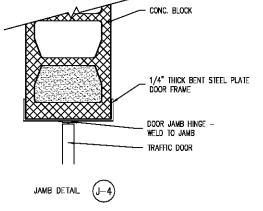
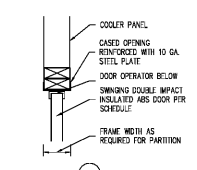
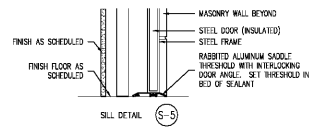
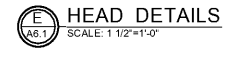
DOOR FRAME TYPES
SCALE: 1/4"=1'-0"



TYPICAL OPENING IN EXISTING MASONRY WALL

TYPICAL SECTION
SCALE: 3/4"=1'-0"

L758 DOOR SCHEDULE																			
DOOR NO.	FROM	LOCATION	HARDWARE SETS	DOOR LEAF INFORMATION				FRAME INFORMATION				DETAILS		REMARKS	DOOR NO.				
				MATERIAL	TYPE	LOCKER	FOUR	VELOCOR	RESPONSIBILITY	PROVIDE/INSTALL	FRAME SIZE W X H	MATERIAL	SEP. TO			TYPE	RESPONSIBILITY	PROVIDE/INSTALL	HEAD
101	RM 1015	ENTRANCE	SET #17	ALUM	L	1	1	1	1	1	1	1	1	1	1	1	1	1	1
102	RM 1015	ENTRANCE	SET #17	ALUM	L	1	1	1	1	1	1	1	1	1	1	1	1	1	1
103	RM 1015	ENTRANCE	SET #17	ALUM	L	1	1	1	1	1	1	1	1	1	1	1	1	1	1
104	RM 1015	ENTRANCE	SET #17	ALUM	L	1	1	1	1	1	1	1	1	1	1	1	1	1	1
105	RM 1015	ENTRANCE	SET #17	ALUM	L	1	1	1	1	1	1	1	1	1	1	1	1	1	1
106	RM 1015	ENTRANCE	SET #17	ALUM	L	1	1	1	1	1	1	1	1	1	1	1	1	1	1
107	RM 1015	ENTRANCE	SET #17	ALUM	L	1	1	1	1	1	1	1	1	1	1	1	1	1	1
108	RM 1015	ENTRANCE	SET #17	ALUM	L	1	1	1	1	1	1	1	1	1	1	1	1	1	1
109	RM 1015	ENTRANCE	SET #17	ALUM	L	1	1	1	1	1	1	1	1	1	1	1	1	1	1
110	RM 1015	ENTRANCE	SET #17	ALUM	L	1	1	1	1	1	1	1	1	1	1	1	1	1	1
111	RM 1015	ENTRANCE	SET #17	ALUM	L	1	1	1	1	1	1	1	1	1	1	1	1	1	1
112	RM 1015	ENTRANCE	SET #17	ALUM	L	1	1	1	1	1	1	1	1	1	1	1	1	1	1
113	RM 1015	ENTRANCE	SET #17	ALUM	L	1	1	1	1	1	1	1	1	1	1	1	1	1	1
114	RM 1015	ENTRANCE	SET #17	ALUM	L	1	1	1	1	1	1	1	1	1	1	1	1	1	1
115	RM 1015	ENTRANCE	SET #17	ALUM	L	1	1	1	1	1	1	1	1	1	1	1	1	1	1
116	RM 1015	ENTRANCE	SET #17	ALUM	L	1	1	1	1	1	1	1	1	1	1	1	1	1	1
117	RM 1015	ENTRANCE	SET #17	ALUM	L	1	1	1	1	1	1	1	1	1	1	1	1	1	1
118	RM 1015	ENTRANCE	SET #17	ALUM	L	1	1	1	1	1	1	1	1	1	1	1	1	1	1
119	RM 1015	ENTRANCE	SET #17	ALUM	L	1	1	1	1	1	1	1	1	1	1	1	1	1	1
120	RM 1015	ENTRANCE	SET #17	ALUM	L	1	1	1	1	1	1	1	1	1	1	1	1	1	1
121	RM 1015	ENTRANCE	SET #17	ALUM	L	1	1	1	1	1	1	1	1	1	1	1	1	1	1
122	RM 1015	ENTRANCE	SET #17	ALUM	L	1	1	1	1	1	1	1	1	1	1	1	1	1	1
123	RM 1015	ENTRANCE	SET #17	ALUM	L	1	1	1	1	1	1	1	1	1	1	1	1	1	1
124	RM 1015	ENTRANCE	SET #17	ALUM	L	1	1	1	1	1	1	1	1	1	1	1	1	1	1
125	RM 1015	ENTRANCE	SET #17	ALUM	L	1	1	1	1	1	1	1	1	1	1	1	1	1	1
126	RM 1015	ENTRANCE	SET #17	ALUM	L	1	1	1	1	1	1	1	1	1	1	1	1	1	1
127	RM 1015	ENTRANCE	SET #17	ALUM	L	1	1	1	1	1	1	1	1	1	1	1	1	1	1
128	RM 1015	ENTRANCE	SET #17	ALUM	L	1	1	1	1	1	1	1	1	1	1	1	1	1	1
129	RM 1015	ENTRANCE	SET #17	ALUM	L	1	1	1	1	1	1	1	1	1	1	1	1	1	1
130	RM 1015	ENTRANCE	SET #17	ALUM	L	1	1	1	1	1	1	1	1	1	1	1	1	1	1
131	RM 1015	ENTRANCE	SET #17	ALUM	L	1	1	1	1	1	1	1	1	1	1	1	1	1	1
132	RM 1015	ENTRANCE	SET #17	ALUM	L	1	1	1	1	1	1	1	1	1	1	1	1	1	1
133	RM 1015	ENTRANCE	SET #17	ALUM	L	1	1	1	1	1	1	1	1	1	1	1	1	1	1
134	RM 1015	ENTRANCE	SET #17	ALUM	L	1	1	1	1	1	1	1	1	1	1	1	1	1	1
135	RM 1015	ENTRANCE	SET #17	ALUM	L	1	1	1	1	1	1	1	1	1	1	1	1	1	1
136	RM 1015	ENTRANCE	SET #17	ALUM	L	1	1	1	1	1	1	1	1	1	1	1	1	1	1
137	RM 1015	ENTRANCE	SET #17	ALUM	L	1	1	1	1	1	1	1	1	1	1	1	1	1	1
138	RM 1015	ENTRANCE	SET #17	ALUM	L	1	1	1	1	1	1	1	1	1	1	1	1	1	1
139	RM 1015	ENTRANCE	SET #17	ALUM	L	1	1	1	1	1	1	1	1	1	1	1	1	1	1
140	RM 1015	ENTRANCE	SET #17	ALUM	L	1	1	1	1	1	1	1	1	1	1	1	1	1	1
141	RM 1015	ENTRANCE	SET #17	ALUM	L	1	1	1	1	1	1	1	1	1	1	1	1	1	1
142	RM 1015	ENTRANCE	SET #17	ALUM	L	1	1	1	1	1	1	1	1	1	1	1	1	1	1
143	RM 1015	ENTRANCE	SET #17	ALUM	L	1	1	1	1	1	1	1	1	1	1	1	1	1	1
144	RM 1015	ENTRANCE	SET #17	ALUM	L	1	1	1	1	1	1	1	1	1	1	1	1	1	1
145	RM 1015	ENTRANCE	SET #17	ALUM	L	1	1	1	1	1	1	1	1	1	1	1	1	1	1
146	RM 1015	ENTRANCE	SET #17	ALUM	L	1	1	1	1	1	1	1	1	1	1	1	1	1	1
147	RM 1015	ENTRANCE	SET #17	ALUM	L	1	1	1	1	1	1	1	1	1	1	1	1	1	1
148	RM 1015	ENTRANCE	SET #17	ALUM	L	1	1	1	1	1	1	1	1	1	1	1	1	1	1
149	RM 1015	ENTRANCE	SET #17	ALUM	L	1	1	1	1	1	1	1	1	1	1	1	1	1	1
150	RM 1015	ENTRANCE	SET #17	ALUM	L	1	1	1	1	1	1	1	1	1	1	1	1	1	1



CONSULTANTS

PROJECT NAME

KROGER STORE L-758

234 EAST BROOKLE PARKWAY
MT. WASHINGTON, KY

CLIENT



KROGER COMPANY

1920 Drimby Station Court
Louisville, Kentucky 40223

DOOR AND WINDOW SCHEDULES, DETAILS, ELEVATIONS
SCALE VARIES

No.	Description	Date

REVIEW SET/PERMIT SET

Project Number: 18-KR-05-758
Date: AUGUST 17, 2018

A6.1.1

Order Plans @

WWW.LDLINE.COM