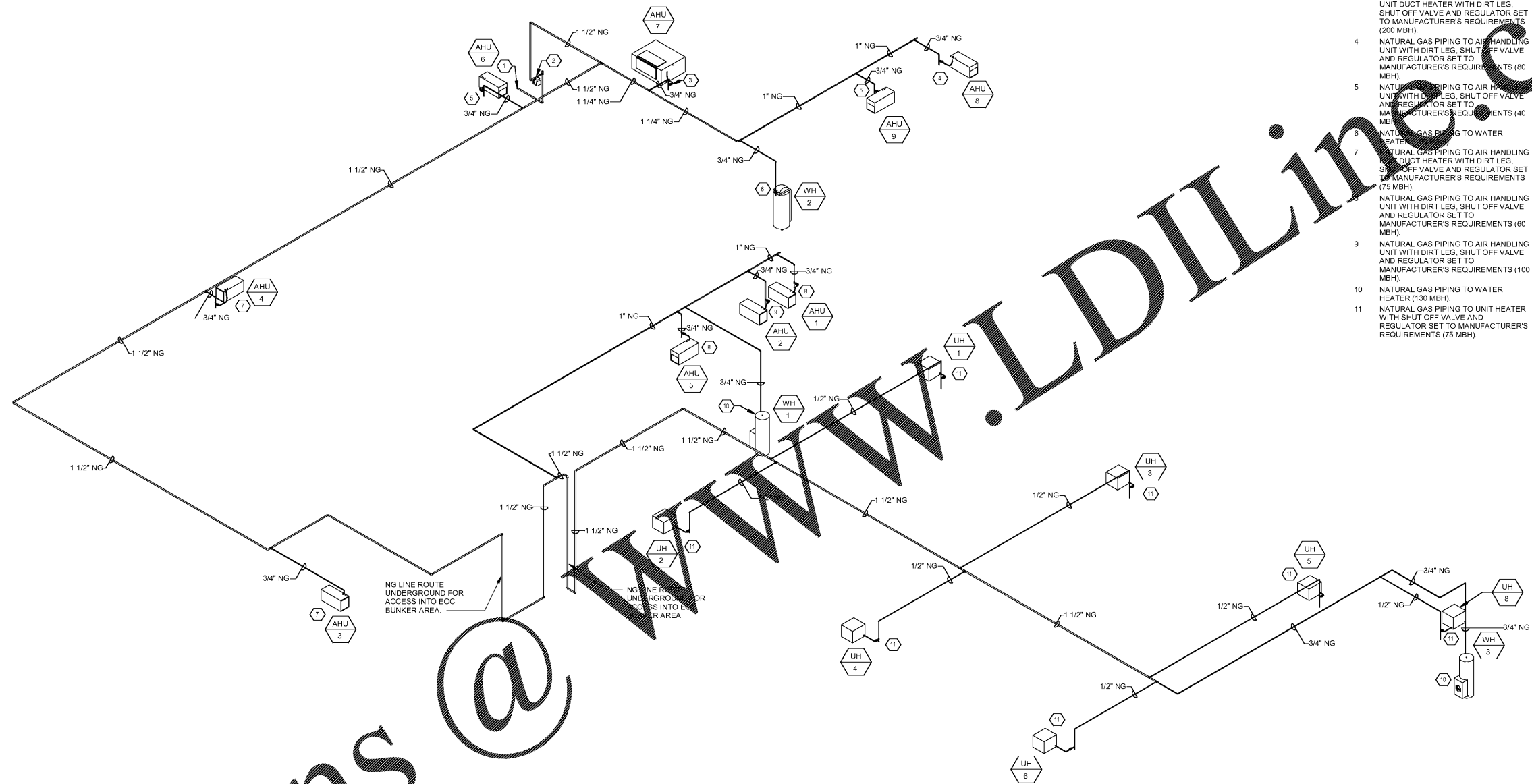
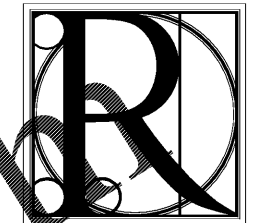


Order Plans



- KEYED NOTES:**
- NATURAL GAS PIPING BELOW GRADE BY LOCAL UTILITY COMPANY. REFER TO CIVIL DRAWINGS FOR CONTINUATION.
  - NATURAL GAS METER BY LOCAL UTILITY COMPANY. PIPE SIZING BASED ON A LOAD OF 1.714 MBH AT 2 PSI AND A DEVELOPED LENGTH OF 750'-0".
  - NATURAL GAS PIPING TO AIR HANDLING UNIT DUCT HEATER WITH DIRT LEG. SHUT OFF VALVE AND REGULATOR SET TO MANUFACTURER'S REQUIREMENTS (200 MBH).
  - NATURAL GAS PIPING TO AIR HANDLING UNIT WITH DIRT LEG. SHUT OFF VALVE AND REGULATOR SET TO MANUFACTURER'S REQUIREMENTS (80 MBH).
  - NATURAL GAS PIPING TO AIR HANDLING UNIT WITH DIRT LEG. SHUT OFF VALVE AND REGULATOR SET TO MANUFACTURER'S REQUIREMENTS (40 MBH).
  - NATURAL GAS PIPING TO WATER HEATER.
  - NATURAL GAS PIPING TO AIR HANDLING UNIT DUCT HEATER WITH DIRT LEG. SHUT OFF VALVE AND REGULATOR SET TO MANUFACTURER'S REQUIREMENTS (75 MBH).
  - NATURAL GAS PIPING TO AIR HANDLING UNIT WITH DIRT LEG. SHUT OFF VALVE AND REGULATOR SET TO MANUFACTURER'S REQUIREMENTS (60 MBH).
  - NATURAL GAS PIPING TO AIR HANDLING UNIT WITH DIRT LEG. SHUT OFF VALVE AND REGULATOR SET TO MANUFACTURER'S REQUIREMENTS (100 MBH).
  - NATURAL GAS PIPING TO WATER HEATER (130 MBH).
  - NATURAL GAS PIPING TO UNIT HEATER WITH SHUT OFF VALVE AND REGULATOR SET TO MANUFACTURER'S REQUIREMENTS (75 MBH).

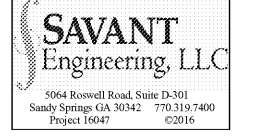
1 NATURAL GAS ISOMETRIC - PLUMBING  
P-2.3 NOT TO SCALE



**DESIGN WORKS**

FANNIN COUNTY:  
722 Black Dog Trail  
P.O. Box 639  
Blue Ridge, GA 30513  
Phone 706.374.4304

COBB COUNTY:  
1480 Shiloh Road NW  
Suite #300  
Kennesaw, GA 30144  
Phone 770.790.3655  
Fax 770.790.3650



NATURAL GAS ISOMETRIC - PLUMBING  
FANNIN CO. PUBLIC SAFETY COMPLEX  
BLUE RIDGE, GA 30513

TITLE:	PROJECT:
ISSUE:	REVISIONS:



DRAWN BY/ CHECKED BY:	DATE:
Author	04.19.2017

PROJECT NO.	SHEET NO.:
1517	P-2.3