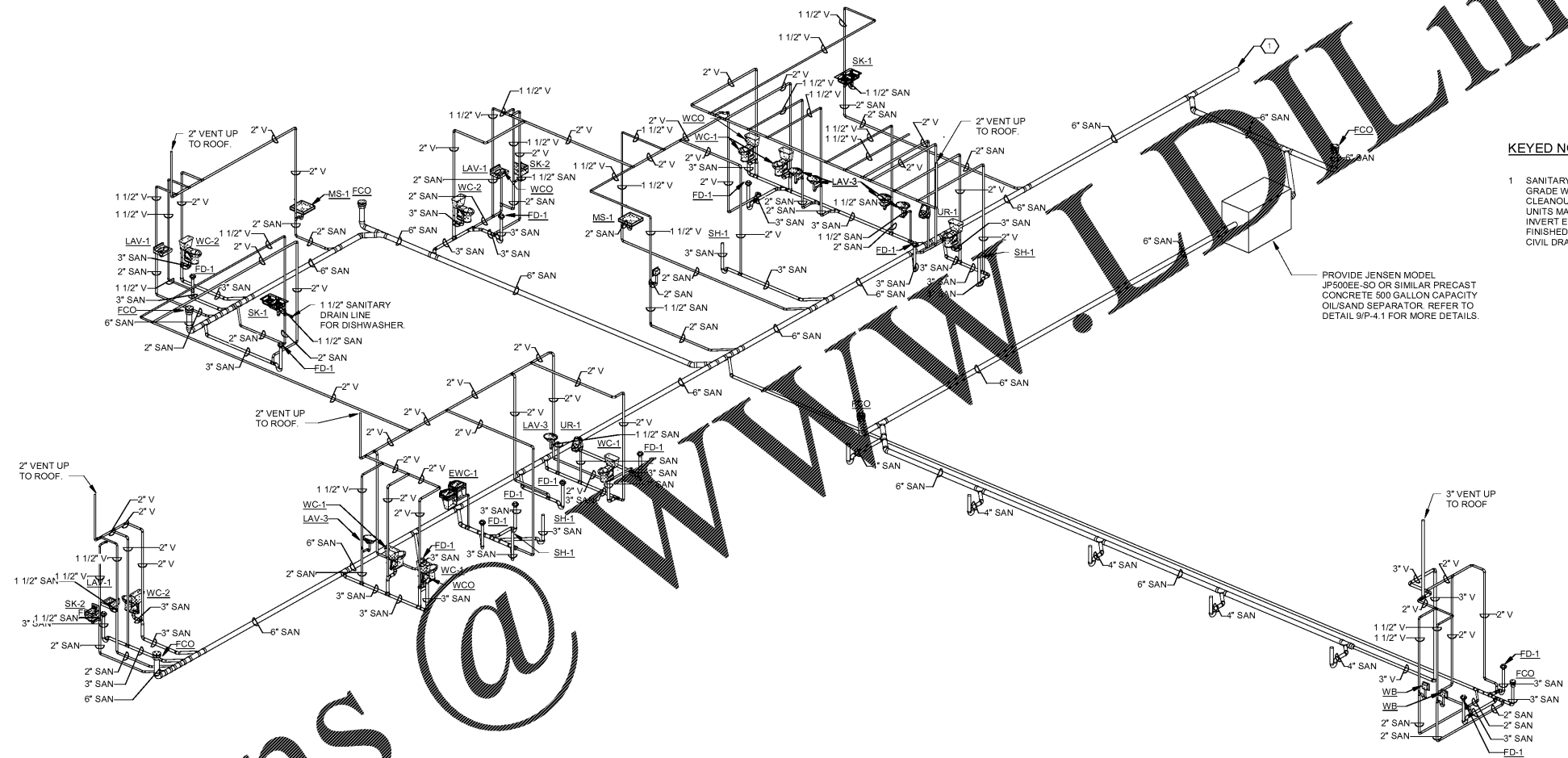


Order Plans

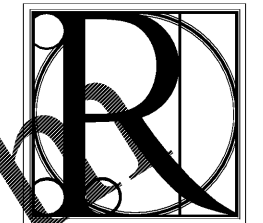


KEYED NOTES: (X)

- SANITARY WASTE PIPING BELOW GRADE WITH 2-WAY EXTERNAL CLEANOUT (180° DRAINAGE FIXTURE UNITS MAXIMUM FUTURE LOAD WITH INVERT ELEVATION AT 72" BELOW FINISHED FLOOR LEVEL). REFER TO CIVIL DRAWINGS FOR CONTINUATION.

PROVIDE JENSEN MODEL JFS500EE-SO OR SIMILAR PRECAST CONCRETE 500 GALLON CAPACITY OIL/SAND SEPARATOR. REFER TO DETAIL 9/P-4.1 FOR MORE DETAILS.

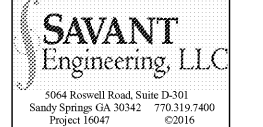
1 SANITARY AND VENT ISOMETRIC - PLUMBING  
P-2.2 NOT TO SCALE



DESIGN WORKS

FANNIN COUNTY:  
722 Black Dog Trail  
P.O. Box 639  
Blue Ridge, GA 30513  
Phone 706.374.4304

COBB COUNTY:  
1480 Shiloh Road NW  
Suite #300  
Kennesaw, GA 30144  
Phone 770.790.3655  
Fax 770.790.3650



SANITARY AND WASTE ISOMETRIC - PLUMBING  
FANNIN CO. PUBLIC SAFETY COMPLEX  
BLUE RIDGE, GA 30513

TITLE:	PROJECT:
ISSUE:	REVISIONS:



DRAWN BY/ CHECKED BY:	DATE:
RHR/RGV	04.19.2017

PROJECT NO.	SHEET NO.:
1517	P-2.2