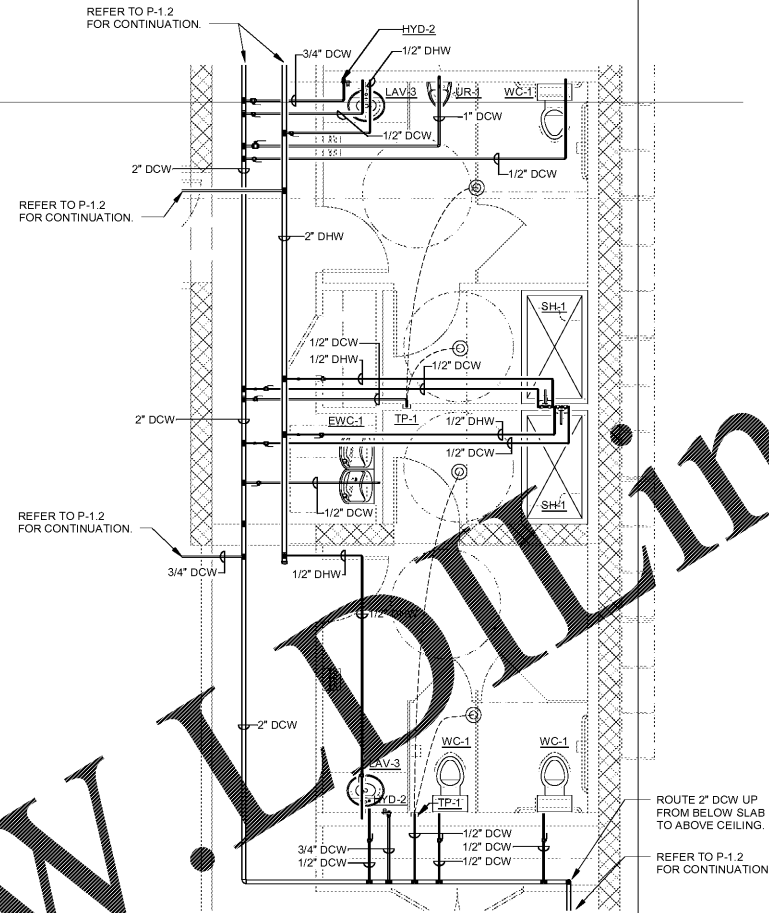
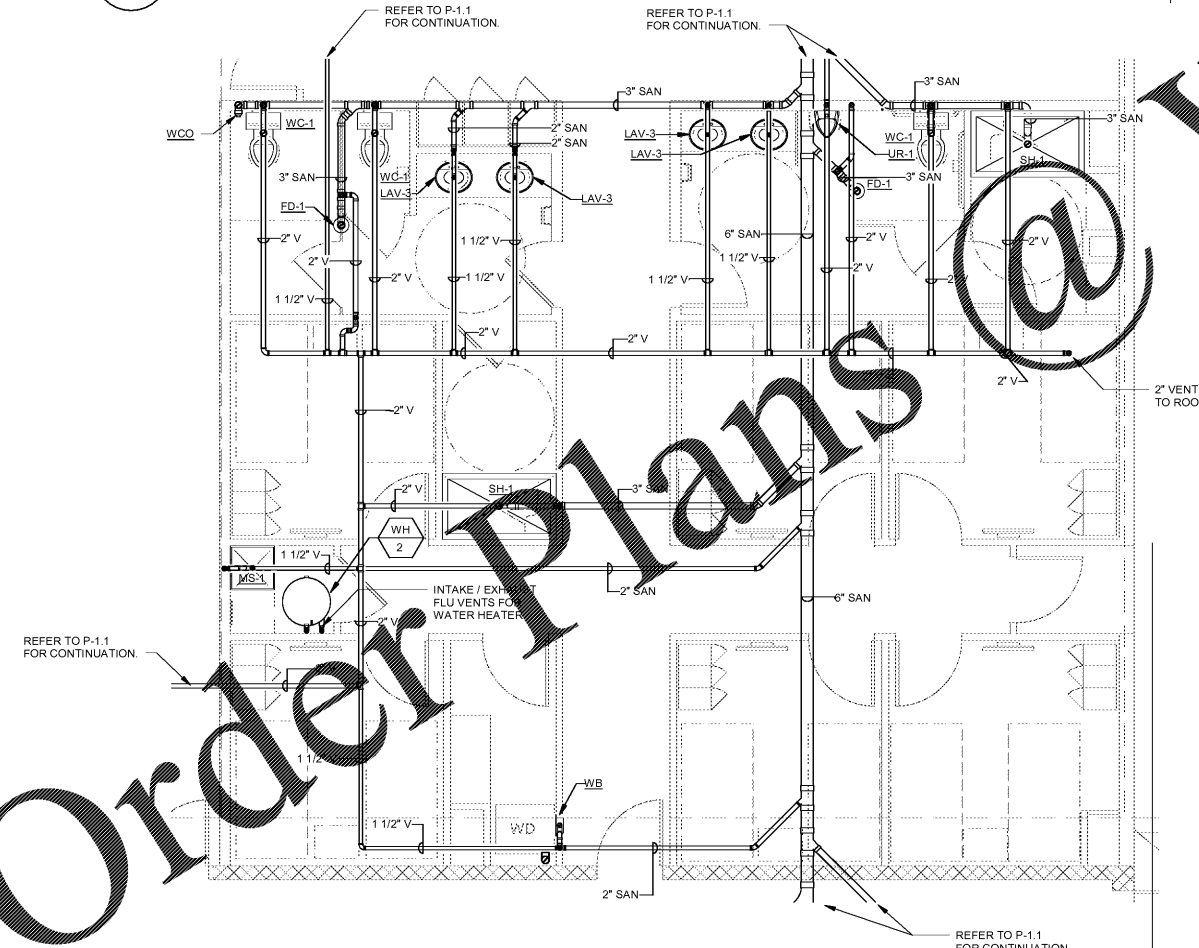


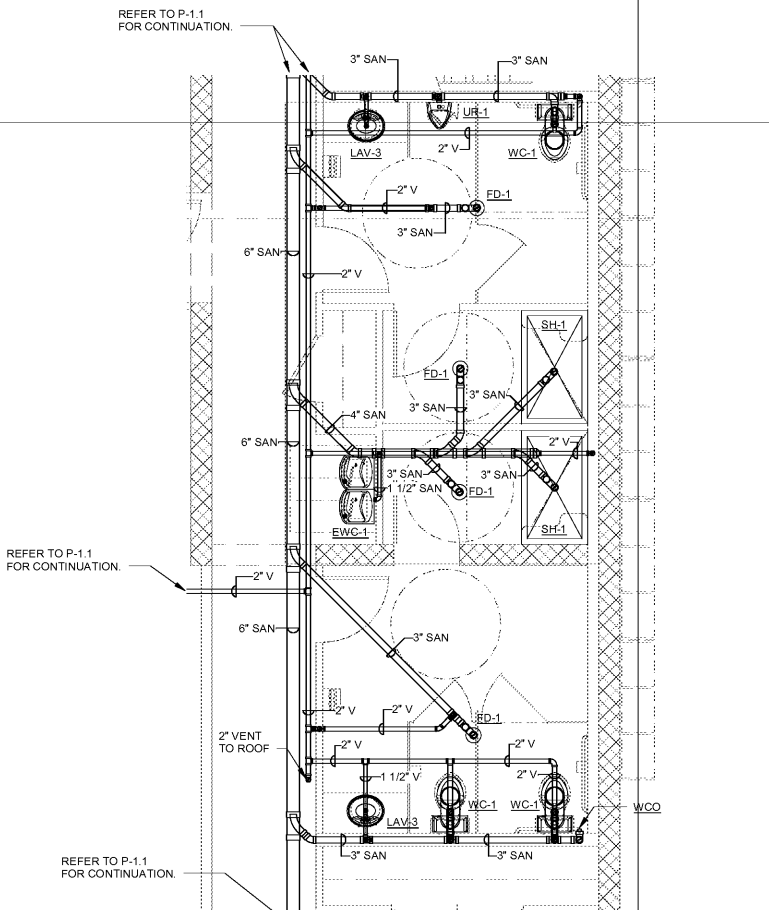
1 FIRE LIVING AREA ENLARGED FLOOR PLAN DOMESTIC WATER - PLUMBING
P-1.4 1/4" = 1'-0"



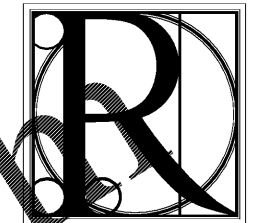
2 911 AND EOC RESTROOM ENLARGED FLOOR PLAN DOMESTIC WATER - PLUMBING
P-1.4 1/4" = 1'-0"



4 FIRE LIVING AREA ENLARGED FLOOR PLAN SANITARY - PLUMBING
P-1.4 1/4" = 1'-0"



3 911 AND EOC RESTROOM ENLARGED FLOOR PLAN SANITARY - PLUMBING
P-1.4 1/4" = 1'-0"



DESIGN WORKS

FANNIN COUNTY:
722 Black Dog Trail
P.O. Box 639
Blue Ridge, GA 30513
Phone 706.374.4304

COBB COUNTY:
1480 Shiloh Road NW
Suite #300
Kennesaw, GA 30144
Phone 770.790.3655
Fax 770.790.3650

SAVANT
Engineering, LLC

5064 Roswell Road, Suite D-301
Sandy Springs, GA 30342 770.319.7400
Project 16047 ©2016

ENLARGED FLOOR PLANS -
PLUMBING
FANNIN CO. PUBLIC SAFETY COMPLEX
BLUE RIDGE, GA 30513

TITLE:	PROJECT:
ISSUE:	REVISIONS:



DRAWN BY/ CHECKED BY:	DATE:
RHR/RGV	04.19.2017
PROJECT NO.	SHEET NO.:
1517	P-1.4