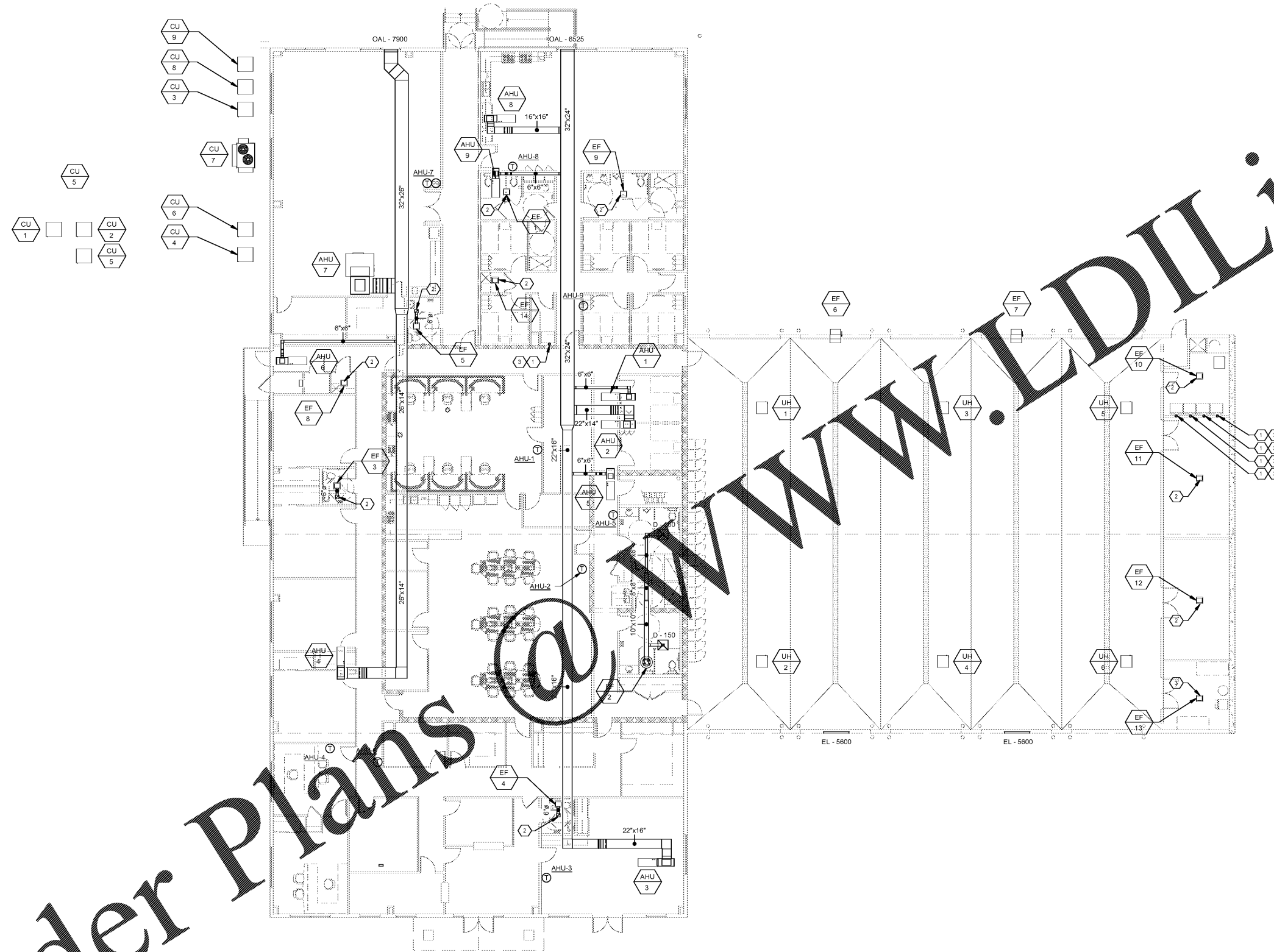
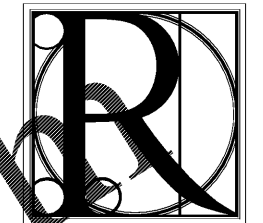


Order Plans



- H.V.A.C. SHEET NOTES:
1. DRY PIPING DUCT
 2. ROUTE 8" GALVANIZED STEEL EXHAUST DUCT UP TO ROOF AND TERMINATE WITH ROOF CAP. MAINTAIN 10'-0" MINIMUM DISTANCE FROM ALL OUTSIDE AIR INTAKES.
 3. ROUTE 6" DIA. GALVANIZED STEEL EXHAUST DUCT UP TO ROOF AND TERMINATE WITH ROOF CAP. MAINTAIN 10'-0" MINIMUM DISTANCE FROM ALL OUTSIDE AIR INTAKES.

1 FLOOR PLAN - H.V.A.C. - EXHAUST, OUTSIDE AIR AND CONTROLS
 M-1.2 3/32" = 1'-0"



DESIGN WORKS

FANNIN COUNTY:
 722 Black Dog Trail
 P.O. Box 639
 Blue Ridge, GA 30513
 Phone 706.374.4304

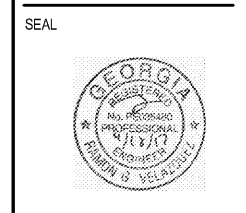
COBB COUNTY:
 1480 Shiloh Road NW
 Suite #300
 Kennesaw, GA 30144
 Phone 770.790.3655
 Fax 770.790.3650

SAVANT
 Engineering, LLC

5064 Roswell Road, Suite D-301
 Sandy Springs, GA 30342 770.319.7400
 Project 16047 ©2016

TITLE: H.V.A.C. FLOOR PLAN - EXHAUST, OUTSIDE AIR & CONTROLS
 PROJECT: FANNIN CO. PUBLIC SAFETY COMPLEX
 BLUE RIDGE, GA 30513

ISSUE:	REVISIONS:



DRAWN BY/ CHECKED BY:	DATE:
MSC/RGV	04.19.2017

PROJECT NO.	SHEET NO.:
1517	M-1.2