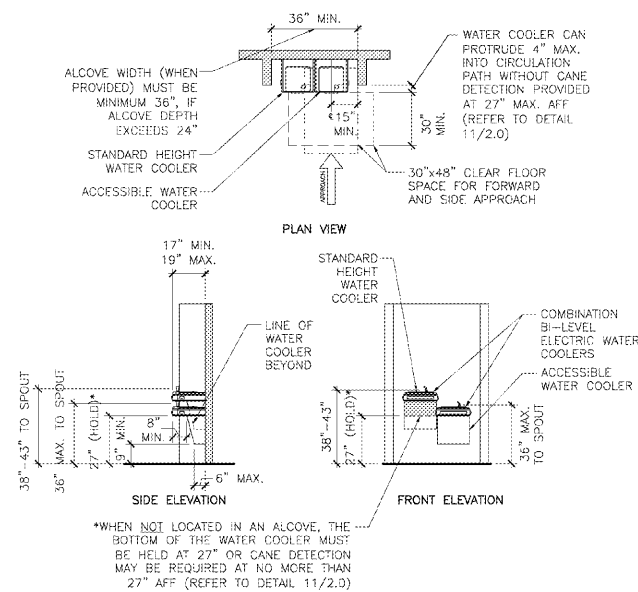




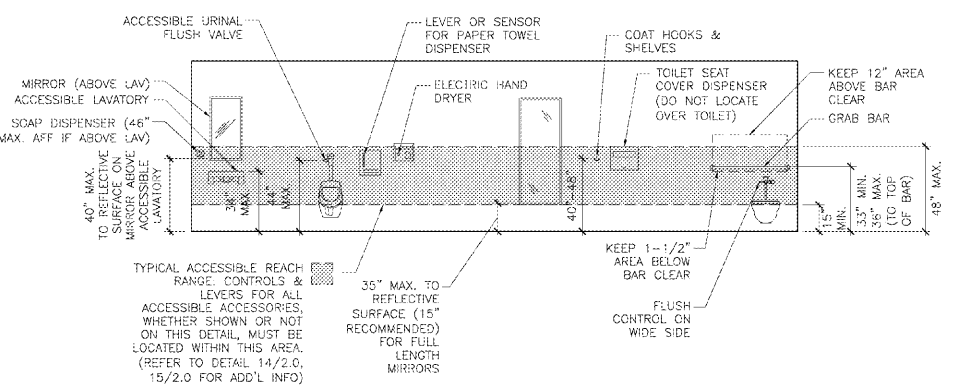
DESIGN WORKS

FANNIN COUNTY: 722 Black Dog Trail P.O. Box 639 Blue Ridge, GA 30513 Phone 706.374.4304

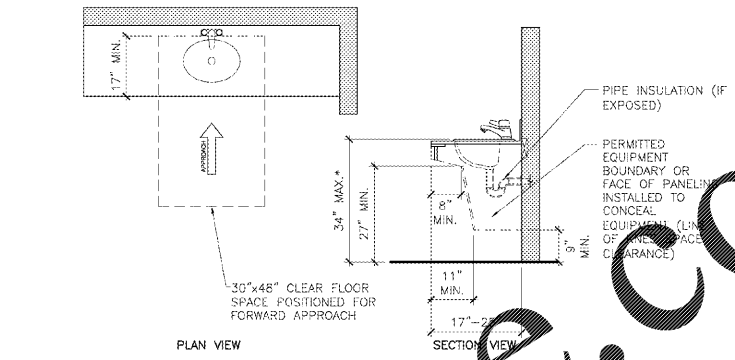
COBB COUNTY: 1480 Shiloh Road NW Suite #300 Kennesaw, GA 30144 Phone 770.790.3655 Fax 770.790.3650



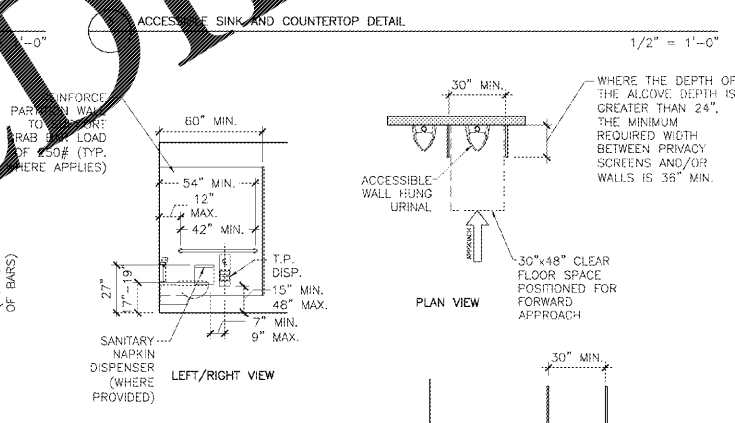
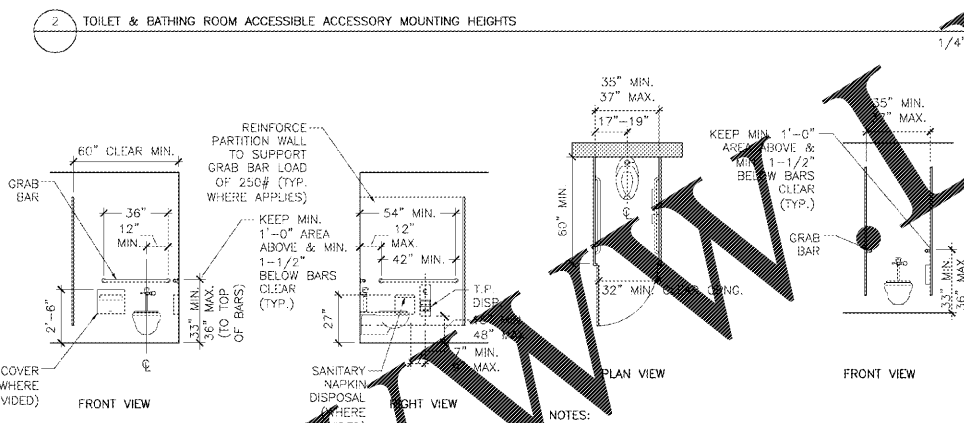
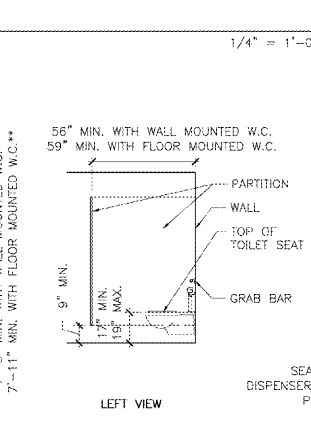
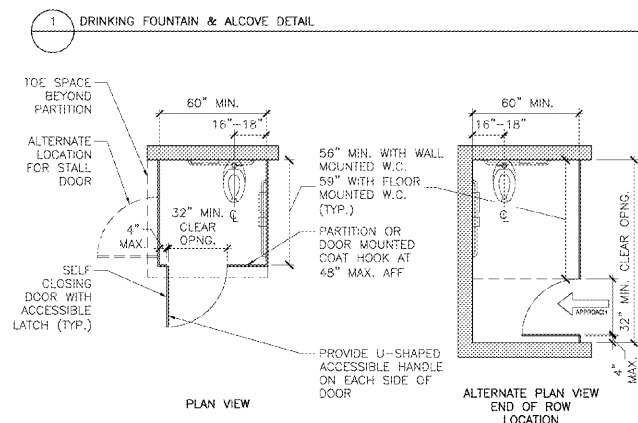
NOTES: 1. THE CLEAR FLOOR SPACE REQUIRED FOR FORWARD APPROACH SHALL BE CENTERED ON THE UNIT AND SHALL INCLUDE KNEE AND TOE CLEARANCE (REFER TO DETAILS 9/2.0, 10/2.0).



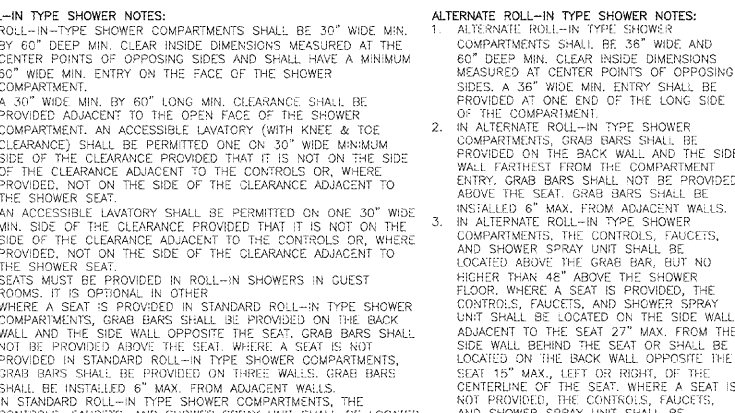
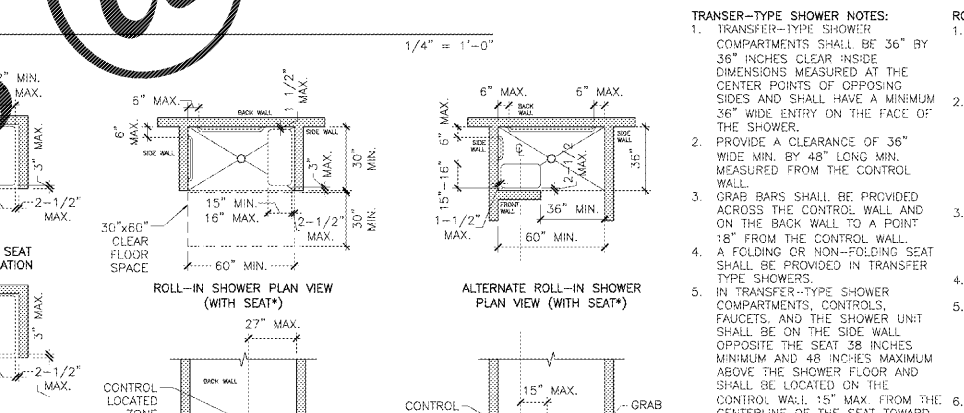
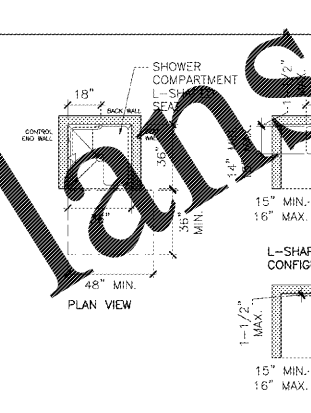
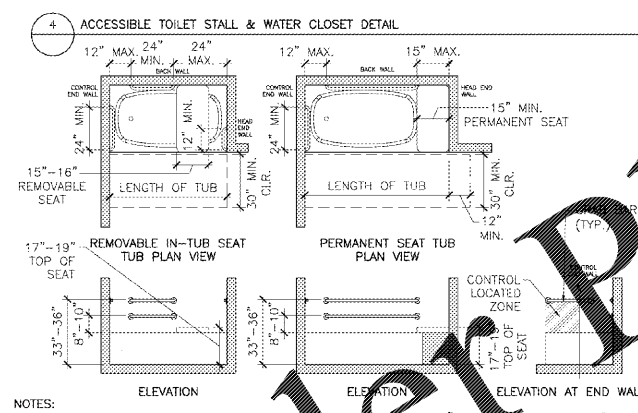
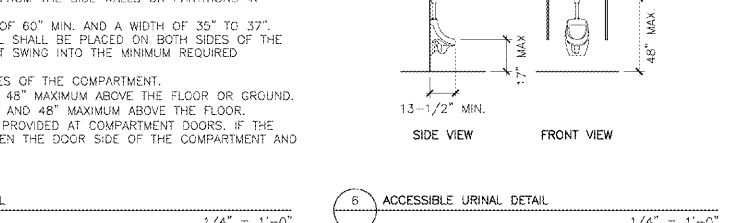
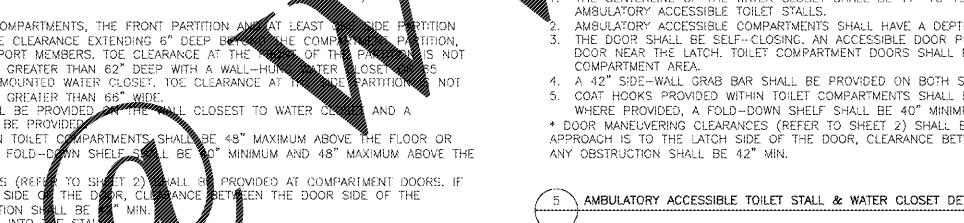
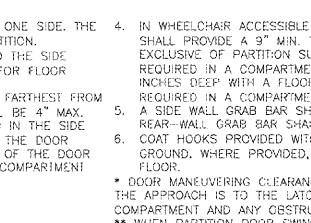
NOTES: 1. THE CLEAR FLOOR SPACE AT ACCESSORIES SHALL BE 30" MINIMUM BY 48" MINIMUM. UNLESS OTHERWISE SPECIFIED, THE CLEAR FLOOR SPACE MAY BE POSITIONED FOR EITHER FORWARD OR PARALLEL APPROACH TO AN ELEMENT.



NOTES: 1. A CLEAR FLOOR SPACE, POSITIONED FOR EITHER FORWARD OR PARALLEL APPROACH AND TOE CLEARANCE SHALL BE PROVIDED (REFER TO DETAILS 9/2.0, 10/2.0).



NOTES: 1. THE WATER CLOSET SHALL BE POSITIONED WITH A WALL OR PARTITION TO THE REAR AND ONE SIDE. THE CENTERLINE OF THE WATER CLOSET SHALL BE 17" TO 19" FROM THE SIDE WALL OR PARTITION.



NOTES: 1. CLEARANCE IN FRONT OF BATHTUBS SHALL EXTEND THE LENGTH OF TUBS. THERE SHALL BE 30" WIDE MIN. ACCESSIBLE LAVATORY (WITH KNEE AND TOE CLEARANCE) SHALL BE PROVIDED AT THE CONTROL END OF THE CLEARANCE.

GENERAL SHOWER NOTES: 1. A SHOWER SPRAY UNIT WITH A HOSE 59" LONG MIN. THAT CAN BE USED BOTH AS A FIXED-POSITION SHOWER HEAD AND AS A HAND-HELD SHOWER SHALL BE PROVIDED (WITH THE CONTROLS LOCATED AT 48" MAXIMUM AFF).

TRANSFER-TYPE SHOWER NOTES: 1. TRANSFER-TYPE SHOWER COMPARTMENTS SHALL BE 36" BY 36" INCHES CLEAR INSIDE DIMENSIONS MEASURED AT THE CENTER POINTS OF OPPOSING SIDES AND SHALL HAVE A MINIMUM 36" WIDE ENTRY ON THE FACE OF THE SHOWER.

ROLL-IN TYPE SHOWER NOTES: 1. ROLL-IN-TYPE SHOWER COMPARTMENTS SHALL BE 30" WIDE MIN. BY 60" DEEP MIN. CLEAR INSIDE DIMENSIONS MEASURED AT THE CENTER POINTS OF OPPOSING SIDES AND SHALL HAVE A MINIMUM 60" WIDE MIN. ENTRY ON THE FACE OF THE SHOWER COMPARTMENT.

7 ACCESSIBLE BATHTUB DETAIL 1/4" = 1'-0"

8 ACCESSIBLE TRANSFER TYPE SHOWER COMPARTMENT DETAIL 1/4" = 1'-0"

9 ACCESSIBLE GUEST ROOM ROLL-IN TYPE SHOWER WITH SEAT COMPARTMENT DETAIL 1/4" = 1'-0"

10 ACCESSIBLE SHOWER NOTES NO SCALE

ACCESSIBLE PLUMBING DETAILS

FANNIN CO. PUBLIC SAFETY COMPLEX 964 WINDY RIDGE ROAD BLUE RIDGE, GA 30513

Table with columns: TITLE, PROJECT, ISSUE, REVISIONS



Table with columns: DRAWN BY, DATE, K.W., 4.19.2017, PROJECT NO., SHEET NO., 1517, A-8.2

Copyright © 2017 R Design Works