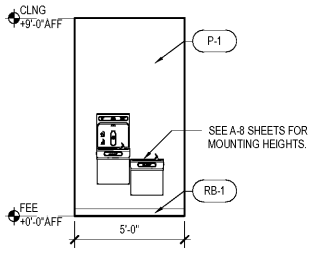
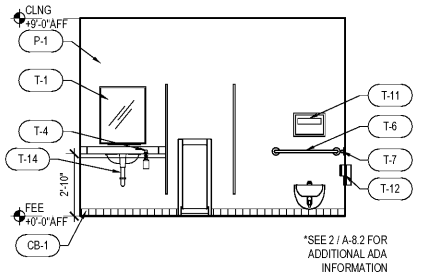


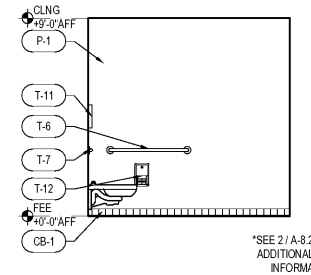
A 1/4" = 1'-0" ENLARGED FLOOR PLAN



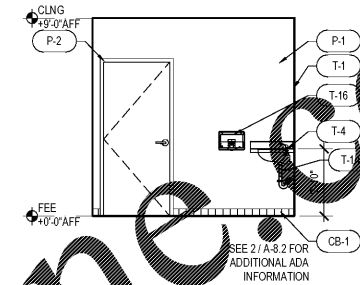
B 1/4" = 1'-0" DRINKING FOUNTAIN



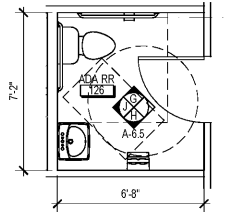
C 1/4" = 1'-0" MEN'S RESTROOM ELEV.



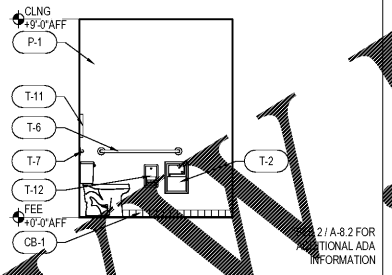
D 1/4" = 1'-0" MEN'S RESTROOM ELEV.



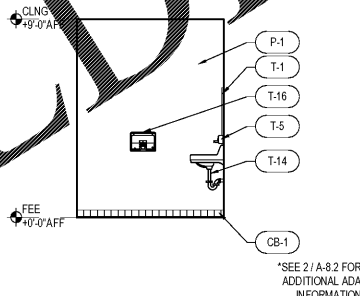
J 1/4" = 1'-0" MEN'S RESTROOM ELEV.



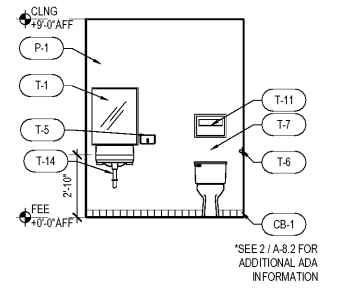
F 1/4" = 1'-0" ENLARGED FLOOR PLAN



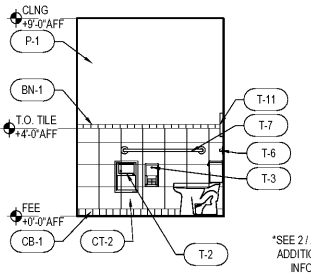
G 1/4" = 1'-0" ADA RESTROOM ELEV.



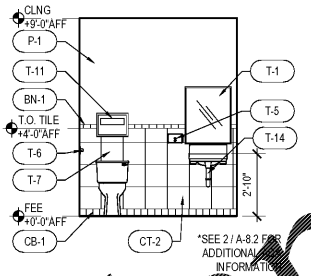
H 1/4" = 1'-0" ADA RESTROOM ELEVATION



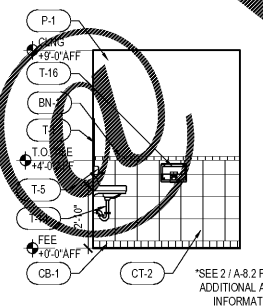
J 1/4" = 1'-0" ADA RESTROOM ELEVATION



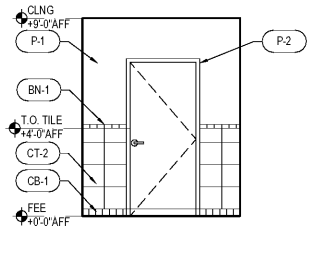
K 1/4" = 1'-0" ADA R.R. RM #144 ELEV.



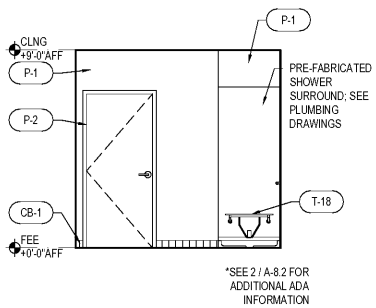
L 1/4" = 1'-0" ADA R.R. RM #144 ELEV.



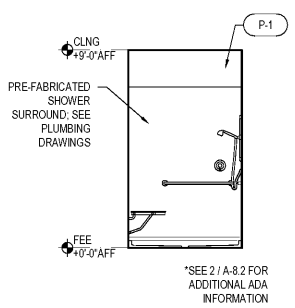
M 1/4" = 1'-0" ADA R.R. RM #144 ELEV.



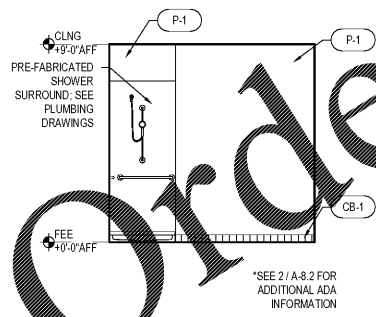
N 1/4" = 1'-0" ADA R.R. RM #144 ELEV.



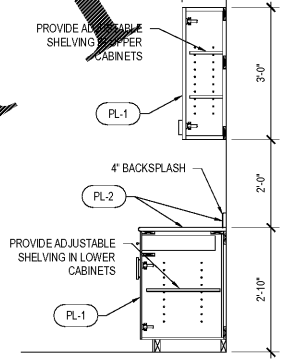
P 1/4" = 1'-0" SHOWER (TYP.)



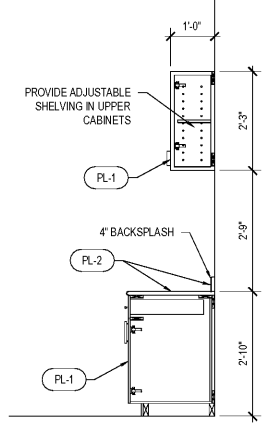
Q 1/4" = 1'-0" SHOWER (TYP.)



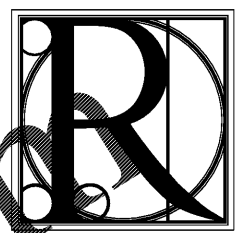
R 1/4" = 1'-0" SHOWER (TYP.)



S 1/2" = 1'-0" KITCHEN MILLWORK SECT.



T 1/2" = 1'-0" KITCHEN MILLWORK SECT.



DESIGN WORKS

FANNIN COUNTY:
722 Black Dog Trail
P.O. Box 639
Blue Ridge, GA 30513
Phone 706.374.4304

COBB COUNTY:
1480 Shiloh Road NW
Suite #300
Kennesaw, GA 30144
Phone 770.790.3655
Fax 770.790.3650

INTERIOR ELEVATIONS

FANNIN CO. PUBLIC SAFETY COMPLEX
964 WINDY RIDGE ROAD
BLUE RIDGE, GA 30513

TITLE:

PROJECT:

ISSUE:

REVISIONS:

SEAL



DRAWN BY:

DATE:

K.W.

4.19.2017

PROJECT NO.

SHEET NO.:

1517

A-6.5

Copyright © 2017
R Design Works