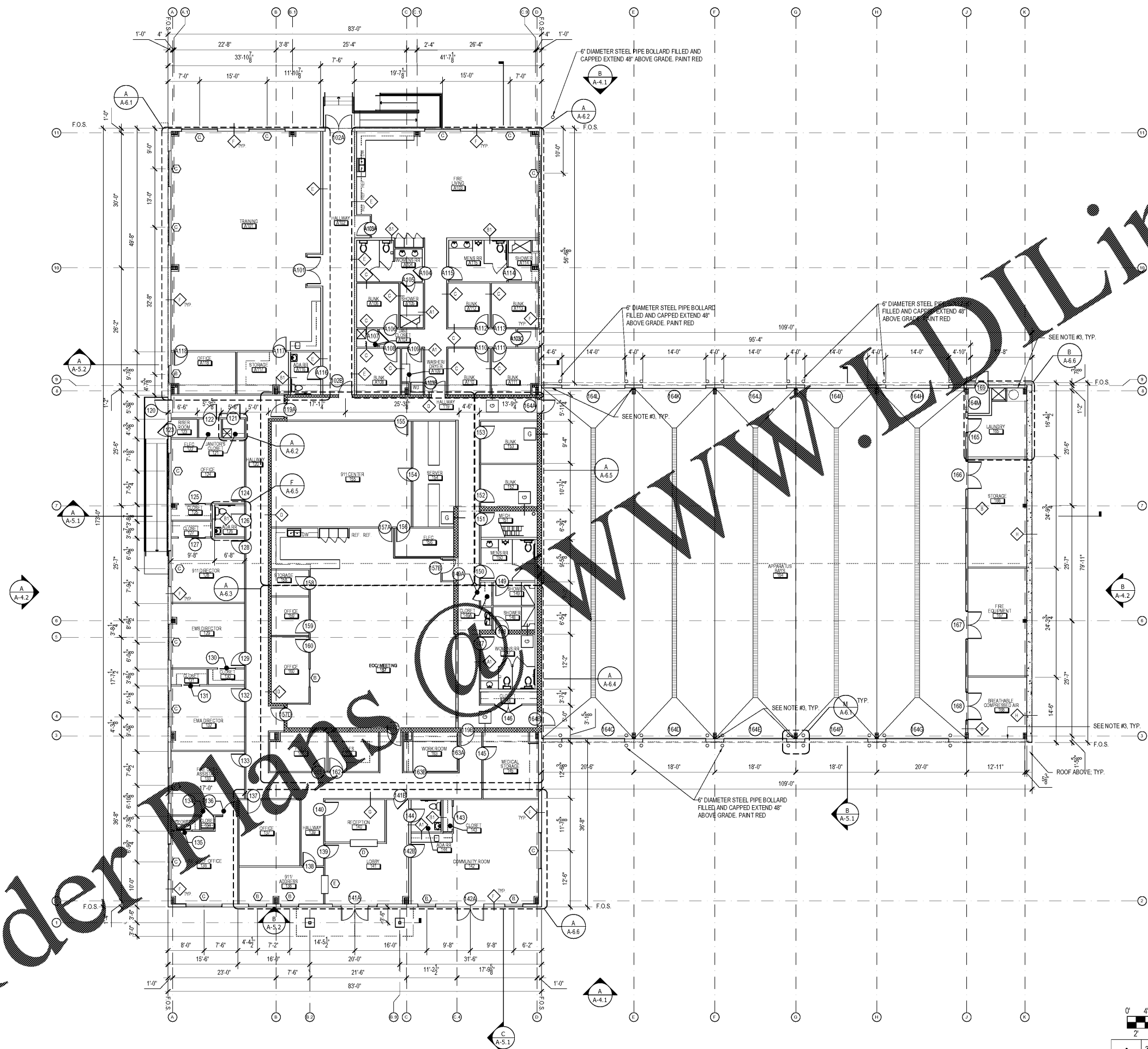


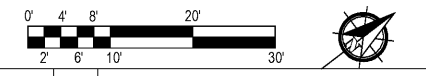
Order Plans



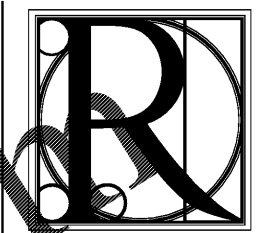
- NOTES:**
1. ALL INTERIOR PARTITION WALLS TO BE TYPE 'A' UNLESS NOTED OTHERWISE.
  2. PROVIDE NON-COMBUSTIBLE BLOCKING AT ALL HUNG CABINETS, SHELVING, TV'S, ACCESSORIES, AND BULLETIN BOARDS.
  3. PROVIDE METAL LINER PANELS TO FIRST GIRT LINE +/- 7'-4" AFF AT ALL INTERIOR EXPOSED INSULATION AREAS AT PERM APPARATUS BAY AND SUPPORT AREAS.

- WALL TYPE SCHEDULE:**
- A TYPICAL INTERIOR PARTITION WALL 3 1/2" METAL STUD W/ 5/8" GWB EA SIDE
  - A1 PROVIDE MOISTURE RESISTANT 5/8" CEMENT BOARD; COORDINATE HEIGHT W/ INTERIOR ELEVATIONS.
  - B 6" MTL STUD WALL W/ 5/8" GWB EA SIDE
  - B1 PROVIDE MOISTURE RESISTANT 5/8" CEMENT BOARD; COORDINATE HEIGHT W/ INTERIOR ELEVATIONS.
  - C 1-HR RATED INTERIOR PARTITION WALL U.L 263 3 1/2" MTL STUDS, 5/8" FIRE RATED GWB, EXTEND WALLS TO B/DECK/RATED CEILING.
  - D 8" CMU WALL, GROUTED SOLID W/ REINFORCING AS INDICATED IN STRUCTURAL DRAWINGS. PROVIDE 5/8" GWB OVER 7/8" HAT CHANNELS @ 24" O.C. EA SIDE OF WALL
  - E 1-HR RATED INTERIOR PARTITION WALL U.L 263 6" MTL STUDS, 5/8" FIRE RATED GWB, EXTEND WALLS TO B/DECK/RATED CEILING.
  - F 7/8" HAT CHANNELS @ 24" O.C. HORIZONTAL W/ 5/8" GWB. TYPICAL AT ALL INTERIOR PERM WALLS UNLESS NOTED OTHERWISE.
  - G 12" CMU WALL, GROUTED SOLID W/ REINFORCING AS INDICATED IN STRUCTURAL DRAWINGS. PROVIDE 5/8" GWB OVER 7/8" HAT CHANNEL @ 24" O.C. EA SIDE OF WALL EXCEPT AT APPARATUS AND APPARATUS BAY.
  - H 12" REINFORCED CONCRETE WALL.

NEW PLAN LEGEND	
SYM	DESCRIPTION
	CMU WALL 12" OR 8" - SEE WALL SCHEDULE AND STRUCTURAL FOR REINFORCEMENT
	WINDOW TAG SEE SCHEDULE ON SHEET A-7.2
	NEW DOOR AND FRAME SEE DOOR SCHEDULE FOR ADDITIONAL INFORMATION ON SHEET A-7.2
	WALL TYPE SEE SCHEDULE A-1.1.



A 3/32" 1'-0" FLOOR PLAN



**DESIGN WORKS**

FANNIN COUNTY:  
722 Black Dog Trail  
P.O. Box 639  
Blue Ridge, GA 30513  
Phone 706.374.4304

COBB COUNTY:  
1480 Shiloh Road NW  
Suite #300  
Kennesaw, GA 30144  
Phone 770.790.3655  
Fax 770.790.3650

FLOOR PLAN

FANNIN CO. PUBLIC SAFETY COMPLEX  
964 WINDY RIDGE ROAD  
BLUE RIDGE, GA 30513

TITLE:

PROJECT:

ISSUE:

REVISIONS:

SEAL



DRAWN BY:

DATE:

K.W.

4.19.2017

PROJECT NO.

SHEET NO.:

1517

A-1.1

Copyright © 2017  
R Design Works