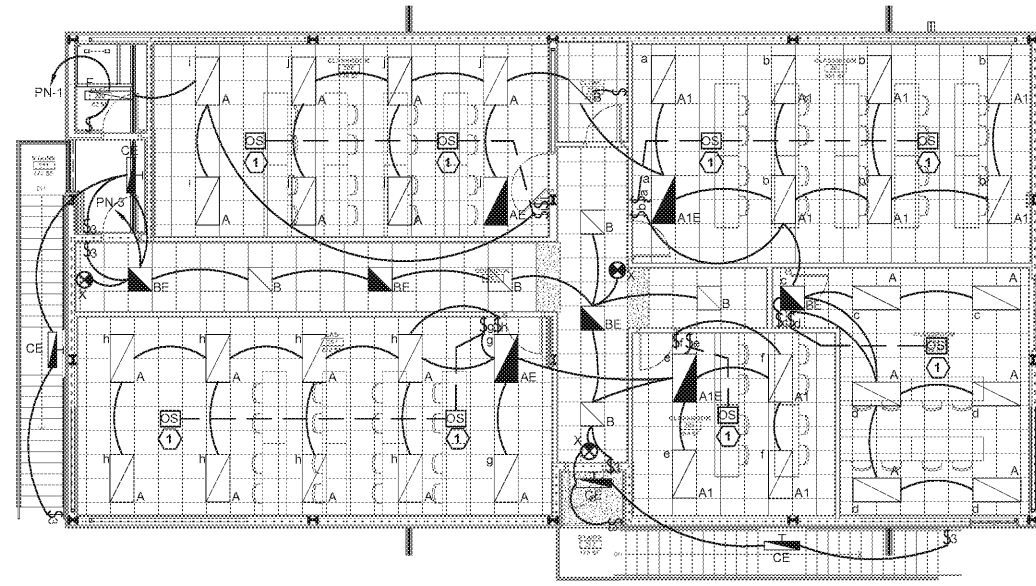
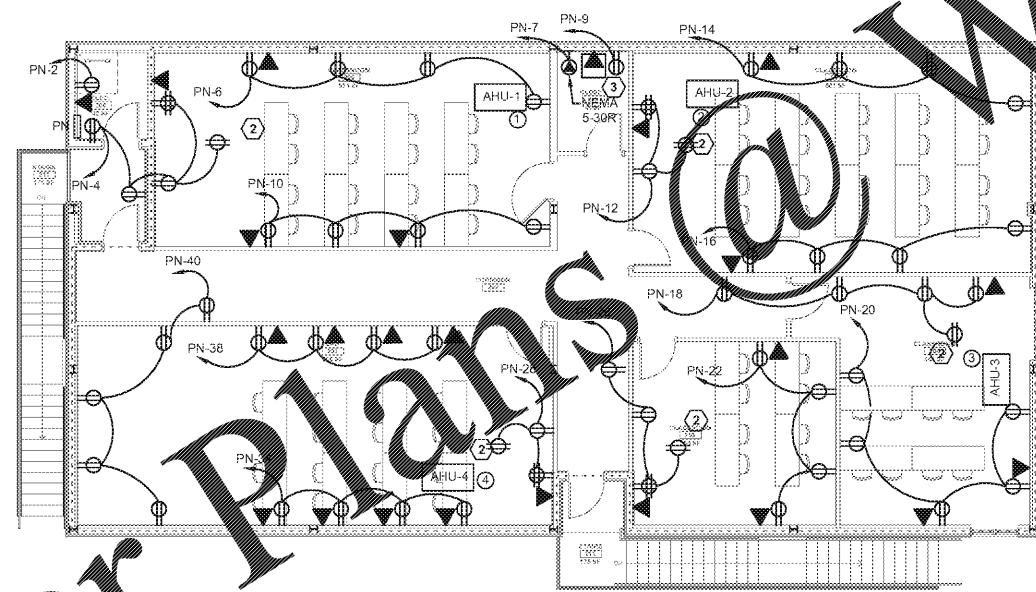


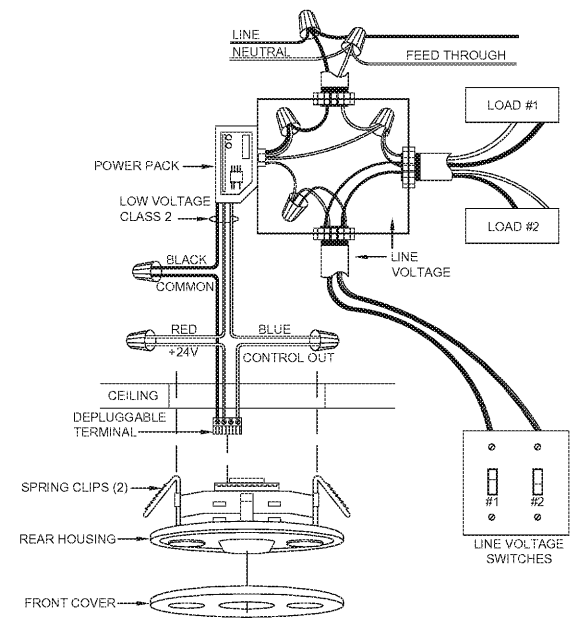
REV.	DATE	DESCRIPTION
A	2017-11-03	10% CONCEPT DESIGN
B	2017-12-22	25% SUBMITTAL
C	2018-02-23	50% SUBMITTAL
D	2018-04-13	FOR CONSTRUCTION
E	2018-06-01	FOR CONSTRUCTION



1 FLOOR PLAN LEVEL 2 - LIGHTING  
E-401 1/8" = 1'-0"  
0 5 10 25 FT



2 FLOOR PLAN LEVEL 2 - POWER AND SYSTEMS  
E-401 1/8" = 1'-0"  
0 5 10 25 FT



3 CEILING OCCUPANCY SENSOR, WIRING DETAIL, TYP.  
E-401 NOT TO SCALE

**LIGHTING NOTES:**

1. LIGHT FIXTURE LOCATIONS AREA APPROXIMATE. SEE ARCHITECTURAL DRAWINGS FOR EXACT POSITIONING AND MOUNTING HEIGHTS. LIGHT FIXTURES SUFFIXED WITH 'E' ARE EMERGENCY LIGHT FIXTURE AND SHALL BE EQUIPPED WITH BATTERY BACKUP BALLASTS.

**POWER NOTES:**

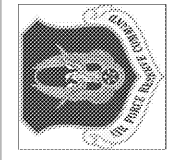
1. ALL RECEPTACLES INDICATED ARE NEMA 5-20R UNLESS NOTED OTHERWISE.
2. ALL ELECTRICAL FEEDERS FOR 20 AMP CIRCUITS SHALL BE ONE RUN OF 1/2" CONDUIT, (1)#12, (1)#12 NEUTRAL, (1)#12 GROUND UNLESS NOTED OTHERWISE.
3. BRANCH CONDUCTOR RUNS GREATER THAN 75 LINEAR FEET SHALL BE UPSIZED TO #10 WIRE UNLESS NOTED OTHERWISE.
4. SEE ELECTRICAL EQUIPMENT SCHEDULE OF SHEET E-60 FOR INDIVIDUAL EQUIPMENT FEEDER REQUIREMENTS.
5. CONTRACTOR SHALL COORDINATE ALL MECHANICAL AND PLUMBING EQUIPMENT ELECTRICAL REQUIREMENTS AT LOCATIONS WITH OTHER TRADES PRIOR TO BEGINNING WORK.

**KEY NOTES:**

1. PROVIDE OCCUPANCY SENSORS AND POWER PACKS AS NECESSARY. TO MEET CLASSROOM CONTROL REQUIREMENTS. OCCUPANCY SENSORS SHALL PROVIDE CONTROL OF ALL CLASSROOM LIGHTS. MANUAL SWITCH STATES SHALL PROVIDE ON/OFF OPERATION OF DESIGNATED LIGHTS DURING "ON" PERIODS FROM POWER PACK SENSORS. SEE DETAIL 3/E-401.
2. WIRING MOUNTING DEVICE PROVIDE SINGLE GANG BOX INSTALLED IN CEILING FOR SWITCH DEVICE. COORDINATE FINAL LOCATION WITH CONTRACTING OFFICER PRIOR TO INSTALLATION.
3. CONTRACTOR SHALL PROVIDE PATCH PANEL TO RECEIVE NEW CAT 6 DATA CABLES, SIZED ADEQUATELY FOR INDICATED QUANTITY. DOBBINS ARB SHALL PROVIDE 19" RACK TO HOUSE PATCH PANEL. DOBBINS ARB WILL PROVIDE RACK MOUNTED I/O TO RECEIVE FIBER. DOBBINS ARB SHALL MAKE FINAL TERMINATIONS FOR FIBER AND CAT 6 AT RACK. PROVIDE 2"X10"X1/4" COPPER GROUND BAR, WALL MOUNTED ADJACENT TO SERVER RACK. PROVIDE #6 BARE COPPER CONDUCTOR TO SERVICE GROUND BAR. TERMINATE CAT 6 CABLES PER T-568B STANDARDS AT WALL JACKS AND PATCH PANEL IN DATA RACK. CONNECTIONS SHALL BE TESTED FOR SHORTS AND OPENS. PROVIDE A RACK-INSTALLED LIU FOR FIBER OPTIC CONNECTION. FIBER OPTIC MULTI-MODE RISER CABLE SHALL BE 6-STRAND WITH ST CONNECTIONS AT BOTH ENDS.



CIVIL ENGINEERING  
94th AIRLIFT WING  
DOBBINS AIR RESERVE BASE, GEORGIA



CROFT  
Croft & Associates  
1400 Blue Springs Road  
Suite 200  
Kennesaw, GA 30144  
770.529.7744 (p)  
770.529.7746 (f)  
www.croftaa.com



REPAIR FACILITY & ADDITION  
BUILDING 747  
FGMB 08-0027  
DOBBINS AIR RESERVE BASE, GEORGIA  
NEW LEVEL TWO FLOOR PLAN - ELECTRICAL  
PROJECT CONTACT:  
ROBERT ERNEST 758-425-5122  
rob.ernest@croftaa.com

PROJECT	LOCATION	DRAWING	CONTACT
2017-238			
PROJ. OFFICER	J. MORGAN		
DESIGNED	R. LESTER		
CHECKED	J. MORGAN		
DATE	2017-02-23		
DRAWING	44	OF	45

E-401