

CONSTRUCTION		
REV.	DATE	DESCRIPTION
A	2017-11-03	10% CONCEPT DESIGN
B	2017-12-22	25% SUBMITTAL
C	2018-02-23	50% SUBMITTAL
D	2018-04-13	FOR CONSTRUCTION
E	2018-06-01	FOR CONSTRUCTION

LIGHTING NOTES:

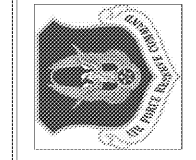
1. LIGHT FIXTURE LOCATIONS AREA APPROXIMATE. SEE ARCHITECTURAL DRAWINGS FOR EXACT POSITIONING AND MOUNTING HEIGHTS.
2. LIGHT FIXTURES SUFFIXED WITH 'E' ARE EMERGENCY LIGHT FIXTURE AND SHALL BE EQUIPPED WITH BATTERY BACKUP BALLASTS.
3. ALL LIGHTING CIRCUITS SHALL BE ROUTED THROUGH LIGHTING CONTROL PANELS UNLESS NOTED OTHERWISE. SEE LIGHTING CONTROL DETAILS.

KEY NOTES:

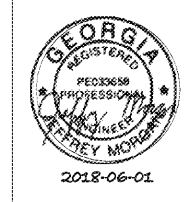
1. ROUTE CIRCUITING FROM EXISTING PANEL E TO NEW PANEL PN. SEE ONE-LINE DIAGRAM ON SHEET E-601 FOR DETAILS.
2. RE-ROUTE EXISTING CONDUIT/WIRING FROM DEMOLISHED LIGHT FIXTURES TO NEW LIGHT FIXTURE LOCATION AS INDICATED. PROVIDE NECESSARY BOXES, CONDUIT, AND WIRE.
3. PROVIDE AND INSTALL 6 POLE MAGNETIC LIGHTING CONTACTOR TO REPLACE OLD SWITCHBANK. BREAK EXISTING LIGHT CIRCUIT THROUGH NEW CONTACTOR. PROVIDE NEW SPST SWITCH ADJACENT TO NEW CONTACTOR TO CONTROL CONTACTOR COIL.
4. PROVIDE (2) NEW 2" CONDUITS, ROUTED FROM EXISTING MECHANICAL ROOM 115 TO NEW 2ND FLOOR ADDITION. PROVIDE 1/2" RIGID CONDUIT START AND END POINTS A MINIMUM OF 6" INTO ROOMS AND PROVIDE END GROMMET. ONE CONDUIT SHALL BE USED WITH A PULL STRING. THE REMAINING CONDUIT SHALL HOUSE THE MAIN DATA LINE FOR THE NEW 2ND FLOOR ADDITION. PROVIDE SINGLE RUN OF MULTI MODE 6-STAR FIBER OPTIC CABLE FROM START POINT TO END POINT UTILIZING STITCH CONNECTORS.
5. COORDINATE EXISTING SERVER ROOM LOCATION PRIOR TO BEGINNING WORK. MUST CONTACT START POINT IF DIFFERENT FROM WHAT IS INDICATED ON DRAWINGS.
6. PROVIDE WALL MOUNTED GROUND BAR FOR TELECOMMUNICATIONS RACK. GROUNDING IN ROOM 213 ADJACENT TO RACK. GROUND RACK TO GROUND BAR WITH #6 COPPER WIRE. PROVIDE AND INSTALL #6 COPPER GREEN INSULATED WIRE FROM GROUND BAR TO PANEL PN GROUND BUS.
7. ROUTE 1/2" CONDUIT ABOVE NEW 2ND FLOOR CEILING FROM NEW TELECOM GROUND BAR IN ROOM 213 TO PANEL PN. USE CONDUIT FOR GROUND WIRE BETWEEN THE TWO ROOMS.
8. PROVIDE AND INSTALL RACK MOUNTED LIU TO RECEIVE FIBER CABLE RUN. COORDINATE FIBER TERMINATION DETAIL WITH COR PRIOR TO INSTALLATION.



CIVIL ENGINEERING
94th AIRLIFT WING
DOBBINS AIR RESERVE BASE, GEORGIA



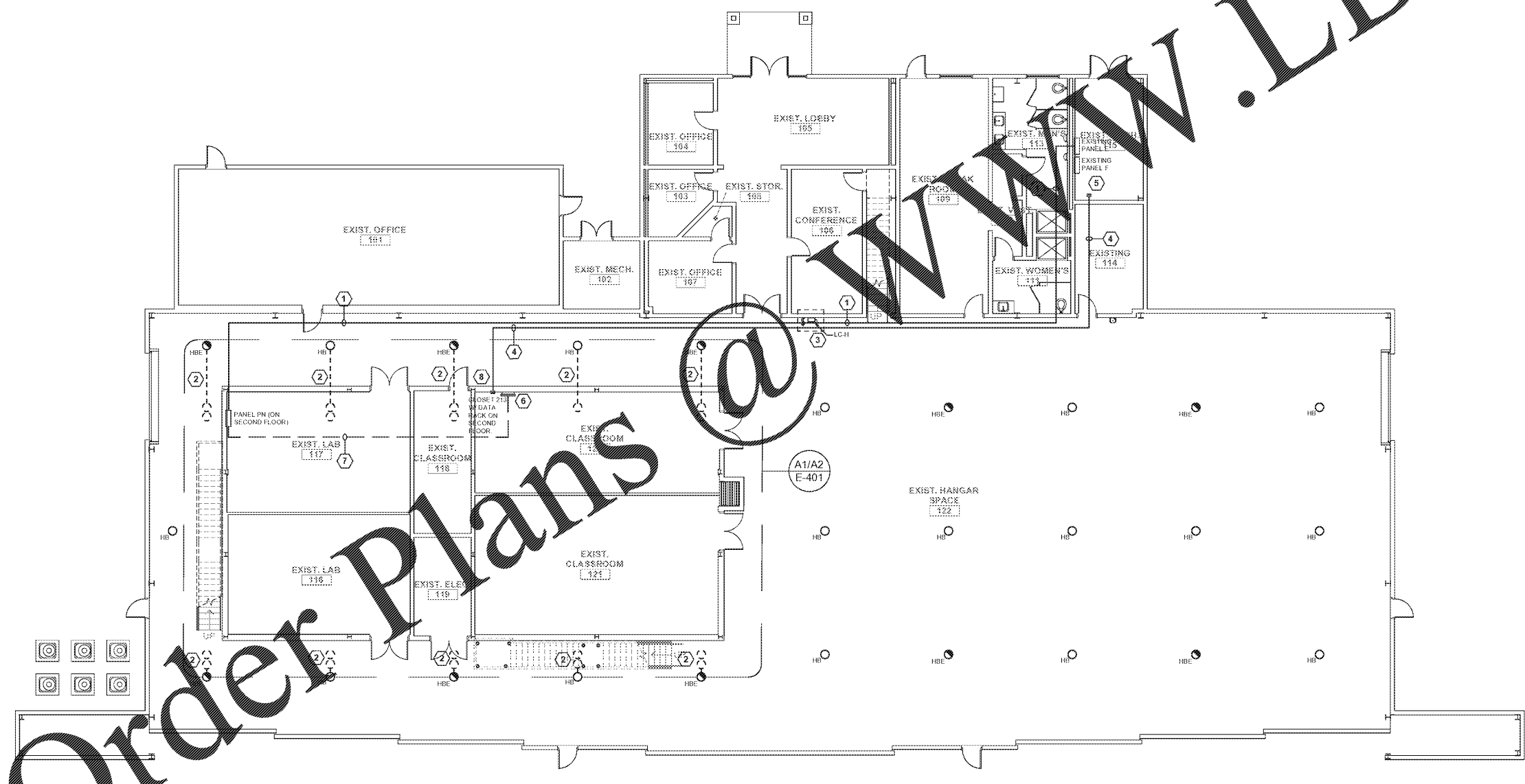
CROFT
Croft & Associates
1400 Blue Springs Road,
Suite 200
Kennesaw, GA 30144
770.529.7744 (p)
770.529.7746 (f)
www.croftga.com



REPAIR FACILITY & ADDITION
BUILDING 747
FGW/08-0027
DOBBINS AIR RESERVE BASE, GEORGIA
NEW OVERALL FLOOR PLAN - ELECTRICAL
PROJECT CONTACT:
ROBERT ERNEST 770.529.7744
robert.ernest@croftga.com

PROJECT	LOCATION	DRAWING	CONTACT
PROJECT No	2017-238		
PROJ. OFFICER	J MORGAN		
DESIGNED	R LESTER		
CHECKED	J MORGAN		
DATE	2017-02-23		
DRAWING	43	OF	45

E-102



NEW OVERALL FLOOR PLAN - ELECTRICAL
1 E-102
3/32" = 1'-0"
0 5 10 25 FT

Order Plans @