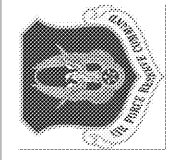


REV.	DATE	DESCRIPTION
A	2017-11-28	10% CONCEPT DESIGN
B	2017-12-22	25% SUBMITTAL
C	2018-02-23	50% SUBMITTAL
D	2018-04-13	FOR CONSTRUCTION
E	2018-06-01	FOR CONSTRUCTION

- KEY NOTES:**
- REMOVE EXISTING LIGHTING FIXTURES AND LOWERING WINCHES. DEMOLISH ELECTRICAL FEEDERS AND CONDUIT FOR LOWERING WINCHES BACK TO ORIGIN ELECTRICAL PANEL. TURN BREAKERS OFF AND LABEL AS 'SPARE'. LEAVE ELECTRICAL FEEDERS IN TACT FOR LIGHT FIXTURES FOR REUSE.
 - DEMOLISH SWITCHBANK FOR HANGER LIGHTS. THIS WILL BE REPLACED WITH A NEW LIGHTING CONTACTOR.



CIVIL ENGINEERING
94th AIRLIFT WING
 DOBBINS AIR RESERVE BASE, GEORGIA



CROFT
 Croft & Associates
 1400 Blue Springs Road
 Suite 200
 Kennesaw, GA 30144
 770.529.7744 (p)
 770.529.7746 (f)
 www.croftaa.com

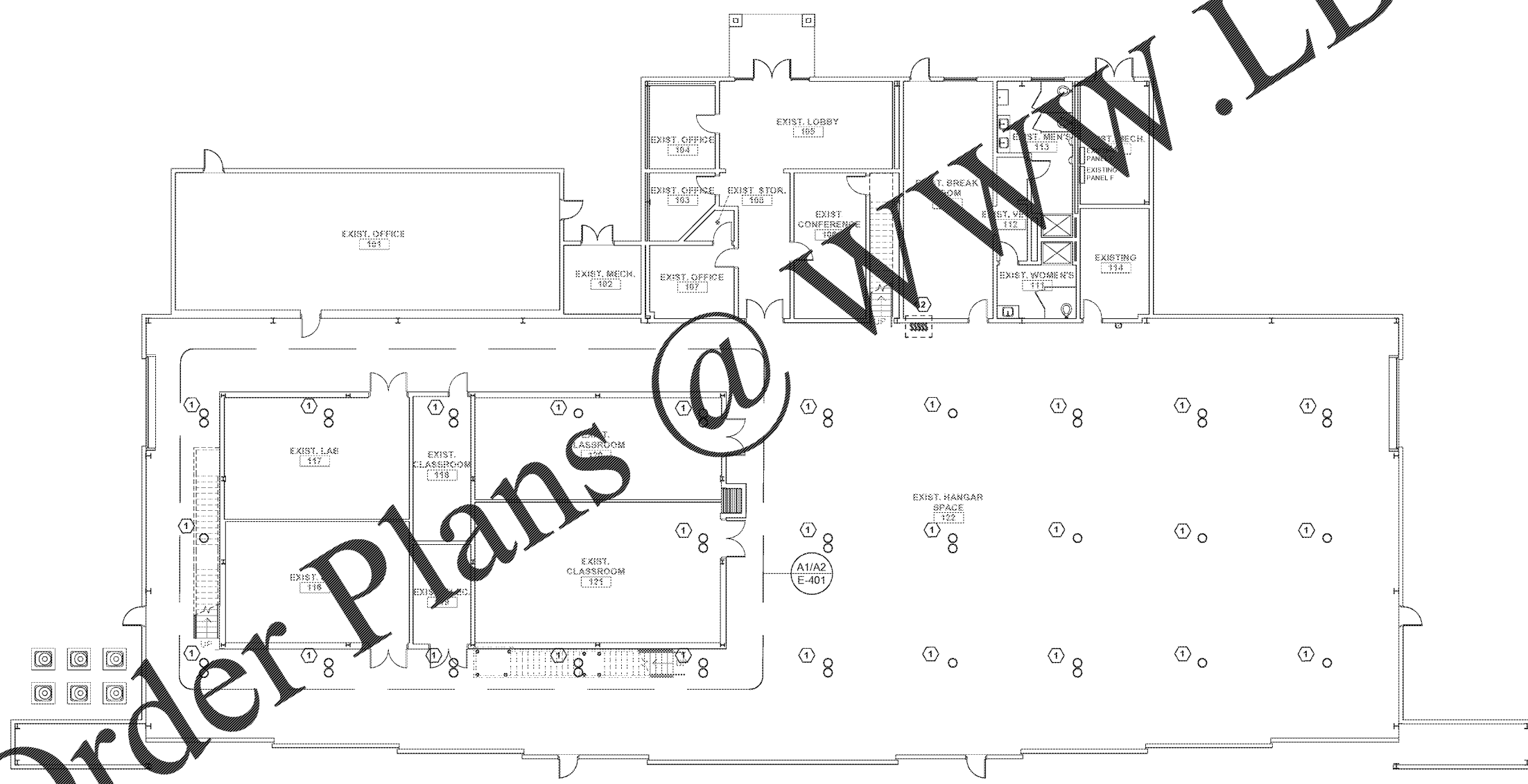


REPAIR FACILITY & ADDITION
BUILDING 747
 FGWB 08-0027
 DOBBINS AIR RESERVE BASE, GEORGIA
EXISTING OVERALL FLOOR PLAN - DEMO

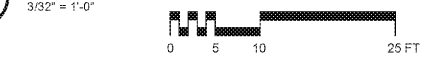
PROJECT CONTACT:
 ROBERT EBERST 770.625.5122
 robert.eberst@croftaa.com

PROJECT	LOCATION	DRAWING	CONTACT
PROJECT No	2017-238		
PROJ. OFFICER	J MORGAN		
DESIGNED	R LESTER		
CHECKED	J MORGAN		
DATE	2017-02-23		
DRAWING	42	OF	45

E-101



1
E-101
 EXISTING OVERALL FLOOR PLAN - DEMO



Order Plans @

WWW.LDILine.com