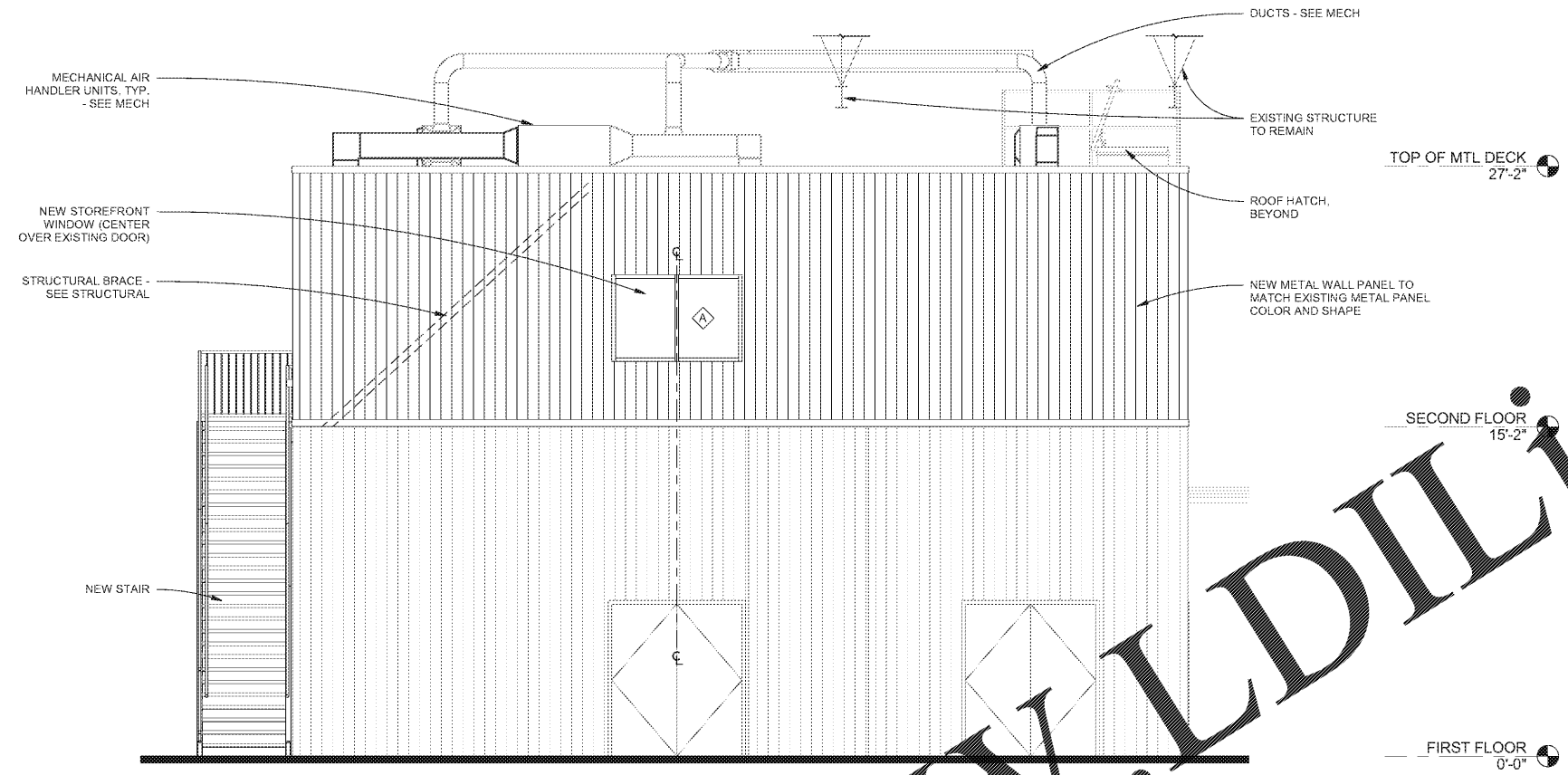
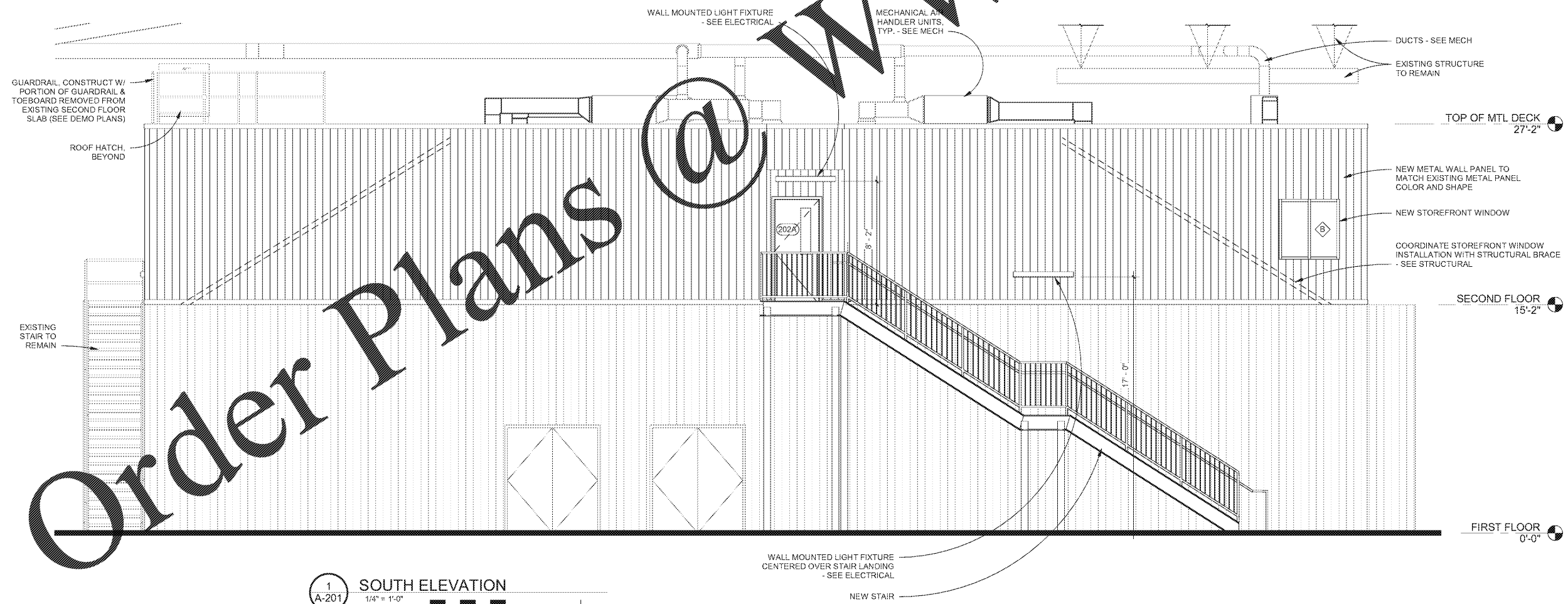


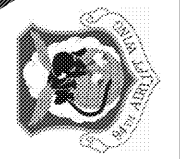
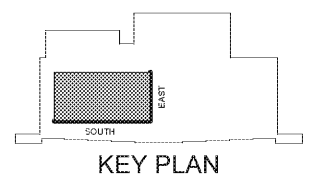
REV.	DATE BY	DESCRIPTION
A	2017-11-03	10% CONCEPT DESIGN
B	2017-12-22	65% SUBMITTAL
C	2018-02-23	95% SUBMITTAL
D	2018-04-13	FOR CONSTRUCTION
E	2018-06-01	FOR CONSTRUCTION



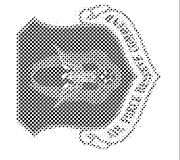
2 EAST ELEVATION
1/4" = 1'-0"
0 5 10 FT



1 SOUTH ELEVATION
1/4" = 1'-0"
0 5 10 FT



CIVIL ENGINEERING
94th AIRLIFT WING
DOBBINS AIR RESERVE BASE, GEORGIA



CROFT & ASSOCIATES
3400 Blue Springs Road,
Suite 200
Kennesaw, GA 30144
770.529.7744 (p)
770.529.7168 (f)
www.croftaa.com



REPAIR FACILITY & ADDITION
BUILDING 747
FGWB 08-0027
DOBBINS AIR RESERVE BASE, GEORGIA
CLASSROOM ADDITION ELEVATIONS
PROJECT CONTACT:
ROBERT.EINHORN@us.af.mil

PROJECT	LOCATION	DRAWING	CONTACT
PROJECT No:	2017-238		
PROJ. OFFICER:	J. MORGAN		
DESIGNED:	M. GUNN		
CHECKED:	J. MORGAN		
DATE:	2018-06-01		
DRAWING	19	OF	45

A-201