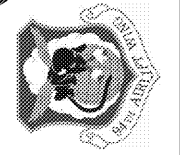


GENERAL NOTES:

- DO NOT SCALE DRAWINGS. USE DIMENSIONS ONLY.
- CONTRACTOR SHALL VERIFY ALL DIMENSIONS AND JOB CONDITIONS AND NOTIFY COR IMMEDIATELY OF DISCREPANCIES BEFORE PROCEEDING WITH THE WORK.
- DOORS SHALL BE LOCATED 4" FROM THE ADJACENT WALL, UNLESS NOTED OTHERWISE.
- DIMENSIONS ARE TO FACE OF GWB OR GRIDLINE U.N.O.
- INTERIOR PARTITIONS TO BE STC 49 MINIMUM.

CONSTRUCTION DOCS.

REV.	DATE BY	DESCRIPTION
A	2017-11-05	10% CONCEPT DESIGN
B	2017-12-22	65% SUBMITTAL
C	2018-02-23	95% SUBMITTAL
D	2018-04-13	FOR CONSTRUCTION
E	2018-06-01	FOR CONSTRUCTION



CIVIL ENGINEERING
94th AIRLIFT WING
 DOBBINS AIR RESERVE BASE, GEORGIA



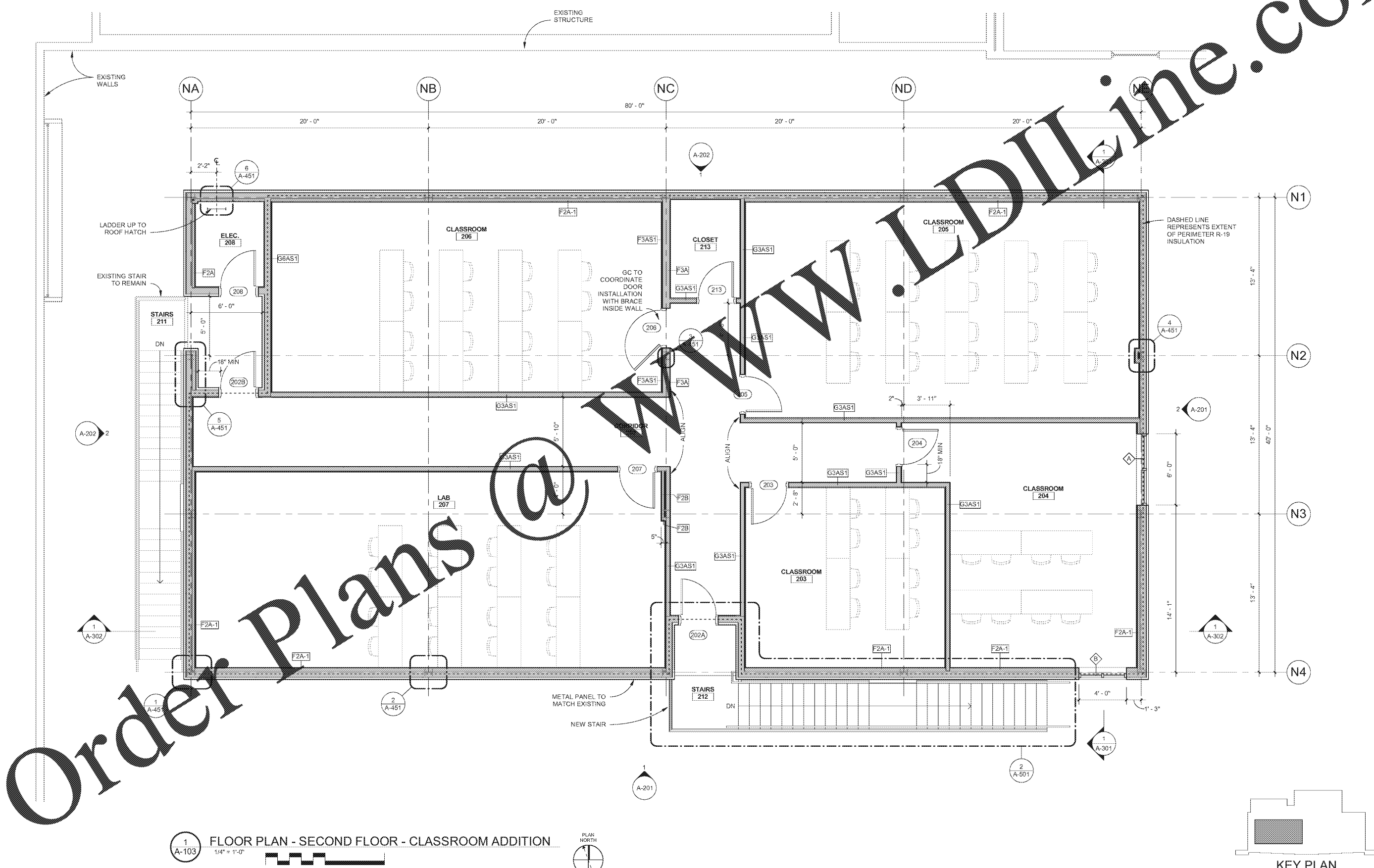
CROFT & ASSOCIATES
 3400 Blue Springs Road,
 Suite 200
 Marietta, GA 30144
 770.529.7744 (p)
 770.529.7168 (f)
 www.croft.com



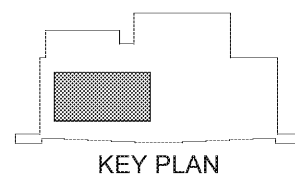
REPAIR FACILITY & ADDITION
BUILDING 747
 FGWB 08-0027
 DOBBINS AIR RESERVE BASE, GEORGIA
FLOOR PLAN - SECOND FLOOR - CLASSROOM ADDITION
 PROJECT CONTRACT: 17-0132
 ROBERT.E.SMITH@us.af.mil

PROJECT	LOCATION	DRAWING	CONTACT
PROJECT No:	2017-238		
PROD. OFFICER:	J. MORGAN		
DESIGNED:	M. GUNN		
CHECKED:	J. MORGAN		
DATE:	2018-06-01		
DRAWING	16	OF	45

A-103



1
A-103
FLOOR PLAN - SECOND FLOOR - CLASSROOM ADDITION
 1/4" = 1'-0"
 0 5 10 FT



Order Plans @