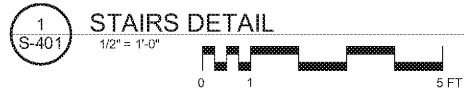
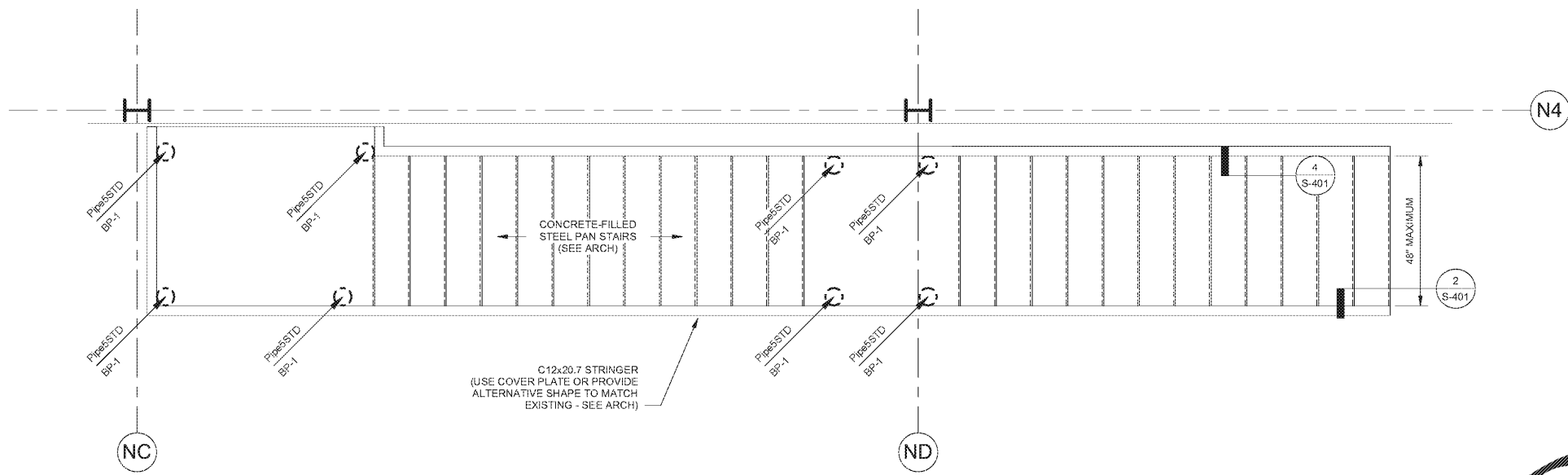
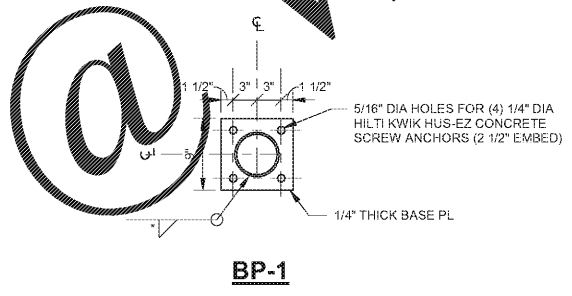
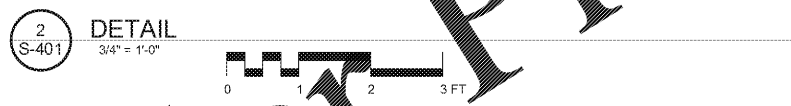
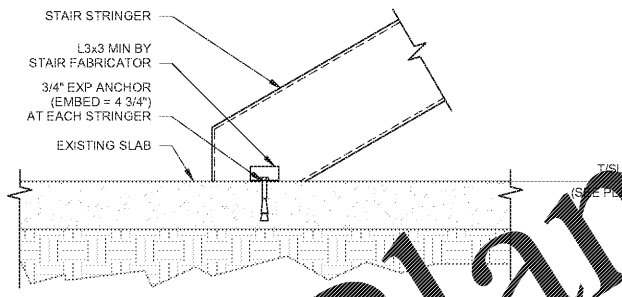


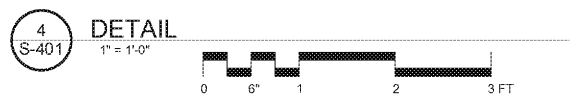
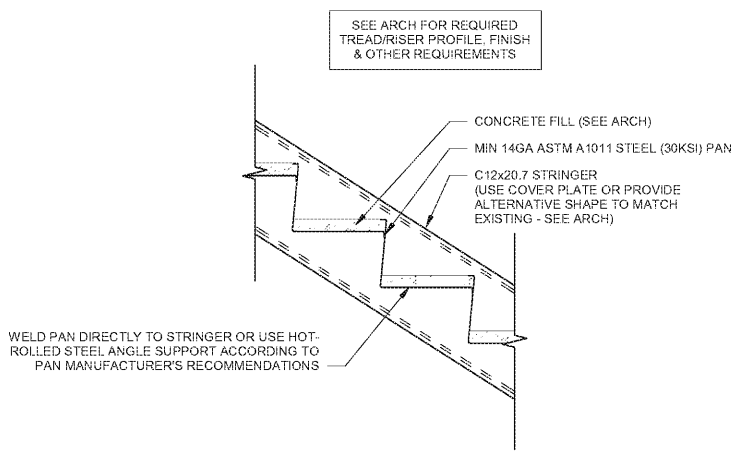
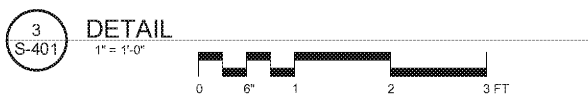
REV.	DATE BY	DESCRIPTION
0	2018-02-21	50% SUBMITTAL
1	2018-04-13	FOR CONSTRUCTION
2	2018-06-01	FOR CONSTRUCTION



- GENERAL NOTES:**
- SEE SPECIFICATIONS, GENERAL NOTES, AND ARCHITECTURAL DRAWINGS FOR MORE INFORMATION.
 - COORDINATE FABRICATION AND INSTALLATION OF ALL COMPONENTS WITH COMPONENT MANUFACTURER. SUBMIT MATERIALS AND ASSEMBLY DRAWINGS FOR REVIEW PRIOR TO FABRICATION.



- NOTE:**
- * DENOTES WELD SIZE TO EQUAL COLUMN WALL THICKNESS OR 5/16" (MAX)

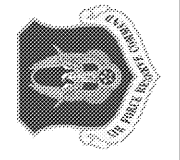


Order Plans

www.LDILine.com



CIVIL ENGINEERING
94th AIRLIFT WING
DOBBINS AIR RESERVE BASE, GEORGIA



CROFT & ASSOCIATES
3400 Blue Springs Road,
Suite 200
Kennesaw, GA 30144
770.528.7714 (p)
770.528.7716 (f)
www.croftaa.com

PES STRUCTURAL ENGINEERS



REPAIR FACILITY & ADDITION
BUILDING 747
FGWB 08-0027
DOBBINS AIR RESERVE BASE, GEORGIA

STAIR PLAN & DETAILS

PROJECT CONTACT:
ROBERT MORGAN, P.E.
rmorgan@us.af.mil

PROJECT	LOCATION	DRAWING	CONTACT
2017-238	J MORGAN	M WILSON	M PLANER
2018-06-01	9 OF 45		

S-401