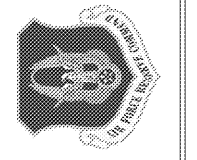


REV.	DATE BY	DESCRIPTION
A	2017-12-15	REVIEW SET
B	2017-12-22	65% SUBMITTAL
C	2018-02-21	85% SUBMITTAL
D	2018-04-13	FOR CONSTRUCTION
E	2018-06-01	FOR CONSTRUCTION



CIVIL ENGINEERING
94th AIRLIFT WING
DOBBINS AIR RESERVE BASE, GEORGIA



CROFT & ASSOCIATES
3400 Blue Springs Road,
Suite 200
Kennesaw, GA 30144
770.528.7714 (p)
770.528.7716 (f)
www.croftaa.com

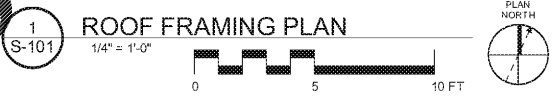
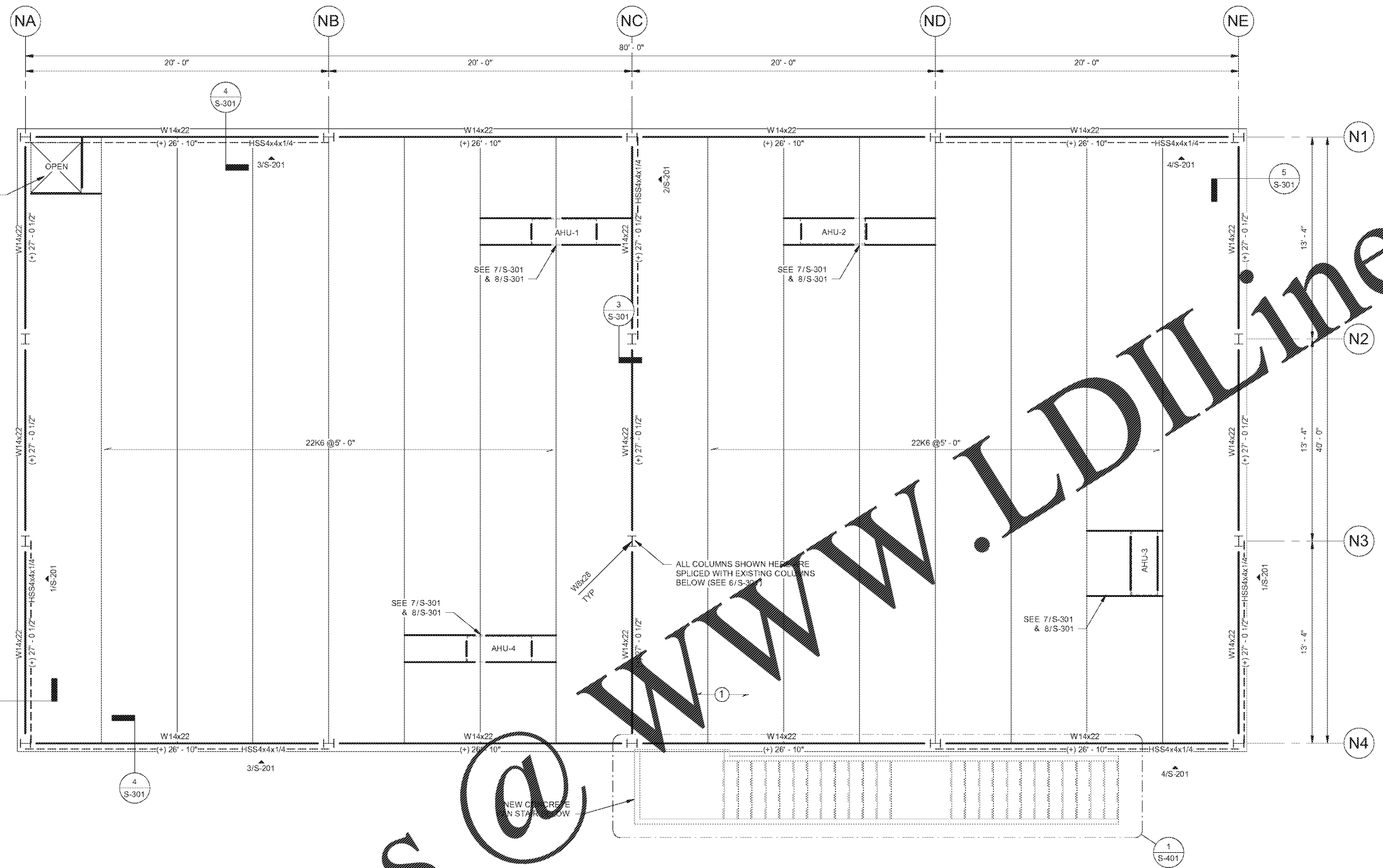
PES STRUCTURAL ENGINEERS
1000 Peachtree Industrial Blvd., Suite 200, Atlanta, Georgia 30309
404.525.8800
www.pes-engineers.com



REPAIR FACILITY & ADDITION
BUILDING 747
FGWB 08-0027
DOBBINS AIR RESERVE BASE, GEORGIA
ROOF FRAMING PLAN
PROJECT CONTACT: ROBERT L. MORGAN, 3132 robert.l.morgan@us.af.mil

PROJECT	LOCATION	DRAWING	CONTACT
PROJECT No.	2017-238		
PROJ. OFFICER	J. MORGAN		
DESIGNED	M. WILSON		
CHECKED	M. PLANER		
DATE	2018-06-01		
DRAWING	6 OF 45		

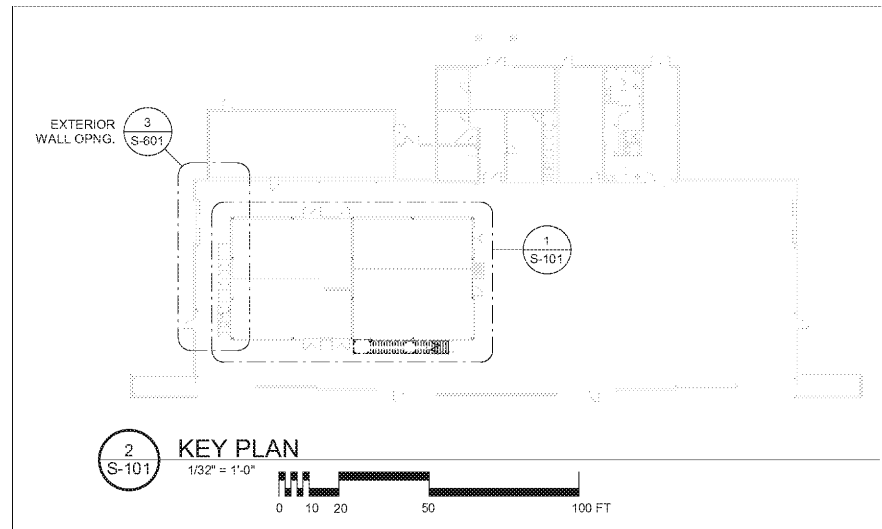
S-101



MECHANICAL UNITS		
MARK	WEIGHT	REMARKS
AHU-1	300 LB	30,000 BTU
AHU-2	300 LB	30,000 BTU
AHU-3	400 LB	30,000 BTU
AHU-4	400 LB	30,000 BTU

*WEIGHTS LISTED HERE INCLUDE ALL ACCESSORIES AND SUPPORTING CURB CONSTRUCTION. CONTACT THE CONTRACTING OFFICER REPRESENTATIVE BEFORE INSTALLATION IF THE INSTALLED WEIGHT INCLUDING ALL COMPONENTS EXCEEDS THE WEIGHT LISTED HERE.

- FRAMING GENERAL NOTES:**
- ① : DENOTES 20 GAUGE 1-1/2" TYPE A (NARROW RIB) STEEL ROOF DECK. MINIMUM DECK PROPERTIES:
 $I_p = 0.134 \text{ IN}^4/\text{FT}$
 $I_n = 0.145 \text{ IN}^4/\text{FT}$
 $S_p = 0.122 \text{ IN}^3/\text{FT}$
 $S_n = 0.130 \text{ IN}^3/\text{FT}$
 - SEE S-601 FOR DECK ATTACHMENT AND JOIST NET UPLIFT LOADS.
 - PROVIDE STANDARD HORIZONTAL BRIDGING PER S.J.I.
 - SEE "WATER PIPING SUPPORT SCHEDULE" ON SHEET S-002 FOR ALL PIPING SUPPORTED FROM ROOF STRUCTURE. NOTIFY COR IF PIPING WEIGHT IS IN EXCESS OF THOSE NOTED IN SCHEDULE.
 - DO NOT SUPPORT MULTIPLE SPRINKLER MAINS FROM THE SAME JOIST. CONTRACTOR TO PROVIDE SPRINKLER DRAWINGS TO COR AND JOIST MANUFACTURER FOR REVIEW AND COORDINATION PRIOR TO JOIST FABRICATION.
 - : DENOTES BRACED FRAMED (SEE ELEVATIONS)
 - ALL JOIST SEATS SHALL BE DESIGNED FOR ROLL-OVER FORCE SHOWN IN DETAIL 8/S-301.
 - JOIST MANUFACTURER SHALL DESIGN ALL JOISTS FOR ADDITIONAL 200 LB CONCENTRATED LOAD THAT CAN BE LOCATED ANYWHERE ALONG THE LENGTH OF THE JOIST. THIS ALLOWANCE IS INTENDED TO ACCOUNT FOR THE MECHANICAL UNITS SHOWN. ADDITIONAL FIELD-WELDED VERTICAL WEB MEMBERS SHALL BE INSTALLED ACCORDING TO THE JOIST MANUFACTURER AND DETAIL 8/S-301.
 - ALL OPENINGS IN STEEL DECK LARGER THAN 6" SHALL BE FRAMED ACCORDING TO DETAIL 7/S-301.
 - FABRICATOR SHALL DESIGN AND SUBMIT CALCULATIONS FOR ALL STEEL BEAM CONNECTIONS AS SPECIFIED FOR:
 AXIAL = 3.0 KIP
 SHEAR = 13.0 KIP



Order Plans @

WWW.LDILINE.COM