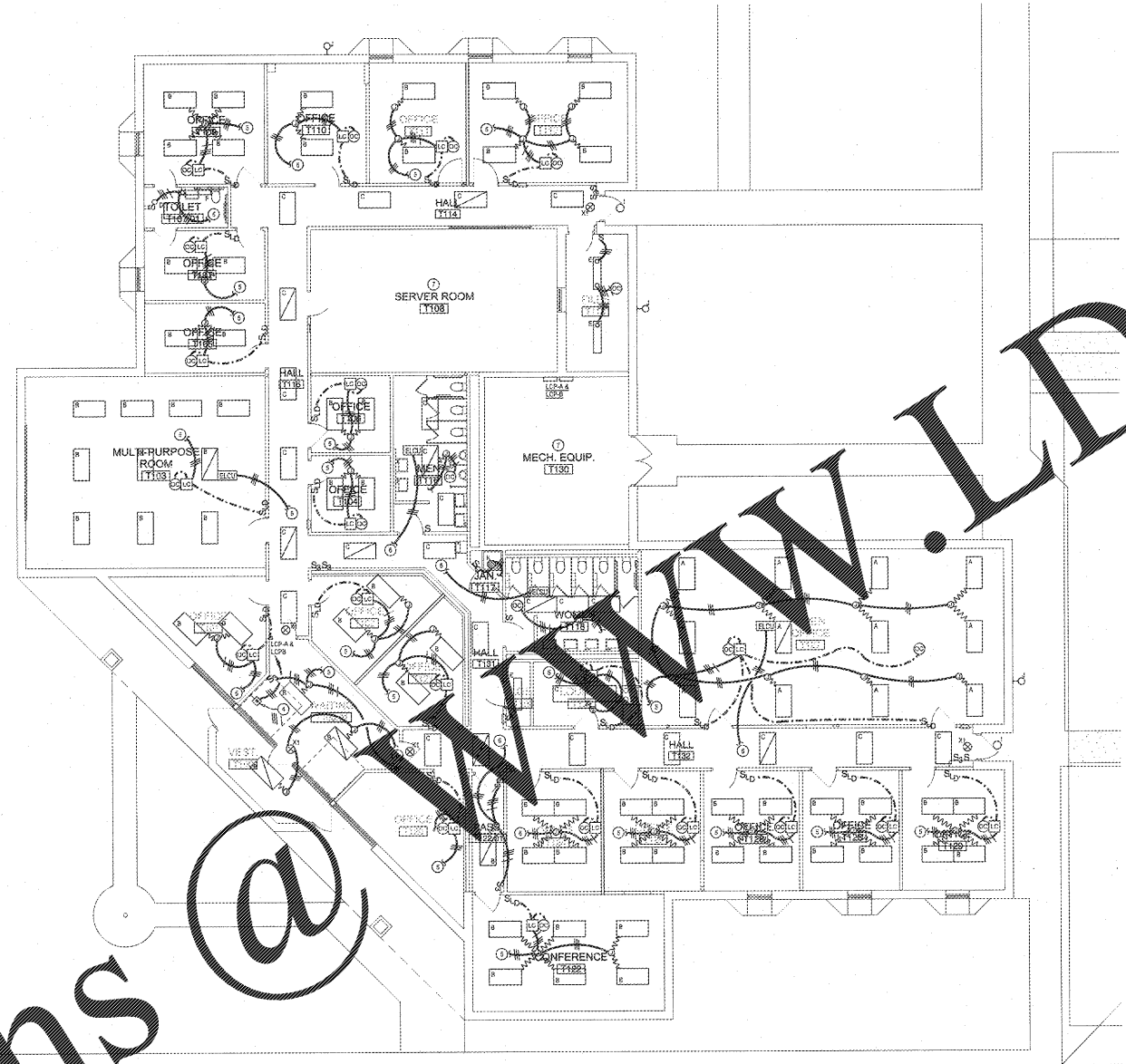


REVISIONS/ISSUANCES		
NO.	DATE	DESCRIPTION

NOTES: (THIS SHEET ONLY)

1. GENERAL: ALL EMERGENCY EGRESS LIGHT FIXTURES, ELCU NORMAL POWER BEHIND CIRCUIT, AND EXIT SIGNS SHALL BE UNSWITCHED.
2. GENERAL: LOCATION OF PRECESSED CEILING LUMINAIRES SHALL BE AS INDICATED ON ARCHITECTURAL SUSPECTED CEILING PLANS. THIS CONTRACTOR SHALL VERIFY ALL FIXTURE QUANTITIES. SHOULD QUANTITY DISCREPANCIES OCCUR, CONTRACTOR SHALL PROVIDE FOR THE GREATER VALUE.
3. GENERAL: PROVIDE 2-1/2" DRINKING CABLES FROM ROOM LIGHT CONTROLS TO EACH FIXTURE SHOWN IN A SPACE WITH LOW VOLTAGE DIGITAL DIMMER. THE CABLES SHALL BE SUPPORTED BY A HOOK SYSTEM.
4. INSTALL LIGHTING CONTROL SYSTEM OVERRIDE STATION AT THIS LOCATION. LABEL BUTTON WITH CONTROLLER AREA.
5. CONTRACTOR SHALL UTILIZE 2#12, #120, 1/2" C AND MAKE CONNECTION TO EXISTING 120V LIGHTING CIRCUIT.
6. CONTRACTOR SHALL UTILIZE 2#12, #120, 1/2" C AND MAKE CONNECTION TO EXISTING 120V EMERGENCY LIGHTING CIRCUIT.
7. EXISTING LIGHT FIXTURES SHALL REMAIN IN THIS SPACE.
8. GENERAL: EXISTING 120V LIGHTING CIRCUITS WITHIN BUILDING SHALL BE UTILIZED TO POWER NEW LIGHTING. ROOM AREAS REQUIRE REMOVAL OF LIGHTING CIRCUIT WITHIN SPACES WHOSE OTHERS MAY CONNECT DIRECTLY TO EXISTING SWITCHED CIRCUITS. PROVIDE LIGHTING CONTROL PANELS AS SHOWN AND SPECIFIED. THE EXISTING CORRIDORS AND COMMON AREAS LIGHTING CIRCUITS SHALL BE INTERCEPTED ABOVE ELECTRICAL PANELS AND REROUTED TO NEW DESIGNATED LIGHTING CONTROL PANEL. EXISTING CONDUIT AND WIRING MAY BE UTILIZED WHERE IT MEETS THIS SPECIFICATION.
9. GENERAL: DEMOLITION: REMOVE ALL EXISTING INTERFERING LIGHT FIXTURES AND EXIT SIGNS FROM THE BUILDING IN THEIR ENTIRETY. EXISTING CONDUIT, WIRING, SWITCHES, CONDUITS, AND SWITCHES ETC. UNLESS NOTED OTHERWISE, SHALL REMAIN TO BE CONNECTED TO EXISTING. PREPARE EXISTING CIRCUITS FOR CONNECTION TO NEW LIGHTING.



ELECTRICAL NEW WORK LIGHTING FLOOR PLAN - EXISTING BUILDING
 SCALE: _____ 1/8"=1'-0"

KEYPLAN

AH&P
 CONSULTING ENGINEERS
 ANDREWS, HAMMOCK & POWELL, INC.
 250 Oglethorpe Lane
 Suite 100
 MARIETTA, GEORGIA 30120
 MACON (478) 405-8301
 FAX (478) 455-8210
 WWW.AHPENGR.COM



Manley Spangler Smith Architects
 A Professional Corporation

528 Ebel Taylor Bl.
 P.O. Box 880
 Griffin, Georgia 30224
 Office 770.227.5473
 Fax 770.228.3442

PROJECT:
**HENRY COUNTY SCHOOLS
 MAINTENANCE / TECH /
 ADMIN EXPANSION**

CLIENT:
**HENRY COUNTY BOARD
 OF EDUCATION**

SHEET TITLE:
**ELECTRICAL NEW
 WORK LIGHTING
 FLOOR PLAN -
 EXISTING
 BUILDING**

© 2018 Manley Spangler Smith Architects, PC
 PROJECT NUMBER: 201728
 DATE: 06.15.2018
 SCALE: AS SHOWN
 DRAWN BY: CTS
 CHECKED BY: HHO

SHEET NO.: **E1.23**

Order Plans @

WWW.LDILine.com