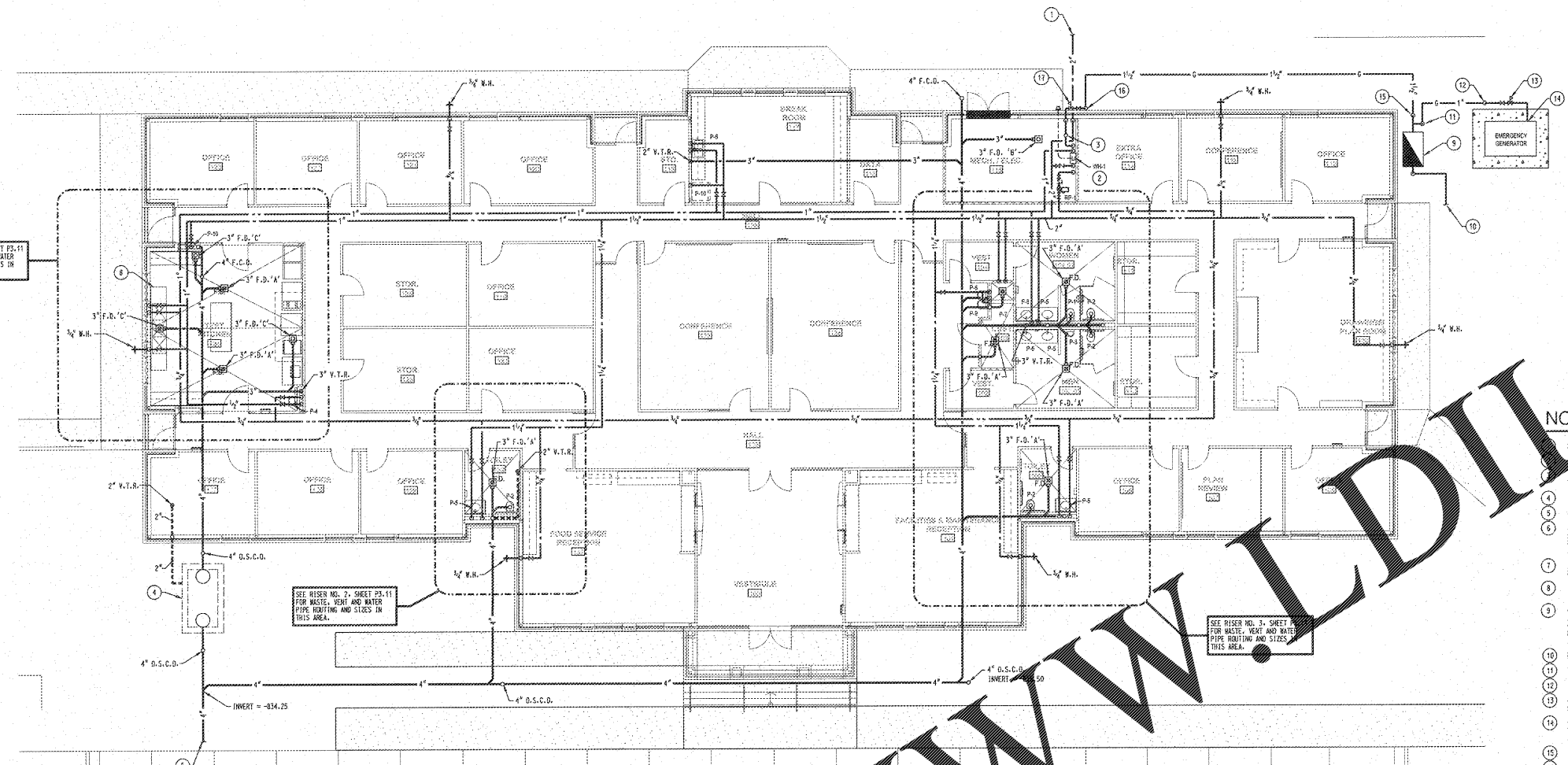
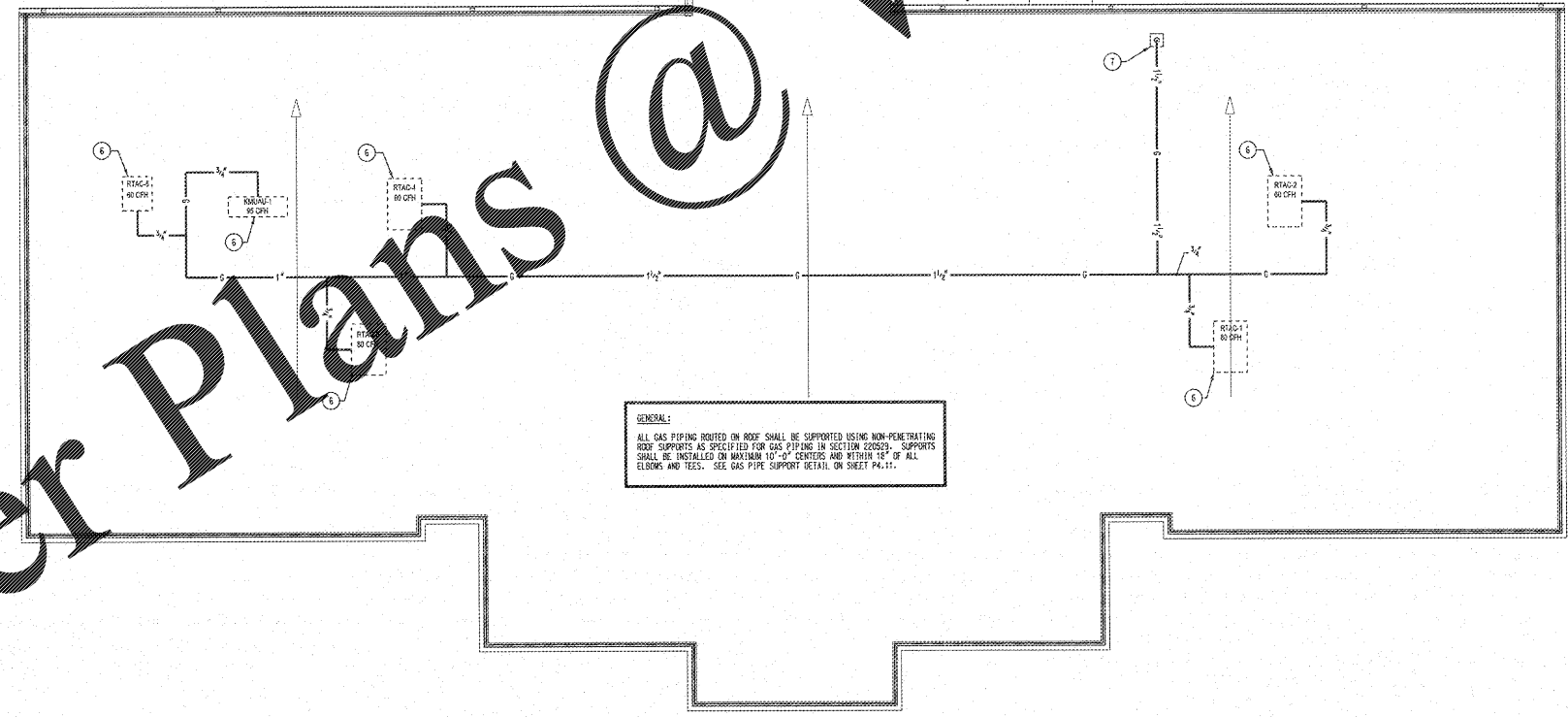


REVISIONS/ISSUANCES		
NO.	DATE	DESCRIPTION



**PLUMBING FLOOR PLAN**  
SCALE: 1/8"=1'-0"

- NOTES (THIS SHEET ONLY)**
- 2" CONDENSATE PIPING INTO THE BUILDING. SEE CIVIL DRAWINGS FOR PIPING CONTINUATION. UNLESS, WALL MOUNTED, GAS FIRED WATER HEATER. SEE DETAIL ON SHEET P4-11.
  - 1/2" GAS PIPING UP ONTO ROOF THROUGH PIPE BOX ASSEMBLY. SEE PLUMBING ROOF PLAN ON THIS SHEET FOR PIPING CONTINUATION.
  - 500 GALLON PRECAST GREASETRAP. SEE DETAIL ON SHEET P4-11.
  - 4" WASTE PIPING FROM BUILDING. SEE CIVIL DRAWINGS FOR PIPING CONTINUATION.
  - CONNECT 1/2" GAS PIPING TO ROOF MOUNTED HVAC UNIT AT THIS APPROXIMATE LOCATION. SEE MECHANICAL DRAWINGS FOR EXACT LOCATION OF UNIT AND APPROVED EQUIPMENT SUBMITTALS FOR EXACT LOCATION OF GAS CONNECTION. SEE TYPICAL GAS CONNECTION TO HVAC UNIT DETAIL ON SHEET P4-11.
  - 1/2" GAS PIPING UP FROM INSIDE THE BUILDING THROUGH A PIPE BOX ASSEMBLY. SEE DETAIL ON SHEET P4-11.
  - 3-COMPARTMENT SINK. SEE DETAIL ON SHEET P4-11 FOR WASTE AND WATER PIPE ROUTING UNDER SINK.
  - GAS METER SET. CONTRACTOR SHALL CONTACT THE LOCAL UTILITY AND MAKE ARRANGEMENTS FOR A GAS SERVICE AND METER CAPABLE OF DELIVERING 850 CFH OF NATURAL GAS AT 2" PSI. THE GAS LOAD BREAK DOWN IS AS FOLLOWS: SPACE HEATING = 435 CFH; WATER HEATING = 200 CFH; EMERGENCY GENERATOR = 280 CFH. CONTRACTOR SHALL COORDINATE ALL WORK WITH THE UTILITY AND PAY ALL COSTS.
  - HIGH PRESSURE GAS PIPING FROM UTILITY.
  - 1" ZPSI GAS PIPING DOWN TO BELOW GRADE. PROVIDE ANODELESS RISER AS SPECIFIED.
  - 1" ZPSI GAS PIPING UP FROM BELOW GRADE. PROVIDE ANODELESS RISER AS SPECIFIED.
  - CONTRACTOR SHALL PROVIDE A REGULATOR CAPABLE OF REGULATING 200 CFH OF NATURAL GAS FROM ZPSI TO 1" W.C.
  - CONNECT 1" GAS PIPING TO EMERGENCY GENERATOR. COORDINATE EXACT LOCATION OF GENERATOR WITH ELECTRICAL DRAWINGS AND EXACT LOCATION OF GAS CONNECTION WITH APPROVED EQUIPMENT SUBMITTALS. SEE TYPICAL GAS CONNECTION TO GENERATOR DETAIL ON SHEET P4-11.
  - 1/2" ZPSI GAS PIPING DOWN TO BELOW GRADE. PROVIDE ANODELESS RISER AS SPECIFIED.
  - 1/2" ZPSI GAS PIPING UP FROM BELOW GRADE. PROVIDE ANODELESS RISER AS SPECIFIED.
  - CONTRACTOR SHALL PROVIDE A REGULATOR CAPABLE OF REGULATING 635 CFH OF NATURAL GAS FROM ZPSI TO 1" W.C.



**GENERAL:**  
ALL GAS PIPING ROUTED ON ROOF SHALL BE SUPPORTED USING NON-PENETRATING ROOF SUPPORTS AS SPECIFIED FOR GAS PIPING IN SECTION 220209. SUPPORTS SHALL BE INSTALLED ON MAXIMUM 10'-0" CENTERS AND WITHIN 12" OF ALL ELONG AND TEES. SEE GAS PIPE SUPPORT DETAIL ON SHEET P4-11.

**PLUMBING ROOF PLAN**  
SCALE: 1/8"=1'-0"

**AH&P**  
CONSULTING ENGINEERS  
ANDREWS, HAMMOCK & POWELL, INC.  
250 Charter Lane  
Suite 100  
Macon, Georgia 31210  
Macon (478) 405-8301  
Fax (478) 405-8210  
WWW.AHPENGINEER.COM



**Manley Spangler Smith Architects**  
A Professional Corporation

325 East Taylor St.  
P.O. Box 880  
Griffin, Georgia 30224  
Office 770.227.5473  
Fax 770.228.3442

**PROJECT:**  
HENRY COUNTY SCHOOLS  
MAINTENANCE / TECH /  
ADMIN EXPANSION

**CLIENT:**  
HENRY COUNTY BOARD  
OF EDUCATION

**SHEET TITLE:**  
PLUMBING FLOOR  
AND ROOF PLANS

© 2018 Manley Spangler Smith Architects, PC  
PROJECT NUMBER: 201728  
DATE: 08.18.2018  
SCALE: 1/8"=1'-0"  
DRAWN BY: JBC  
CHECKED BY: JBC

SHEET NO.: P1.22

Order Plans @ [www.worldwideline.com](http://www.worldwideline.com)