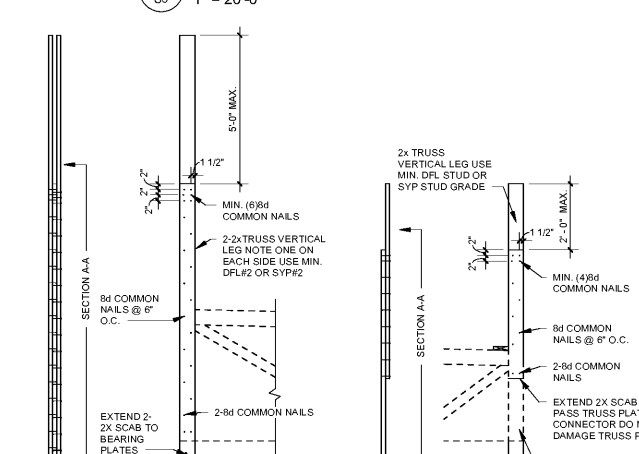
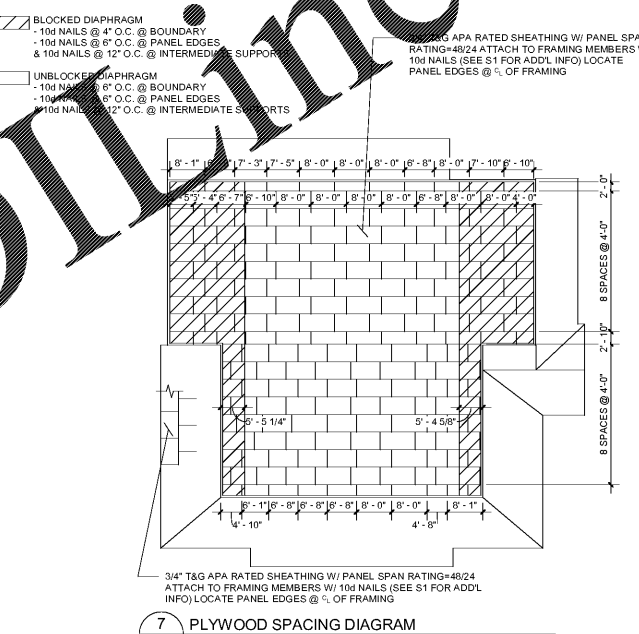
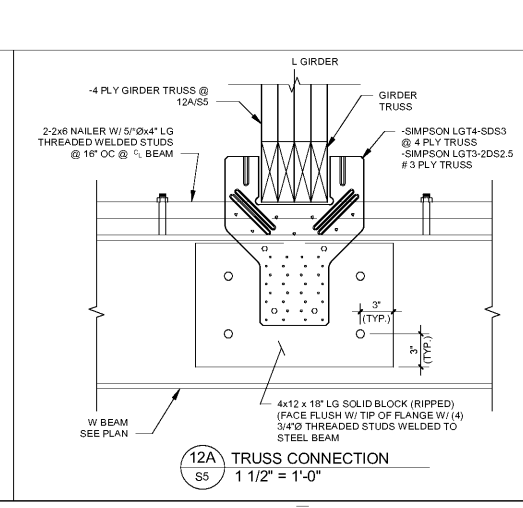
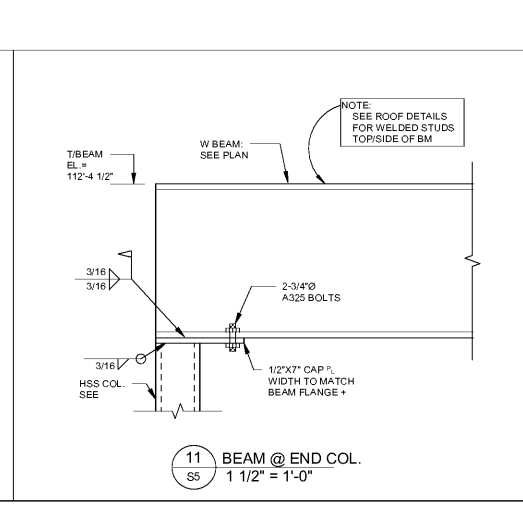
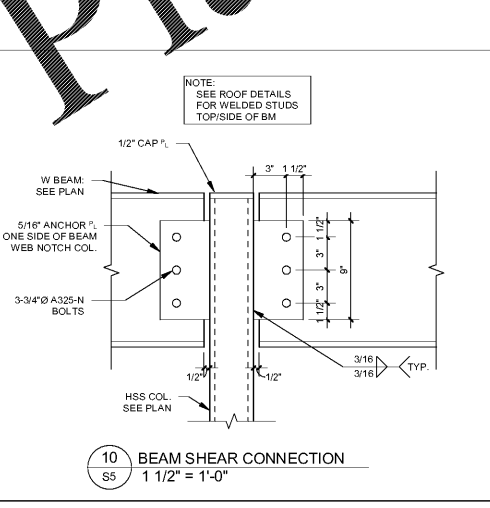
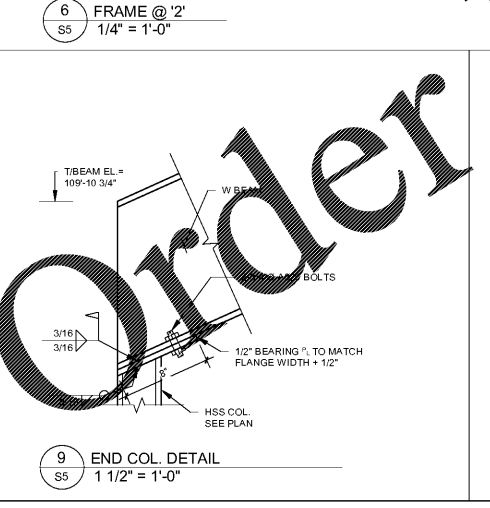
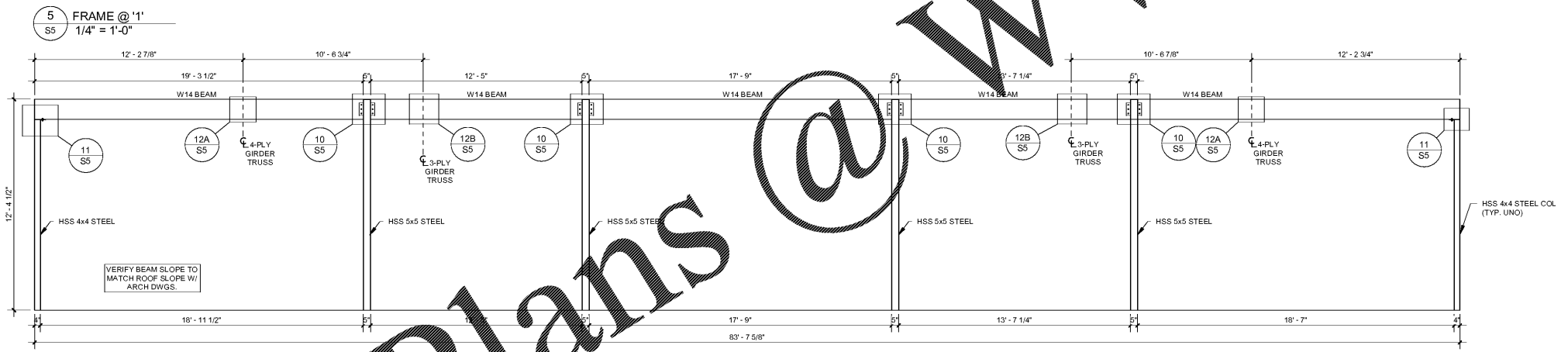
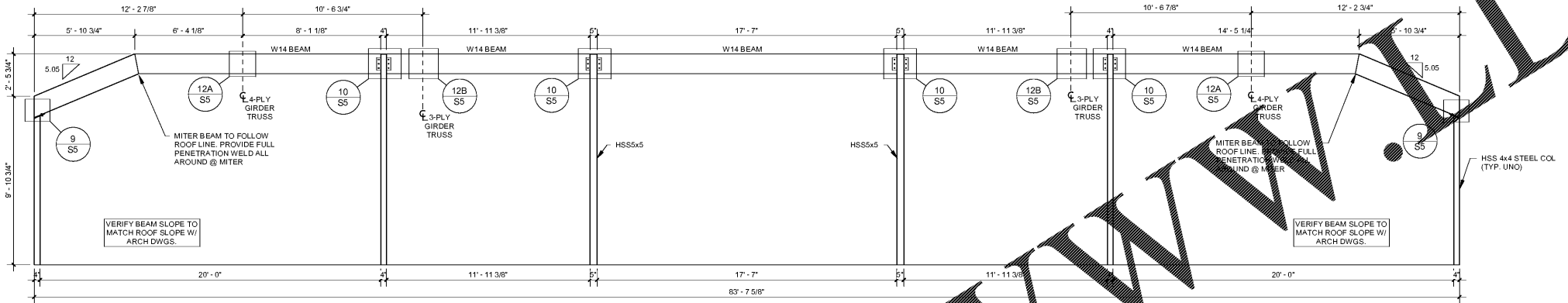
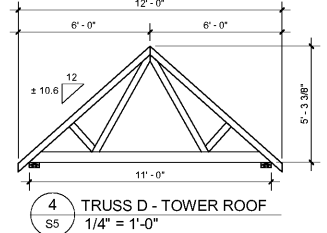


TRUSS INFORMATION (SEE SHEET S1 FOR ADDITIONAL TRUSS NOTES)

LIVE LOAD	20 p.s.f.
SNOW LOAD	21 p.s.f. BALANCED SNOW LOAD, SEE 1/S1.1 FOR SNOW DRIFT
WIND DATA	ASCE7-10 - EXPOSURE C ULTIMATE WIND SPEED = 120 mph NOMINAL WIND SPEED = 93 mph 105.9 p.s.f. FOR ELEVATION ≤ 22'-2" 108.2 p.s.f. FOR ELEVATION ≤ 26'-7"
MECHANICAL LOADS	SEE SHEET S3 FOR LOCATIONS AND WEIGHTS

SEE SHEET S3 FOR ALL ADDITIONAL LOADING ON TRUSSES (HOODS, HVAC UNITS, ETC.)

- NOTES:**
- TRUSS CONFIGURATION SHOWN IS SCHEMATIC. ACTUAL WEB MEMBERS, SPACING, ETC. SHALL BE DETERMINED BY THE TRUSS MANUFACTURER. TRUSS MANUFACTURER SHALL PROVIDE ADEQUATE SPACE BETWEEN TRUSS MEMBER FOR DUCTWORK AND FITTING.
 - LOCATIONS AND SIZES OF DUCTWORK OPENINGS SHALL BE VERIFIED WITH MECHANICAL DWGS.
 - FOR TRUSS BRACING SEE NOTES ON S1. PERMANENT TRUSS BRACING BY TRUSS MANUFACTURER.
 - TRUSS A-2 TO SUPPORT BRACE REACTION 5.1 DOWNWARD LOAD 415 PLF (ASD NOMINAL WIND).
 - FOR DRAG STRUT FORCES ON WOOD TRUSSES. SEE SHEET S3.
 - DRAG LOAD SHALL BE DISSIPATED THROUGH TRUSS TOP CHORD INTO ROOF DIAPHRAGM.



bennett & pless
Experience Structural Expertise
Atlanta, Georgia • Boca Raton, Florida
Charlotte, North Carolina • Chattanooga, Tennessee

1964 - 2018 Celebrating 54 Years of Structural Excellence

47 Perimeter Center East, Suite 500
Atlanta, Georgia 30346
Tel 678 990 8700 Fax 678 990 8701
Copyright 2018 • Bennett & Pless, Inc.
All Rights Reserved
B & P Job Number 18047

NOTE:
DO NOT SCALE OFF THESE DRAWINGS. LAYOUT THE BUILDING USING APPLICABLE CONTRACT DRAWINGS, BUILDING DIMENSIONS AND THE LOCATION OF ALL STRUCTURAL ELEMENTS INCLUDING BUT NOT LIMITED TO SLAB EDGES, WALLS, COLUMNS, OPENINGS AND DEPRESSIONS SHALL BE COORDINATED WITH THE ARCHITECTURAL DRAWINGS PRIOR TO LAYOUT OF THE BUILDING. RESOLVE ANY DISCREPANCIES.

TO THE BEST OF THE ENGINEER-OF-RECORDS KNOWLEDGE AND ABILITY, THE COMPLETED STRUCTURE DEPICTED ON THESE DOCUMENTS COMPLIES WITH THE APPLICABLE MINIMUM BUILDING CODES.

TEXAS ROADHOUSE
1203 VANN DRIVE, NWC of US 45
and I-40
JACKSON, TN

BID SET 8/27/2018

THESE DRAWINGS AND PLANS ARE THE PROPERTY OF BDO ARCHITECTS AND ARE NOT TO BE REPRODUCED, COPIED, OR USED IN ANY MANNER WITHOUT THE EXPRESS WRITTEN PERMISSION OF BDO ARCHITECTS. ANY REPRODUCTION OR USE OF THESE PLANS FOR CONSTRUCTION SHALL BE CONSIDERED ACCEPTANCE OF THE TERMS CONTAINED HEREIN AND THE STABILITY AND CONSTRUCTION OF THE PLANS SHALL NOT BE GUARANTEED OR Warranted BY BDO ARCHITECTS. BDO ARCHITECTS SHALL NOT BE RESPONSIBLE FOR ANY DAMAGES OR LOSSES ARISING OUT OF OR FROM THE USE OF THESE PLANS. BDO ARCHITECTS SHALL NOT BE RESPONSIBLE FOR ANY DAMAGES OR LOSSES ARISING OUT OF OR FROM THE USE OF THESE PLANS. BDO ARCHITECTS SHALL NOT BE RESPONSIBLE FOR ANY DAMAGES OR LOSSES ARISING OUT OF OR FROM THE USE OF THESE PLANS.

ISSUE	BY	DATE	DESCRIPTION

PROJECT INFORMATION BLOCK

JOB #	17005
DATE	08-27-18
DRAWN BY:	JC
CHECKED BY:	PG

SHEET TITLE

ROOF FRAMING DETAILS

SHEET NUMBER

S5

Order Plans @