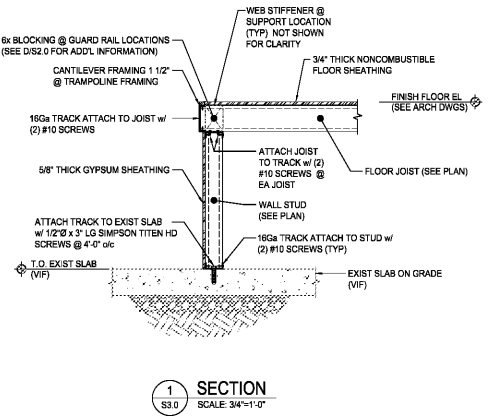
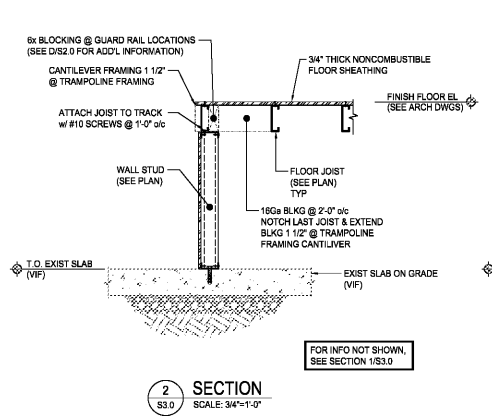


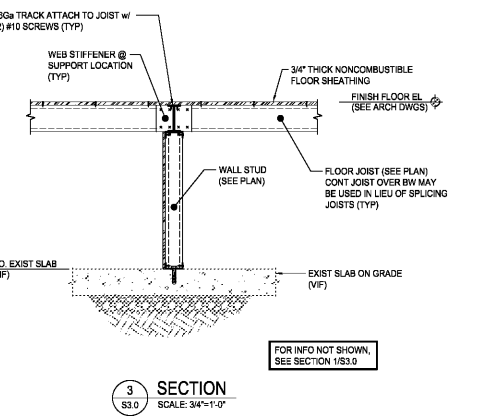
COPYRIGHT © 2014 BY DANIEL J. JOSE ARCHITECTURE, L.L.C. UNAUTHORIZED REPRODUCTION OR OTHER USE OF THIS DRAWING IS STRICTLY PROHIBITED.



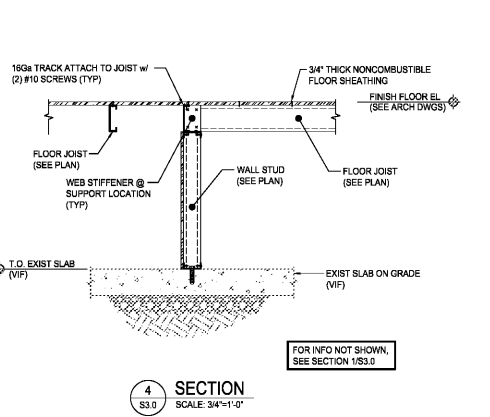
1 SECTION  
SCALE: 3/4"=1'-0"



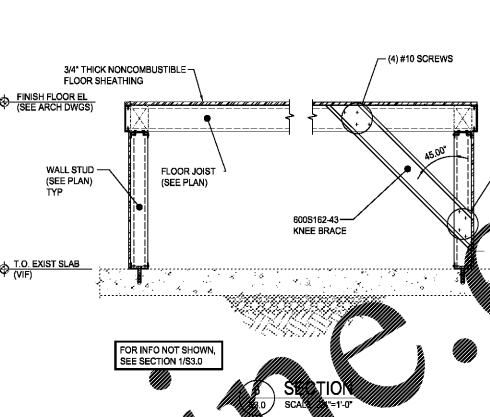
2 SECTION  
SCALE: 3/4"=1'-0"



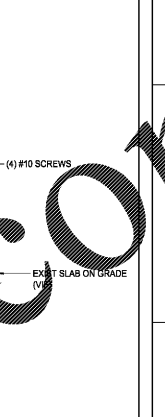
3 SECTION  
SCALE: 3/4"=1'-0"



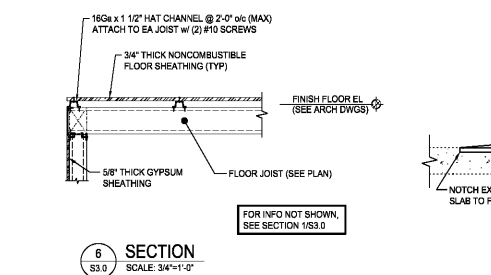
4 SECTION  
SCALE: 3/4"=1'-0"



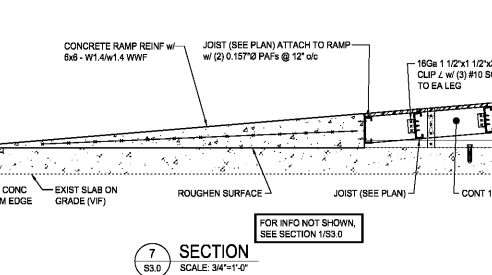
5 SECTION  
SCALE: 3/4"=1'-0"



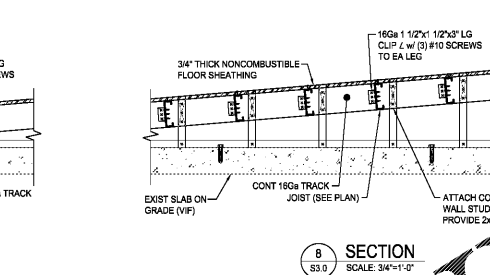
6 SECTION  
SCALE: 3/4"=1'-0"



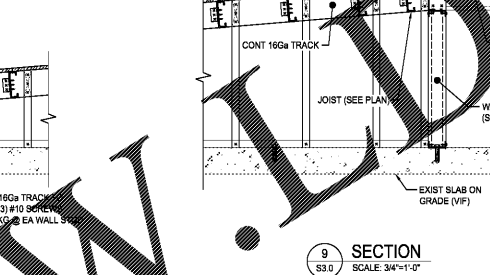
7 SECTION  
SCALE: 3/4"=1'-0"



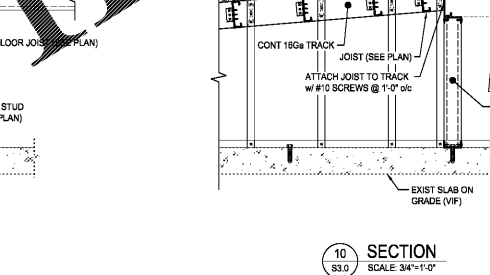
8 SECTION  
SCALE: 3/4"=1'-0"



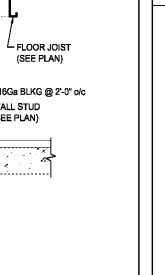
9 SECTION  
SCALE: 3/4"=1'-0"



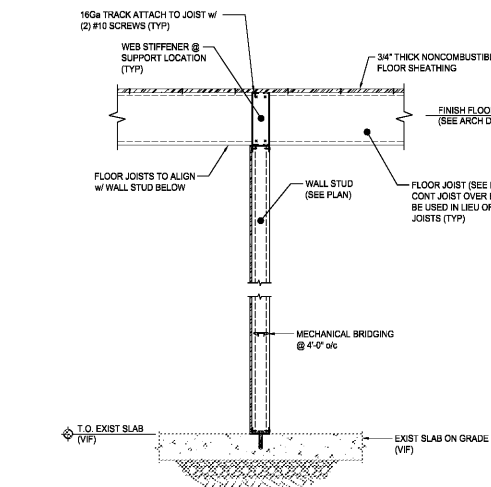
10 SECTION  
SCALE: 3/4"=1'-0"



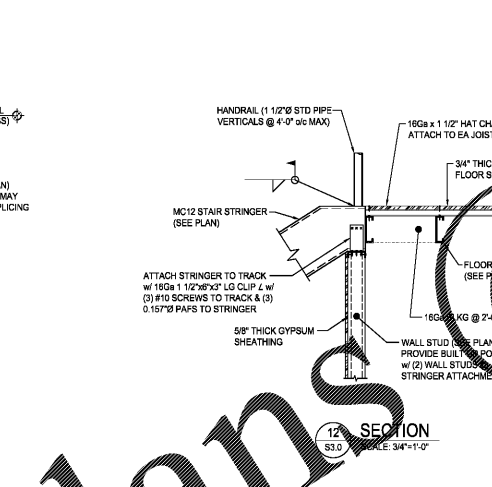
11 SECTION  
SCALE: 3/4"=1'-0"



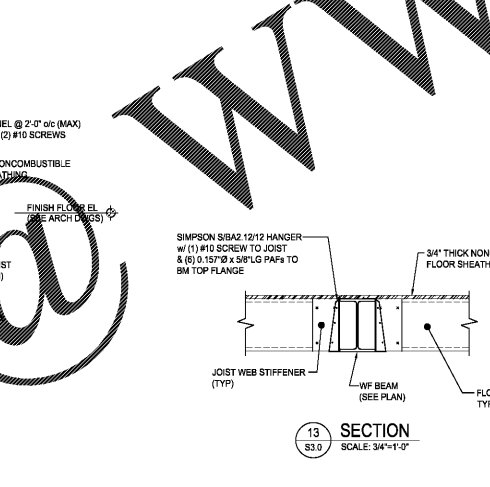
12 SECTION  
SCALE: 3/4"=1'-0"



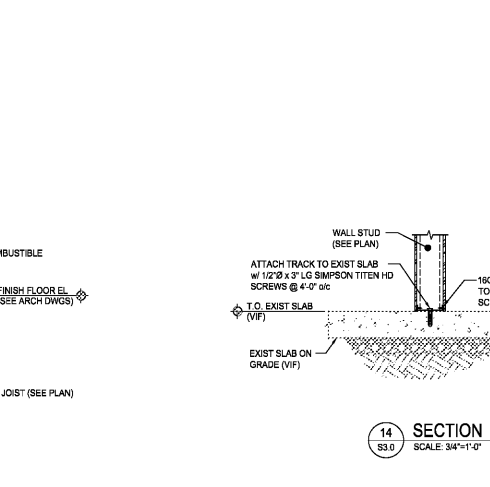
13 SECTION  
SCALE: 3/4"=1'-0"



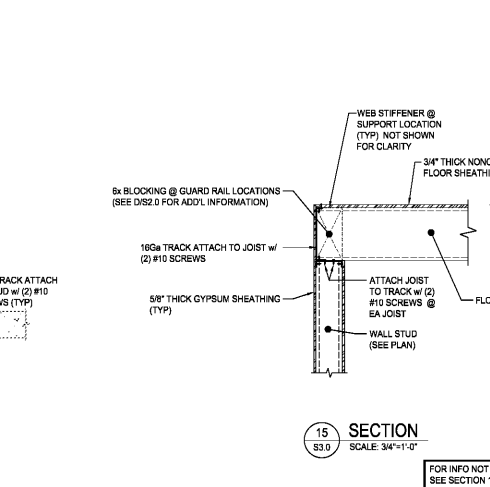
14 SECTION  
SCALE: 3/4"=1'-0"



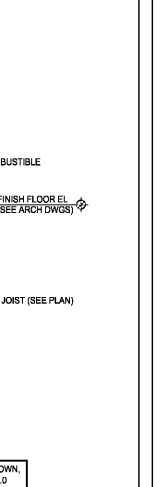
15 SECTION  
SCALE: 3/4"=1'-0"



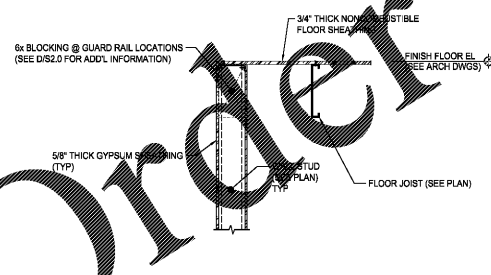
16 SECTION  
SCALE: 3/4"=1'-0"



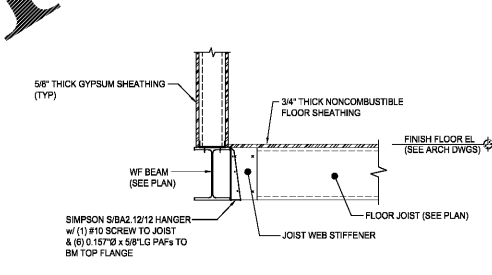
17 SECTION  
SCALE: 3/4"=1'-0"



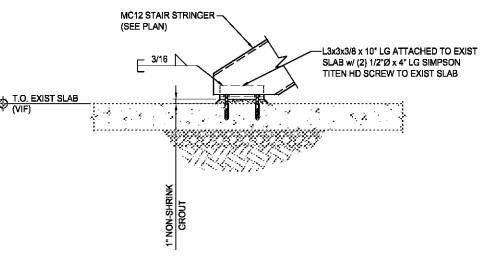
18 SECTION  
SCALE: 3/4"=1'-0"



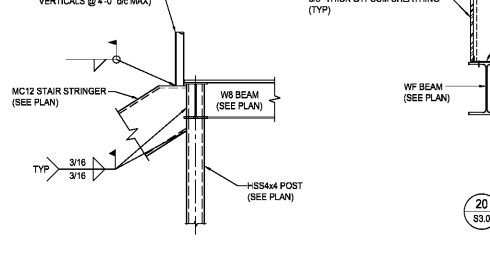
19 SECTION  
SCALE: 3/4"=1'-0"



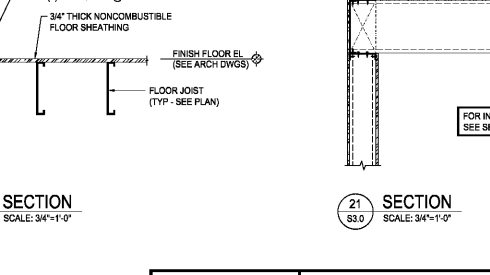
20 SECTION  
SCALE: 3/4"=1'-0"



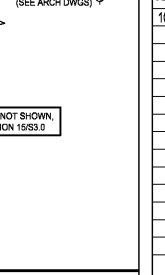
21 SECTION  
SCALE: 3/4"=1'-0"



22 SECTION  
SCALE: 3/4"=1'-0"



23 SECTION  
SCALE: 3/4"=1'-0"

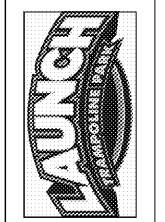


24 SECTION  
SCALE: 3/4"=1'-0"

Order Plans @

WWW.IDDLINE.COM

DANIEL J. JOSE ARCHITECT



PROPOSED INTERIOR ALTERATIONS FOR:  
LAUNCH TRAMPOLINE PARK  
WATERFORD LAKES  
610 N. ALAFAYA TRAIL  
ORLANDO, FL 32828

PROJECT NO. 180503  
DRAWN BY: NV  
CHECKED BY: PLC  
SCALE: AS NOTED  
ISSUE FOR:  
100% PERMIT/BID 9/5/18  
DRAWING TITLE:  
SECTIONS & DETAILS  
S3.0

ANTHONY J. VARANO  
PROFESSIONAL ENGINEER  
FL LIC. NO. 79612  
MICHAEL A. BEACH & ASSOCIATES, LLC  
CONSULTING STRUCTURAL ENGINEERING  
TWIN PONDS EXECUTIVE CAMPUS, SUITE 205  
205 BIRCHFIELD DRIVE  
MOUNT LAUREL, NEW JERSEY 08054  
PH: (856) 273-1909 FAX: (856) 273-1480  
EMAIL: mal@ma-beach.com  
NJ Certificate of Authorization No. 2462427962200  
Project No. 1624.04