

# WALL SCHEDULE

MARK	CONSTRUCTION DETAIL	MATERIAL DESCRIPTION	REMARKS
A		BRICK VENEER UP TO 9'-0" A.F.F. CONT. MASONRY DRAINAGE IN 1/2" AIR SPACE 1" INSUL. BOARD DAMPPROOFING ON C.M.U. 8" C.M.U. UP TO 9'-4" A.F.F.	WALL TYPE "A" - UP TO 9'-0" A.F.F. FILLED W/ FOAM SEE WALL TYPE "A1" FOR BALANCE OF WALL SEE BUILDING ELEVATIONS AND WALL SECTIONS FOR BRICK COURSES/METAL PANEL TRANSITION
A1		METAL PANEL ABOVE BRICK VENEER DAMPPROOFING ON C.M.U. 8" C.M.U.	WALL TYPE "A1" - FROM 9'-0" TO 9'-4" A.F.F. SEE WALL TYPE "A" FOR BALANCE OF WALL SEE BUILDING ELEVATIONS AND WALL SECTIONS FOR BRICK COURSES/METAL PANEL TRANSITION
A2		METAL PANEL ABOVE BRICK VENEER STEEL STRUCTURE	WALL TYPE "A2" - ABOVE 9'-4" A.F.F.; SEE WALL TYPE "A" & "A1" FOR BALANCE OF WALL SEE BUILDING ELEVATIONS AND WALL SECTIONS FOR BRICK COURSES/METAL PANEL TRANSITION
B		BRICK VENEER CONT. MASONRY DRAINAGE IN 1/2" AIR SPACE 1" INSUL. BOARD DAMPPROOFING ON C.M.U. 8" C.M.U.	SEAL TO UNDERSIDE OF ROOF DECK/STRUCTURE, SEE 1/B-A5.1 *MATCH EXISTING WALL WIDTH
B1		BRICK VENEER CONT. MASONRY DRAINAGE IN 1/2" AIR SPACE 1" INSUL. BOARD DAMPPROOFING ON C.M.U. 8" C.M.U. 5/8" GYP. BD. ON 1/2" FURRING CHANNELS @ 24" O.C.	SEAL TO UNDERSIDE OF ROOF DECK/STRUCTURE, SEE 1/B-A5.1 *MATCH EXISTING WALL WIDTH
C		BRICK VENEER TO MATCH EXISTING 6" C.M.U.	SEAL TO UNDERSIDE OF ROOF DECK/STRUCTURE, SEE 1/B-A5.1 *MATCH EXISTING WALL WIDTH
D		8" C.M.U.	SEAL TO UNDERSIDE OF ROOF DECK/STRUCTURE, SEE 1/B-A5.1
E		8" C.M.U. UP TO 9'-4" A.F.F.	
F		8" C.M.U. UP TO 10'-8" A.F.F.	
G		8" C.M.U. UP TO 11'-4" A.F.F. TYPE "P" ABOVE	SEAL TO UNDERSIDE OF ROOF DECK/STRUCTURE, SEE 3/B-A5.1 SEE DETAIL 7/B-A5.1 FOR TRANSITION
H		1-HR FIRE-RATED 8" C.M.U. (ASTM E-119) FILLED W/ FOAM UP TO 11'-4" A.F.F. TYPE "Q" ABOVE	SEAL TO UNDERSIDE OF ROOF DECK/STRUCTURE, SEE 3/B-A5.1 SEE DETAIL 7/B-A5.1 FOR TRANSITION
J		6" C.M.U.	SEAL TO UNDERSIDE OF ROOF DECK/STRUCTURE, SEE 1/B-A5.1
K		6" C.M.U. UP TO 9'-4" A.F.F.	
L		EXTERIOR WALL 2 1/2"x1/4" BENT BAR @ 24" O.C. HORIZ. & VERT. SECURE IN FULLY GROUDED CELLS 8" CHASE FILLED W/ FOAM 4" C.M.U. 10'-0" A.F.F.	
M		EXISTING WALL 2 1/2"x1/4" BENT BAR @ 24" O.C. HORIZ. & VERT. SECURE IN FULLY GROUDED CELLS & EXIST. C.M.U. 8" CHASE FILLED W/ FOAM 8" C.M.U. 10'-0" A.F.F.	
N		EXISTING WALL 6" METAL STUDS @ 16" O.C. CHASE W/ BATT INSULATION 5/8" M.R. GYP. BD.	SEAL TO UNDERSIDE OF ROOF DECK/STRUCTURE, SEE M-3/A5.1
P		5/8" GYP. BD. 3 5/8" METAL STUDS @ 24" O.C. W/ SOUND INSULATION 5/8" GYP. BD.	SEAL TO UNDERSIDE OF ROOF DECK/STRUCTURE, SEE 3/M-A5.1 *USE M.R. GYP. BD. ON JANITOR'S CLOSET SIDE
Q		5/8" TYPE "X" GYP. BD. 3 5/8" METAL STUDS @ 24" O.C. W/ SOUND INSULATION 5/8" TYPE "X" GYP. BD.	SEAL TO UNDERSIDE OF ROOF DECK/STRUCTURE, SEE 3/M-A5.1 (1-HOUR FIRE-RATED ASSEMBLY - U.L. DESIGN #U465 OR EQUAL)

MARK	CONSTRUCTION DETAIL	MATERIAL DESCRIPTION	REMARKS
R		5/8" GYP. BD. ON 1/2" FURRING CHANNELS @ 24" O.C. 4" C.M.U.* (OR EXISTING BRICK VENEER) AIR SPACE (OR EXISTING INSULATION) 4" C.M.U.* (OR EXISTING C.M.U.) 5/8" GYP. BD. ON 1/2" FURRING CHANNELS @ 24" O.C.	SEAL TO UNDERSIDE OF ROOF DECK/STRUCTURE, SEE 1 & 3/M-A5.1 *F.V. AND MATCH EXISTING WIDTH
S		EXISTING WALL	SEAL TO UNDERSIDE OF ROOF DECK/STRUCTURE, SEE 1 & 3/M-A5.1 *F.V. AND MATCH EXISTING WIDTH
T		5/8" GYP. BD. ON 1/2" FURRING CHANNELS @ 24" O.C. 6" C.M.U.* (OR EXISTING C.M.U.) 5/8" GYP. BD. ON 1/2" FURRING CHANNELS @ 24" O.C.	SEAL TO UNDERSIDE OF ROOF DECK/STRUCTURE, SEE 1 & 3/M-A5.1 *F.V. AND MATCH EXISTING WIDTH
U		5/8" GYP. BD. ON 1/2" FURRING CHANNELS @ 24" O.C. 6" C.M.U.* (OR EXISTING C.M.U.)	SEAL TO UNDERSIDE OF ROOF DECK/STRUCTURE, SEE 1 & 3/M-A5.1 *F.V. AND MATCH EXISTING WIDTH
V		EXISTING WALL 8" C.M.U. UP TO 11'-8" - USE BULLNOSE CORNER UNIT AT ENDS & REMOVE INTERIOR CELLS AS NEEDED FOR PLUMBING PIPING	USE 1/2" C.M.U. STACKED IN VERTICAL POSITION W/ BULLNOSE EDGE AT TOP OF WALL ROUTE PIPING THROUGH EXISTING WALL FROM/INTO FLENUM

**NOTE:**  
ON ALL FIRE RATED/SMOKE WALLS, STENCIL THE FOLLOWING ABOVE THE CEILING & ON EXPOSED WALLS OF RATED ROOMS:  
X FIRE AND/OR SMOKE RATED SEPARATION - PROTECT ALL OPENINGS  
STENCIL SHALL BE INSTALLED ON BOTH SIDES OF WALL 15" FROM THE END OF EACH WALL & AT INTERVALS NOT EXCEEDING 50'. IDENTIFICATION SHALL BE ABOVE ANY DECORATIVE CEILING & IN ACCESSIBLE CONCEALED SPACES. LETTERING SHALL BE A MINIMUM OF 3" IN HEIGHT. SUBSTITUTE "X" W/ THE REQUIRED RATING OF THE WALL CONTAINING THE NOTICE. COMPLY W/ THE INTERNATIONAL FIRE CODE, SECTION 708.7 AS DIRECTED BY THE LOCAL BUILDING AUTHORITY FOR THE LOCATION OF THE FIRE RATED/SMOKE WALLS. SEE REFLECTED CEILING PLANS & SHEET B-A5.1

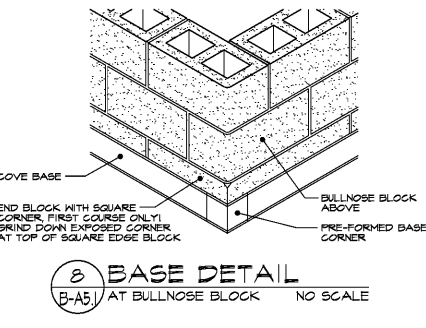
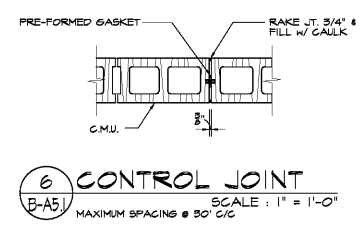
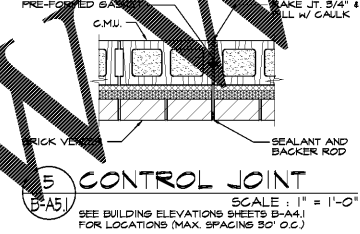
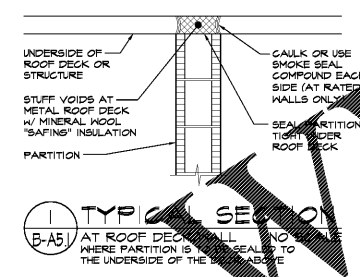
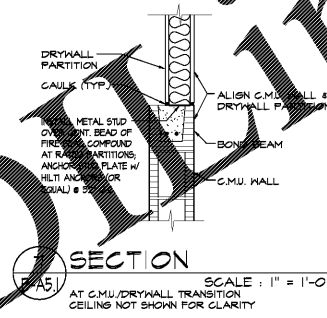
**ABBREVIATIONS:**  
(THIS SHEET ONLY)  
C.M.U. - Concrete Masonry Unit  
Conc. - Concrete  
E.B.C. - Epoxy Based Coating  
G.B. - Gypsum Board  
M.R. - Moisture Resistant  
S.A.T. - Suspended Acoustical Tile  
S.E.F. - Quartz Epoxy Flooring  
S.M.T. - Suspended Masonable Tile

## WALL SCHEDULE GENERAL NOTES:

- SEE LIFE SAFETY PLAN SHEETS 201.1, 201.2, REFLECTED CEILING PLANS, SHEETS B-A5.1 & B-A5.2 FOR REQUIRED FIRE/SMOKE RATINGS ON ALL WALLS.
- WHEREVER A PARTITION DOES NOT GO TO THE UNDERSIDE OF THE ROOF DECK, THE WALL OR THE PARTITION SHALL BE AT LEAST 1" FROM THE ROOF DECK ON EITHER SIDE.
- ALL WALLS NOT IDENTIFIED ARE TO BE TYPE "D" (CONCRETE) OR "E" (DRY WALL).
- SEE STRUCTURAL DRAWINGS FOR MASONRY WALL REINFORCEMENT.

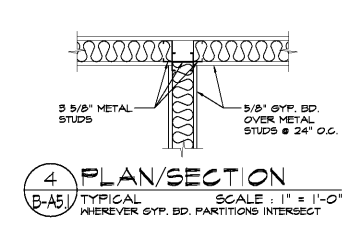
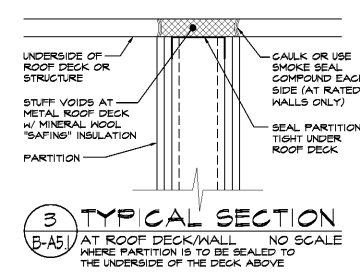
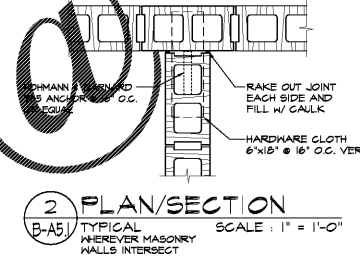
## MASONRY WALL CONTROL JOINT NOTES:

- PROVIDE CONTROL JOINTS AT 1/3 x HEIGHT INTERVALS (MAX. SPACING LENGTH BETWEEN JOINTS).
- PROVIDE CONTROL JOINTS NEAR CORNERS AT SPACING EQUAL TO 1/3 THE CONTROL JOINT SPACING (SEE PREVIOUS NOTE #A).
- PROVIDE CONTROL JOINTS ON SINGLE SIDE OF OPENINGS (DOOR & WINDOWS) UNDER 6 FEET WIDE.
- PROVIDE CONTROL JOINTS ON BOTH SIDES OF OPENINGS (DOOR & WINDOWS) OVER 6 FEET WIDE.
- PROVIDE CONTROL JOINTS AT PERPENDICULAR WALL INTERSECTIONS & WALL HEIGHT CHANGES.



# ROOM FINISH SCHEDULE

NO.	SPACE NAME	FLOOR	BASE	WALLS		CEILING		REMARKS	SPACE NO.	
				MATERIAL	FINISH	MATERIAL	HEIGHT			FINISH
200	Lobby	Conc.*	Rubber	S.B.	Paint	S.A.T.	9'-0"	-	*Seal Concrete Floor	200
201	Files	Conc.*	Rubber	S.B.	Paint	S.A.T.	9'-0"	-	*Seal Concrete Floor	201
202	MDF	Conc.*	Rubber	S.B.	Paint	Exposed	-	Paint	Plywood up to 8'-0" A.F.F.; *Seal Concrete Floor	202
203	Conference Room	Conc.*	Rubber	S.B.	Paint	S.A.T.	9'-0"	-	*Seal Concrete Floor	203
204	Corridor	Conc.*	Rubber	S.B.	Paint	S.A.T.	9'-0"	-	*Seal Concrete Floor	204
205	Janitor's Closet	Seamless	Seamless	C.M.U.	E.S.C.	S.W.T.	9'-0"	-	*Seal Concrete Floor	205
206	Women's Locker	Seamless	Seamless	C.M.U.	E.S.C.	S.W.T.	9'-0"	-	*Seal Concrete Floor	206
207	Men's Locker	Seamless	Seamless	C.M.U.	E.S.C.	S.W.T.	9'-0"	-	*Seal Concrete Floor	207
208	PCS Parts Storage	Conc.*	-	Existing	Paint	Exposed	-	Paint	*Seal Concrete Floor	208
208.1	Mezzanine	Conc.*	-	Existing	Paint	Exposed	-	Paint	*Seal Concrete Floor	208.1
209	Tire/Fleet Shop	Conc.**	-	Existing	Paint	Exposed	-	Paint	**Epoxy Coating on Floor (Alternate #4)	209
209.1	Passage	Conc.*	-	Existing	Paint	S.A.T.	11'-0"	-	**Epoxy Coating on Floor (Alternate #4)	209.1
210	Passage	Conc.*	Rubber	C.M.U.	Paint	S.A.T.	9'-0"	-	*Seal Concrete Floor	210
211	Fuel Control Room	Conc.*	Rubber	Existing C.M.U.	Paint	S.A.T.	9'-0"	-	*Seal Concrete Floor	211
212	Storage Room	Conc.*	Rubber	Existing C.M.U.	Paint	S.A.T.	9'-0"	-	*Seal Concrete Floor	212
213	Break Room	Conc.*	Rubber	S.B.	Paint	S.A.T.	9'-0"	-	*Seal Concrete Floor	213
214	Electronic Technician	Conc.*	Rubber	Existing C.M.U.	Paint	S.A.T.	9'-0"	-	*Seal Concrete Floor	214
214.1	Closet	Conc.*	Rubber	Existing C.M.U.	Paint	S.A.T.	9'-0"	-	*Seal Concrete Floor	214.1
215	Manager's Office	Conc.*	Rubber	Existing C.M.U.	Paint	S.A.T.	9'-0"	-	*Seal Concrete Floor	215
215.1	Closet	Conc.*	Rubber	Existing C.M.U.	Paint	S.A.T.	9'-0"	-	*Seal Concrete Floor	215.1
216	Supervisor's Office	Conc.*	Rubber	Existing C.M.U.	Paint	S.A.T.	9'-0"	-	*Seal Concrete Floor	216
217	Parts Storage	Conc.*	-	Existing	Paint	Exposed	-	Paint	*Seal Concrete Floor	217
218	Parts Counter	Conc.*	Rubber	Existing C.M.U.	Paint	S.A.T.	9'-0"	-	*Seal Concrete Floor	218
219	Parts Office	Conc.*	Rubber	Existing C.M.U.	Paint	S.A.T.	9'-0"	-	*Seal Concrete Floor	219
219.1	Closet	Conc.*	Rubber	Existing C.M.U.	Paint	S.A.T.	9'-0"	-	*Seal Concrete Floor	219.1
220	Storage Room	Conc.*	-	Existing	Paint	Exposed	-	Paint	*Seal Concrete Floor	220
221	Battery Storage	Conc.*	-	Existing	Paint	Exposed	-	Paint	*Seal Concrete Floor	221
222	Antifreeze Storage	Conc.*	-	Existing	Paint	Exposed	-	Paint	*Seal Concrete Floor	222
223	Bus Shop	Conc.**	-	Existing	Paint	Exposed	-	Paint	**Epoxy Coating on Floor (Alternate #4)	223
224	Toilet Room	Seamless	Seamless	C.M.U.	E.S.C.	M.R.G.B.	-	E.S.C.	*Seal Concrete Floor	224
225	Luvs Room	Conc.*	-	Existing	Paint	Exposed	-	Paint	*Seal Concrete Floor	225
226	Electrical Room	Conc.*	-	Existing	Paint	Exposed	-	Paint	See 14/B-A6.1 for Housekeeping Base; *Seal Concrete Floor	226
227	Compressor Room	Conc.*	-	Existing	Paint	Exposed	-	Paint	*Seal Concrete Floor	227
228	Electrical Room	Conc.*	-	Existing	Paint	Exposed	-	Paint	See 14/B-A6.1 for Housekeeping Base; *Seal Concrete Floor	228
229	Wash Bay	Conc.*	-	Existing	Paint	Exposed	-	Paint	Paint Exposed Steel Structure; *Seal Concrete Floor	229
230	Wash Equipment	Conc.*	-	Existing	Paint	M.R.G.B.	-	Paint	*Seal Concrete Floor	230
231	Sprinkler	Conc.*	-	Existing	Paint	Exposed	-	Paint	*Seal Concrete Floor	231
232	Mechanical Room	Conc.*	-	Existing	Paint	Exposed	-	Paint	*Seal Concrete Floor	232



Order Plans

SOUTH TRANSPORTATION & MAINTENANCE FACILITY  
 FACILITIES AND TRANSPORTATION SERVICES DEPARTMENT  
 FULTON COUNTY, GEORGIA  
 FULTON COUNTY BOARD OF EDUCATION

**Sy. Richards, Architect, Inc.**  
 ARCHITECTS  
 MONROE, GEORGIA

SHEET TITLE: WALL & FINISH SCHEDULES  
 DATE: June 22, 2018  
 DRAWN BY: CL / KT  
 CHECKED BY: [Blank]  
 ISSUE FOR: Proposal

NO. DATE REVISION  
 [Blank]

B-A5.1  
 of 26