

NO. DATE REVISION

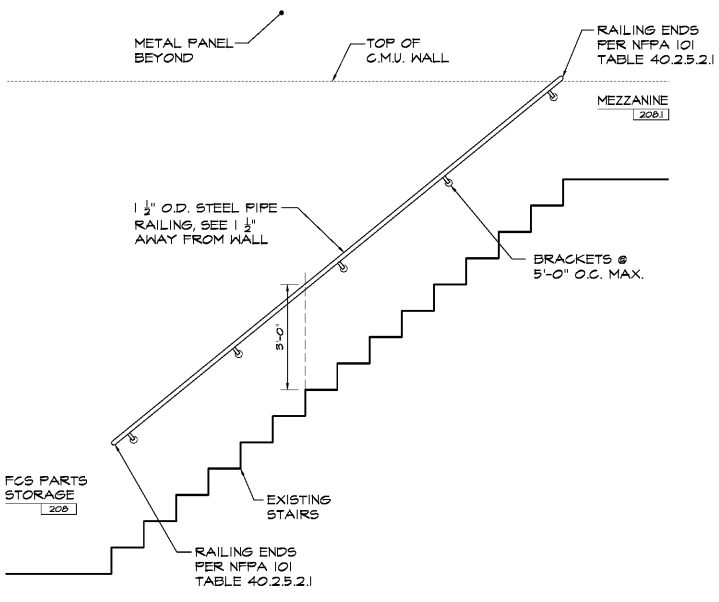
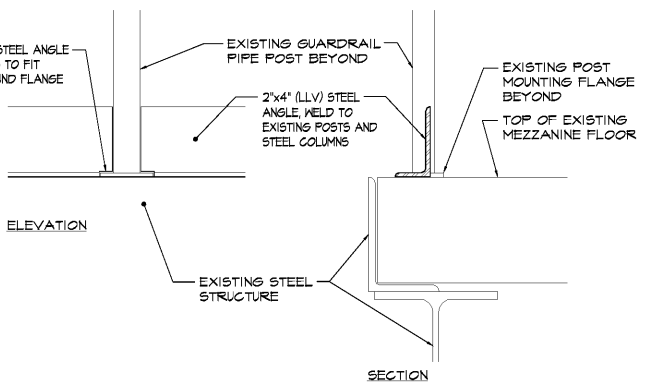
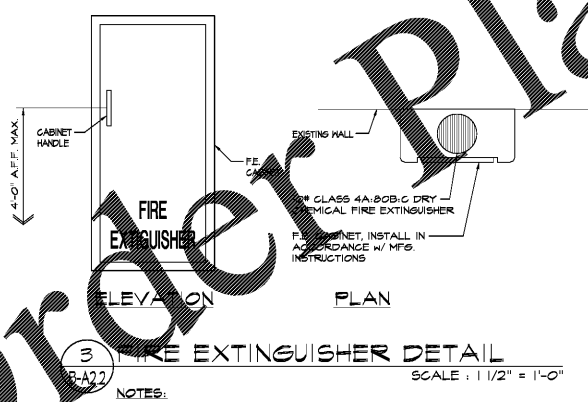
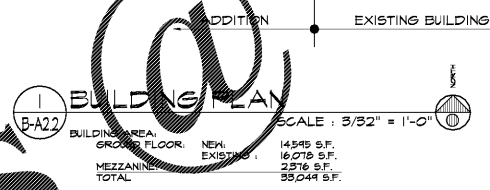
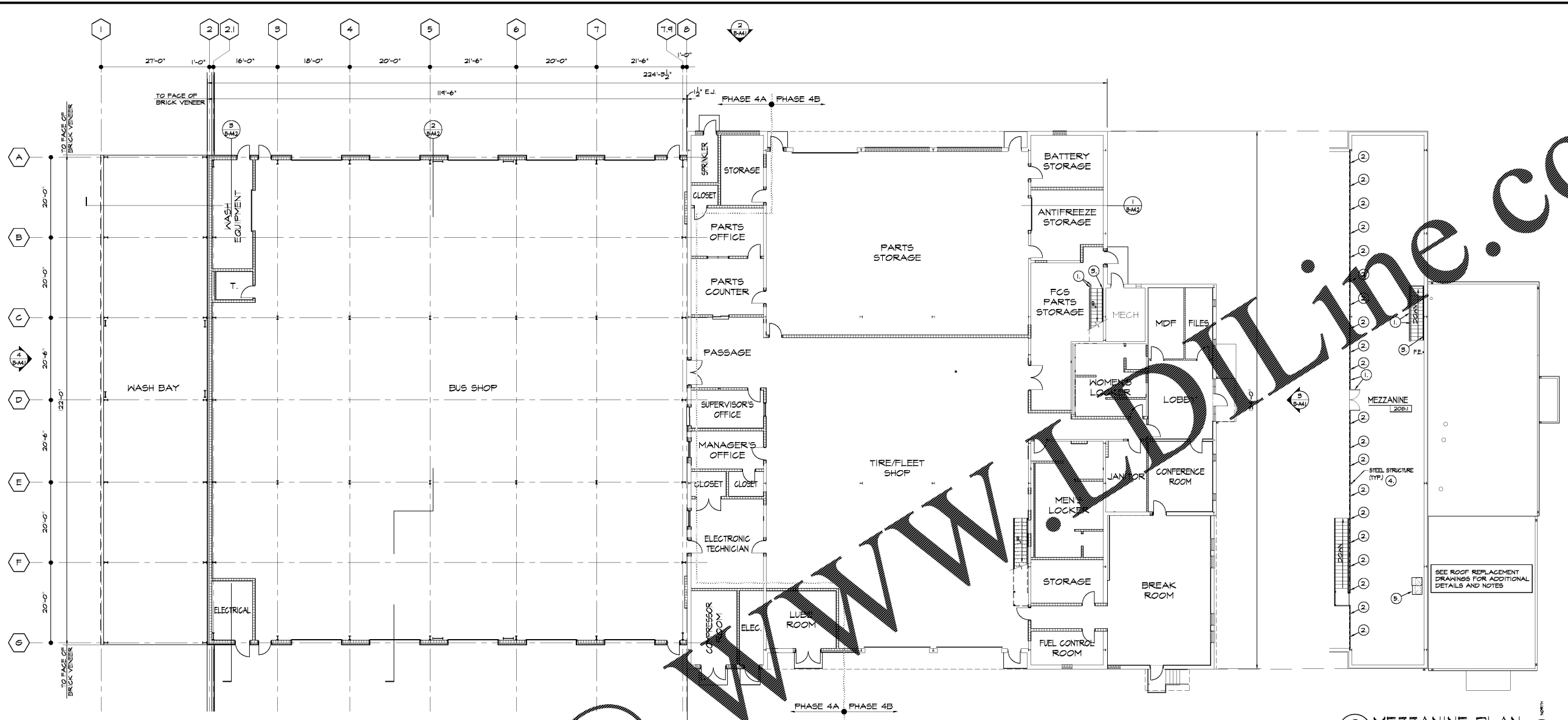
NO.	DATE	REVISION

**SOUTH TRANSPORTATION & MAINTENANCE FACILITY**  
 FACILITIES AND TRANSPORTATION SERVICES DEPARTMENT  
 FULTON COUNTY, GEORGIA  
 FULTON COUNTY BOARD OF EDUCATION

**St. Richards, Architect, Inc.**  
 GEORGIA  
 MONROE

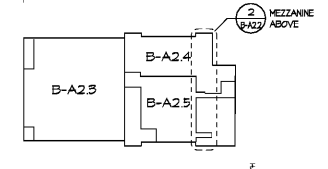


SHEET TITLE  
**BUILDING PLAN**  
 DATE  
 June 22, 2016  
 DRAWN BY  
 CL / KT  
 SHEET  
**B-A2.2**  
 OF 26  
 ISSUED FOR  
 Proposal



**MEZZANINE NOTES:**  
 (THIS SHEET ONLY)  
 1. PAINT EXISTING GUARDRAIL, GATE, COMPONENTS, POSTS, AND RAILING.  
 2. INSTALL 2"x4" (LLV) STEEL ANGLE TOEBOARD. SEE 4/B-A2.2.  
 3. ADD RAILING, SEE 5/B-A2.2.  
 4. PAINT EXPOSED STEEL STRUCTURE.  
 5. MECHANICAL UNIT, SEE MECHANICAL DRAWINGS.

**LEGEND:**  
 --- EXISTING TO REMAIN  
 [---] BRICK VENEER  
 [---] C.M.U. PARTITIONS  
 [---] DRYWALL PARTITIONS  
 --- DIMENSION TO CENTERLINE OF PARTITION/FIXTURE  
 --- DIMENSION TO FACE OR CENTERLINE OF PARTITION/WINDOW/DOOR  
 --- DIMENSION TO COLUMN LINE



Order Plans @ www.LDOnline.com