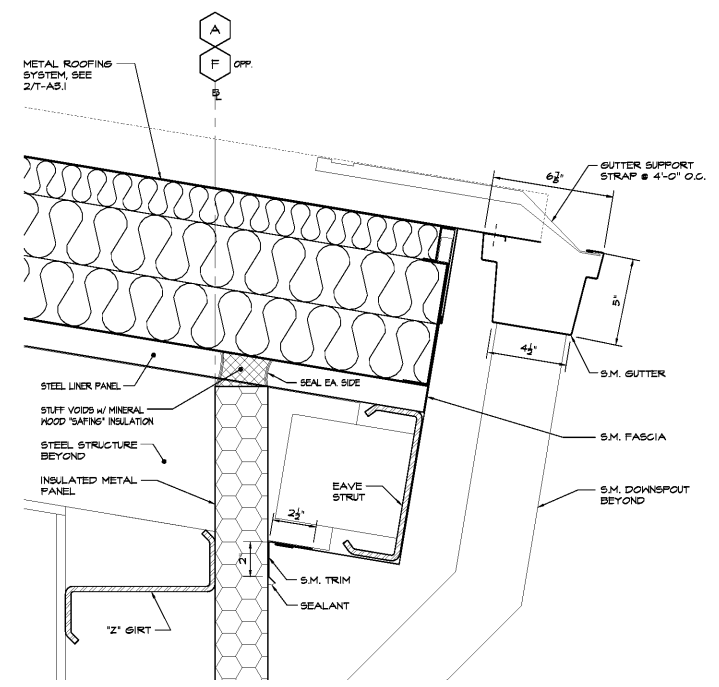
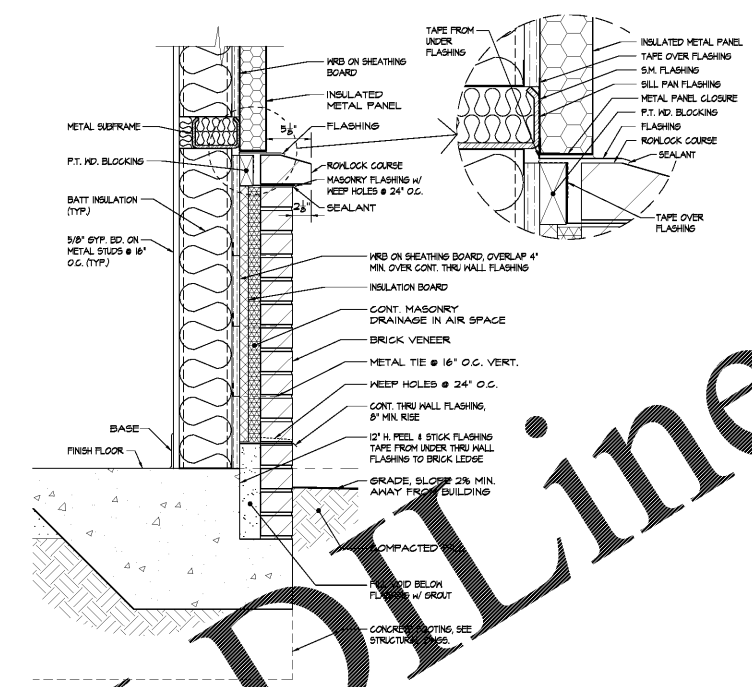


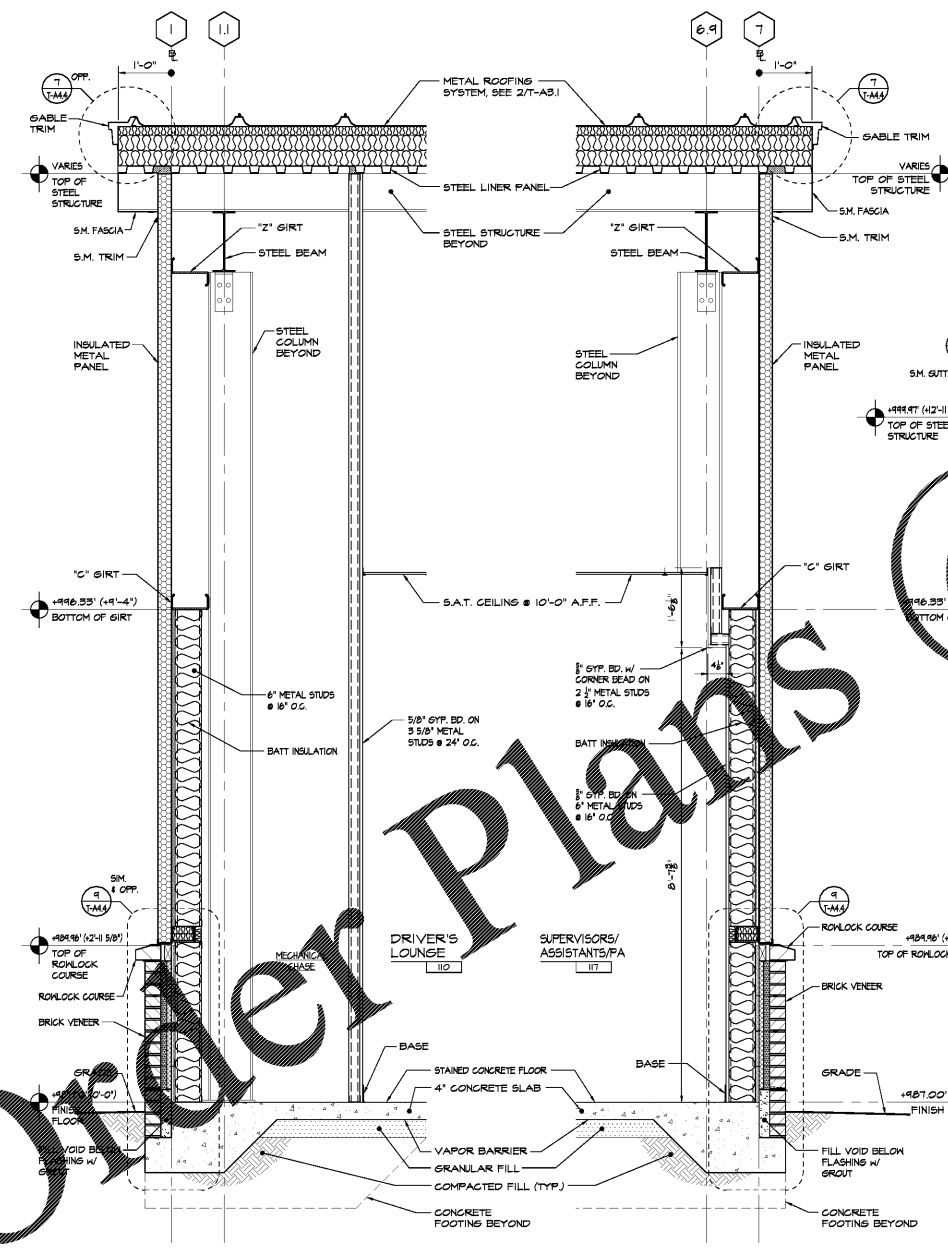
7 ROOF SECTION  
T-A4.4 SCALE: 3" = 1'-0"



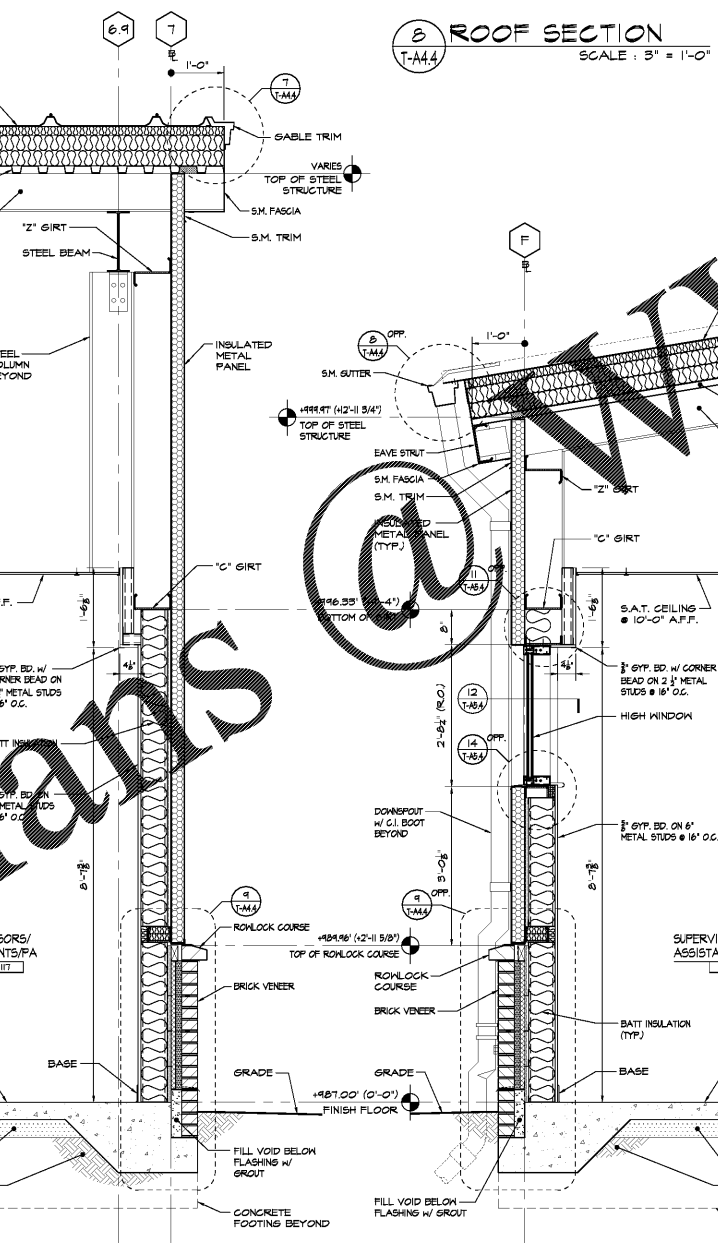
8 ROOF SECTION  
T-A4.4 SCALE: 3" = 1'-0"



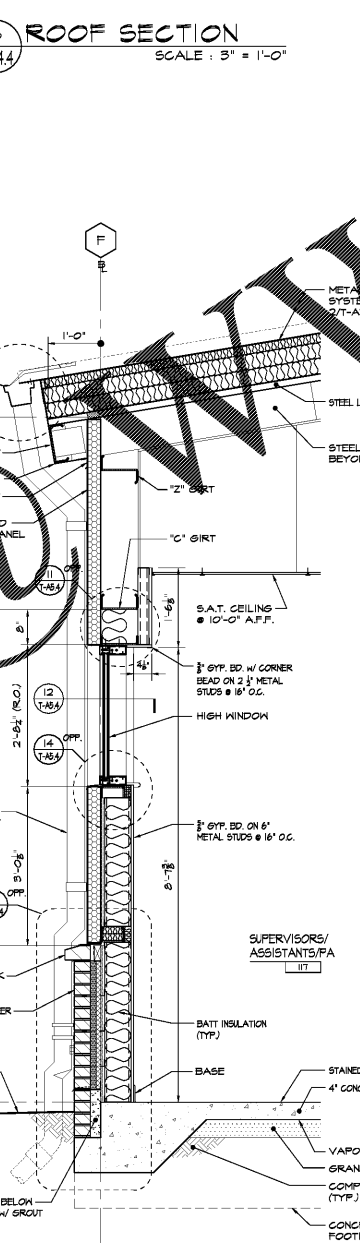
9 WALL FLASHING DETAIL  
T-A4.4 SCALE: 1 1/2" = 1'-0"



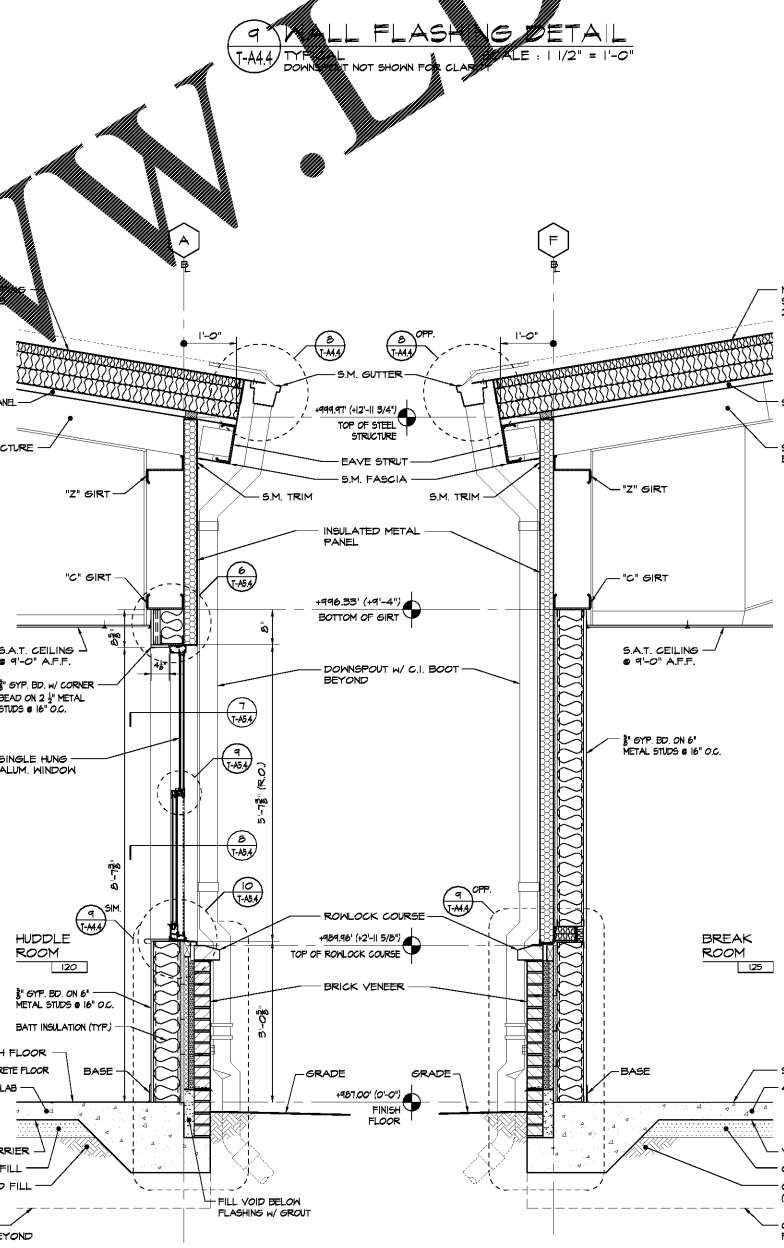
1 WALL SECTION  
T-A4.4 SCALE: 3/4" = 1'-0"



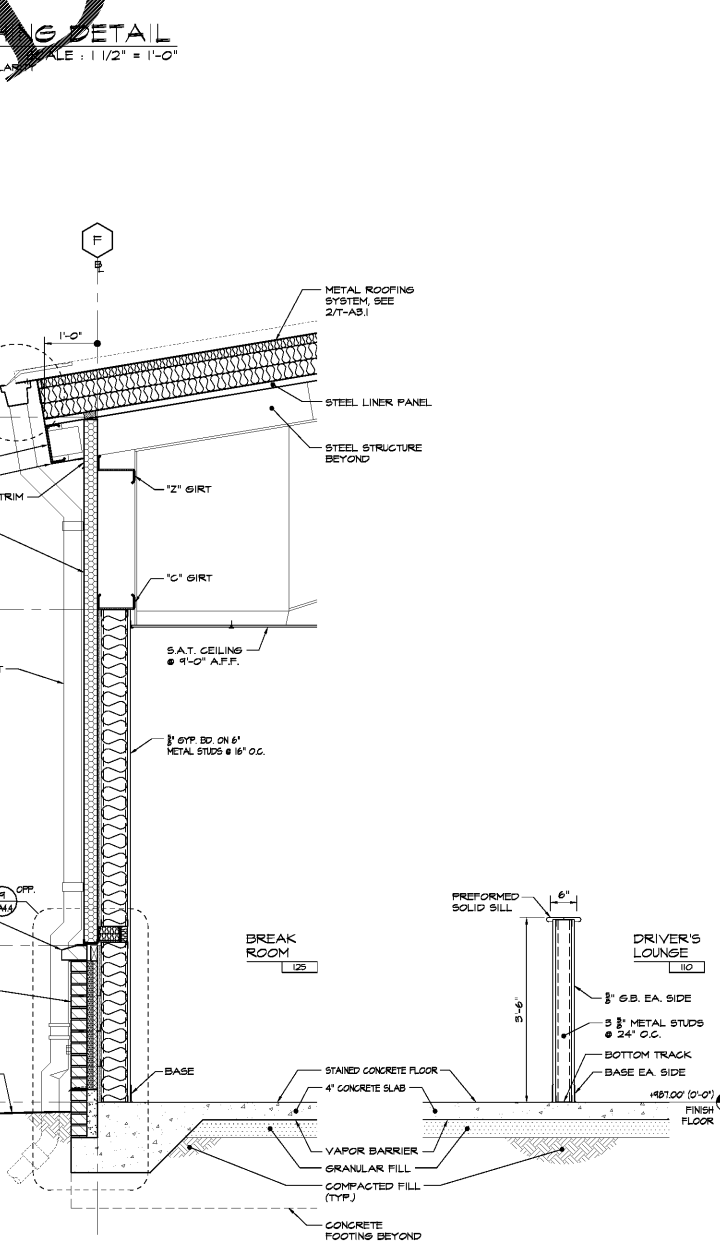
2 WALL SECTION  
T-A4.4 SCALE: 3/4" = 1'-0"



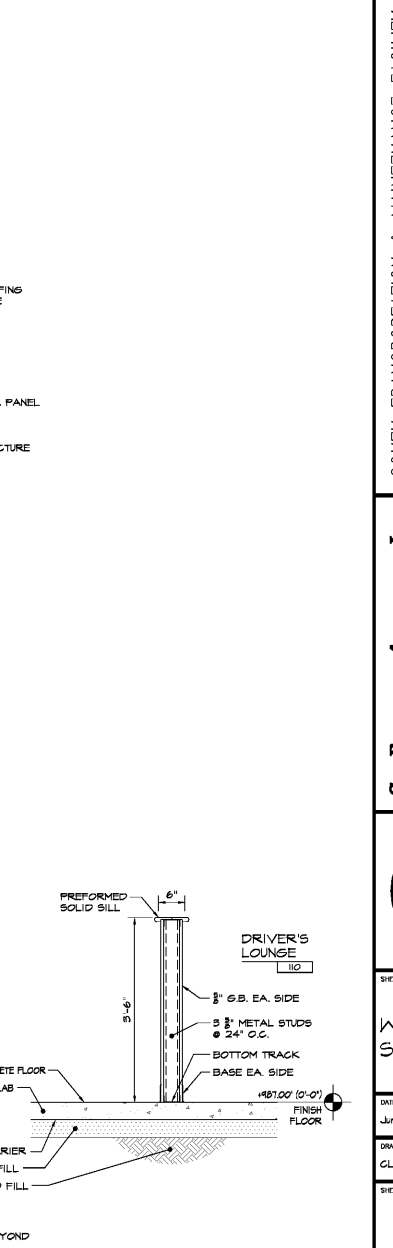
3 WALL SECTION  
T-A4.4 SCALE: 3/4" = 1'-0"



4 WALL SECTION  
T-A4.4 SCALE: 3/4" = 1'-0"



5 WALL SECTION  
T-A4.4 SCALE: 3/4" = 1'-0"



6 WALL SECTION  
T-A4.4 SCALE: 3/4" = 1'-0"

SOUTH TRANSPORTATION & MAINTENANCE FACILITY  
 FACILITIES AND TRANSPORTATION SERVICES DEPARTMENT  
 FULTON COUNTY, GEORGIA  
 FULTON COUNTY BOARD OF EDUCATION

ST. RICHARDS, ARCHITECT, INC.  
 MONROE, GEORGIA

SHEET TITLE  
 WALL SECTIONS

DATE  
 June 22, 2018

DRAWN BY  
 GL / KT

SHEET  
 T-A4.4

OF 20  
 ISSUED FOR  
 Proposal

NO.	DATE	REVISION