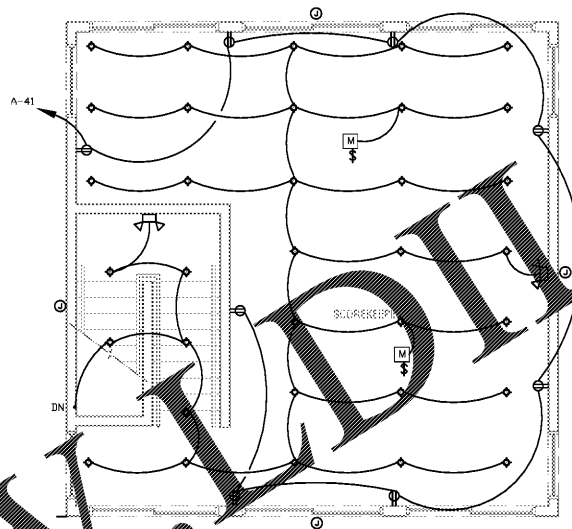


Order Plans @ WWW.WWOnline.com



SECOND FLOOR PLAN-ELECTRICAL
1/4"=1'-0"

- 1 RUN 1/2" CONDUIT FROM THIS LOCATION TO ELECTRICAL ROOM FOR FUTURE FIELD LIGHT. (COORDINATE EXACT LOCATION WITH OWNER)
- M MOTION DETECTOR-OPERATE LIGHT WITH BYPASS SWITCH

This Document is the property of Carter Watkins Associates. Reproduction or any part is prohibited under Federal Copyright Laws.

DATE: 04/19/18

REVISIONS					
Number	Date	Remarks	Number	Date	Remarks
X	00-00-00	N/A			

CONSULTANTS
Date Plotted: Apr 19, 2018 - 12:18pm
File: 2018-03293.DWG

ATLANTA MANAGEMENT AND ENGINEERING CONSULTANTS, INC.
200 LULLWATER PLACE, LAWRENCEVILLE, GA 30046
TEL: 770-962-1144 FAX: 770-962-1145
WWW.AME-CA.COM

CARTER WATKINS ASSOCIATES ARCHITECTS, INC.
POST OFFICE BOX 1004
117 EAST WASHINGTON STREET
MONROE, GEORGIA 30655
TEL: 770-267-1064
EMAIL: cwa@carterwatkins.com www.carterwatkins.com



DOUGLAS COUNTY BOUNDARY WATERS PARK CONCESSION STAND
DOUGLASVILLE, GEORGIA

SHEET TITLE: SECOND FLOOR PLAN -ELECTRICAL	NUMBER: E-3
PRINTED: 04/19/18	

PRINTED