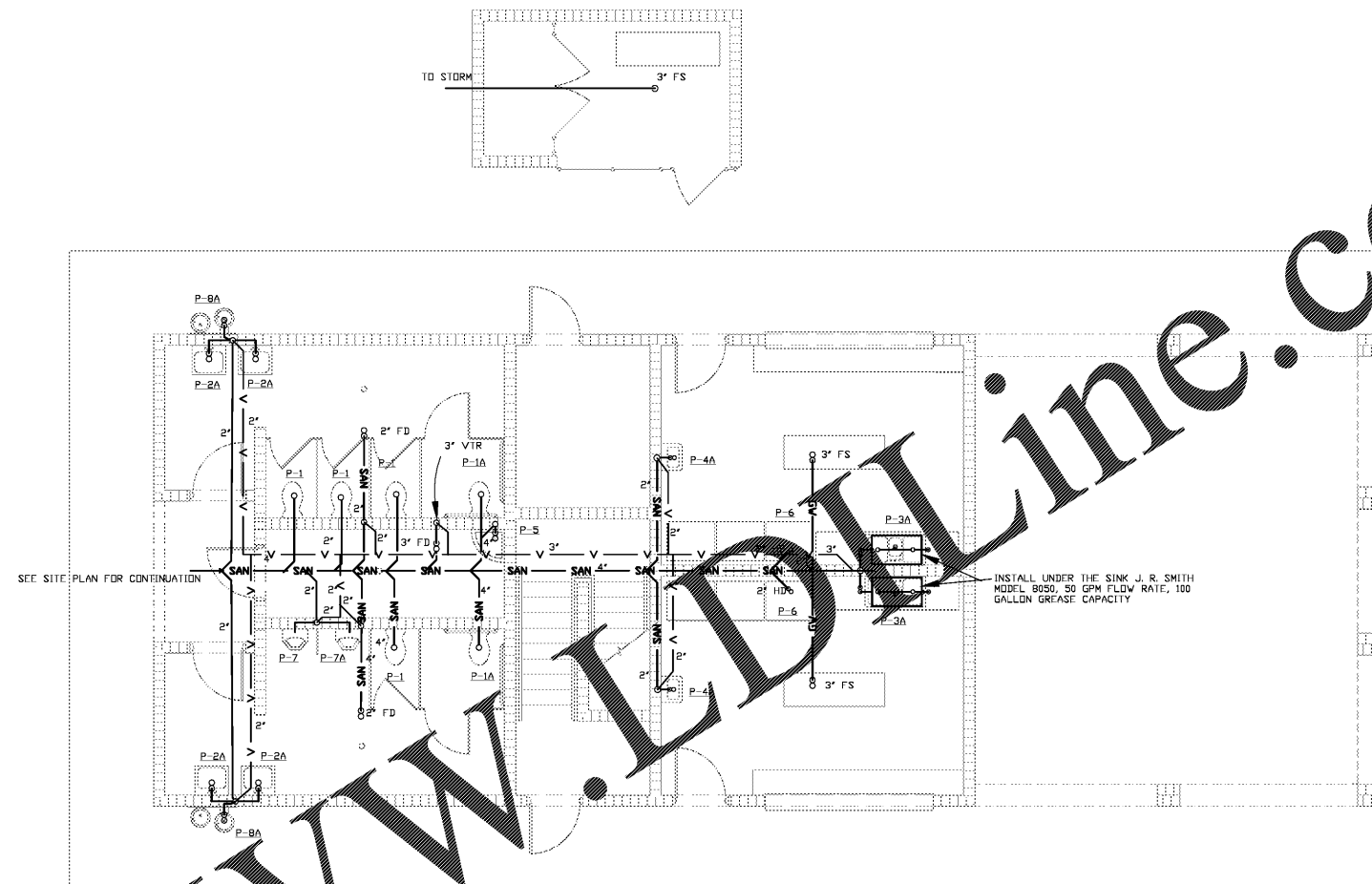


PLUMBING FIXTURE SCHEDULE

PROVIDE IN ALL PUBLIC BATHROOM HOSE BIB UNDER THE LAVATORY FOR HOUSEKEEPING PURPOSES.

|            |   |
|------------|---|
| P-1        | FLOOR MOUNTED WATER CLOSETS (FLUSH VALVE TYPE), BATTERY OPERATED  |
| FIXTURE    | 3451.528 "AMERICAN STANDARD" 15" HIGH ELONGATED MADERA FLOWWISE 128 GPF VITREOUS CHINA WATER SAVER, SIPHON JET FLUSHING ACTION, 1 1/2" TOP SPUD SUPPLY, INLET SPUD BOLTS, AND CAPS. WATER SENSE   |
| SEAT       | 521/5905.100 "BENEKE/AMERICAN STANDARD" EXTRA HEAVY DUTY SOLID PLASTIC SEAT WITHOUT COVER.  |
| SUPPLY     | 6065.121 "AMERICAN STANDARD" SELECTRONIC BATTERY OPERATED FLUSH VALVE.  |
| P-1        | FLOOR MOUNTED WATER CLOSETS (FLUSH VALVE TYPE), AC POWER  |
| FIXTURE    | 3451.712 "AMERICAN STANDARD" 15" HIGH ELONGATED MADERA FLOWWISE 128 GPF VITREOUS CHINA WATER SAVER, SIPHON JET FLUSHING ACTION, 1 1/2" TOP SPUD SUPPLY, INLET SPUD BOLTS, AND CAPS. WATER SENSE   |
| SEAT       | 521/5905.100 "BENEKE/AMERICAN STANDARD" EXTRA HEAVY DUTY SOLID PLASTIC SEAT WITHOUT COVER.  |
| SUPPLY     | 6067.121 "AMERICAN STANDARD" SELECTRONIC AC POWERED FLUSH VALVE, 128 GPF  |
| P-1A       | FLOOR MOUNTED WATER CLOSETS (FLUSH VALVE TYPE) (HANDICAP), BATTERY OPERATED   |
| FIXTURE    | 3461.528 "AMERICAN STANDARD" 16" HIGH ELONGATED MADERA FLOWWISE 128 GPF VITREOUS CHINA WATER SAVER, SIPHON JET FLUSHING ACTION, 1 1/2" TOP SPUD SUPPLY, BOLTS, AND CAPS. WATER SENSE  |
| SEAT       | 521/5905.100 "BENEKE/AMERICAN STANDARD" EXTRA HEAVY DUTY SOLID PLASTIC SEAT WITHOUT COVER.  |
| SUPPLY     | "AMERICAN STANDARD" SELECTRONIC BATTERY OPERATED FLUSH VALVE, 128 GPF   |
| ALTERNATE: |   |
| P-1A       | FLOOR MOUNTED WATER CLOSETS (FLUSH VALVE TYPE) (HANDICAP), AC POWERED   |
| FIXTURE    | 3043.712 "AMERICAN STANDARD" 16" HIGH ELONGATED MADERA FLOWWISE 128 GPF VITREOUS CHINA WATER SAVER, SIPHON JET FLUSHING ACTION, 1 1/2" TOP SPUD SUPPLY, BOLTS, AND CAPS. WATER SENSE  |
| SEAT       | 521/5905.100 "BENEKE/AMERICAN STANDARD" EXTRA HEAVY DUTY SOLID PLASTIC SEAT WITHOUT COVER.  |
| SUPPLY     | 6067.121 "AMERICAN STANDARD" SELECTRONIC AC POWERED FLUSH VALVE, 128 GPF  |
| P-2A       | 20" x 18" WALL HUNG LAVATORY (HANDICAP)   |
| FIXTURE    | 4869.004 "AMERICAN STANDARD" REGALYN WHITE CAST IRON, PORCELAIN, WALL HANGER, 4" ON CENTER FAUCET HOLES, FRONT OVERFLOW AND INTEGRAL BACK.  |
| FAUCETS    | 6056.202 "AMERICAN STANDARD" INNSBROOK ELECTRONIC FAUCET WITH PROXIMITY OPERATION, VANDAL RESISTANT SOLID BRASS CONSTRUCTION, ONE 6056.202 AC-PLUG IN POWER SUPPLY FEEDS UP TO 15 6057.202 INNSBROOKS' W/O POWER, INTEGRAL IN-LINE SOLENOID STRAINER, BUILT-IN CHECKS, FLEXIBLE STAINLESS STEEL 20" INLET HOSE FOR SPOUT CONNECTION SINGLE INLET 3/8 COMPRESSION. |
| FAUCETS    | 6053.202 "AMERICAN STANDARD" INNSBROOK ELECTRONIC FAUCET (BATTERY OPERATED) WITH PROXIMITY OPERATION, VANDAL RESISTANT SOLID BRASS CONSTRUCTION, ONE INTEGRAL IN-LINE SOLENOID STRAINER, BUILT-IN CHECKS, FLEXIBLE STAINLESS STEEL 20" INLET HOSE FOR SPOUT CONNECTION SINGLE INLET 3/8 COMPRESSION.  |
| DRAIN      | SG7VC "EBC" OFFSET DRAIN WITH BRASS PERFORATED GRID DRAIN.<br>MCGUIRE 155WC OR P-2125 PRO WRAP FACTORY INSULATED.   |
| TRAP       | TA125 "EBC" 1 1/4" P TRAP WITH CAST BRASS NUTS AND CLEANOUTS PLUG.<br>8872C "MCGUIRE"   |
| SUPPLY     | VA13 LF165 "EBC" "MCGUIRE"  |
|            | HANDI LAV-GUARD INSULATION KIT.<br>LAVATORY WALL HUNG SUPPORT:<br>JAY R. SMITH FIG. #700 FOR MASONRY WALLS AND #700-M31 FOR METAL OR WOOD STUD WALLS.   |
| P-2        | 20" x 18" WALL HUNG LAVATORY.   |
| FIXTURE    | 4869.004 "AMERICAN STANDARD" CAST IRON, PORCELAIN, FRONT OVERFLOW AND INTEGRAL BACK.  |
| FAUCETS    | 6056.202 "AMERICAN STANDARD" INNSBROOK ELECTRONIC FAUCET WITH PROXIMITY OPERATION, VANDAL RESISTANT SOLID BRASS CONSTRUCTION, ONE 6056.202 AC-PLUG IN POWER SUPPLY FEEDS UP TO 15 6057.202 INNSBROOKS' W/O POWER, INTEGRAL IN-LINE SOLENOID STRAINER, BUILT-IN CHECKS, FLEXIBLE STAINLESS STEEL 20" INLET HOSE FOR SPOUT CONNECTION SINGLE INLET 3/8 COMPRESSION. |
| FAUCETS    | 6053.202 "AMERICAN STANDARD" INNSBROOK ELECTRONIC FAUCET (BATTERY OPERATED) WITH PROXIMITY OPERATION, VANDAL RESISTANT SOLID BRASS CONSTRUCTION, ONE INTEGRAL IN-LINE SOLENOID STRAINER, BUILT-IN CHECKS, FLEXIBLE STAINLESS STEEL 20" INLET HOSE FOR SPOUT CONNECTION SINGLE INLET 3/8 COMPRESSION.  |
| DRAIN      | SG7VC "EBC" OFFSET DRAIN WITH BRASS PERFORATED GRID DRAIN.<br>MCGUIRE 155WC OR P-2125 PRO WRAP FACTORY INSULATED.   |
| TRAP       | TA125 "EBC" 1 1/4" P TRAP WITH CAST BRASS NUTS AND CLEANOUTS PLUG.<br>8872C "MCGUIRE"   |

|                           |  |
|---------------------------|--|
| SUPPLY                    | VA13 LF165 "EBC" "MCGUIRE"   |
|                           | HANDI LAV-GUARD INSULATION KIT.<br>LAVATORY WALL HUNG SUPPORT:<br>JAY R. SMITH FIG. #700 FOR MASONRY WALLS AND #700-M31 FOR METAL OR WOOD STUD WALLS.  |
| P-3A                      | 3-COMPARTMENT SINK   |
| FIXTURE                   | BY OTHERS AND INSTALLED BY PLUMBER   |
| VALVE                     | BY OTHERS  |
| TRAP                      | TA150 "EBC" 1 1/2" P TRAP WITH CAST BRASS NUTS AND CLEANOUTS PLUG.   |
| SUPPLY                    | VA13 LF165 "EBC" "MCGUIRE"   |
| P-4A                      | HAND SINK  |
| FIXTURE                   | BY OTHERS AND INSTALLED BY PLUMBER   |
| VALVE                     | BY OTHERS  |
| TRAP                      | TA125 "EBC" 1 1/4" P TRAP WITH CAST BRASS NUTS AND CLEANOUTS PLUG.   |
| SUPPLY                    | VA13 LF165 "EBC" "MCGUIRE"   |
| P-5                       | MOP SINK (SERVICE SINK)  |
| FIXTURE                   | MSB 2424 FIAT MODEL 24 X 24 X10. A COMBINATION DOME STRAINER AND LINT BASKET MADE FROM STAINLESS STEEL.  |
| FAUCET                    | PLATE NO. B30-AA FIAT CHROME PLATED WITH VACUUM BREAKER, INTEGRAL STOPS, ADJUSTABLE WALL BRACKET, PAUL HOSE AND 3/4" HOSE THREAD ON SPOUT.   |
| HOSE AND AND HOSE BRACKET | PLATE NO. B32-AA 30" HOSE.   |
| MOP HANGER                | PLATE NO. B89-C MOP HANGER 24"   |
| P-6                       | ICE MACHINE  |
| FIXTURE                   | BY OTHERS AND INSTALLED BY PLUMBER   |
| FIXTURE                   | 200-1K "JAMCO" ICEMAKER CONNECTOR BOX KIT WITH BRASS VALVE ASSEMBLY, MOLDED STURDY FACEPLATE AND SCREWS.   |
| P-7A/P-7                  | WALL HUNG URINAL - HANDICAP WATER LESS   |
| FIXTURE                   | 6150.100 "AMERICAN STANDARD" FLOWWISE WATERLESS URINAL, VITREOUS CHINA, DRAIN INSERT, MOUNTING HARDWARE, WALL BRACKET, DRAIN FLANGE COUPLER, ODOR BARRIER LIQUID, INSERT KEY, DRAIN INSERT   |
| FIXTURE                   | 6154.100 MEDIUM  |
| P-8A                      | ELECTRIC WATER COOLER SPLIT LEVEL (HANDICAP)   |
| FIXTURE                   | PGFBACSL "DASIS" SPLIT LEVEL ELECTRIC WALL HUNG COOLER SHALL DELIVER 8.0 GPH OF 50 DEGREE F WATER AT 90 DEGREE F AND 80 DEGREE F INLET WATER TEMPERATURE. 1/4 HP, 4.4 AMPS, 115/160 VOLTS  |
| SUPPLY                    | LA11 "EBC" SUPPLY TO WALL WITH WHEEL HANDLE AND FLEXIBLE RISER.  |
| TRAP                      | TA125 "EBC" 1-1/4" X 1-1/4" P-TRAP WITH CAST BRASS NUTS AND CLEANOUT PLUG  |
|                           | CO-EXPOSED CLEANOUT-UNFINISHED AREAS:<br>JAY R. SMITH FIG. 4470/MIFAB C1430 CAST BRONZE COUNTERSINK PLUG WITH SLOT TO RECEIVE 1/2" THICK STEEL BAR STOCK.  |
|                           | W/O-WALL CLEANOUT - FINISHED AREAS:<br>JAY R. SMITH FIG. 4426/MIFAB C1450-R-1 CAST IRON FERRULE FOR NO HUB DR SERVICE WEIGHT PIPE. NICKEL BRONZE ROUND FRAME AND COVER WITH SECURING SCREWS.   |
|                           | EQ-CONCRETE FLOORS:<br>JAY R. SMITH FIG. 4238L/MIFAB C1100-XR-P-4 CAST IRON CLEANOUT WITH GASKET SEAL, THREADED PLUG FOR EASY REMOVAL, ADJUSTABLE ROUND CAST IRON TOP WITH SECURING SCREWS. SPEEDI - SET OUTLET CONNECTION.  |
|                           | EQ-TILE FLOORS:<br>JAY R. SMITH FIG. 4151/MIFAB C1100-T-P-1 CAST IRON CLEANOUT WITH GASKET SEAL, THREADED PLUG FOR EASY REMOVAL, ADJUSTABLE ROUND NICKEL BRONZE TOP RECESSED FOR TILE WITH SECURING SCREWS. SPEEDI - SET OUTLET CONNECTION.                                    |
|                           | EQ-CARPETED FLOORS:<br>JAY R. SMITH FIG. 4021-Y/MIFAB C1100-Y-P-1 CAST IRON CLEANOUT WITH GASKET SEAL, THREADED PLUG FOR EASY REMOVAL, ADJUSTABLE ROUND NICKEL BRONZE TOP RECESSED FOR CARPET WITH SECURING SCREWS. SPEEDI - SET OUTLET CONNECTION.                            |
|                           | Y-TERMINAL PAD/CONCRETE AREA:<br>JAY R. SMITH FIG. 4261-M/MIFAB C1300-6 W/C2130 CAST IRON FLANGE HOUSING WITH HEAVY DUTY CAST IRON COVER, LIFTING DEVICE, GASKET SEAL, THREADED PLUG, V.P. SCREWS IN COVER. CLEANOUT SHALL BE SET IN 6" x 12" CONCRETE PAD FLOOR WITH SURFACE. |
|                           | 3" FD-FLOOR DRAINS:<br>JAY R. SMITH FIG. 2005A-03P050-BB/MIFAB F1100-C-1-7 ROUND TOP AND NO HUB OUTLET WITH TRAP PRIMER CONNECTION.  |
|                           | 2" FD-FLOOR DRAINS-REST. ROOMS/SHOWERS:<br>JAY R. SMITH FIG. 2010A-02P050-BB/MIFAB F1100X-C-1-7 ROUND TOP AND CAULK OUTLET WITH TRAP PRIMER CONNECTION.  |
|                           | 3" FS-FLOOR SINK<br>JAY R. SMITH FIG 3200, WITH SEDIMENT BUCKET<br>LAVATORY WALL HUNG SUPPORT:<br>JAY R. SMITH FIG. #700 FOR MASONRY WALLS AND #700-M31/MIFAB MC-41 FOR METAL OR WOOD STUD WALLS.  |



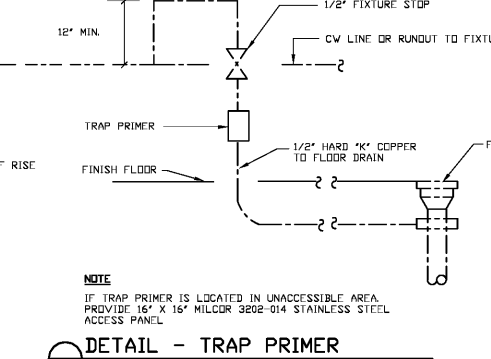
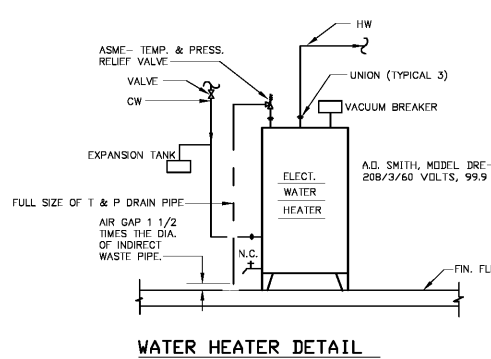
LEGEND

|          |  |    |                     |
|----------|--|----|---------------------|
| SAN      | SOIL AND WASTE PIPING                        | W  | WATER               |
| V        | VENT PIPING                                  | CV | COLD WATER PIPING   |
| WV       | WET WATER PIPING                             | HW | HOT WATER PIPING    |
| GW       | GREASE WASTE PIPING                          | GW | GREASE WASTE PIPING |
| GV       | GATE VALVE                                   | GV | GATE VALVE          |
| W        | WASTE  |    |                     |
| V.V.T.R. | VENT THROUGH ROOF                            |    |                     |
| F.D.     | FLOOR DRAIN                                  |    |                     |
| H.D.     | HUB DRAIN                                    |    |                     |
| T&P      | TEMPERATURE AND PRESSURE                     |    |                     |
| U.F.     | UNDER FLOOR SLAB                             |    |                     |
| W.H.A.   | WATER HAMMER ARRESTOR                        |    |                     |
| PI       | INDICATES EQUIPMENT NUMBER FOR PLUMBING ONLY |    |                     |

PLUMBING FIXTURE CONNECTION SCHEDULE

| SYMBOL | FIXTURE              | RUN OUT SIZES    | MTG. HT. | DESCRIPTION                        |
|--------|----------------------|------------------|----------|------------------------------------|
| P-1    | WATER CLOSET (FLUSH) | 3" 1 1/2"        | 15"      | 15" FLOOR TO RIM                   |
| P-1A   | WATER CLOSET (FLUSH) | 3" 1 1/2"        | 18"      | 18" FLOOR TO RIM (HANDICAPPED)     |
| P-2A   | LAVATORY (WALL)      | 1 1/4" 1/2" 1/2" | 29"      | 29" FLOOR TO BOTTOM OF APRON       |
| P-3A   | 3-COMP SINK          | 4" 1/2" 1/2"     | 29"      | INDIRECT WASTE TO GREASE TRAP      |
| P-4A   | HAND SINK            | 1 1/4" 1/2" 1/2" | 29"      | 29" FLOOR TO BOTTOM OF APRON       |
| P-5    | MOP SINK             | 3" 1/2" 1/2"     | -        | -                                  |
| P-6    | ICE MACHINE          | 2" 1/2"          | -        | -                                  |
| P-7    | URINAL               | 2" 3/4"          | 24"      | 24" FLOOR TO LIP                   |
| P-7A   | URINAL               | 2" 3/4"          | 17"      | 17" FLOOR TO LIP                   |
| P-8A   | DRINKING FOUNTAIN    | 1 1/2" 1/2"      | 36"      | 36" FLOOR TO TOP OF SPOUT-HANDICAP |

FIRST FLOOR PLAN-SANITARY  
1/4"=1'-0"



NOTE:  
IF TRAP PRIMER IS LOCATED IN UNACCESSIBLE AREA, PROVIDE 16" X 16" MILCOR 3208-014 STAINLESS STEEL ACCESS PANEL.

SCHEMATIC  
TRAP SEAL PRIMER SHALL BE PRECISION PLUMBING PRODUCTS, INC. MODEL P-2 FOR ONE (1) TWO (2) DRAIN WITH DISTRIBUTION UNIT, MODEL P-1 WITH DISTRIBUTION UNIT PRIMING THREE (3) TO EIGHT (8) DRAINS.

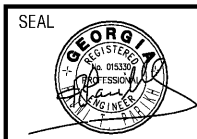
REVISIONS

| Number | Date     | Remarks | Number | Date | Remarks |
|--------|----------|---------|--------|------|---------|
| 1      | 00-00-00 | N/A     |        |      |         |

CONSULTANTS  
Date Plotted: Apr 19, 2018 - 12:49pm  
File: 2018-0207R.DWG

ATLANTA MANAGEMENT AND ENGINEERING CONSULTANTS, INC.  
200 LULLWATER PLACE, LAWRENCEVILLE, GA 30046  
TEL: 770-962-1142 FAX: 770-962-1143 WWW.AMEC.COM

CARTER WATKINS ASSOCIATES ARCHITECTS, INC.  
POST OFFICE BOX 1004  
137 EAST WASHINGTON STREET  
MONROE, GEORGIA 30665  
Tel: 770-267-1064  
email@carterwatkins.com www.carterwatkins.com



DOUGLAS COUNTY BOUNDARY WATERS PARK CONCESSION STAND  
DOUGLASVILLE, GEORGIA

SHEET TITLE:  
FIRST FLOOR PLAN -SANITARY  
LEGEND  
PRINTED: 04/19/18

NUMBER:  
P-1

DATE: 04/19/18  
PRINTED