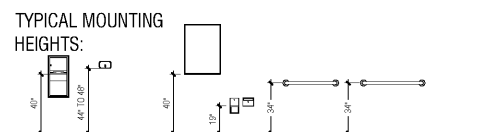


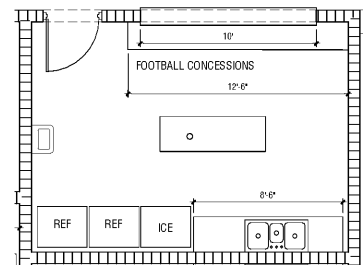
TOILET ACCESSORIES

Item	Description	Model No.	Height
1	Hand Dryer	BOBRICK P-7125 INSTANTARY SURFACE MOUNTED AUTOMATIC HAND DRYER	40" TO BOTTOM
2	Snap Dispenser	BOBRICK P-2112 CLASSIC SERIES	42" TO SPOUT
3	Toilet Tissue Disp.	BOBRICK P-2052 SURFACE MOUNTED TWIN ROLL TOILET TISSUE DISPENSER	15" TO CENTERLINE
4	32" Handicap Grab Bar Non-slip grip	BOBRICK P-5008 X36	34" A.F.F.
5	42" Handicap Grab Bar Non-slip grip	BOBRICK P-5008 X 42"	34" A.F.F.
6	Mirror With Chained Frame	BOBRICK P-165 24X24 X 30	40" MAX TO BOTTOM
7	Toilet Partition	BOBRICK ACCENT SERIES 1530 STAINLESS STEEL 4030K-10	6" TO BOTTOM

NOTE: ALL ACCESSORIES TO HAVE STAINLESS STEEL FINISHES.

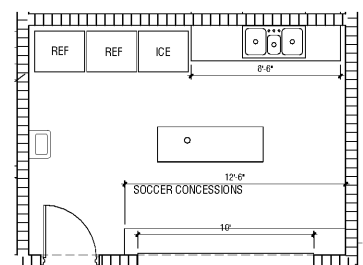
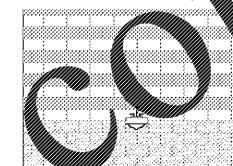
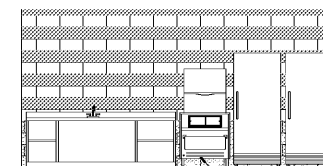
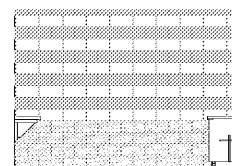
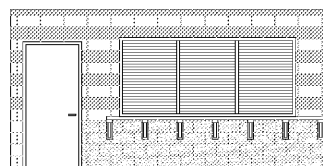


- TOILET ACCESSORY NOTES:
- ALL ACCESSORIES SHALL BE STAINLESS STEEL FINISH.
 - COORDINATE LOCATION OF ACCESSORIES WITH NECESSARY BLOCKING, ELECTRICAL SWITCH AND WIRING LOCATIONS, ETC. TO ENSURE PROPER CLEARANCES AND MOUNTING HEIGHTS. NOTIFY ARCHITECT OF ANY DISCREPANCIES BEFORE PROCEEDING.



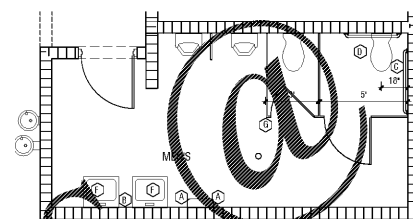
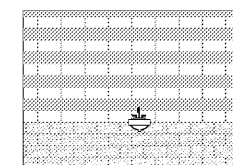
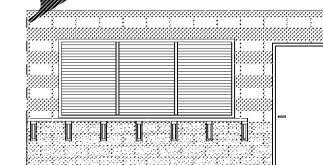
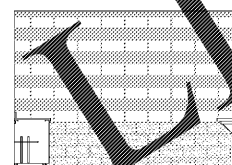
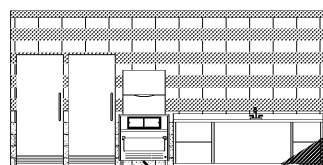
1 FOOTBALL CONCESSIONS

1/4" = 1'-0"



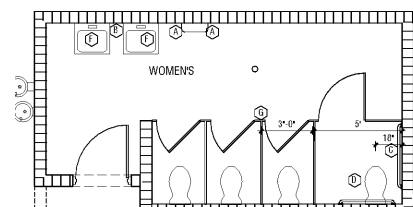
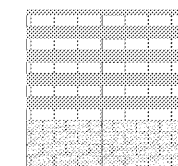
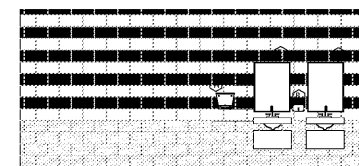
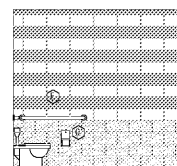
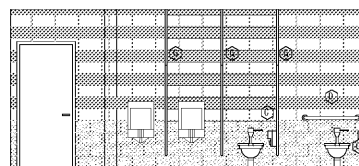
2 SOCCER CONCESSIONS

1/4" = 1'-0"



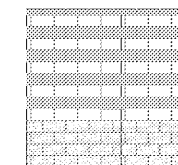
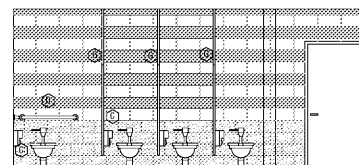
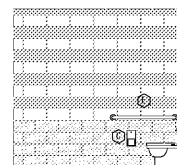
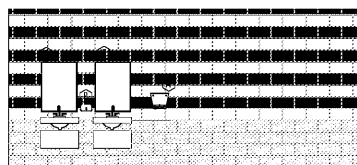
3 MEN'S RESTROOM

1/4" = 1'-0"



4 WOMEN'S RESTROOM

1/4" = 1'-0"



JUN 19 2018 1:25:58 PM C:\Users\jwatts\Documents\DWG\Drawings\A4.0 INTERIOR ELEVATIONS.dwg
 Z:\SHARED\DWG\Drawings\A4.0 INTERIOR ELEVATIONS.dwg


Order Plans @ WWW.IDILine.com

Number	Date	Remarks	Number	Date	Remarks
X	00-00-00	N/A			

CONSULTANTS


CARTER WATKINS ASSOCIATES
 ARCHITECTS, INC.
 POST OFFICE BOX 1064
 137 EAST WASHINGTON STREET
 MONROE, GEORGIA 30655
 Fax: 770-267-1064
 email@carterwatkins.com www.carterwatkins.com

SEAL



DOUGLAS COUNTY BOUNDARY
WATERS PARK CONCESSION
STAND
 DOUGLASVILLE, GEORGIA

SHEET TITLE:
 INTERIOR ELEVATIONS
 PRINTED:

NUMBER:
A 4.0

DATE: 06/19/18

PRINTED

This Document is the property of Carter Watkins Associates.
 Reproduction of any part is prohibited under Federal Copyright Laws.