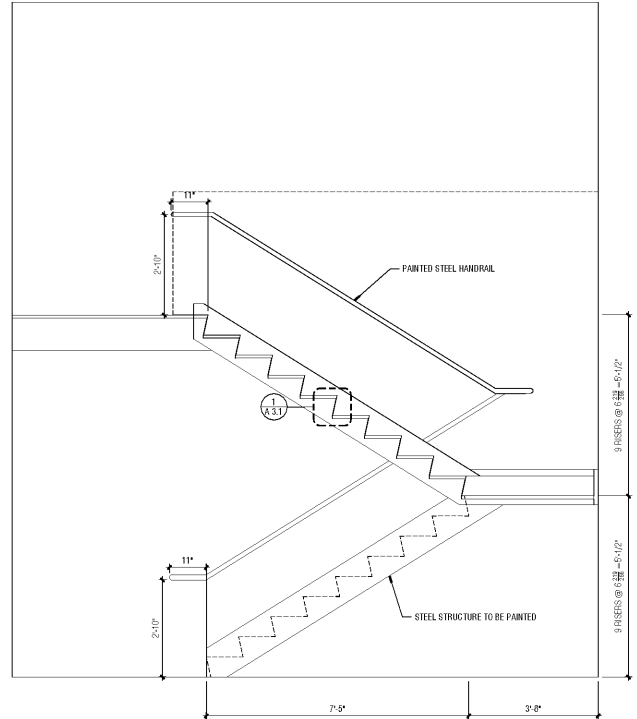
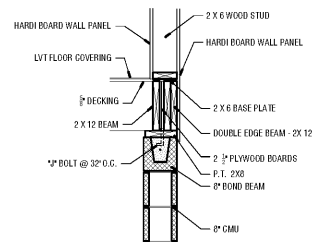
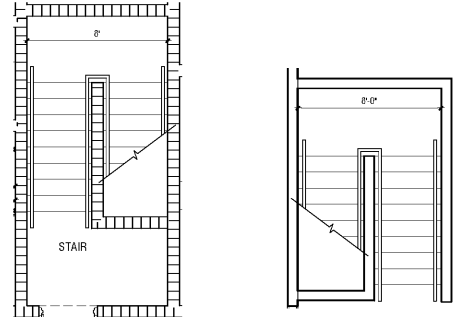


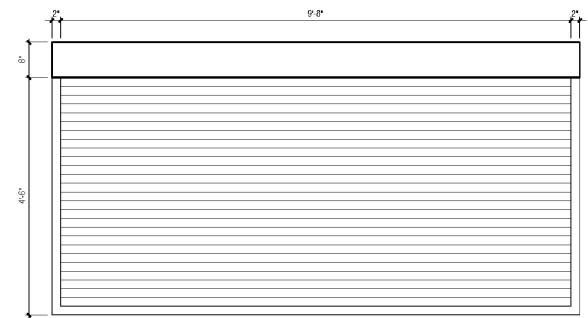
1 ENLARGED SECTION AT STAIR
 1" = 1/2"



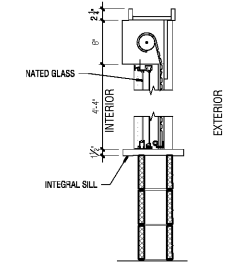
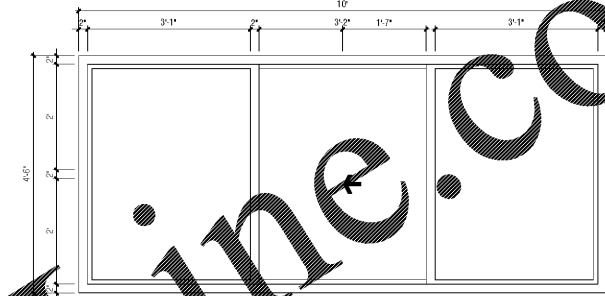
2 SECTION AT STAIRS
 1/2" = 1'-0"



7 WALL SECTION AT STAIR SHAFT
 3/4" = 1'-0"



3 CONCESSION SERVICE WINDOW ELEVATION
 3/4" = 1'-0"



4 CONCESSION WINDOW SECTION
 3/4" = 1'-0"

Jun 19 2018 1:25:48 PM Z:\SHARED\DWG\2018\20180619\ADBC\20180619\ADBC.dwg

Order Plans @ www.LDILine.com

This Document is the property of Carter Watkins Associates. Reproduction of any kind is prohibited under Federal Copyright Laws.

Number	Date	Remarks	Number	Date	Remarks
X	00-00-00	N/A			

CONSULTANTS

CARTER WATKINS ASSOCIATES ARCHITECTS, INC.
 POST OFFICE BOX 1064
 137 EAST WASHINGTON STREET
 MONROE, GEORGIA 30655
 FAX: 770-267-1064
 email@carterwatkins.com www.carterwatkins.com



ADAIRSVILLE BOYS & GIRLS CLUB
 ADAIRSVILLE, GEORGIA

SHEET TITLE: DETAILS
 PRINTED:

NUMBER: **A 3.1**

DATE: 06/19/18

PRINTED